

# JONG STIT Co.,Ltd.

Leader of polyester textile  
manufacturer in Thailand.  
Since 1940



JONG STIT



ST

E-catalog

# Jong Stit Co, Ltd. is the knitted polyester fabric company



We are under the umbrella of Jong Stit Group, the company group which has operated in vertical integration, proficiently provided polyester products and service through research and development. We provided various types of knitted polyester such as French Terry, Jersey, Tricot, and Fleece.

Jong Stit Group is one of the biggest textiles and fabrics manufacturers in Thailand.

With our capacity of 72,000 tons per year supplying high demand various industries, such as garment, furniture, automotive, home textile, toy and sport equipment. We have serviced customers all around the world

# Welcome to our product catalog

Jong Stit Co.,Ltd. is one stop service polyester fabric destination.

## Higt Quality

We are professional in textile manufacturer, with unique design, fine material and innovated creation. Our passion is to producing high-quality product while promising long-term sustainable commitment.

## Our Certification





# Terry



*TLG-CD9268Z*



*SY-20-AV8003Z*



*FT032x*

## Terry Cloth

This terry cloth or towel terry has long loops on both sides. It can have equally length and amount or only one side can have longer loops. The prolonged side will be softer and it serves as absorbent area, helps you dry water from skin quickly. This type of fabric is ideal for producing towels, bathrobes and bath mat.

## Terry Velour

Terry velour texture is quite opposite to the traditional one. The loops present only on one side while another has short piles which give a feeling of soft and smooth like velvet. It almost has the same feature as french terry but this distinctive velvety makes it stand out from the others.

## French Terry

French terry has 2 different textures. One side is soft and even while the opposite side has loops just like the terry cloth. Most people are familiar French terry in form of sweatshirts and sportswear where the outside clothes are softer and smoother. Moreover, this fabric is popular for pajama and loungewear such as sweatpants can be worn chilling in the house and outgoing.

## Terry Cloth



TLG-CD9268Z



TL2G-CXX5104ZM



TLG-BM0016Z



TL2G-Caa5086Z

## Terry Velour



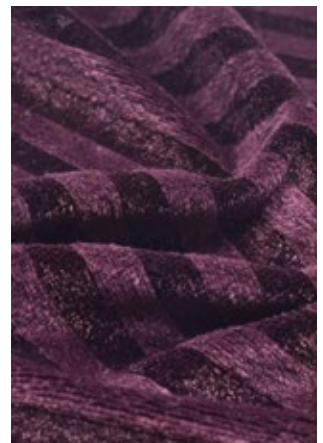
SY-20-B29#2308Z



SZGP-25-B-V-83241ZQ



SY-20-A29#8010Z

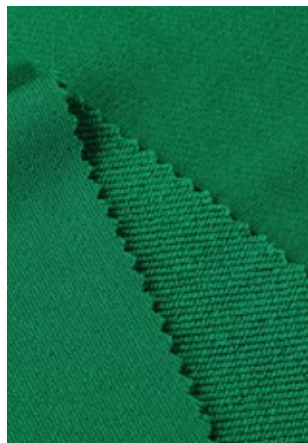


SZGP-25A29V#8006Z

## French Terry



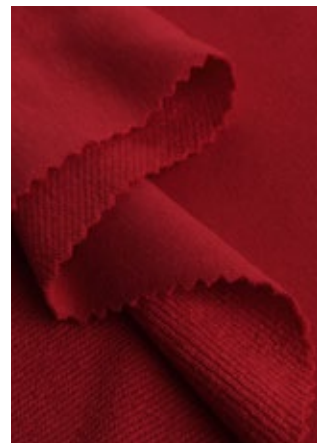
FS005



FT135Gx



FT147



FT164

# Jersey

2



## Single Jersey

*S677*

The face side is softer while the back side is smoother. This fabric stands out for breathability, flexibility and lightness. Therefore, it is perfect for summer clothing and is often used for sport and fashion.

# Jersey



*S586*



*S597-O93*

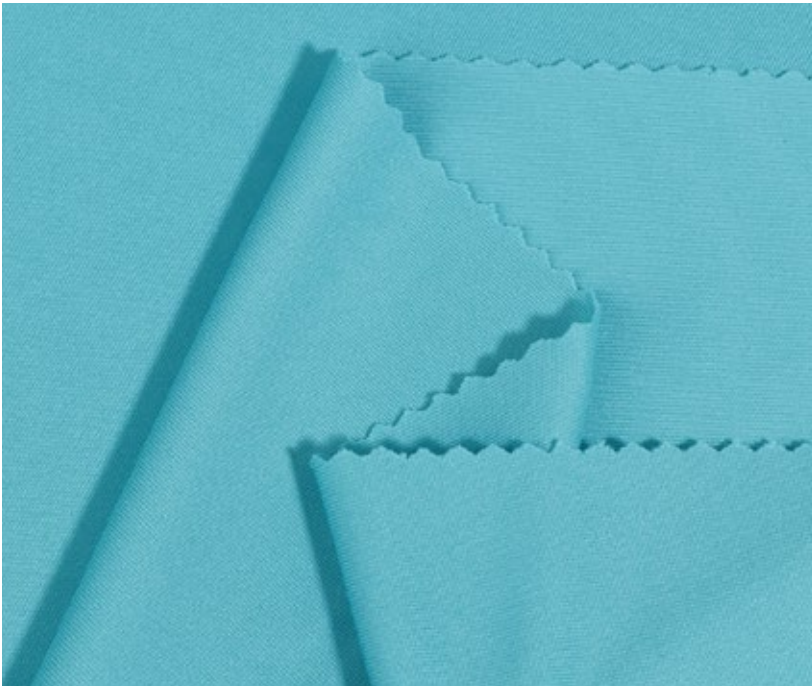


*S730*



*KS626*

# Interlock / Pique



*I336*



*QDL050-1C74*

3

## Interlock

This textile is pretty similar to a single jersey but it is thicker and heavier because it is created by two sets of needles. It is widely used for making sportswear, polo shirts and dresses.

## Pique

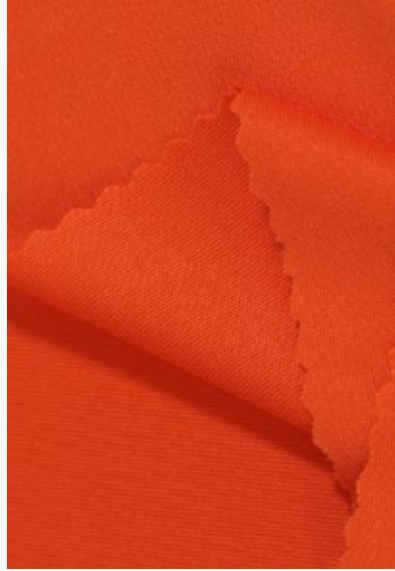
This textile has a waffle or honeycomb structure.

The specifications of this fabric are soft, lightweight, and wrinkle resistance. It is a popular fabric for making sport shirts, especially a polo shirt.

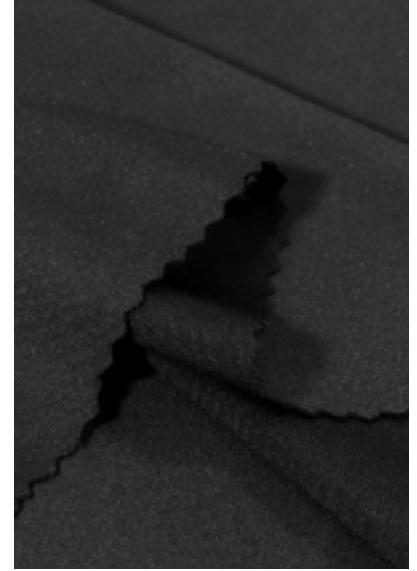
## *Interlock*



*QI396*



*I380*



*QI-9B8240*

## *Pique*



*QDL56*



*P293*



*QP368*

## Rib

4



### Rib

It has more durability and flexibility than plain knit. This is why it is favored for making necklines, cuffs, and bottom edges of clothing. It is also used in making fashion wear such as vests, t-shirts, and dresses.

TRVF105-072



DV252-CB7426



RV88



RV100



RV99

# Spandex

5

## Spandex

Spandex is a smooth fabric which has a unique flexibility. It can stretch to 5-7 times from its normal size. It is moisture wicking and commonly used in workout clothing.

*GS737*



GS701



GS702



GS777



GS703



QGS493



GS851

# Scuba (Double Knit)

5



## Scuba

Scuba is extremely smooth, wrinkle-resistant and stretchy. It is also light weight and comfortable to wear. This is the main reason why scuba is popular for making garments. It commonly used in fashion items like matching sets and pants.

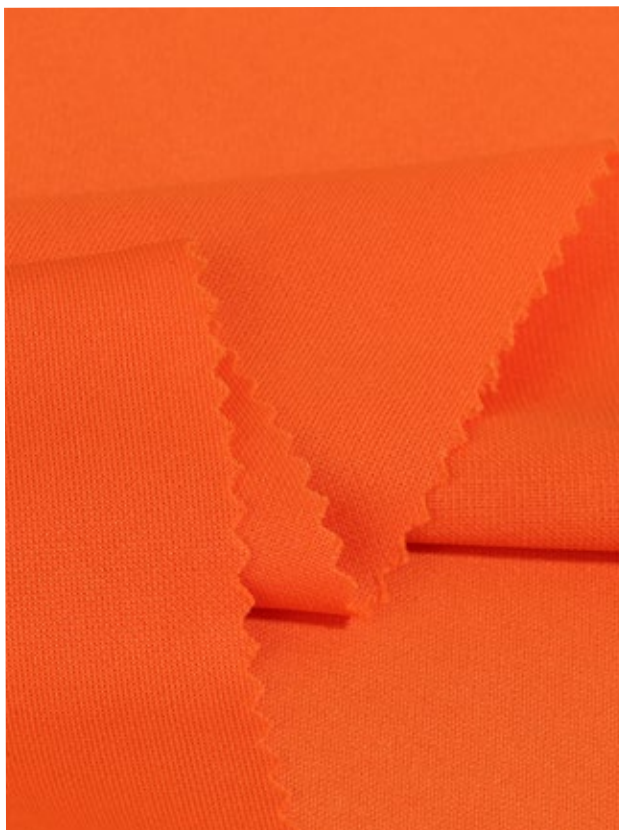
*GDD453*



*GDD370*



*ID-C7226*



*DD538*

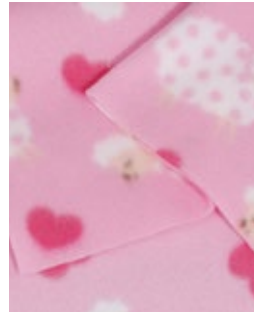


*RV99*

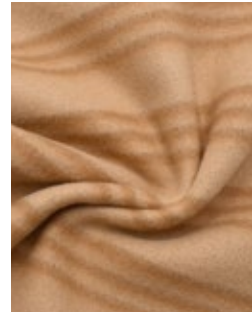
# Fleece & Pile

## Fleece

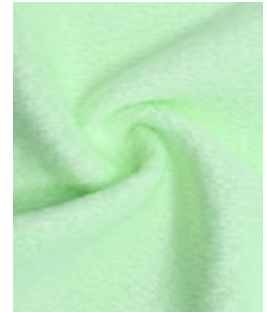
fabric was made to mimic wool, so it is an alternative of real fur products. Fleece fabric is super soft, warm, durable, and breathable. It is perfect for making blankets, throws, gloves, scarves, jackets, and all things cozy.



TR2-CK1264ZP



GTR2-CaK1763Z



BSA1-22-Ba2163Z



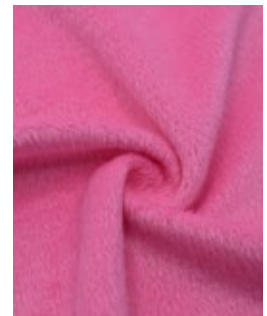
TR1-F59#0008Z



TR1-CK1215Z



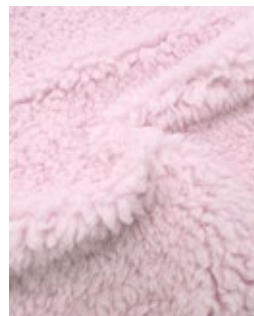
TR3-CF2630#9264Z



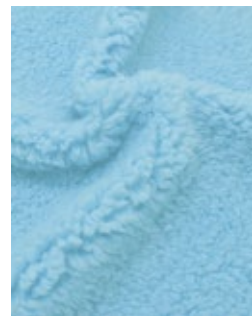
BSA0-30-BA1299Z

## Sherpa

Fabric is a synthetic pile fabric that resembles sheepskin. Features a fluffy knit structure with curl pile. This fabric provides incredible warmth while remaining lightweight, soft, easy to maintain, and quick drying.



T399H1039N75



T399H1039N75



T399A1234D62



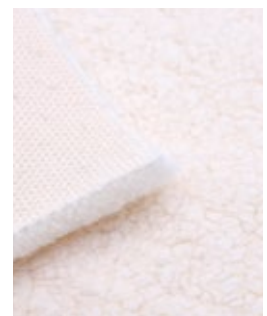
T515J1244N62



T381J1540E60-04



T399J1536E60



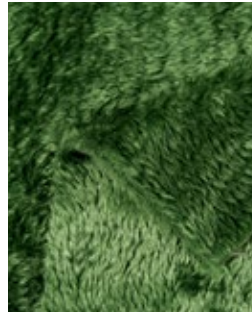
T399G1037N60

# Fleece & Pile

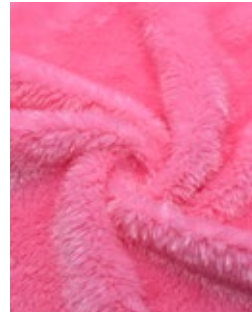
# 6

## *Poly Boa*

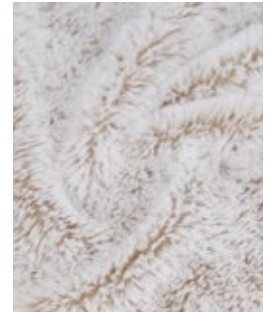
Fabric is a pile polyester fabric. The length of pile is various. It can be very short from 3 mm. to extremely long at around 20 mm. The longer of the pile, the warmer you will receive.



T657RS0438N61



GT537F0640P62



GV229DJ1559N60



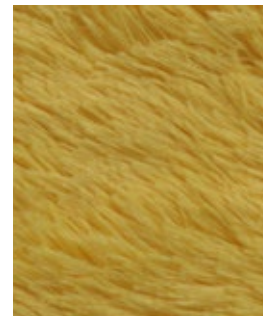
T532M0439N60



T368M0530N60



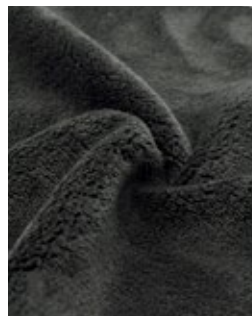
T537RG0435N60



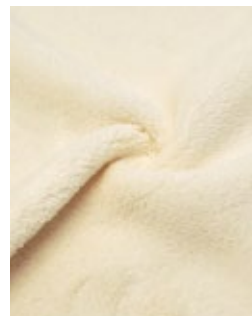
GV446DA3057G60

## *Flannel*

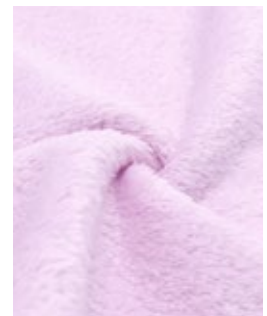
Fabric is a soft, medium-weight. Flannel fabric are home textiles like fluffy blankets, apparels, toys including some types of furniture which requested for the reasonable price with soft, lush and warm fabric.



GT7002



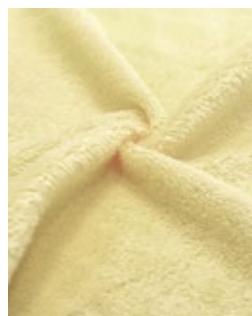
FT7018



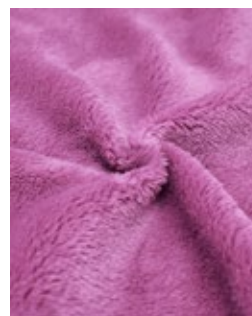
FT7009



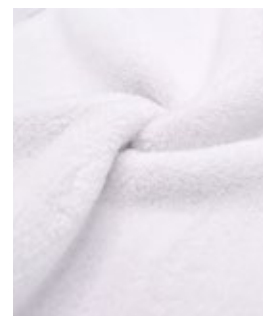
GT7001



FO7003



FO7006

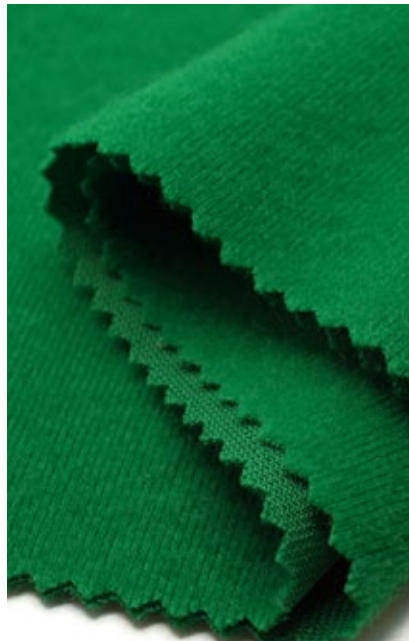


FT7006

# Tricot



TH2002



TB4148



TM4101

## Tricot

This fabric is a warp knitting fabric's structure, characteristically giving the textile an excellent anti-wrinkle and good drape. It is commonly used in the apparel and furniture industries, including various sportswear and sports equipment.

## Tricot Brush

In finishing process, the brushes or other abrading devices is utilized to raise the fibers to fabrics. Raising a nap produces a fuzzy or downy surface, which is why tricot brush has a softer feel.

## Tricot Mesh

Having small porous all over. The outstanding of tricot mesh are strength-to-weight ratio. Tricot mesh can be very lightweight yet remarkably soft touch, tear resistant and breathable.

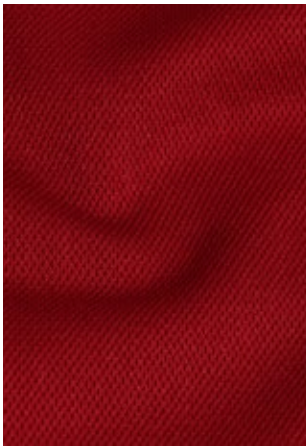
**Tricot**



TS2020



TS4030

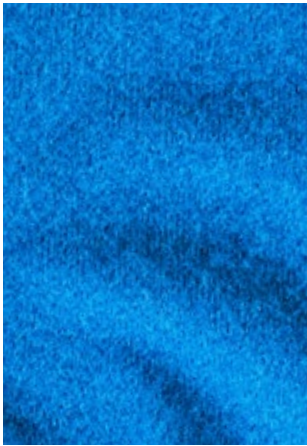


TF5198



TF5117

**Tricot Brush**



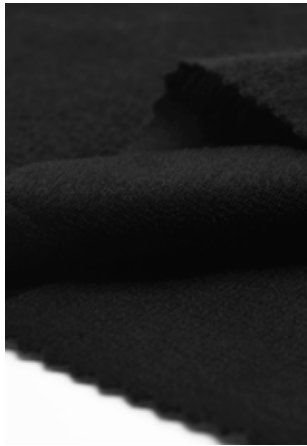
TB2043



TB2030



TB4064



TB2116

**Tricot Mesh**



TM4084



TM4168



TM4136OR



TM2152

# Special fabric & functional treatment



Cool Quik



Anti-UV



Anti-Bacterial



Stain Release



Water Repellency



Anti-Static

# Fabrics applications

We offer various fabrics from virgin and recycled polyester. Our textiles are versatile from everyday use to professional practice.



Sportswear



Blanket



Chiffon Fabric



Uniform



Dress



Polo Shirt



Lace



T-Shirt



Underwear



Sport Mesh



Towel



High Visibility



Jeans



Jacquard



Bedding



Accessories



Coat



Activewear



Home Décor



Formal Clothes



Sweater



Toys



Special Event



Mesh Fabric



For Baby



**JONG STIT**

## Follow us on



@jongstit



jongstit



[www.jongstit.com](http://www.jongstit.com)



JONG STIT CO, LTD



## Contact Us



Jong Stit Co.,Ltd.  
99 M 1 Soi Phojae,  
Ekkachai Rd.,Khae Rai,  
Krathum Baen,  
Samut Sakhon  
74110 Thailand



(+66) 62-718-2228



[support@jongstit.com](mailto:support@jongstit.com)