



aluminum alloy doors & windows systems

INTEGRITY Catalog

Door & Window Products



INTEGRITY CATALOG

Door& Window Products Introduction



BRAND RESUME



Zhejiang Integrity Technology Co., Ltd. was founded in 1999 and is located in Yongkang, Zhejiang, the world's hardware capital. It is a modern door and window enterprise integrating the research and development, manufacturing and customization of high-end system doors and windows, aluminum-wood doors and windows, and Chinese-style windows.

The company has obtained national high-tech enterprise certification, German Passive House Institute (PHI) certification, and North American Energy Star certification. Products are exported to overseas, the United States, Canada, Australia and many other countries.

After 22 years of industry accumulation, Xinou now has a self-built large-scale modern factory, a senior R&D and design team, professional production technical talents and the most advanced European production technology in the industry. It adopts a full set of Germany's most advanced CNC production tools to achieve production. Intelligence ensures first-class product quality.

Since its inception, INTEGRITY has been adhering to the principle of "excellence, pragmatism and innovation", adhering to the customer-centered business service concept, concentrating on research and development, continuous innovation, and constantly strengthening its own construction. Promote the development trend of ultra-low energy consumption building exterior windows in China, allowing more families to experience a healthy, comfortable, green and low-carbon living environment.

A stylized number '22' logo where the first '2' is red and the second '2' is blue, both with a white outline.

Years of persistence in
the door and window industry





HISTORY

2010

After more than 10 years of experience accumulation and technology accumulation, the company began to take the branding route, successfully registered the INTEGRITY brand, and determined the brand strategy of high-end home decoration doors and windows customization! At the same time, it has built many influential brand stores in China.



2012

Introducing top door and window processing equipment such as the German Weing Door and Window Processing Center, Yale Cutting Saw, and Italian Flying Screen Fully Automatic Double-Headed Saw; absorbing industry professionals, creating three major centers of R&D and design, production management, and marketing promotion, and passing the three system certifications at one time, laying a solid foundation for providing customers with high-quality products and services.



2015

We made our first appearance at the Guangzhou Building Materials Expo and won unanimous praise from the industry with our high-quality products, novel designs, and advanced concepts.



2017

We strongly attended the Guangzhou Construction Expo, with an exhibition area of more than 300 square meters, and attracted investment from all over the country. We were highly recognized by customers, achieved gratifying results, and established the INTEGRITY brand status.



2019

The company held the 5.12 event---INTEGRITY brand promotion conference and industry strategy seminar, launched a comprehensive upgrade of V and SI, repositioned the status of high-end wooden windows, launched the brand concept of "Good windows, passed down for centuries", and truly achieved one window, one customization, both emotions, scenery and life.



2021

The INTEGRITY brand has reached the leading level in the industry. With the continuous expansion of brand influence, the company has begun to carry out global trade, selling doors and windows overseas, and entering the European and American markets...



1999

A team of 6 people was formed to start the production and processing of a series of products such as stainless steel fences, non-bridge aluminum alloy doors and windows, and balcony glass railings, becoming one of the earliest local manufacturers engaged in the production of doors and windows.



2011

Our company invested another 30 million yuan in the expansion of the new factory and it was officially put into use. The factory area reached 25,000 square meters, becoming a high-end door and window manufacturer with brand, quality and scale in the surrounding area.



2013

We once again introduced professional management talents, comprehensively improved product process standards, implemented a process standard training system, and paid close attention to product details. In order to keep up with Europe's advanced door and window design concepts and process standards, the general manager and his team introduced the strict management system and exquisite craftsmanship of European door and window factories from Germany, Italy and then Belgium.



2016

We have established cooperative relationships with domestic high-quality real estate developers such as Overseas Chinese Town, Greenland, and Sunshine City. We have an annual output of 200,000 square meters of engineering doors and windows, and have established a professional installation team to lay a solid foundation for the company's long-term and stable development.



2018

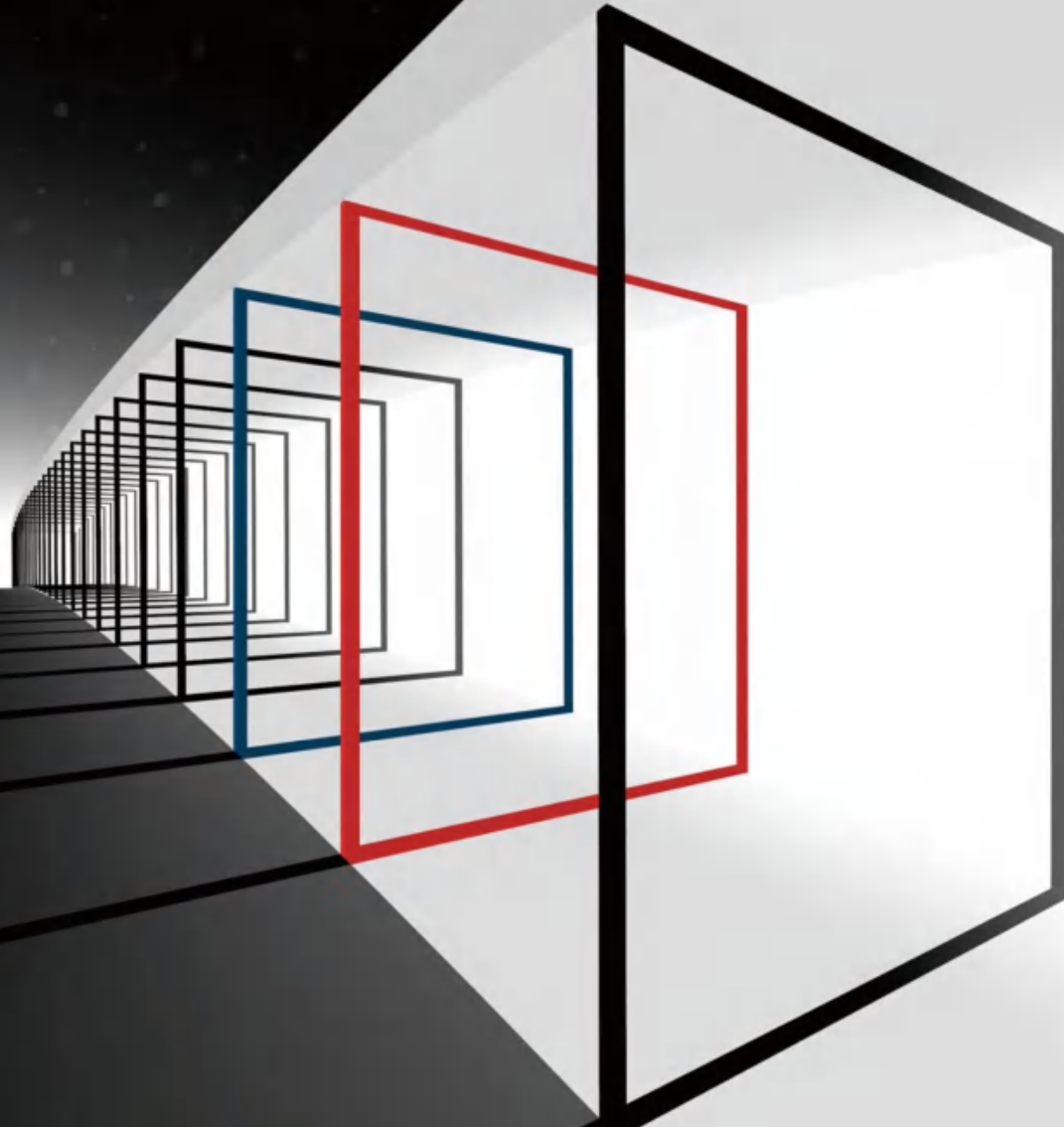
Invited to attend the Guangzhou Construction Expo again, it launched new products such as XO86P aluminum-clad wood windows, XO98 aluminum-clad wood passive windows, and XO108 narrow-edge aluminum-clad wood windows that shocked the industry, attracting a large number of outstanding dealers in the industry to actively join. More than 20 stores in China have been opened one after another.



2020

Brand redefinition---returning from wooden windows to wooden windows, high-end aesthetic design. Upgrade VI and SI again and reposition the high-performance aluminum alloy system, increase research and development efforts, improve product series, and set an example for the development of the industry.





International forward-looking design vision, interprets the functional aesthetics of doors and windows.

Minimalism is a true design philosophy, and we believe that its core is function; behind every door and window is the refinement of design ingenuity, the ultimate expression of appearance and performance;

Whether it is a window or a door, we can open it wider to bring you a more extreme view; our doors, windows, and sunrooms can all be matched with corresponding intelligent equipment, and each product is designed to meet the needs of more Developed for better thermal insulation performance, more flexible design combinations and more attractive visual effects.

INTERNATIONAL PERSPECTIVE
DOORS & WINDOWS ARTISTIC

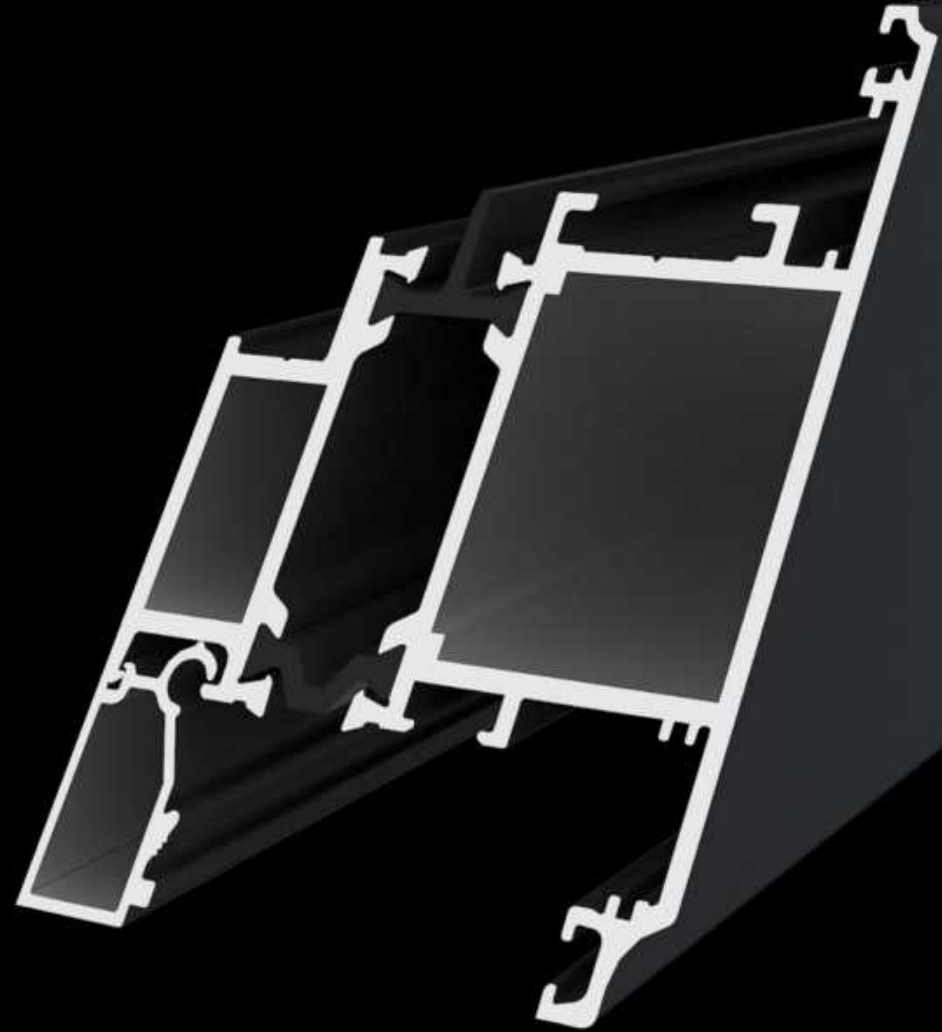






Ultra-high Precision Aluminum

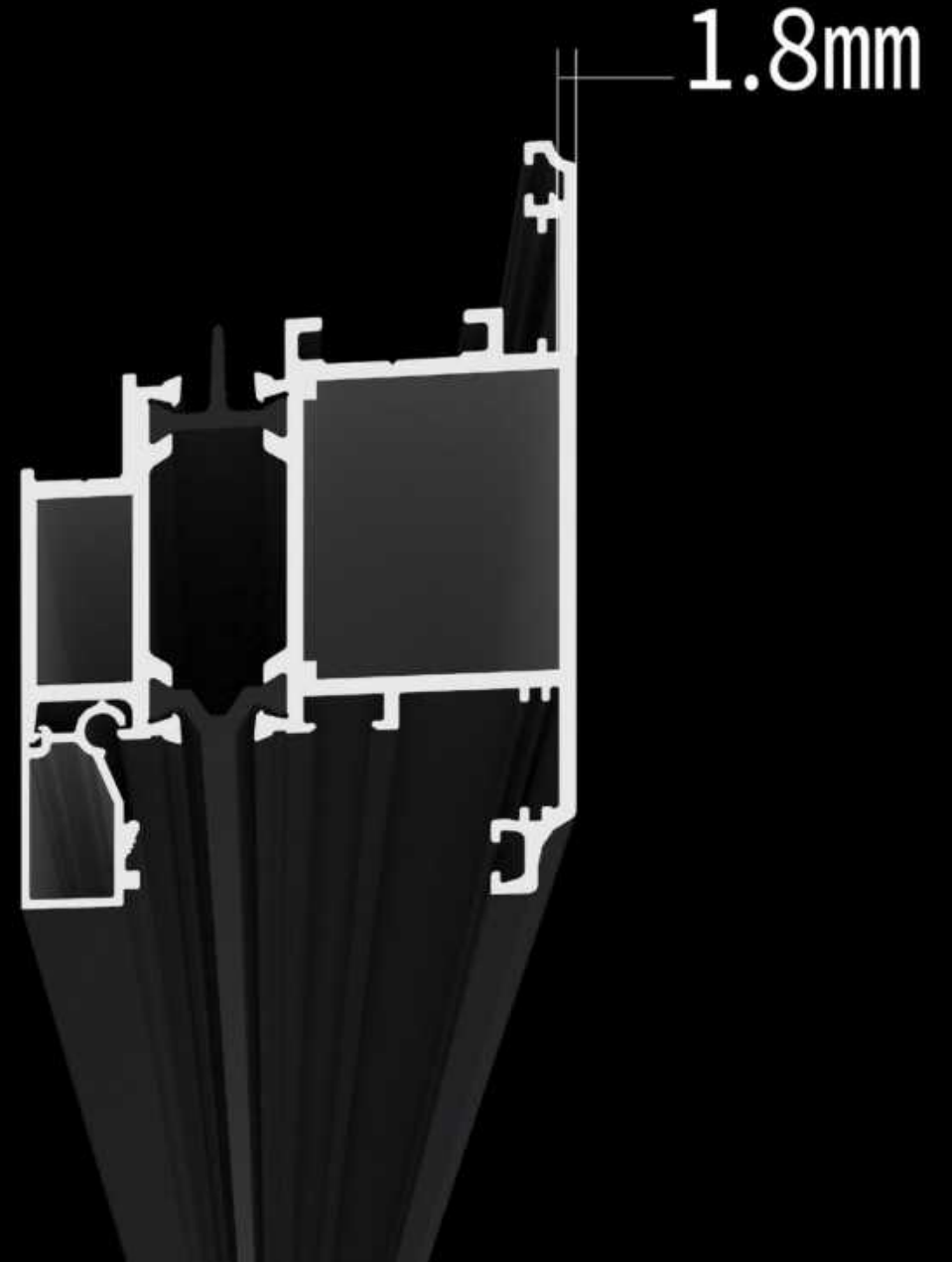
- *Selected primary aluminum ingots
- *6 series high quality aluminum alloy extrusion
- *Air-cooled age hardening process
- *High strength, high toughness, corrosion resistance





1.8mm

Thickness of the main stress-bearing part of the aluminum alloy



High strength profile - 6063-T5 aluminum alloy profile

Profiles are the basic construction of doors and windows, and they mainly play the main role of fixed support, load-bearing, wind pressure resistance and other main stress-bearing functions. The tensile and compressive strength of the profile directly affects the deformation of the overall doors and windows. Except for special modeling requirements (such as curved arcs), 6063-T5 profiles are used. The high strength avoids gaps caused by deformation during use, which affects the sound insulation performance.



Contrast	INTEGRITY	international and other brand
Profile accuracy	German high-precision grinding tools, high profile accuracy	Aluminum manufacturers purchase models directly, but the accuracy is poor
Thickness	≥1.6mm	Far smaller than international standard requirements
Raw material	High quality virgin aluminum	Aluminum recycling and scrap aluminum utilization
Compatibility	System mold opening, exclusive customization, high matching of the entire window	Aluminum manufacturers purchase directly, product matching is poor



HARDCORE TECHNOLOGY

The window sash has no sharp corners, allowing children, the elderly and family members to be in a safe environment at all times.

R Shape

Safety corner protection/seamless welding

Ingenious design with warmth





Three-seal strips and two-cavity composite make it quieter



- ◆ Imported EPDM raw material strips provide excellent and long-lasting sealing performance. Ultra-high elasticity and long-term high elastic recovery, excellent sound and heat insulation performance.
- ◆ The isobaric gun rubber strip is integrally film-welded and has no seams, essentially solving problems such as water seepage.
- ◆ Foaming + dense co-extruded sealing strips minimize the impact of "thermal expansion and contraction" on the sealing performance of the strips, making the noise reduction and thermal insulation performance outstanding.
- ◆ Improve thermal insulation performance:
Standard value Hard EPDM: $\text{Input}=0.25\text{W/mk}$
Standard value Cellular EPDM: $\text{input}=0.05\text{W/mk}$.
- ◆ The permanently precise lip position of the strip ensures long-lasting optimal sealing performance. The highly insulating microporous structure combines with excellent aging resistance.
- ◆ *Easy installation *High error tolerance *Unparalleled appearance quality



European imported hidden hinges

- ◆ Good noise reduction performance: compared with exposed hinges, it can reduce 3-4DB noise.
- ◆ High load-bearing performance: 90kg, 130kg, 170kg
- ◆ High corrosion resistance: Neutral salt spray test can reach 240 hours to 480 hours.
- ◆ High security: The chain design adopts the most advanced anti-theft design.
- ◆ High airtight and watertight performance
- ◆ Easy to adjust: 3-dimensional adjustable, convenient for maintenance during use





GROUP ANGLE INJECTION PROCESS

±0.05 Assembly corner glue injection process





Multi color customization

Using Austrian TIGER metal powder;

Solvent-free, pollution-free, strong weather resistance, good adhesion

Rich colors and high consistency

Spraying - a must for finished doors and windows

TIGER Powder Coatings is a leading company in the surface treatment industry, founded in 1930 in Austria and dedicated to innovative coating solutions for over 80 years. There are over 10 standardized chemical plants and more than 50 branch structures worldwide, with three top research and development centers in Europe, Asia, and North America.



Austria TIGER (Powder)



Accessories

- ◆ Cast aluminum corner code
- ◆ Two-component glue imported from Germany
- ◆ horny tablets
- ◆ PE insulation cotton
- ◆ glass spacer





Top Quality in the World

Precision profile system

Stable insulation system

Reliable hardware system

Stable sealing system

Transparent glass system

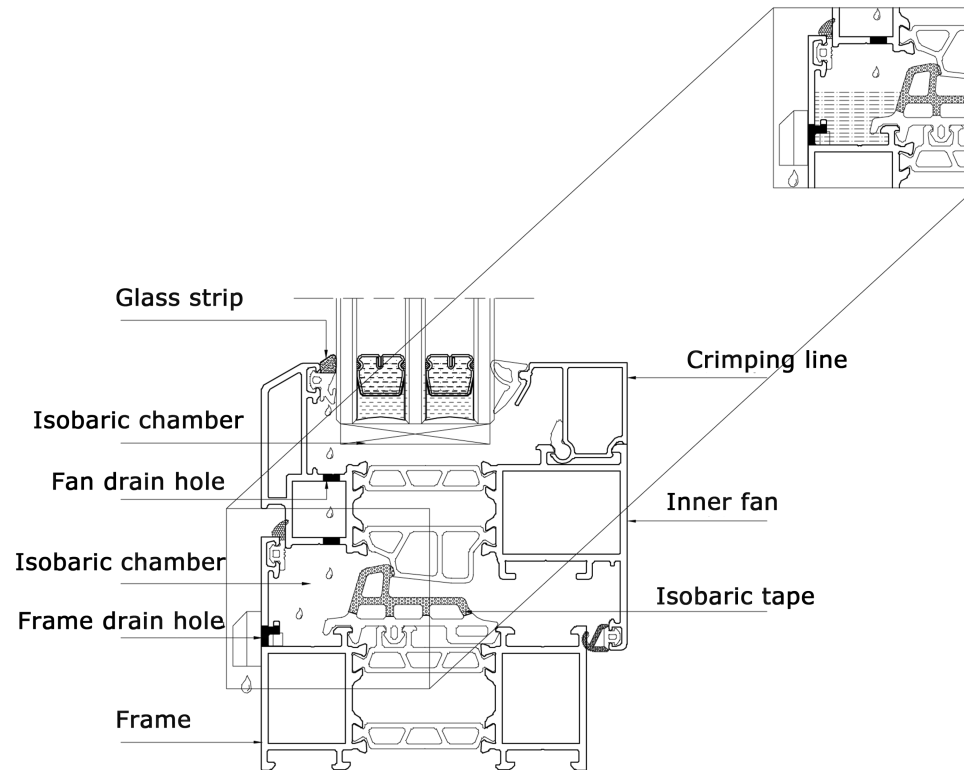
Colorful surface treatment

Mechanical group angle

Cast aluminum corner code

Two-component glue injection

Isobaric balancing technology



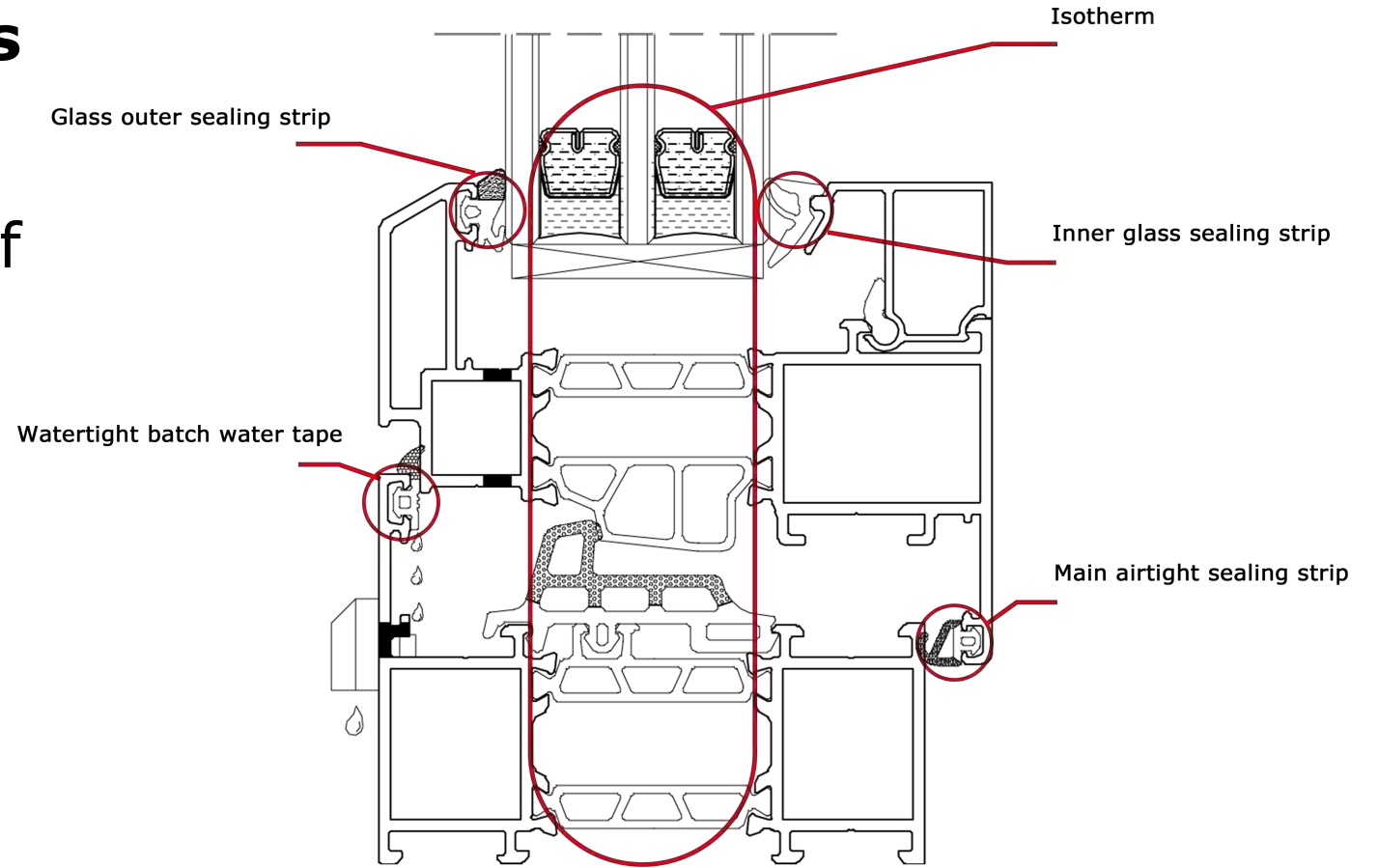
- Use the principle of isobaric balance to solve the separation of water and gas
- An isobaric cavity is formed in the cavity to allow rainwater to drain quickly



Sectional design of profiles

- "Three dense lines"

Determine the performance of doors and windows

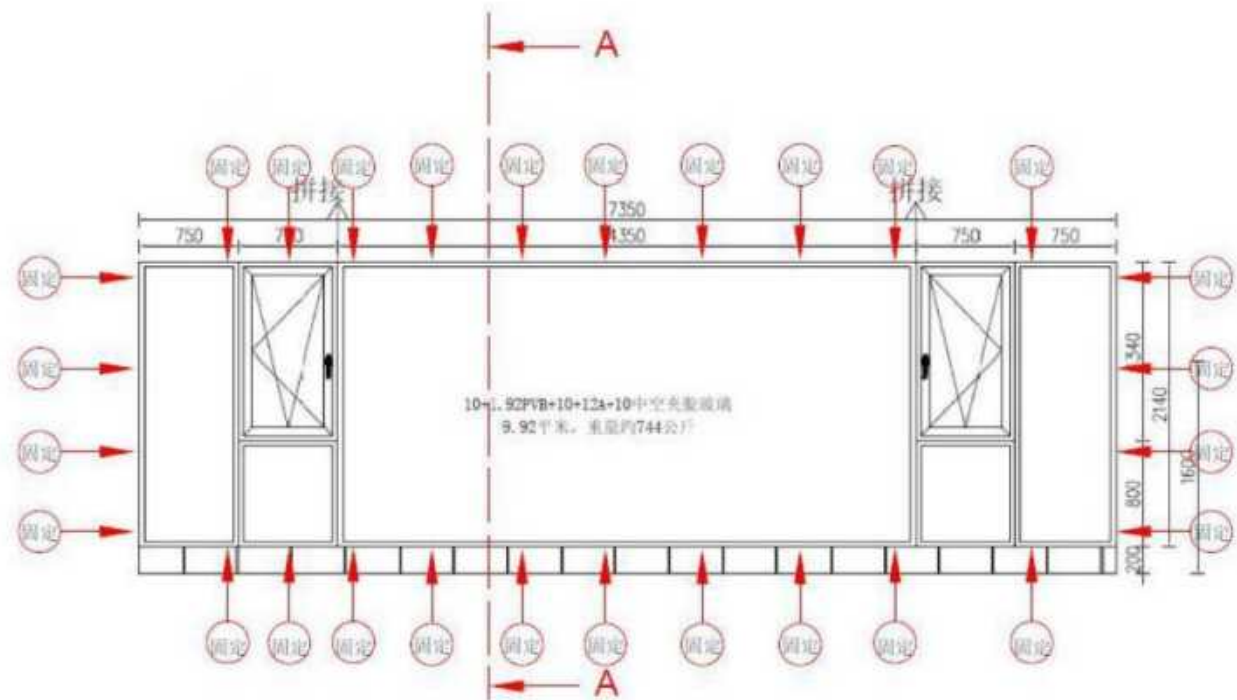




Installation accessories



Introduction to auxiliary materials



German Würth frame fasteners

Introduction to auxiliary materials



SOUDAL

Structural adhesives and foaming agents are from internationally brands



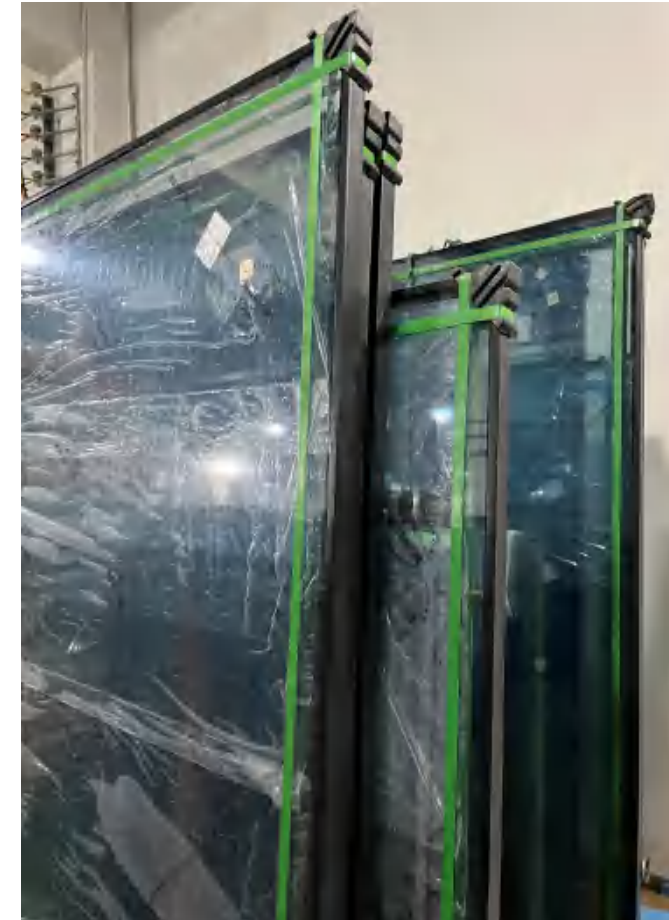
ANTHEMYZE IS THE MOST DURABLE WEATHER RESISTANT STRUCTURAL ADHESIVE WE OFFER!
INTERNATIONAL STRUCTURAL GLUE, QUALITY ASSURANCE, TRUSTWORTHY





Installation accessories

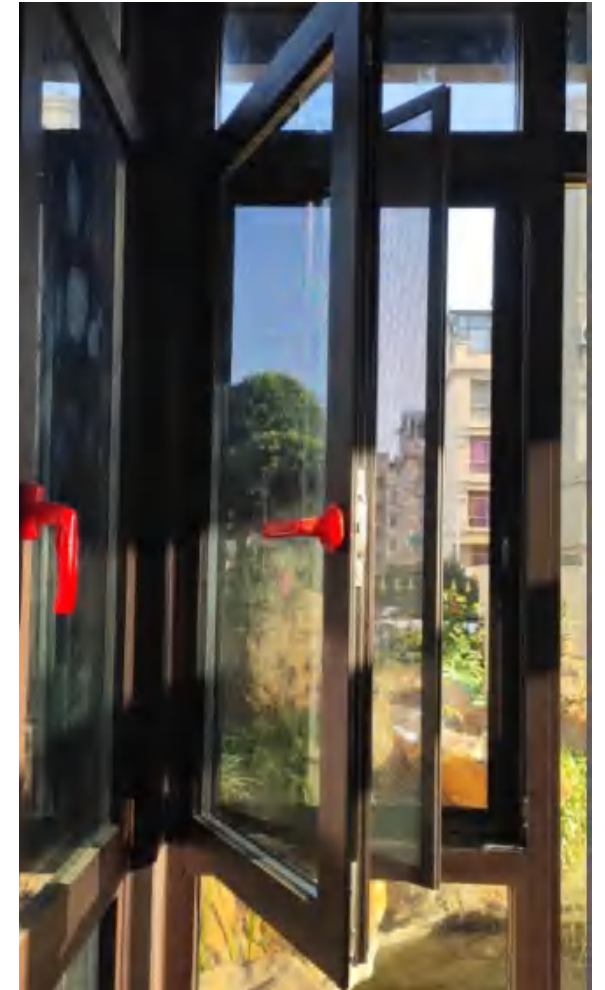
Glass corner protectors

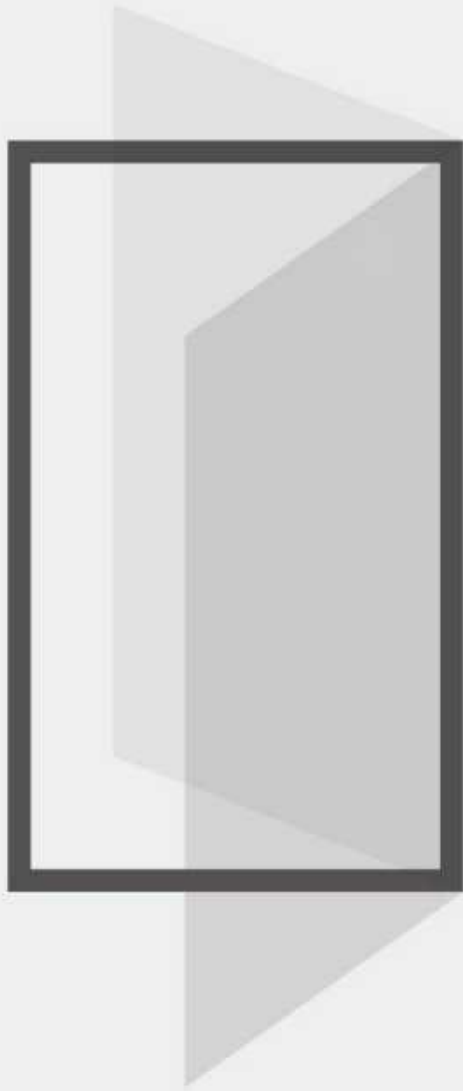


Finished product protective film



Handle protective cover





WINDOWS SYSTEMS



XW108 Tilt&Turn windows

- High-strength 6063-T5 high-core gold aluminum, super-strong composite insulation strips (Tylenol PA66GF25), wall thickness 1.8mm.
- Multi-channel sealing structure design, perfect water-tight and air-tight performance.
- Unique hidden drainage structure design, hard-core seamless welding, a fusion of technology and aesthetics
- The whole window has flush narrow frames inside and outside, seamless love C corner protectors, free matching of two colors inside and outside, the window screen is integrated to prevent falling and theft, hidden pressure lines, hidden middle mullions, hidden hinges, and hidden drainage.
- Multi-channel sealing, all-round mosquito protection, and insect-proof screens on drainage holes.

Product parameters

Thickness	Frame width	Fan width	Hardware / Handle	Standard glass	Thermal	Soundproof	Airtight	Watertight	Wind pressure
1.8mm	22mm	60mm	AGB/HOPPE	5G+20A+5	7 Level	4 Level	8 Level	6 Level	>8 Level



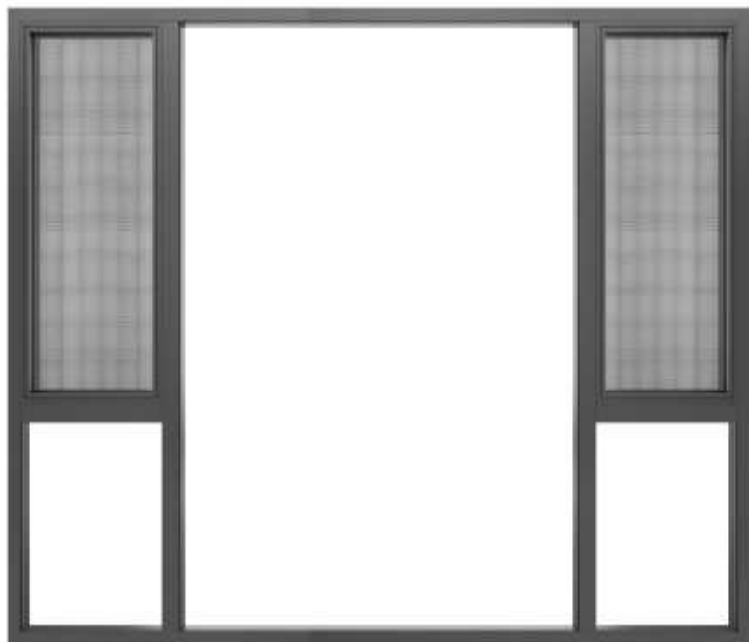
XW80 Tilt&Turn windows



- High-strength 6063-T5 aluminum alloy, new standard 1.8mm wall thickness, multi-cavity profile structure system to improve overall performance
- Wide, multi-cavity insulation strips provide better thermal insulation performance
- Super sound insulation performance, "quiet" in SINOE
- Multi-cavity soft and hard co-extruded foam isobaric strips improve the thermal insulation, water-tightness and air-tightness properties of the product
- Hidden hinge design, safe to use, beautiful in appearance, safer and more reliable

Product parameters

Thickness	Frame width	Fan width	Hardware / Handle	Standard glass	Thermal	Soundproof	Airtight	Watertight	Wind pressure
1.8mm	35.6mm	51mm	GIESSE/XOcusto m	5G+20A+5 G	8 Level	4 Level	8 Level	6 Level	>8 Level



XW85 Tilt&Turn windows

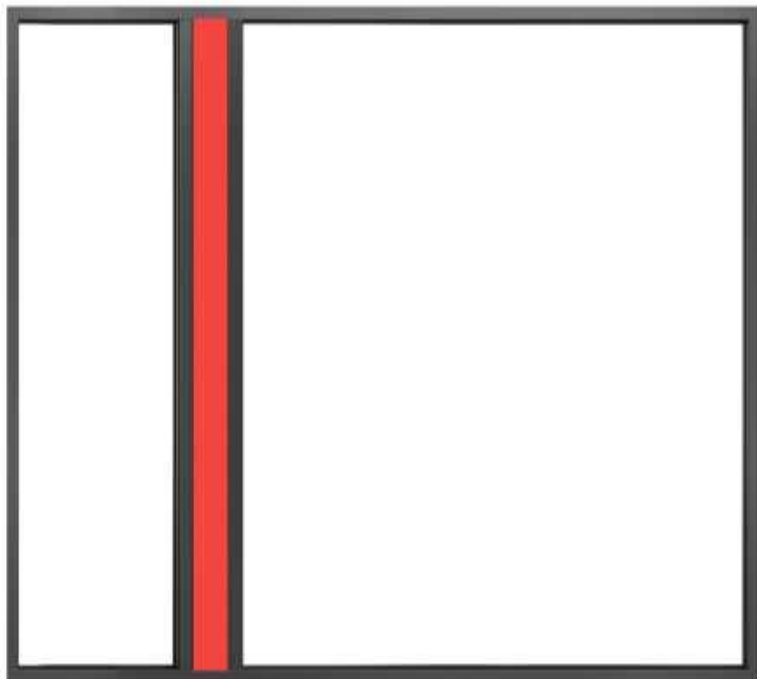
- High-strength 6063-T5 aluminum alloy, new standard 1.8mm wall thickness, screen window integrated design, the overall structure is flush with the outdoors
- Multi-cavity soft and hard co-extruded foam isobaric strips improve the thermal insulation, water-tightness and air-tightness properties of the product
- Magnetic window screen structure design, the window screen can be opened and closed easily, detachable and easy to clean
- A dual-inward opening window system that meets standard performance configurations and is more cost-effective

Product parameters

Thickness	Frame width	Fan width	Hardware / Handle	Standard glass	Thermal	Soundproof	Airtight	Watertight	Wind pressure
1.8mm	35.6mm	51mm	GIESSE/XOcusto m	5G+20A+5 G	6 Level	4 Level	8 Level	6 Level	>8 Level



XW65IN Micro ventilation



- High-strength 6063-T5 aluminum alloy, super-strong composite insulation strip (PA66GF25), wall thickness 1.6mm, multi-cavity profile structure system to improve overall performance
- Large fixed and small opening design, the visual effect is super good
- Micro-ventilation allows indoor and outdoor air circulation while providing excellent safety
- Using the hardware system imported from Italy, the entire window is designed to have a service life of more than 30 years

Product parameters

Thickness	Frame width	Fan width	Hardware / Handle	Standard glass	Thermal	Soundproof	Airtight	Watertight	Wind pressure
1.6mm	50mm	200mm	GIESSE	6G+20A+6	6 Level	3 Level	5 Level	3 Level	6 Level



XW96IN Tilt&Turn window



- High-strength 6063-T5 aluminum alloy, super-strong composite insulation strip (PA66GF25), wall thickness 1.8mm, multi-cavity profile structure
- Extremely narrow frame design, flush indoor/outdoor frame sash, three-layer sealing process, perfect water-tight and air-tight performance
- Unique hidden drainage structure design, the integration of technology and aesthetics
- Using the hardware system imported from Italy, high load-bearing hidden hinges, the height of a single fan reaches more than 1800mm, and the imported baseless handle makes the whole system more concise and elegant.

Product parameters

Thickness	Frame width	Fan width	Hardware / Handle	Standard glass	Thermal	Soundproof	Airtight	Watertight	Wind pressure
1.8mm	10mm	62mm	GIESSE/GIESSE	fan 5G+15A+5G fixed 5G+20A+5G	7 Level	4 Level	8 Level	6 Level	>8 Level

XW112 External opening window with integrated screen



- High-strength 6063-T5 aluminum alloy, multi-cavity profile structure, wall thickness 1.6mm, improves overall performance
- The narrow frame and large sloped line design make the visual effect more impactful.
- Vertical isotherm design and three seals provide better heat insulation and sealing effect.
- Using the hardware system imported from the United States, Ximeike high-load-bearing outward-opening hardware.

Product parameters

Thickness	Frame width	Fan width	Hardware / Handle	Standard glass	Thermal	Soundproof	Airtight	Watertight	Wind pressure
1.6mm	32mm	45mm	CMECH	5G+15A+5G	6 Level	3 Level	5 Level	3 Level	6 Level



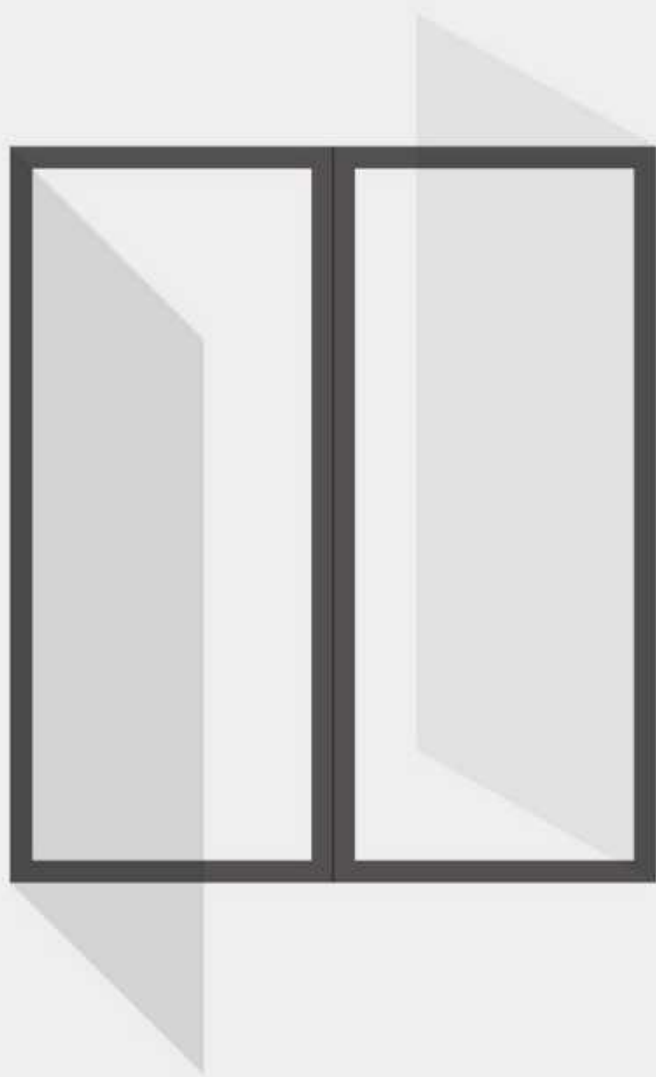
XW70S Outward opening window



- High-strength 6063-T5 aluminum alloy, multi-cavity profile structure, wall thickness 1.6mm, improves overall performance
- Vertical isotherm design and three seals provide better heat insulation and sealing effect.
- Use imported hardware system and high load-bearing outward opening hardware.

Product parameters

Thickness	Frame width	Fan width	Hardware / Handle	Standard glass	Thermal	Soundproof	Airtight	Watertight	Wind pressure
1.6mm	35.6mm	57mm	GIESSE/HOPPE	5G+15A+5G	6 Level	3 Level	5 Level	3 Level	6 Level



DOORS SYSTEMS

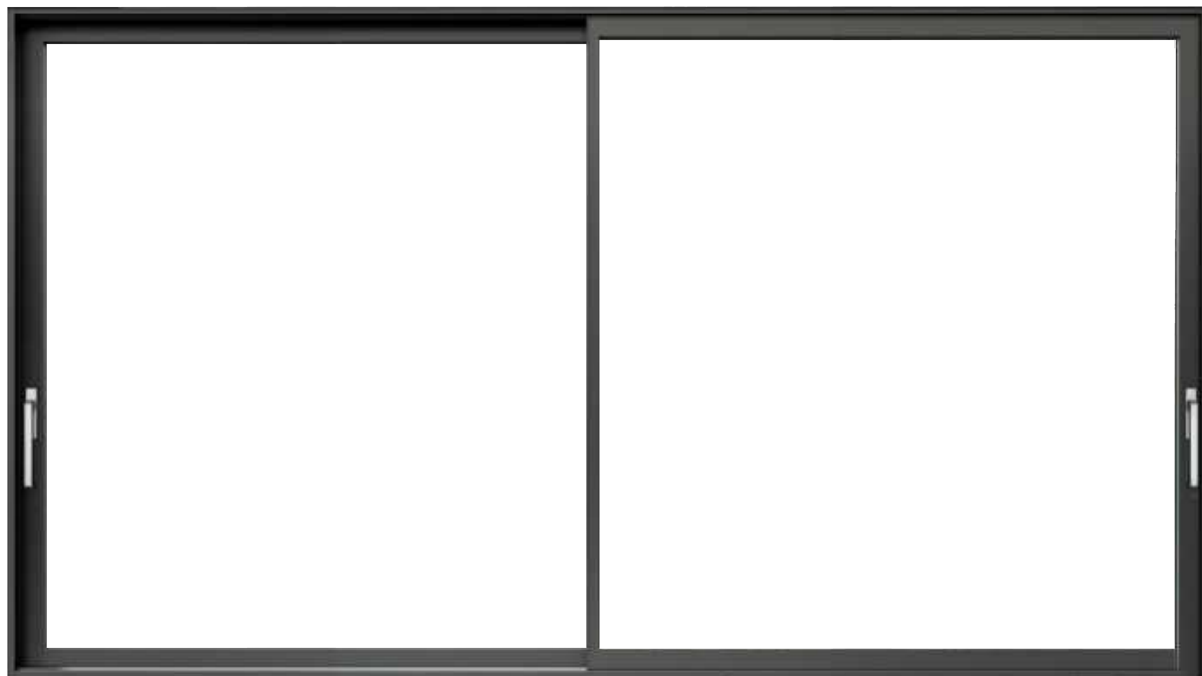


Classic80 Outward-opening Door

- High-strength 6063-T5 aluminum alloy ultra-high precision profile with high tensile strength and high flatness
- Anti-theft, durable and safer - high load-bearing hardware system, 200,000 times of barrier-free opening, up to 300kg load-bearing hinge, reaching the European RC3 anti-theft level, meeting the service life of more than 30 years.
- The door leaves are seamlessly welded indoors, the frame leaves are flush, and cylindrical hinges are used.

Product parameters

Thickness	Frame width	Fan width	Hardware / Handle	Standard glass	Thermal	Soundproof	Airtight	Watertight	Wind pressure
2.0mm	68.5mm	66.5mm	GIESSE/HOPPE	6G+18A+6G	6 Level	3 Level	5 Level	3 Level	6 Level



Classic 139 Sliding door

Product features

- High-strength 6063-T5 aluminum alloy, multi-cavity profile structure, wall thickness 1.6mm, improves overall performance
- Vertical isotherm design and three seals provide better heat insulation and sealing effect.
- Use imported hardware system and high load-bearing outward opening hardware.

Product parameters

Thickness	Frame width	Fan width	Hardware / Handle	Standard glass	Thermal	Soundproof	Airtight	Watertight	Wind pressure
2.0mm	35mm	94mm	GU hardware	6G+12A+6G	5 Level	2 Level	5 Level	3 Level	5 Level



Classic 210 three-track sliding door

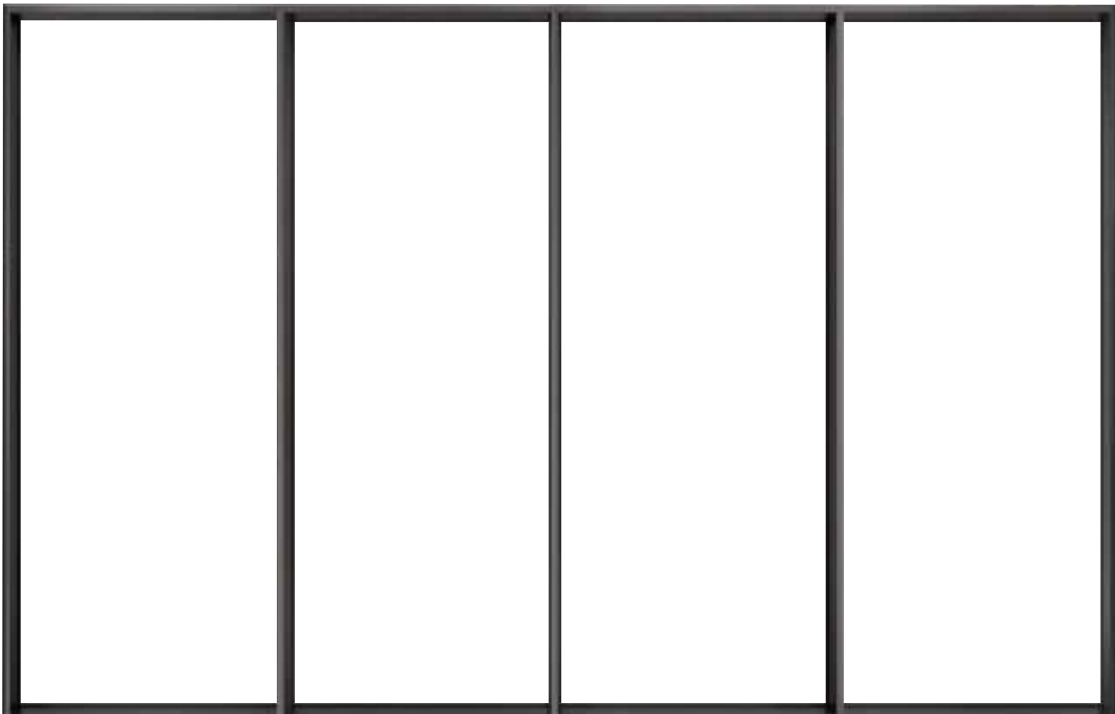
- High-strength 6063-T5 aluminum alloy, multi-cavity profile structure, wall thickness 1.6mm, improves overall performance
- Vertical isotherm design and three seals provide better heat insulation and sealing effect.
- Use imported hardware system and high load-bearing outward opening hardware.

Product parameters

Thickness	Frame width	Fan width	Hardware / Handle	Standard glass	Thermal	Soundproof	Airtight	Watertight	Wind pressure
2.0mm	35mm	94mm	GUhardware	6G+12A+6G	5 Level	2 Level	5 Level	3 Level	5Level



XC35 Curtain Door



- High-strength 6063-T5 aluminum alloy, multi-cavity profile structure, wall thickness 1.6mm, improves overall performance
- Vertical isotherm design and three seals provide better heat insulation and sealing effect.
- Use imported hardware system and high load-bearing outward opening hardware.

Product parameters

Thickness	Frame width	Fan width	Hardware / Handle	Standard glass	Thermal	Soundproof	Airtight	Watertight	Wind pressure
2.0mm	163mm	/	/	6G+12A+6G	5 Level	2 Level	5 Level	3 Level	5 Level



Case



Solution





Thermal Break Aluminum
Tilt Turn Window



Aluminum Clad Wood
Tilt Turn Window



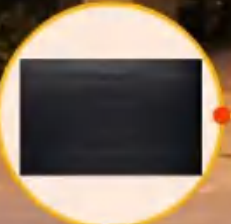
Crank Open Window



Folding Door



Sliding Door



Garage Door



Entry Door



Curtain Wall



On-site installation example





Successful Case



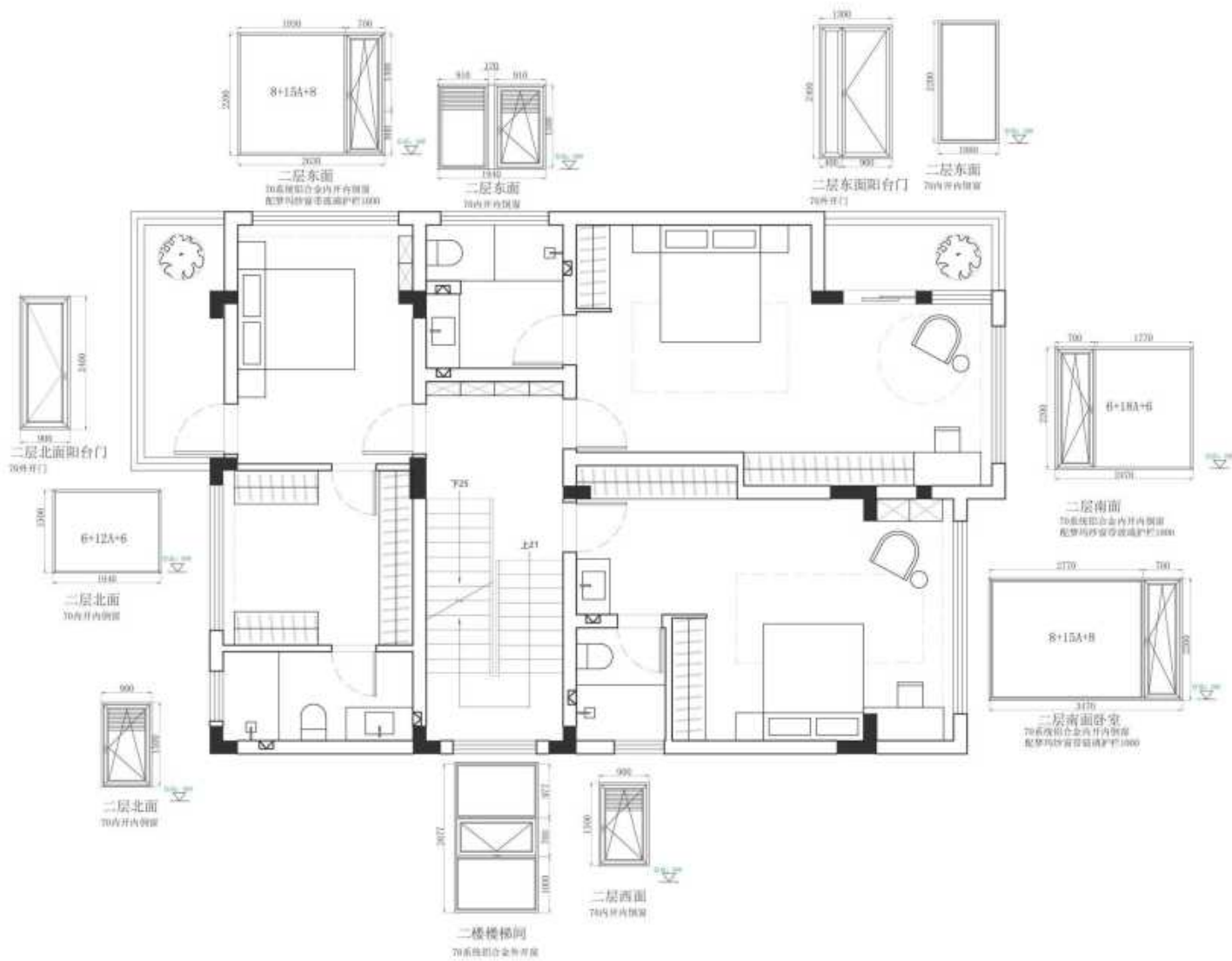




Project Door and Window Scheme
Design Drawing drawings

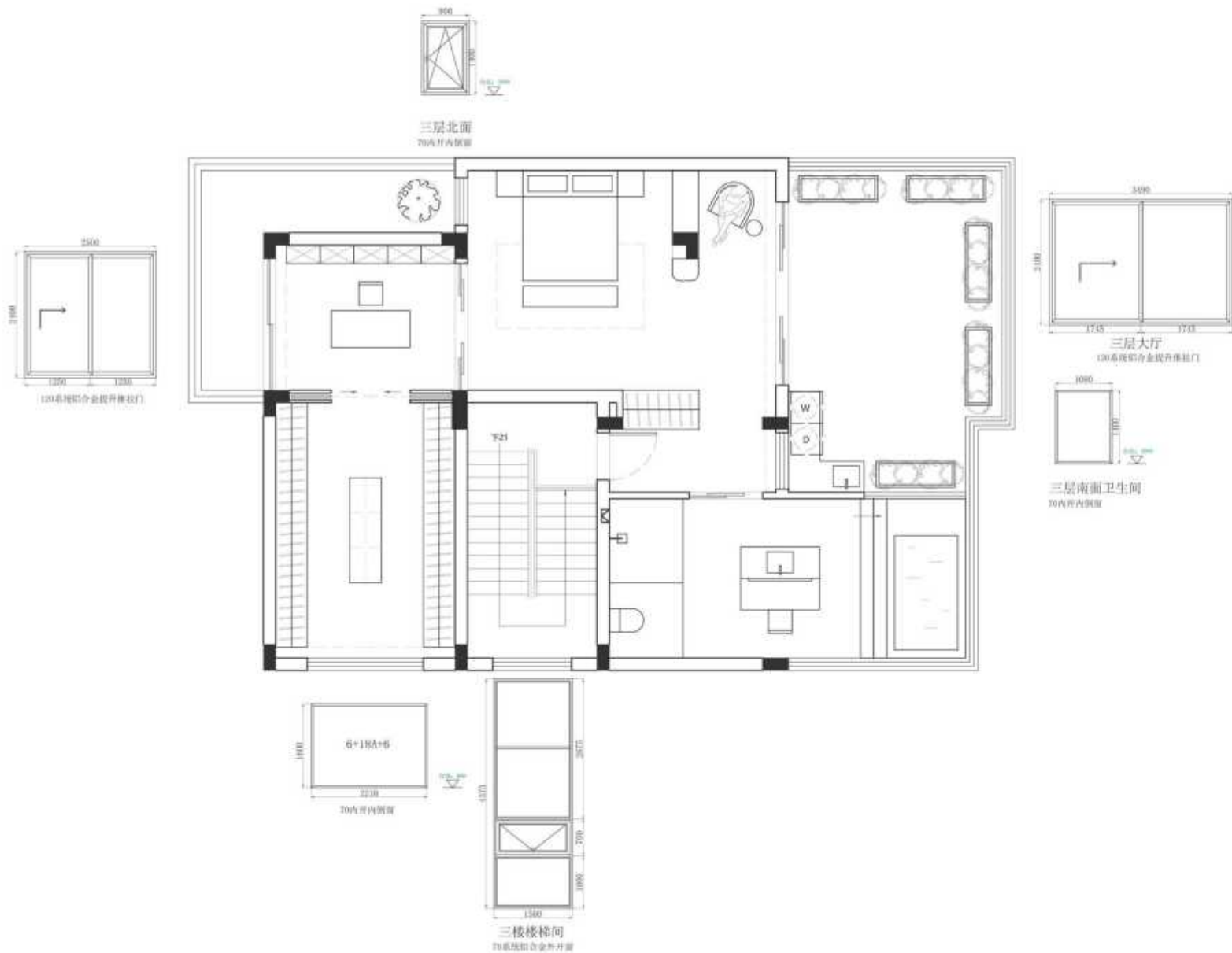
2F

装订线

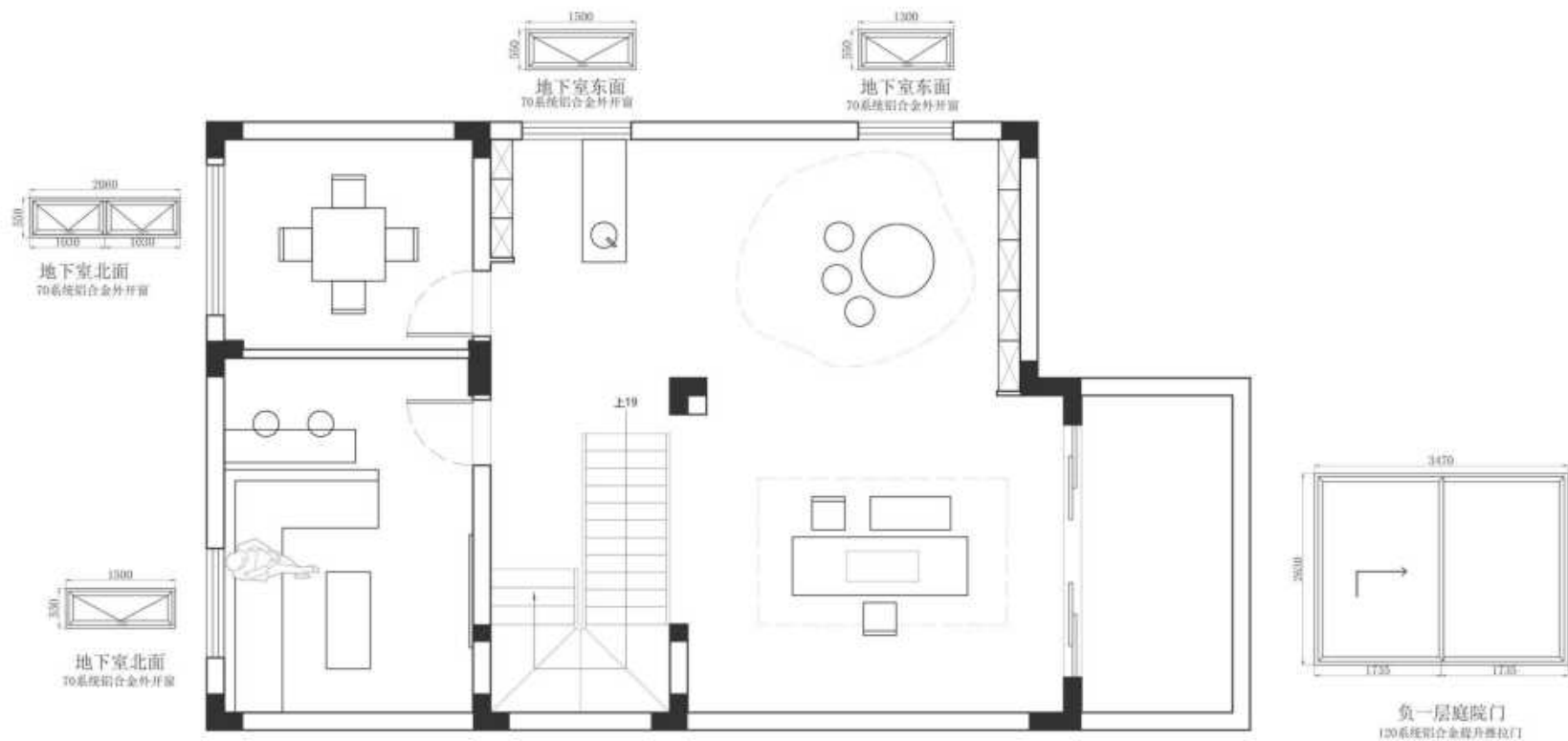


3F

装订线



地下室





Still Continue.....