



Test Report

No.: SHHL1907040031PK

Date: AUG. 05, 2019

Page 1 of 15

ISTA 6 - Amazon.com – SIOC - A Test Report_External

VERSION DATE: 4/5/2018

ITEM INFORMATION

Vendor/Seller Name: E & E CO. LTD. (DBA JLA HOME)

ASIN: B01B4NIEJA

Item: MP12-2531

Certification Passed:

- Pass / Frustration Free Packaging (FFP)
- Pass / Ships in Own Container (SIOC)
- Fail / Enforced Over Box (EOB)

LAB INFORMATION

Testing Lab: SGS-CSTC Standards Technical Services (Shanghai) Co., Ltd.

Location: 3RD BUILDING, LANE 3999, XIUPU ROAD, PUDONG NEW AREA, SHANGHAI

Date of Test: JUL. 24, 2019 TO AUG. 05, 2019

ISTA Member/ Lab Tech: ST-2376/Shooin Chang

TEST RESULTS

Tested Item Summary		
Number of Samples Tested	Number of Samples Passed	Number of Samples Failed
1	1	0



Unless otherwise agreed in writing, this document is issued by the Company subject to its General Conditions of Service printed overleaf, available on request or accessible at <http://www.sgs.com/en/Terms-and-Conditions.aspx> and, for electronic format documents, subject to Terms and Conditions for Electronic Documents at <http://www.sgs.com/en/Terms-and-Conditions/Terms-e-Document.aspx>. Attention is drawn to the limitation of liability, indemnification and jurisdiction issues defined therein. Any holder of this document is advised that information contained hereon reflects the Company's findings at the time of its intervention only and within the limits of Client's instructions, if any. The Company's sole responsibility is to its Client and this document does not exonerate parties to a transaction from exercising all their rights and obligations under the transaction documents. This document cannot be reproduced except in full, without prior written approval of the Company. Any unauthorized alteration, forgery or falsification of the content or appearance of this document is unlawful and offenders may be prosecuted to the fullest extent of the law. Unless otherwise stated the results shown in this test report refer only to the sample(s) tested and such sample(s) are retained for 30 days only.

Attention: To check the authenticity of testing /inspection report & certificate, please contact us at telephone: (86-755) 8307 1443, or email: CN.Doccheck@sgs.com

4th Building, No.889, Yishan Road, Xuhui District Shanghai, China 200233 t (86) 400 960 9661 f (86-21) 6115 6899 www.sgs.com.cn
 中国·上海·徐汇区宜山路889号4号楼 邮编: 200233 t (86) 400 960 9661 f (86-21) 6115 6899 e sgs.china@sgs.com



Test Report

No.: SHHL1907040031PK

Date: AUG. 05, 2019

Page 2 of 15

Post Test Comments:

Overview	The product was over packaged in a double wall corrugated box. The master container is glued joint, secured by pressure sensitive tape. The packaged product remained intact after all test blocks.
Product Condition	Product was in good condition after testing.
Packaging Condition	Packaging was in good condition after testing. The over pack box has some crushed corners.

LAB TEST REQUEST {filled out by requestor}

Test Requestor	E & E CO. LTD.(DBA JLA HOME)
Project Name	ISTA 6-Amazon.com-SIOC:2018 -Type A
Submission Date	07/24/2019
Due Date	08/05/2019

ASIN	Manufacturer	Description
B01B4NIEJA	E & E CO. LTD.(DBA JLA HOME)	CELESTE DUVET SET

Package Dimension	Catalog Dims and girth / Actual dims and girth measured by lab: 17-1/2" L X 15-3/4" W X 10"H and 69"
Package Weight	Catalog Weight / Actual weight by lab: 10.87lb
Classification 1	FFP
Classification 2	Parcel
Test Type	ISTA 6 –Amazon.com SIOC - A
Fragile/Non-Fragile	Non-Fragile
Value Add Packaging (VAP)	Yes
Value Add Packaging (VAP) Info	Material specifications: Corrugated carton
Total Test Samples	1 unit
Additional Notes	N/A



Unless otherwise agreed in writing, this document is issued by the Company subject to its General Conditions of Service printed overleaf, available on request or accessible at <http://www.sgs.com/en/Terms-and-Conditions.aspx> and, for electronic format documents, subject to Terms and Conditions for Electronic Documents at <http://www.sgs.com/en/Terms-and-Conditions/Terms-e-Documents.aspx>. Attention is drawn to the limitation of liability, indemnification and jurisdiction issues defined therein. Any holder of this document is advised that information contained hereon reflects the Company's findings at the time of its intervention only and within the limits of Client's instructions, if any. The Company's sole responsibility is to its Client and this document does not exonerate parties to a transaction from exercising all their rights and obligations under the transaction documents. This document cannot be reproduced except in full, without prior written approval of the Company. Any unauthorized alteration, forgery or falsification of the content or appearance of this document is unlawful and offenders may be prosecuted to the fullest extent of the law. Unless otherwise stated the results shown in this test report refer only to the sample(s) tested and such sample(s) are retained for 30 days only.

Attention: To check the authenticity of testing/inspection report & certificate, please contact us at telephone: (86-755) 8307 1443, or email: CN.Doccheck@sgs.com

4th Building, No.889, Yishan Road, Xuhui District Shanghai, China 200233 t (86) 400 960 9661 f (86-21) 6115 6899 www.sgs.com.cn
 中国·上海·徐汇区宜山路889号4号楼 邮编: 200233 t (86) 400 960 9661 f (86-21) 6115 6899 e sgs.china@sgs.com

PRE-TEST INSPECTION {filled out by lab}

Product Condition	Package was not opened before testing to review product.
Package Condition	Material specifications: Corrugated carton
Package Condition before testing	<input checked="" type="checkbox"/> ORIGINAL as arrived in the lab for testing <input type="checkbox"/> NEW re-packaged with new materials before testing
Corrugated Info (Box Cert if available)	no Box Cert
Dunnage Info	N/A
Additional Notes	N/A

PRE-TEST PICTURES

Six sides of the ASIN package should be numbered and photographed. If a box cert is present it should be taken and recorded. Isometric picture views should be taken as called out below. Pictures of special call outs and or damage should have description of location and detailed information in the text box below the picture.



Unless otherwise agreed in writing, this document is issued by the Company subject to its General Conditions of Service printed overleaf, available on request or accessible at <http://www.sgs.com/en/Terms-and-Conditions.aspx> and, for electronic format documents, subject to Terms and Conditions for Electronic Documents at <http://www.sgs.com/en/Terms-and-Conditions/Terms-e-Document.aspx>. Attention is drawn to the limitation of liability, indemnification and jurisdiction issues defined therein. Any holder of this document is advised that information contained hereon reflects the Company's findings at the time of its intervention only and within the limits of Client's instructions, if any. The Company's sole responsibility is to its Client and this document does not exonerate parties to a transaction from exercising all their rights and obligations under the transaction documents. This document cannot be reproduced except in full, without prior written approval of the Company. Any unauthorized alteration, forgery or falsification of the content or appearance of this document is unlawful and offenders may be prosecuted to the fullest extent of the law. Unless otherwise stated the results shown in this test report refer only to the sample(s) tested and such sample(s) are retained for 30 days only.

Attention: To check the authenticity of testing /inspection report & certificate, please contact us at telephone: (86-755) 8307 1443, or email: CN.Doccheck@sgs.com

4th Building, No.889, Yishan Road, Xuhui District Shanghai, China 200233 t (86) 400 960 9661 f (86-21) 6115 6899 www.sgs.com.cn
 中国·上海·徐汇区宜山路889号4号楼 邮编: 200233 t (86) 400 960 9661 f (86-21) 6115 6899 e sgs.china@sgs.com



Signed for and on behalf of
 SGS-CSTC Standards Technical Services (Shanghai) Co., Ltd.




Yomoro Gu
 Authorized Signatory



Unless otherwise agreed in writing, this document is issued by the Company subject to its General Conditions of Service printed overleaf, available on request or accessible at <http://www.sgs.com/en/Terms-and-Conditions.aspx> and, for electronic format documents, subject to Terms and Conditions for Electronic Documents at <http://www.sgs.com/en/Terms-and-Conditions/Terms-e-Documents.aspx>. Attention is drawn to the limitation of liability, indemnification and jurisdiction issues defined therein. Any holder of this document is advised that information contained hereon reflects the Company's findings at the time of its intervention only and within the limits of Client's instructions, if any. The Company's sole responsibility is to its Client and this document does not exonerate parties to a transaction from exercising all their rights and obligations under the transaction documents. This document cannot be reproduced except in full, without prior written approval of the Company. Any unauthorized alteration, forgery or falsification of the content or appearance of this document is unlawful and offenders may be prosecuted to the fullest extent of the law. Unless otherwise stated the results shown in this test report refer only to the sample(s) tested and such sample(s) are retained for 30 days only.

Attention: To check the authenticity of testing/inspection report & certificate, please contact us at telephone: (86-755) 8307 1443, or email: CN.Doccheck@sgs.com

4th Building, No.889, Yishan Road, Xuhui District Shanghai, China 200233 t (86) 400 960 9661 f (86-21) 6115 6899 www.sgs.com.cn
 中国·上海·徐汇区宜山路889号4号楼 邮编: 200233 t (86) 400 960 9661 f (86-21) 6115 6899 e sgs.china@sgs.com

TEST DETAIL

Items in black were completed and values updated. Items left in gray were not completed.







Test	Value	P/F	P/F	P/F	P/F	OBSERVATIONS
BLOCK 1: Temp and Humidity	24 °C 55%R.H.					Ambient Lab Temp 12+ hours
BLOCK 2: Drop 1-7	18 INCHES	P	NA	NA	NA	Slight corner crushing to box
BLOCK 2: Drop 8	36 INCHES	P	NA	NA	NA	Face 3 drop and no visible package damage
BLOCK 2: Drop 9	18 INCHES	P	NA	NA	NA	Face 3 drop and no visible package damage
BLOCK 12: Vib with Top Load Face 3	95 Lbs.	P	NA	NA	NA	60mintues and no visible package damage
BLOCK 12: Vib with Top Load Face 4	60 Lbs.	P	NA	NA	NA	30mintues and no visible package damage
BLOCK 12: Vib with Top Load Face 6	50 Lbs.	P	NA	NA	NA	30mintues and no visible package damage
BLOCK 12: Vib Face 3 (Pick-Up Truck)	0 Lbs.	P	NA	NA	NA	30mintues and no visible package damage
BLOCK 15: Drop 10-15	18 INCHES	P	NA	NA	NA	Slight corner crushing to box
BLOCK 15: Drop 16	36 INCHES	P	NA	NA	NA	Face 3 drop and no visible package damage
BLOCK 15: Drop 17	18 INCHES	P	NA	NA	NA	Hazard Drop on Face 3, and no visible package damage
BLOCK 21: Rotational Edge Drop	Pass/fail	NA	NA	NA	NA	
BLOCK 22: Full Rotational Flat Drop	Pass/fail	NA	NA	NA	NA	
BLOCK 23: Bridge Impact	Pass/fail	NA	NA	NA	NA	
BLOCK 24: Concentrated Edge Impact	Pass/fail	NA	NA	NA	NA	
BLOCK 25: Leak Test	Pass/fail	NA	NA	NA	NA	



Unless otherwise agreed in writing, this document is issued by the Company subject to its General Conditions of Service printed overleaf, available on request or accessible at <http://www.sgs.com/en/Terms-and-Conditions.aspx> and, for electronic format documents, subject to Terms and Conditions for Electronic Documents at <http://www.sgs.com/en/Terms-and-Conditions/Terms-e-Documents.aspx>. Attention is drawn to the limitation of liability, indemnification and jurisdiction issues defined therein. Any holder of this document is advised that information contained hereon reflects the Company's findings at the time of its intervention only and within the limits of Client's instructions, if any. The Company's sole responsibility is to its Client and this document does not exonerate parties to a transaction from exercising all their rights and obligations under the transaction documents. This document cannot be reproduced except in full, without prior written approval of the Company. Any unauthorized alteration, forgery or falsification of the content or appearance of this document is unlawful and offenders may be prosecuted to the fullest extent of the law. Unless otherwise stated the results shown in this test report refer only to the sample(s) tested and such sample(s) are retained for 30 days only.
Attention: To check the authenticity of testing/inspection report & certificate, please contact us at telephone: (86-755) 8307 1443, or email: CN.Doccheck@sgs.com
 4th Building, No.889, Yishan Road, Xuhui District Shanghai, China 200233 t (86) 400 960 9661 f (86-21) 6115 6899 www.sgs.com.cn
 中国·上海·徐汇区宜山路889号4号楼 邮编: 200233 t (86) 400 960 9661 f (86-21) 6115 6899 e sgs.china@sgs.com

TEST PICTURES

Pictures should be taken of each block test set up along with a post picture taken of the item at the end of each test block. Additional pictures of damage should have locations noted, size of damages measured, and written in text box below them.

		<p>NA</p>
<p>Block 2 Drop 1 Test Set Up</p>	<p>Block 2 Drop 1 Post Test Item Picture</p>	<p>Extra #</p>
		<p>NA</p>
<p>Block 2 Drop 2 Test Set Up</p>	<p>Block 2 Drop 2 Post Test Item Picture</p>	<p>Extra #</p>
		<p>NA</p>
<p>Block 2 Drop 3 Test Set Up</p>	<p>Block 2 Drop 3 Post Test Item Picture</p>	<p>Extra #</p>



Unless otherwise agreed in writing, this document is issued by the Company subject to its General Conditions of Service printed overleaf, available on request or accessible at <http://www.sgs.com/en/Terms-and-Conditions.aspx> and, for electronic format documents, subject to Terms and Conditions for Electronic Documents at <http://www.sgs.com/en/Terms-and-Conditions/Terms-e-Documents.aspx>. Attention is drawn to the limitation of liability, indemnification and jurisdiction issues defined therein. Any holder of this document is advised that information contained hereon reflects the Company's findings at the time of its intervention only and within the limits of Client's instructions, if any. The Company's sole responsibility is to its Client and this document does not exonerate parties to a transaction from exercising all their rights and obligations under the transaction documents. This document cannot be reproduced except in full, without prior written approval of the Company. Any unauthorized alteration, forgery or falsification of the content or appearance of this document is unlawful and offenders may be prosecuted to the fullest extent of the law. Unless otherwise stated the results shown in this test report refer only to the sample(s) tested and such sample(s) are retained for 30 days only.

Attention: To check the authenticity of testing /inspection report & certificate, please contact us at telephone: (86-755) 8307 1443, or email: CN.Doccheck@sgs.com

4th Building, No.889, Yishan Road, Xuhui District Shanghai, China 200233 t (86) 400 960 9661 f (86-21) 6115 6899 www.sgsgroup.com.cn
 中国·上海·徐汇区宜山路889号4号楼 邮编: 200233 t (86) 400 960 9661 f (86-21) 6115 6899 e sgs.china@sgs.com

TEST PICTURES {continued}

		NA
Block 2 Drop 4 Test Set Up	Block 2 Drop 4 Post Test Item Picture	Extra #

		NA
Block 2 Drop 5 Test Set Up	Block 2 Drop 5 Post Test Item Picture	Extra #

		NA
Block 2 Drop 6 Test Set Up	Block 2 Drop 6 Post Test Item Picture	Extra #



Unless otherwise agreed in writing, this document is issued by the Company subject to its General Conditions of Service printed overleaf, available on request or accessible at <http://www.sgs.com/en/Terms-and-Conditions.aspx> and, for electronic format documents, subject to Terms and Conditions for Electronic Documents at <http://www.sgs.com/en/Terms-and-Conditions/Terms-e-Documents.aspx>. Attention is drawn to the limitation of liability, indemnification and jurisdiction issues defined therein. Any holder of this document is advised that information contained hereon reflects the Company's findings at the time of its intervention only and within the limits of Client's instructions, if any. The Company's sole responsibility is to its Client and this document does not exonerate parties to a transaction from exercising all their rights and obligations under the transaction documents. This document cannot be reproduced except in full, without prior written approval of the Company. Any unauthorized alteration, forgery or falsification of the content or appearance of this document is unlawful and offenders may be prosecuted to the fullest extent of the law. Unless otherwise stated the results shown in this test report refer only to the sample(s) tested and such sample(s) are retained for 30 days only.

Attention: To check the authenticity of testing /inspection report & certificate, please contact us at telephone: (86-755) 8307 1443, or email: CN.Doccheck@sgs.com

4th Building, No.889, Yishan Road, Xuhui District Shanghai, China 200233 t (86) 400 960 9661 f (86-21) 6115 6899 www.sgsgroup.com.cn
 中国·上海·徐汇区宜山路889号4号楼 邮编: 200233 t (86) 400 960 9661 f (86-21) 6115 6899 e sgs.china@sgs.com

TEST PICTURES {continued}

		<p>NA</p>
<p>Block 2 Drop 7 Test Set Up</p>	<p>Block 2 Drop 7 Post Test Item Picture</p>	<p>Extra #</p>

		<p>NA</p>
<p>Block 2 Drop 8 Test Set Up</p>	<p>Block 2 Drop 8 Post Test Item Picture</p>	<p>Extra #</p>

		<p>NA</p>
<p>Block 2 Drop 9 Test Set Up</p>	<p>Block 2 Drop 9 Post Test Item Picture</p>	<p>Extra #</p>



Unless otherwise agreed in writing, this document is issued by the Company subject to its General Conditions of Service printed overleaf, available on request or accessible at <http://www.sgs.com/en/Terms-and-Conditions.aspx> and, for electronic format documents, subject to Terms and Conditions for Electronic Documents at <http://www.sgs.com/en/Terms-and-Conditions/Terms-e-Document.aspx>. Attention is drawn to the limitation of liability, indemnification and jurisdiction issues defined therein. Any holder of this document is advised that information contained hereon reflects the Company's findings at the time of its intervention only and within the limits of Client's instructions, if any. The Company's sole responsibility is to its Client and this document does not exonerate parties to a transaction from exercising all their rights and obligations under the transaction documents. This document cannot be reproduced except in full, without prior written approval of the Company. Any unauthorized alteration, forgery or falsification of the content or appearance of this document is unlawful and offenders may be prosecuted to the fullest extent of the law. Unless otherwise stated the results shown in this test report refer only to the sample(s) tested and such sample(s) are retained for 30 days only.

Attention: To check the authenticity of testing /inspection report & certificate, please contact us at telephone: (86-755) 8307 1443, or email: CN.Doccheck@sgs.com

4th Building, No.889, Yishan Road, Xuhui District Shanghai, China 200233 t (86) 400 960 9661 f (86-21) 6115 6899 www.sgsgroup.com.cn
 中国·上海·徐汇区宜山路889号4号楼 邮编: 200233 t (86) 400 960 9661 f (86-21) 6115 6899 e sgs.china@sgs.com

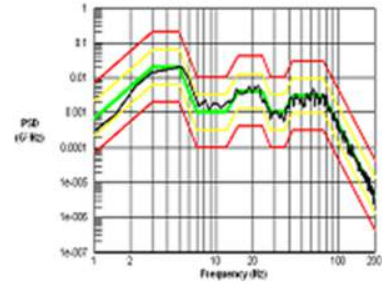
TEST PICTURES {continued}



Block 12 Face 3 Test Set up



Block 12 Face 3 Post Test Item Picture



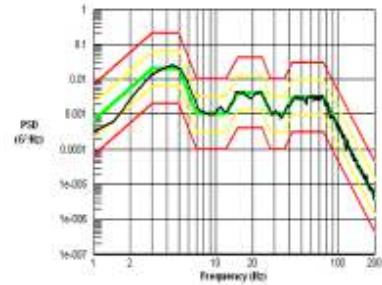
Block 12 Face 3 Test Vibration Profile



Block 12 Face 4 Test Set up



Block 12 Face 4 Post Test Item Picture



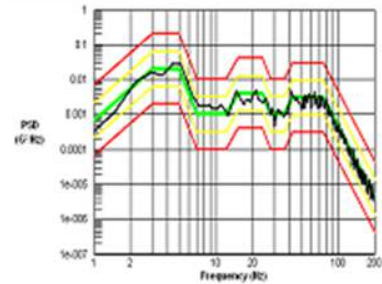
Block 12 Face 4 Test Vibration Profile



Block 12 Face 6 Test Set up



Block 12 Face 6 Post Test Item Picture





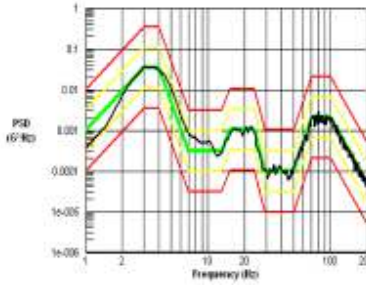




Block 12 Face 6 Test Vibration Profile



Unless otherwise agreed in writing, this document is issued by the Company subject to its General Conditions of Service printed overleaf, available on request or accessible at <http://www.sgs.com/en/Terms-and-Conditions.aspx> and, for electronic format documents, subject to Terms and Conditions for Electronic Documents at <http://www.sgs.com/en/Terms-and-Conditions/Terms-e-Document.aspx>. Attention is drawn to the limitation of liability, indemnification and jurisdiction issues defined therein. Any holder of this document is advised that information contained hereon reflects the Company's findings at the time of its intervention only and within the limits of Client's instructions, if any. The Company's sole responsibility is to its Client and this document does not exonerate parties to a transaction from exercising all their rights and obligations under the transaction documents. This document cannot be reproduced except in full, without prior written approval of the Company. Any unauthorized alteration, forgery or falsification of the content or appearance of this document is unlawful and offenders may be prosecuted to the fullest extent of the law. Unless otherwise stated the results shown in this test report refer only to the sample(s) tested and such sample(s) are retained for 30 days only.

Attention: To check the authenticity of testing /inspection report & certificate, please contact us at telephone: (86-755) 8307 1443, or email: CN.Doccheck@sgs.com
 4th Building, No.889, Yishan Road, Xuhui District Shanghai, China 200233 t (86) 400 960 9661 f (86-21) 6115 6899 www.sgsgroup.com.cn
 中国·上海·徐汇区宜山路889号4号楼 邮编: 200233 t (86) 400 960 9661 f (86-21) 6115 6899 e sgs.china@sgs.com

TEST PICTURES {continued}

		
<p>Block 12 Face 3 (Pick-Up) Test Set up</p>	<p>Block 12 Face 3 Post Test Item Picture</p>	<p>Block 12 Face 3 Test Vibration Profile</p>
		<p>NA</p>
<p>Block 15 Drop 10 Test Set Up</p>	<p>Block 15 Drop 10 Post Test Item Picture</p>	<p>Extra #</p>
		<p>NA</p>
<p>Block 15 Drop 11 Test Set Up</p>	<p>Block 15 Drop 11 Post Test Item Picture</p>	<p>Extra #</p>



Unless otherwise agreed in writing, this document is issued by the Company subject to its General Conditions of Service printed overleaf, available on request or accessible at <http://www.sgs.com/en/Terms-and-Conditions.aspx> and, for electronic format documents, subject to Terms and Conditions for Electronic Documents at <http://www.sgs.com/en/Terms-and-Conditions/Terms-e-Document.aspx>. Attention is drawn to the limitation of liability, indemnification and jurisdiction issues defined therein. Any holder of this document is advised that information contained hereon reflects the Company's findings at the time of its intervention only and within the limits of Client's instructions, if any. The Company's sole responsibility is to its Client and this document does not exonerate parties to a transaction from exercising all their rights and obligations under the transaction documents. This document cannot be reproduced except in full, without prior written approval of the Company. Any unauthorized alteration, forgery or falsification of the content or appearance of this document is unlawful and offenders may be prosecuted to the fullest extent of the law. Unless otherwise stated the results shown in this test report refer only to the sample(s) tested and such sample(s) are retained for 30 days only.

Attention: To check the authenticity of testing /inspection report & certificate, please contact us at telephone: (86-755) 8307 1443, or email: CN.Doccheck@sgs.com

4th Building, No.889, Yishan Road, Xuhui District Shanghai, China 200233 t (86) 400 960 9661 f (86-21) 6115 6899 www.sgsgroup.com.cn
 中国·上海·徐汇区宜山路889号4号楼 邮编: 200233 t (86) 400 960 9661 f (86-21) 6115 6899 e sgs.china@sgs.com

TEST PICTURES {continued}

		NA
Block 15 Drop 12 Test Set Up	Block 15 Drop 12 Post Test Item Picture	Extra #

		NA
Block 15 Drop 13 Test Set Up	Block 15 Drop 13 Post Test Item Picture	Extra #

		NA
Block 15 Drop 14 Test Set Up	Block 15 Drop 14 Post Test Item Picture	Extra #



Unless otherwise agreed in writing, this document is issued by the Company subject to its General Conditions of Service printed overleaf, available on request or accessible at <http://www.sgs.com/en/Terms-and-Conditions.aspx> and, for electronic format documents, subject to Terms and Conditions for Electronic Documents at <http://www.sgs.com/en/Terms-and-Conditions/Terms-e-Document.aspx>. Attention is drawn to the limitation of liability, indemnification and jurisdiction issues defined therein. Any holder of this document is advised that information contained hereon reflects the Company's findings at the time of its intervention only and within the limits of Client's instructions, if any. The Company's sole responsibility is to its Client and this document does not exonerate parties to a transaction from exercising all their rights and obligations under the transaction documents. This document cannot be reproduced except in full, without prior written approval of the Company. Any unauthorized alteration, forgery or falsification of the content or appearance of this document is unlawful and offenders may be prosecuted to the fullest extent of the law. Unless otherwise stated the results shown in this test report refer only to the sample(s) tested and such sample(s) are retained for 30 days only.

Attention: To check the authenticity of testing /inspection report & certificate, please contact us at telephone: (86-755) 8307 1443, or email: CN.Doccheck@sgs.com

4th Building, No.889, Yishan Road, Xuhui District Shanghai, China 200233 t (86) 400 960 9661 f (86-21) 6115 6899 www.sgsgroup.com.cn
 中国·上海·徐汇区宜山路889号4号楼 邮编: 200233 t (86) 400 960 9661 f (86-21) 6115 6899 e sgs.china@sgs.com

TEST PICTURES {continued}

		NA
Block 15 Drop 15 Test Set Up	Block 15 Drop 15 Post Test Item Picture	Extra #

		NA
Block 15 Drop 16 Test Set Up	Block 15 Drop 16 Post Test Item Picture	Extra #

		NA
Block 15 Drop 17 Test Set Up	Block 15 Drop 17 Post Test Item Picture	Extra #



Unless otherwise agreed in writing, this document is issued by the Company subject to its General Conditions of Service printed overleaf, available on request or accessible at <http://www.sgs.com/en/Terms-and-Conditions.aspx> and, for electronic format documents, subject to Terms and Conditions for Electronic Documents at <http://www.sgs.com/en/Terms-and-Conditions/Terms-e-Document.aspx>. Attention is drawn to the limitation of liability, indemnification and jurisdiction issues defined therein. Any holder of this document is advised that information contained hereon reflects the Company's findings at the time of its intervention only and within the limits of Client's instructions, if any. The Company's sole responsibility is to its Client and this document does not exonerate parties to a transaction from exercising all their rights and obligations under the transaction documents. This document cannot be reproduced except in full, without prior written approval of the Company. Any unauthorized alteration, forgery or falsification of the content or appearance of this document is unlawful and offenders may be prosecuted to the fullest extent of the law. Unless otherwise stated the results shown in this test report refer only to the sample(s) tested and such sample(s) are retained for 30 days only.

Attention: To check the authenticity of testing /inspection report & certificate, please contact us at telephone: (86-755) 8307 1443, or email: CN.Doccheck@sgs.com

4th Building, No.889, Yishan Road, Xuhui District Shanghai, China 200233 t (86) 400 960 9661 f (86-21) 6115 6899 www.sgsgroup.com.cn
 中国·上海·徐汇区宜山路889号4号楼 邮编: 200233 t (86) 400 960 9661 f (86-21) 6115 6899 e sgs.china@sgs.com

TEST PICTURES {continued}

NA	NA	NA
Block 21 Test Set Up	Block 21 Post Test Item Picture	Extra #

NA	NA	NA
Block 22 Test Set Up	Block 22 Post Test Item Picture	Extra #

NA	NA	NA
Block 23 Test Set Up	Block 23 Post Test Item Picture	Extra #



Unless otherwise agreed in writing, this document is issued by the Company subject to its General Conditions of Service printed overleaf, available on request or accessible at <http://www.sgs.com/en/Terms-and-Conditions.aspx> and, for electronic format documents, subject to Terms and Conditions for Electronic Documents at <http://www.sgs.com/en/Terms-and-Conditions/Terms-e-Documents.aspx>. Attention is drawn to the limitation of liability, indemnification and jurisdiction issues defined therein. Any holder of this document is advised that information contained hereon reflects the Company's findings at the time of its intervention only and within the limits of Client's instructions, if any. The Company's sole responsibility is to its Client and this document does not exonerate parties to a transaction from exercising all their rights and obligations under the transaction documents. This document cannot be reproduced except in full, without prior written approval of the Company. Any unauthorized alteration, forgery or falsification of the content or appearance of this document is unlawful and offenders may be prosecuted to the fullest extent of the law. Unless otherwise stated the results shown in this test report refer only to the sample(s) tested and such sample(s) are retained for 30 days only.

Attention: To check the authenticity of testing /inspection report & certificate, please contact us at telephone: (86-755) 8307 1443, or email: CN.Doccheck@sgs.com

4th Building, No.889, Yishan Road, Xuhui District Shanghai, China 200233 t (86) 400 960 9661 f (86-21) 6115 6899 www.sgs.com.cn
 中国·上海·徐汇区宜山路889号4号楼 邮编: 200233 t (86) 400 960 9661 f (86-21) 6115 6899 e sgs.china@sgs.com

TEST PICTURES {continued}

NA	NA	NA
Block 24 Test Set Up	Block 24 Post Test Item Picture	Extra #

NA	NA	NA
Block 25 Test Set Up	Block 25 Post Test Item Picture	Extra #

POST TEST PICTURES

Isometric views of the box should be taken as called out in first two picture spots. An exploded BOM view should be added to the third slot. Additional pictures of damage should have locations noted, size of damages measured, and written in text box below them.

		
ISO #1 Side 1/2/5	ISO #2 Sides 3/4/6	Exploded BOM View



Unless otherwise agreed in writing, this document is issued by the Company subject to its General Conditions of Service printed overleaf, available on request or accessible at <http://www.sgs.com/en/Terms-and-Conditions.aspx> and, for electronic format documents, subject to Terms and Conditions for Electronic Documents at <http://www.sgs.com/en/Terms-and-Conditions/Terms-e-Document.aspx>. Attention is drawn to the limitation of liability, indemnification and jurisdiction issues defined therein. Any holder of this document is advised that information contained hereon reflects the Company's findings at the time of its intervention only and within the limits of Client's instructions, if any. The Company's sole responsibility is to its Client and this document does not exonerate parties to a transaction from exercising all their rights and obligations under the transaction documents. This document cannot be reproduced except in full, without prior written approval of the Company. Any unauthorized alteration, forgery or falsification of the content or appearance of this document is unlawful and offenders may be prosecuted to the fullest extent of the law. Unless otherwise stated the results shown in this test report refer only to the sample(s) tested and such sample(s) are retained for 30 days only.

Attention: To check the authenticity of testing/inspection report & certificate, please contact us at telephone: (86-755) 8307 1443, or email: CN.Doccheck@sgs.com

4th Building, No.889, Yishan Road, Xuhui District Shanghai, China 200233 t (86) 400 960 9661 f (86-21) 6115 6899 www.sgsgroup.com.cn
 中国·上海·徐汇区宜山路889号4号楼 邮编: 200233 t (86) 400 960 9661 f (86-21) 6115 6899 e sgs.china@sgs.com

POST TEST PICTURES {continued}

Extra #	Extra #	Extra #

		<p align="center">NA</p>
Extra #	Extra #	Extra #

END OF REPORT



Unless otherwise agreed in writing, this document is issued by the Company subject to its General Conditions of Service printed overleaf, available on request or accessible at <http://www.sgs.com/en/Terms-and-Conditions.aspx> and, for electronic format documents, subject to Terms and Conditions for Electronic Documents at <http://www.sgs.com/en/Terms-and-Conditions/Terms-e-Document.aspx>. Attention is drawn to the limitation of liability, indemnification and jurisdiction issues defined therein. Any holder of this document is advised that information contained hereon reflects the Company's findings at the time of its intervention only and within the limits of Client's instructions, if any. The Company's sole responsibility is to its Client and this document does not exonerate parties to a transaction from exercising all their rights and obligations under the transaction documents. This document cannot be reproduced except in full, without prior written approval of the Company. Any unauthorized alteration, forgery or falsification of the content or appearance of this document is unlawful and offenders may be prosecuted to the fullest extent of the law. Unless otherwise stated the results shown in this test report refer only to the sample(s) tested and such sample(s) are retained for 30 days only.

Attention: To check the authenticity of testing /inspection report & certificate, please contact us at telephone: (86-755) 8307 1443, or email: CN.Doccheck@sgs.com

4th Building, No.889, Yishan Road, Xuhui District Shanghai, China 200233 t (86) 400 960 9661 f (86-21) 6115 6899 www.sgsgroup.com.cn
 中国·上海·徐汇区宜山路889号4号楼 邮编: 200233 t (86) 400 960 9661 f (86-21) 6115 6899 e sgs.china@sgs.com