



Dollar General Corporation
Vendor Performance Chargeback

Vendor: E & E CO LTD 16472

Chargeback #: Q1908250978

Chargeback Date: 8/25/2019 7:20:00AM

Violation Description: Short Quantity

Comments: Ordered 168 units received 8 units.

DC: D6910

PO: 17WBL1

Item: 10739005

4/23/2019 12:00:00AM

MATTRESS PAD QUEEN

Chargeback Amount: \$250.00

To View Dollar General's Domestic Vendor Manual, visit our website at
www.dgpartners.com

Vendor Performance Chargeback Disputes
Email: VNCDisputes@dollargeneral.com

Dollar General 100 Mission Ridge Goodlettsville TN 37072-2171

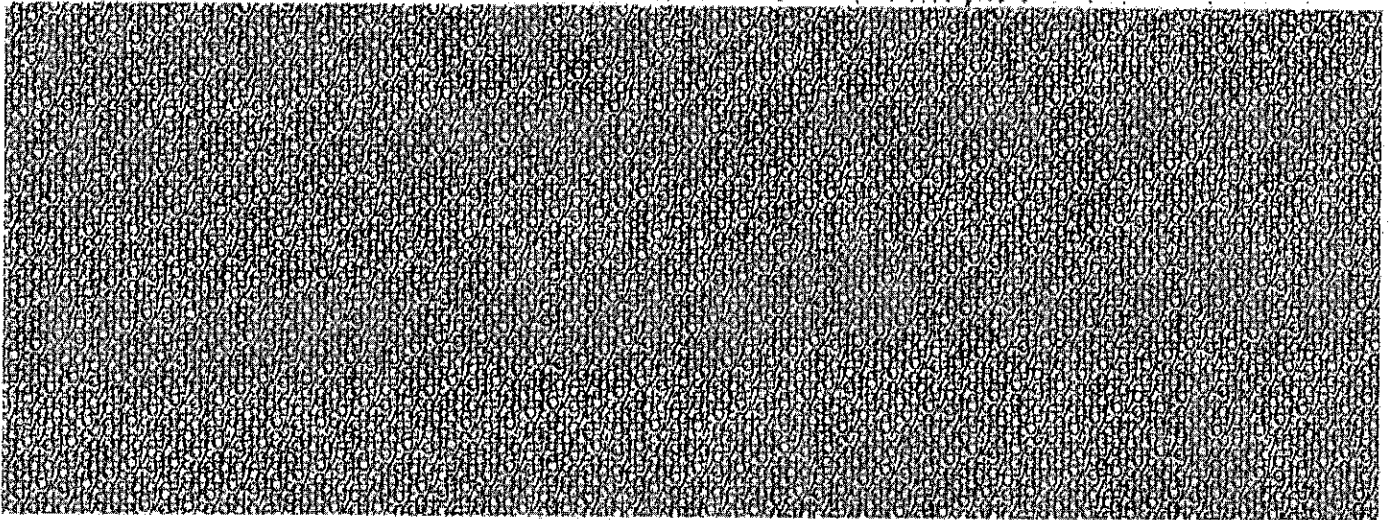
VENDOR ID 288902 AE & E CO LTD

CHECKING #947068

DATE 08/29/2019
PAGE 1

INVOICE NO	DESCRIPTION	PO NUMBER	GROSS	DISCOUNT	NET
288902NSAB4295A7			\$1,266.50	\$0.00	\$1,266.50
4763051		1800C2	\$3,666.40	\$0.00	\$3,666.40
4763052		1800D6	\$3,045.20	\$0.00	\$3,045.20
4763053		1800D2	\$3,496.40	\$0.00	\$3,496.40
4763054		1800G7	\$2,631.20	\$0.00	\$2,631.20
4767211		183FCB	\$534.00	\$0.00	\$534.00
Q19013107BOR1		16G688	\$250.00	\$0.00	\$250.00
Q1908250978		17WBL1	\$250.00	\$0.00	\$250.00
ENTERED SEP 03 2019					
TOTALS:			\$12,106.70	\$0.00	\$12,106.70

Detach at Perforation Before Detaching Check



Order No.: 4993366 Order Date: 04/23/2019 Customer: DOLGEN - JONESVILLE Customer PO No.: 17WBL1
DC

SHIP FROM: E & E COMPANY LTD 221 HANSON WAY WOODLAND, CA 95776	BILL TO: DOLLAR GENERAL CORPORATION 100 MISSION RIDGE GOODLETTSVILLE, TN 37072 US	SHIP TO: DOLGEN - JONESVILLE DC 1451 SPARTANBURG HWY JONESVILLE, SC 29353 US	Shipping Date: 05/10/2019
--	---	---	-------------------------------------

Cust. SKU No.	Item No.	UPC	Description	UOM	Case Pack Qty	Qty Ordered	Ctns Ordered	Qty Shipped	Ctns Shipped
10739005	DG18-038	676716390419	Q Polypropylene Mattress Pad	EA	8	168	21	168	21
18714101	DG21-131	088569017901	Std Microfiber Pillowcase	EA	12	156	13	156	13

Total Weight:	325.08
Total Quantity Ordered:	324
Total Cartons Ordered:	34
Total Quantity Shipped:	324
Total Cartons Shipped:	34

EEC shows cartons scanned, loaded and billed correct

Customer PO No.	E&E SO No.	Routing No.	Item No.	Item Description	Pallet ID	Carton No.	Carton ID	Ship To	Case Pack Qty	Status
17WBL1	4993366	R2019042507422210	DG16-038	Q Polypropylene Mattress Pad	00106757163001343221	0635587404	00006757166355874048	96910	8	Loaded
17WBL1	4993366	R2019042507422210	DG16-038	Q Polypropylene Mattress Pad	00106757163001343221	0635587405	00006757166355874055	96910	8	Loaded
17WBL1	4993366	R2019042507422210	DG16-038	Q Polypropylene Mattress Pad	00106757163001343221	0635587406	00006757166355874062	96910	8	Loaded
17WBL1	4993366	R2019042507422210	DG16-038	Q Polypropylene Mattress Pad	00106757163001343221	0635587407	00006757166355874079	96910	8	Loaded
17WBL1	4993366	R2019042507422210	DG16-038	Q Polypropylene Mattress Pad	00106757163001343221	0635587408	00006757166355874086	96910	8	Loaded
17WBL1	4993366	R2019042507422210	DG16-038	Q Polypropylene Mattress Pad	00106757163001343221	0635587409	00006757166355874093	96910	8	Loaded
17WBL1	4993366	R2019042507422210	DG16-038	Q Polypropylene Mattress Pad	00106757163001343221	0635587416	00006757166355874161	96910	8	Loaded
17WBL1	4993366	R2019042507422210	DG16-038	Q Polypropylene Mattress Pad	00106757163001343221	0635587417	00006757166355874178	96910	8	Loaded
17WBL1	4993366	R2019042507422210	DG16-038	Q Polypropylene Mattress Pad	00106757163001343221	0635587418	00006757166355874185	96910	8	Loaded
17WBL1	4993366	R2019042507422210	DG16-038	Q Polypropylene Mattress Pad	00106757163001343221	0635587419	00006757166355874192	96910	8	Loaded
17WBL1	4993366	R2019042507422210	DG16-038	Q Polypropylene Mattress Pad	00106757163001343221	0635587420	00006757166355874208	96910	8	Loaded
17WBL1	4993366	R2019042507422210	DG16-038	Q Polypropylene Mattress Pad	00106757163001343221	0635587421	00006757166355874215	96910	8	Loaded
17WBL1	4993366	R2019042507422210	DG16-038	Q Polypropylene Mattress Pad	00106757163001343221	0635587410	00006757166355874109	96910	8	Loaded
17WBL1	4993366	R2019042507422210	DG16-038	Q Polypropylene Mattress Pad	00106757163001343221	0635587411	00006757166355874116	96910	8	Loaded
17WBL1	4993366	R2019042507422210	DG16-038	Q Polypropylene Mattress Pad	00106757163001343221	0635587412	00006757166355874123	96910	8	Loaded
17WBL1	4993366	R2019042507422210	DG16-038	Q Polypropylene Mattress Pad	00106757163001343221	0635587413	00006757166355874130	96910	8	Loaded
17WBL1	4993366	R2019042507422210	DG16-038	Q Polypropylene Mattress Pad	00106757163001343221	0635587414	00006757166355874147	96910	8	Loaded
17WBL1	4993366	R2019042507422210	DG16-038	Q Polypropylene Mattress Pad	00106757163001343221	0635587415	00006757166355874154	96910	8	Loaded
17WBL1	4993366	R2019042507422210	DG16-038	Q Polypropylene Mattress Pad	00106757163001343221	0635587422	00006757166355874222	96910	8	Loaded
17WBL1	4993366	R2019042507422210	DG16-038	Q Polypropylene Mattress Pad	00106757163001343221	0635587423	00006757166355874239	96910	8	Loaded
17WBL1	4993366	R2019042507422210	DG16-038	Q Polypropylene Mattress Pad	00106757163001343245	0635587424	00006757166355874246	96910	8	Loaded
17WBL1	4993366	R2019042507422210	DG21-131	Std Microfiber Pillowcase	00106757163001343245	0635587425	00006757166355874259	96910	12	Loaded
17WBL1	4993366	R2019042507422210	DG21-131	Std Microfiber Pillowcase	00106757163001343245	0635587426	00006757166355874260	96910	12	Loaded
17WBL1	4993366	R2019042507422210	DG21-131	Std Microfiber Pillowcase	00106757163001343245	0635587427	00006757166355874277	96910	12	Loaded
17WBL1	4993366	R2019042507422210	DG21-131	Std Microfiber Pillowcase	00106757163001343245	0635587434	00006757166355874345	96910	12	Loaded
17WBL1	4993366	R2019042507422210	DG21-131	Std Microfiber Pillowcase	00106757163001343245	0635587435	00006757166355874352	96910	12	Loaded
17WBL1	4993366	R2019042507422210	DG21-131	Std Microfiber Pillowcase	00106757163001343245	0635587436	00006757166355874369	96910	12	Loaded
17WBL1	4993366	R2019042507422210	DG21-131	Std Microfiber Pillowcase	00106757163001343245	0635587437	00006757166355874376	96910	12	Loaded
17WBL1	4993366	R2019042507422210	DG21-131	Std Microfiber Pillowcase	00106757163001343245	0635587428	00006757166355874284	96910	12	Loaded
17WBL1	4993366	R2019042507422210	DG21-131	Std Microfiber Pillowcase	00106757163001343245	0635587429	00006757166355874291	96910	12	Loaded
17WBL1	4993366	R2019042507422210	DG21-131	Std Microfiber Pillowcase	00106757163001343245	0635587430	00006757166355874307	96910	12	Loaded
17WBL1	4993366	R2019042507422210	DG21-131	Std Microfiber Pillowcase	00106757163001343245	0635587431	00006757166355874314	96910	12	Loaded
17WBL1	4993366	R2019042507422210	DG21-131	Std Microfiber Pillowcase	00106757163001343245	0635587432	00006757166355874321	96910	12	Loaded
17WBL1	4993366	R2019042507422210	DG21-131	Std Microfiber Pillowcase	00106757163001343245	0635587433	00006757166355874338	96910	12	Loaded