



# SCANALYST 3 Report



Inspected Image

\*The Overall Grade Is The Average Of 10 Scan Profile Grades

|                                      |
|--------------------------------------|
| <b>Barcode Print Quality-Overall</b> |
| <b>Barcode Data Content</b>          |
| <b>Barcode Physical Detail</b>       |

|  |
|--|
| <b>0.0 (F)</b>   |
| 00006757167032991171<br>AI - 00 Title - SSCC Length - 20 |
| X Dim 0.018 Height 1.131 Width 2.832                     |

### Verification Report

Code Type: Code 128  
 Overall Symbol Grade: 0.0 (F)  
 Aperture: 4.416 px Relative Mode

### Scan reflectance profile #0 analysis

Scan reflectance profile grade 0.0 (F)

| Parameter          | Value   | Grade   |
|--------------------|---------|---------|
| Decode             | Yes     | 4.0 (A) |
| Rmax               | 0.8039  | N/A     |
| Rmin               | 0.0235  | 4.0 (A) |
| Global Threshold   | 0.7804  | N/A     |
| Symbol Contrast    | 0.7804  | 4.0 (A) |
| Min. edge contrast | 0.5529  | 4.0 (A) |
| Modulation         | 0.7085  | 4.0 (A) |
| Defects            | 0.0503  | 4.0 (A) |
| Decodability       | 0.8638  | 4.0 (A) |
| Quiet zone         | -0.8084 | 0.0 (F) |

Resources - Links are case sensitive

GS1 Specifications For SSCC Labels - 2018  
[www.gs1.org/docs/barcodes/GS1\\_General\\_Specifications.pdf](http://www.gs1.org/docs/barcodes/GS1_General_Specifications.pdf)

Laymans Guide to Barcode Verification  
[www.scanalyst.com/resources/LaymansGuidetoANSI\\_rev\\_2002.pdf](http://www.scanalyst.com/resources/LaymansGuidetoANSI_rev_2002.pdf)

Additional helpful information [www.Goodbarcodes.com](http://www.Goodbarcodes.com)

SCANALYST 3 inspection processes are based on current AIDC standards such as ISO ISO/IEC 15415, ISO/IEC 15416, ISO/IEC 15426-1, ISO/IEC 15426-2, ISO/IEC TR 29158 (AIM DPM) and GS1 General Specifications for multiple field data carriers.  
 Copyright Automatic Identification Systems, Inc. 1993-2018, a U.S.A. based veteran owned company [www.scanalyst.com](http://www.scanalyst.com)



Scan For Help





# SCANALYST 3 Report



Inspected Image

\*The Overall Grade Is The Average Of 10 Scan Profile Grades

|                                      |
|--------------------------------------|
| <b>Barcode Print Quality-Overall</b> |
| <b>Barcode Data Content</b>          |
| <b>Barcode Physical Detail</b>       |

|  |
|--|
| <b>1.0 (D)</b>   |
| 00006757167033100688<br>AI - 00 Title - SSCC Length - 20 |
| X Dim 0.018 Height 1.135 Width 2.788                     |

### Verification Report

Code Type: Code 128  
 Overall Symbol Grade: 1.0 (D)  
 Aperture: 4.346 px Relative Mode

### Scan reflectance profile #0 analysis

Scan reflectance profile grade 1.0 (D)

| Parameter          | Value  | Grade   |
|--------------------|--------|---------|
| Decode             | Yes    | 4.0 (A) |
| Rmax               | 0.8627 | N/A     |
| Rmin               | 0.0196 | 4.0 (A) |
| Global Threshold   | 0.8431 | N/A     |
| Symbol Contrast    | 0.8431 | 4.0 (A) |
| Min. edge contrast | 0.3608 | 4.0 (A) |
| Modulation         | 0.4279 | 1.0 (D) |
| Defects            | 0.0837 | 4.0 (A) |
| Decodability       | 0.6838 | 4.0 (A) |
| Quiet zone         | 1.2852 | 4.0 (A) |

Resources - Links are case sensitive

GS1 Specifications For SSCC Labels - 2018  
[www.gs1.org/docs/barcodes/GS1\\_General\\_Specifications.pdf](http://www.gs1.org/docs/barcodes/GS1_General_Specifications.pdf)

Laymans Guide to Barcode Verification  
[www.scanalyst.com/resources/LaymansGuidetoANSI\\_rev\\_2002.pdf](http://www.scanalyst.com/resources/LaymansGuidetoANSI_rev_2002.pdf)

Additional helpful information [www.Goodbarcodes.com](http://www.Goodbarcodes.com)

SCANALYST 3 inspection processes are based on current AIDC standards such as ISO ISO/IEC 15415, ISO/IEC 15416, ISO/IEC 15426-1, ISO/IEC 15426-2, ISO/IEC TR 29158 (AIM DPM) and GS1 General Specifications for multiple field data carriers.  
 Copyright Automatic Identification Systems, Inc. 1993-2018, a U.S.A. based veteran owned company [www.scanalyst.com](http://www.scanalyst.com)



Scan For Help





# SCANALYST 3 Report



Inspected Image

\*The Overall Grade Is The Average Of 10 Scan Profile Grades

|                                      |
|--------------------------------------|
| <b>Barcode Print Quality-Overall</b> |
| <b>Barcode Data Content</b>          |
| <b>Barcode Physical Detail</b>       |

|                                      |
|--------------------------------------|
| <b>0.0 (F)</b>                       |
| 00006757167033071650                 |
| AI - 00 Title - SSCC Length - 20     |
| X Dim 0.018 Height 1.123 Width 2.765 |

### Verification Report

Code Type: Code 128  
 Overall Symbol Grade: 0.0 (F)  
 Aperture: 4.310 px Relative Mode

### Scan reflectance profile #0 analysis

Scan reflectance profile grade 0.0 (F)

| Parameter          | Value   | Grade   |
|--------------------|---------|---------|
| Decode             | No      | 0.0 (F) |
| Rmax               | 0.7804  | N/A     |
| Rmin               | 0.0196  | 4.0 (A) |
| Global Threshold   | 0.7608  | N/A     |
| Symbol Contrast    | 0.7608  | 4.0 (A) |
| Min. edge contrast | 0.1529  | 4.0 (A) |
| Modulation         | 0.2010  | 0.0 (F) |
| Defects            | 0.4278  | 0.0 (F) |
| Decodability       | 0.0000  | 0.0 (F) |
| Quiet zone         | -0.2288 | 0.0 (F) |

Resources - Links are case sensitive

GS1 Specifications For SSCC Labels - 2018  
[www.gs1.org/docs/barcodes/GS1\\_General\\_Specifications.pdf](http://www.gs1.org/docs/barcodes/GS1_General_Specifications.pdf)

Laymans Guide to Barcode Verification  
[www.scanalyst.com/resources/LaymansGuidetoANSI\\_rev\\_2002.pdf](http://www.scanalyst.com/resources/LaymansGuidetoANSI_rev_2002.pdf)

Additional helpful information [www.Goodbarcodes.com](http://www.Goodbarcodes.com)

SCANALYST 3 inspection processes are based on current AIDC standards such as ISO ISO/IEC 15415, ISO/IEC 15416, ISO/IEC 15426-1, ISO/IEC 15426-2, ISO/IEC TR 29158 (AIM DPM) and GS1 General Specifications for multiple field data carriers.  
 Copyright Automatic Identification Systems, Inc. 1993-2018, a U.S.A. based veteran owned company [www.scanalyst.com](http://www.scanalyst.com)



Scan For Help





# SCANALYST 3 Report



Inspected Image

This barcode could not be read or verified. The SSCC barcode data had to be key entered

\*The Overall Grade Is The Average Of 10 Scan Profile Grades

|                                      |
|--------------------------------------|
| <b>Barcode Print Quality-Overall</b> |
| <b>Barcode Data Content</b>          |
| <b>Barcode Physical Detail</b>       |

|  |
|--|
| <b>Unreadable</b>  |
| 00006757167032986672   |
| Physical Details are not available when the SSCC is manually entered |

Scan Profile Details are not available when the SSCC is manually entered

Resources - Links are case sensitive

GS1 Specifications For SSCC Labels - 2018  
[www.gs1.org/docs/barcodes/GS1\\_General\\_Specifications.pdf](http://www.gs1.org/docs/barcodes/GS1_General_Specifications.pdf)

Laymans Guide to Barcode Verification  
[www.scanalyst.com/resources/LaymansGuidetoANSI\\_rev\\_2002.pdf](http://www.scanalyst.com/resources/LaymansGuidetoANSI_rev_2002.pdf)

Additional helpful information [www.Goodbarcodes.com](http://www.Goodbarcodes.com)

SCANALYST 3 inspection processes are based on current AIDC standards such as ISO ISO/IEC 15415, ISO/IEC 15416, ISO/IEC 15426-1, ISO/IEC 15426-2, ISO/IEC TR 29158 (AIM DPM) and GS1 General Specifications for multiple field data carriers.  
Copyright Automatic Identification Systems, Inc. 1993-2018, a U.S.A. based veteran owned company [www.scanalyst.com](http://www.scanalyst.com)



Scan For Help





# SCANALYST 3 Report



Inspected Image

This barcode could not be read or verified. The SSCC barcode data had to be key entered

\*The Overall Grade Is The Average Of 10 Scan Profile Grades

|                                      |
|--------------------------------------|
| <b>Barcode Print Quality-Overall</b> |
| <b>Barcode Data Content</b>          |
| <b>Barcode Physical Detail</b>       |

|  |
|--|
| <b>Unreadable</b>  |
| 00006757167033557734   |
| Physical Details are not available when the SSCC is manually entered |

Scan Profile Details are not available when the SSCC is manually entered

Resources - Links are case sensitive

GS1 Specifications For SSCC Labels - 2018  
[www.gs1.org/docs/barcodes/GS1\\_General\\_Specifications.pdf](http://www.gs1.org/docs/barcodes/GS1_General_Specifications.pdf)

Laymans Guide to Barcode Verification  
[www.scanalyst.com/resources/LaymansGuidetoANSI\\_rev\\_2002.pdf](http://www.scanalyst.com/resources/LaymansGuidetoANSI_rev_2002.pdf)

Additional helpful information [www.Goodbarcodes.com](http://www.Goodbarcodes.com)

SCANALYST 3 inspection processes are based on current AIDC standards such as ISO ISO/IEC 15415, ISO/IEC 15416, ISO/IEC 15426-1, ISO/IEC 15426-2, ISO/IEC TR 29158 (AIM DPM) and GS1 General Specifications for multiple field data carriers.  
Copyright Automatic Identification Systems, Inc. 1993-2018, a U.S.A. based veteran owned company [www.scanalyst.com](http://www.scanalyst.com)

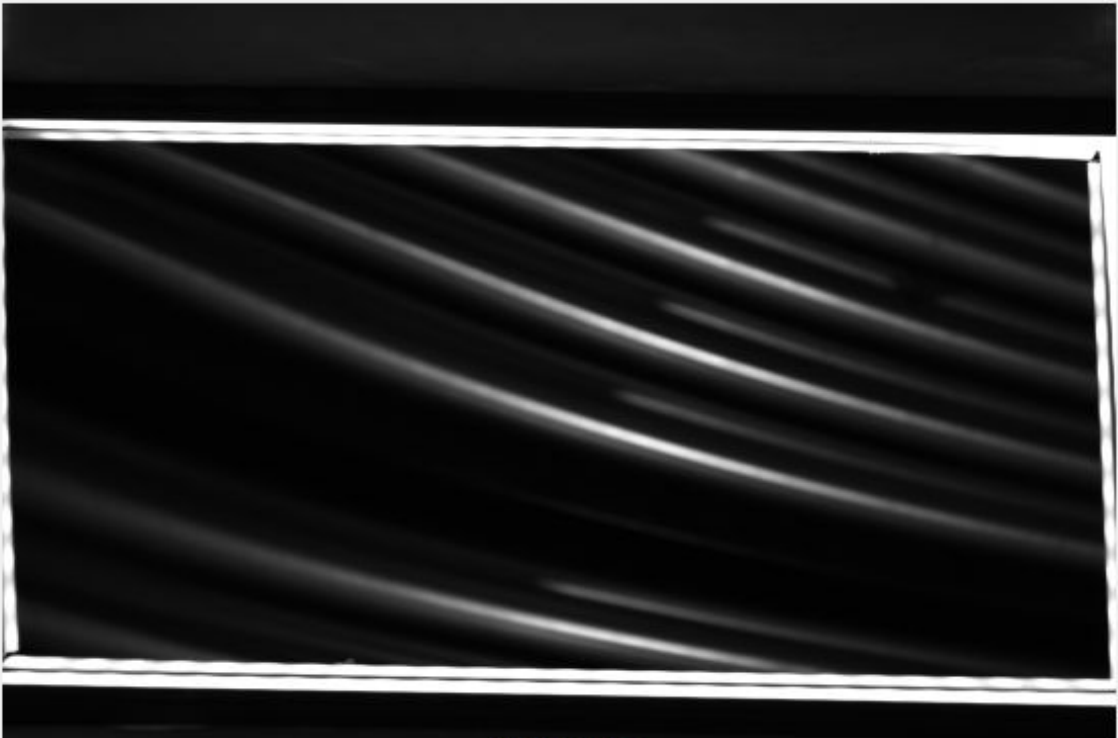


Scan For Help





# SCANALYST 3 Report



Inspected Image

This barcode could not be read or verified. The SSCC barcode data had to be key entered

\*The Overall Grade Is The Average Of 10 Scan Profile Grades

|                                      |
|--------------------------------------|
| <b>Barcode Print Quality-Overall</b> |
| <b>Barcode Data Content</b>          |
| <b>Barcode Physical Detail</b>       |

|  |
|--|
| <b>Unreadable</b>  |
| 00006757167033535879   |
| Physical Details are not available when the SSCC is manually entered |

Scan Profile Details are not available when the SSCC is manually entered

Resources - Links are case sensitive

GS1 Specifications For SSCC Labels - 2018  
[www.gs1.org/docs/barcodes/GS1\\_General\\_Specifications.pdf](http://www.gs1.org/docs/barcodes/GS1_General_Specifications.pdf)

Laymans Guide to Barcode Verification  
[www.scanalyst.com/resources/LaymansGuidetoANSI\\_rev\\_2002.pdf](http://www.scanalyst.com/resources/LaymansGuidetoANSI_rev_2002.pdf)

Additional helpful information [www.Goodbarcodes.com](http://www.Goodbarcodes.com)

SCANALYST 3 inspection processes are based on current AIDC standards such as ISO ISO/IEC 15415, ISO/IEC 15416, ISO/IEC 15426-1, ISO/IEC 15426-2, ISO/IEC TR 29158 (AIM DPM) and GS1 General Specifications for multiple field data carriers.  
Copyright Automatic Identification Systems, Inc. 1993-2018, a U.S.A. based veteran owned company [www.scanalyst.com](http://www.scanalyst.com)



[Scan For Help](#)





# SCANALYST 3 Report



Inspected Image

\*The Overall Grade Is The Average Of 10 Scan Profile Grades

|                                      |   |
|--------------------------------------|---|
| <b>Barcode Print Quality-Overall</b> | - |
| <b>Barcode Data Content</b>          | - |
| <b>Barcode Physical Detail</b>       | - |

Resources - Links are case sensitive

GS1 Specifications For SSCC Labels - 2018  
[www.gs1.org/docs/barcodes/GS1\\_General\\_Specifications.pdf](http://www.gs1.org/docs/barcodes/GS1_General_Specifications.pdf)

Laymans Guide to Barcode Verification  
[www.scanalyst.com/resources/LaymansGuidetoANSI\\_rev\\_2002.pdf](http://www.scanalyst.com/resources/LaymansGuidetoANSI_rev_2002.pdf)

Additional helpful information [www.Goodbarcodes.com](http://www.Goodbarcodes.com)

SCANALYST 3 inspection processes are based on current AIDC standards such as ISO ISO/IEC 15415, ISO/IEC 15416, ISO/IEC 15426-1, ISO/IEC 15426-2, ISO/IEC TR 29158 (AIM DPM) and GS1 General Specifications for multiple field data carriers.  
Copyright Automatic Identification Systems, Inc. 1993-2018, a U.S.A. based veteran owned company [www.scanalyst.com](http://www.scanalyst.com)



[Scan For Help](#)

