



SCANALYST 3 Report



Inspected Image

*The Overall Grade Is The Average Of 10 Scan Profile Grades

Barcode Print Quality-Overall
Barcode Data Content
Barcode Physical Detail

1.4 (D)
00006757167044288283 AI - 00 Title - SSCC Length - 20
X Dim 0.018 Height 1.092 Width 2.758

Verification Report

Code Type: Code 128
 Overall Symbol Grade: 1.4 (D)
 Aperture: 4.445 px Relative Mode

Scan reflectance profile #0 analysis

Scan reflectance profile grade 0.0 (F)

Parameter	Value	Grade
Decode	Yes	4.0 (A)
Rmax	1.0000	N/A
Rmin	0.0902	4.0 (A)
Global Threshold	0.9098	N/A
Symbol Contrast	0.9098	4.0 (A)
Min. edge contrast	0.4980	4.0 (A)
Modulation	0.5474	2.0 (C)
Defects	0.3147	0.0 (F)
Decodability	0.7437	4.0 (A)
Quiet zone	1.2966	4.0 (A)

Resources - Links are case sensitive

GS1 Specifications For SSCC Labels - 2018
www.gs1.org/docs/barcodes/GS1_General_Specifications.pdf

Laymans Guide to Barcode Verification
www.scanalyst.com/resources/LaymansGuidetoANSI_rev_2002.pdf

Additional helpful information www.Goodbarcodes.com

SCANALYST 3 inspection processes are based on current AIDC standards such as ISO ISO/IEC 15415, ISO/IEC 15416, ISO/IEC 15426-1, ISO/IEC 15426-2, ISO/IEC TR 29158 (AIM DPM) and GS1 General Specifications for multiple field data carriers.
 Copyright Automatic Identification Systems, Inc. 1993-2018, a U.S.A. based veteran owned company www.scanalyst.com



Scan For Help





SCANALYST 3 Report



Inspected Image

*The Overall Grade Is The Average Of 10 Scan Profile Grades

Barcode Print Quality-Overall
Barcode Data Content
Barcode Physical Detail

2.1 (C)
00006757167033051409
AI - 00 Title - SSCC Length - 20
X Dim 0.017 Height 1.049 Width 2.590

Verification Report

Code Type: Code 128
 Overall Symbol Grade: 2.1 (C)
 Aperture: 4.114 px Relative Mode

Scan reflectance profile #0 analysis

Scan reflectance profile grade 2.0 (C)

Parameter	Value	Grade
Decode	Yes	4.0 (A)
Rmax	0.8078	N/A
Rmin	0.0275	4.0 (A)
Global Threshold	0.7804	N/A
Symbol Contrast	0.7804	4.0 (A)
Min. edge contrast	0.5333	4.0 (A)
Modulation	0.6834	3.0 (B)
Defects	0.0402	4.0 (A)
Decodability	0.4295	2.0 (C)
Quiet zone	-1.1877	4.0 (A)

Resources - Links are case sensitive

GS1 Specifications For SSCC Labels - 2018
www.gs1.org/docs/barcodes/GS1_General_Specifications.pdf

Laymans Guide to Barcode Verification
www.scanalyst.com/resources/LaymansGuidetoANSI_rev_2002.pdf

Additional helpful information www.Goodbarcodes.com

SCANALYST 3 inspection processes are based on current AIDC standards such as ISO ISO/IEC 15415, ISO/IEC 15416, ISO/IEC 15426-1, ISO/IEC 15426-2, ISO/IEC TR 29158 (AIM DPM) and GS1 General Specifications for multiple field data carriers.
 Copyright Automatic Identification Systems, Inc. 1993-2018, a U.S.A. based veteran owned company www.scanalyst.com

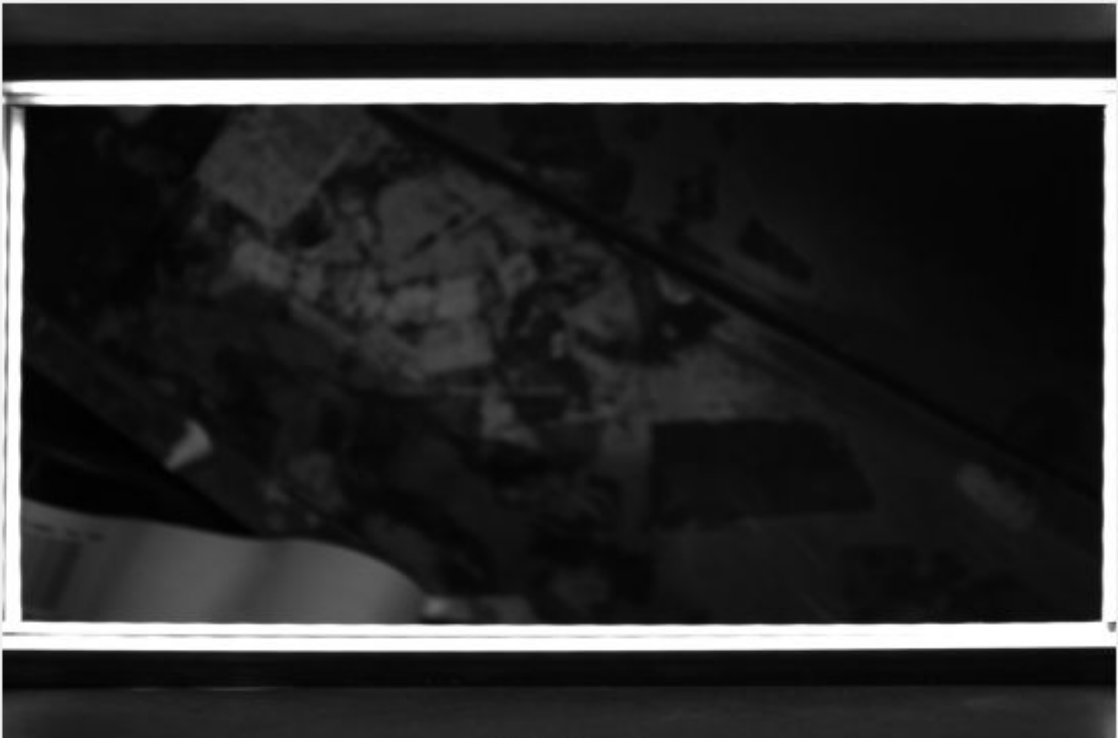


Scan For Help





SCANALYST 3 Report



Inspected Image

This barcode could not be read or verified. The SSCC barcode data had to be key entered

*The Overall Grade Is The Average Of 10 Scan Profile Grades

Barcode Print Quality-Overall
Barcode Data Content
Barcode Physical Detail

Unreadable
00006757167045364788
Physical Details are not available when the SSCC is manually entered

Scan Profile Details are not available when the SSCC is manually entered

Resources - Links are case sensitive

GS1 Specifications For SSCC Labels - 2018
www.gs1.org/docs/barcodes/GS1_General_Specifications.pdf

Laymans Guide to Barcode Verification
www.scanalyst.com/resources/LaymansGuidetoANSI_rev_2002.pdf

Additional helpful information www.Goodbarcodes.com

SCANALYST 3 inspection processes are based on current AIDC standards such as ISO ISO/IEC 15415, ISO/IEC 15416, ISO/IEC 15426-1, ISO/IEC 15426-2, ISO/IEC TR 29158 (AIM DPM) and GS1 General Specifications for multiple field data carriers.
Copyright Automatic Identification Systems, Inc. 1993-2018, a U.S.A. based veteran owned company www.scanalyst.com



[Scan For Help](#)





SCANALYST 3 Report



Inspected Image

The barcode height is supposed to be 1.25 in. high. This barcode is out of spec which impacts the ability to scan it and handle the package automatically.

*The Overall Grade Is The Average Of 10 Scan Profile Grades

Barcode Print Quality-Overall

0.2 (F)

Barcode Data Content

00006757167045366003
AI - 00 Title - SSCC Length - 20

Barcode Physical Detail

X Dim 0.018 Height 0.546 Width 2.755

Verification Report

Code Type: Code 128
Overall Symbol Grade: 0.2 (F)
Aperture: 4.301 px Relative Mode

Scan reflectance profile #0 analysis

Scan reflectance profile grade 0.0 (F)

Parameter	Value	Grade
Decode	No	0.0 (F)
Rmax	1.0000	N/A
Rmin	0.1843	4.0 (A)
Global Threshold	0.8157	N/A
Symbol Contrast	0.8157	4.0 (A)
Min. edge contrast	0.0863	0.0 (F)
Modulation	0.1058	0.0 (F)
Defects	0.4519	0.0 (F)
Decodability	0.0000	0.0 (F)
Quiet zone	-1.0370	4.0 (A)

Resources - Links are case sensitive

GS1 Specifications For SSCC Labels - 2018
www.gs1.org/docs/barcodes/GS1_General_Specifications.pdf

Laymans Guide to Barcode Verification
www.scanalyst.com/resources/LaymansGuidetoANSI_rev_2002.pdf

Additional helpful information www.Goodbarcodes.com

SCANALYST 3 inspection processes are based on current AIDC standards such as ISO ISO/IEC 15415, ISO/IEC 15416, ISO/IEC 15426-1, ISO/IEC 15426-2, ISO/IEC TR 29158 (AIM DPM) and GS1 General Specifications for multiple field data carriers.
Copyright Automatic Identification Systems, Inc. 1993-2018, a U.S.A. based veteran owned company www.scanalyst.com



Scan For Help





SCANALYST 3 Report



Inspected Image

The barcode height is supposed to be 1.25 in. high. This barcode is out of spec which impacts the ability to scan it and handle the package automatically.

*The Overall Grade Is The Average Of 10 Scan Profile Grades

Barcode Print Quality-Overall
Barcode Data Content
Barcode Physical Detail

1.1 (D)
00006757167045396758
AI - 00 Title - SSCC Length - 20
X Dim 0.017 Height 0.624 Width 2.695

Verification Report

Code Type: Code 128
 Overall Symbol Grade: 1.1 (D)
 Aperture: 4.208 px Relative Mode

Scan reflectance profile #0 analysis

Scan reflectance profile grade 3.0 (B)

Parameter	Value	Grade
Decode	Yes	4.0 (A)
Rmax	1.0000	N/A
Rmin	0.0863	4.0 (A)
Global Threshold	0.9137	N/A
Symbol Contrast	0.9137	4.0 (A)
Min. edge contrast	0.6549	4.0 (A)
Modulation	0.7167	4.0 (A)
Defects	0.1030	4.0 (A)
Decodability	0.6070	3.0 (B)
Quiet zone	1.2893	4.0 (A)

Resources - Links are case sensitive

GS1 Specifications For SSCC Labels - 2018
www.gs1.org/docs/barcodes/GS1_General_Specifications.pdf

Laymans Guide to Barcode Verification
www.scanalyst.com/resources/LaymansGuidetoANSI_rev_2002.pdf

Additional helpful information www.Goodbarcodes.com

SCANALYST 3 inspection processes are based on current AIDC standards such as ISO ISO/IEC 15415, ISO/IEC 15416, ISO/IEC 15426-1, ISO/IEC 15426-2, ISO/IEC TR 29158 (AIM DPM) and GS1 General Specifications for multiple field data carriers.
 Copyright Automatic Identification Systems, Inc. 1993-2018, a U.S.A. based veteran owned company www.scanalyst.com



Scan For Help





SCANALYST 3 Report



Inspected Image

*The Overall Grade Is The Average Of 10 Scan Profile Grades

Barcode Print Quality-Overall
Barcode Data Content
Barcode Physical Detail

1.1 (D)
00006757167044231234
AI - 00 Title - SSCC Length - 20
X Dim 0.018 Height 1.104 Width 2.794

Verification Report

Code Type: Code 128
 Overall Symbol Grade: 1.1 (D)
 Aperture: 4.365 px Relative Mode

Scan reflectance profile #0 analysis

Scan reflectance profile grade 4.0 (A)

Parameter	Value	Grade
Decode	Yes	4.0 (A)
Rmax	1.0000	N/A
Rmin	0.0627	4.0 (A)
Global Threshold	0.9373	N/A
Symbol Contrast	0.9373	4.0 (A)
Min. edge contrast	0.7961	4.0 (A)
Modulation	0.8494	4.0 (A)
Defects	0.0377	4.0 (A)
Decodability	0.9342	4.0 (A)
Quiet zone	-1.3098	4.0 (A)

Resources - Links are case sensitive

GS1 Specifications For SSCC Labels - 2018
www.gs1.org/docs/barcodes/GS1_General_Specifications.pdf

Laymans Guide to Barcode Verification
www.scanalyst.com/resources/LaymansGuidetoANSI_rev_2002.pdf

Additional helpful information www.Goodbarcodes.com

SCANALYST 3 inspection processes are based on current AIDC standards such as ISO ISO/IEC 15415, ISO/IEC 15416, ISO/IEC 15426-1, ISO/IEC 15426-2, ISO/IEC TR 29158 (AIM DPM) and GS1 General Specifications for multiple field data carriers.
 Copyright Automatic Identification Systems, Inc. 1993-2018, a U.S.A. based veteran owned company www.scanalyst.com

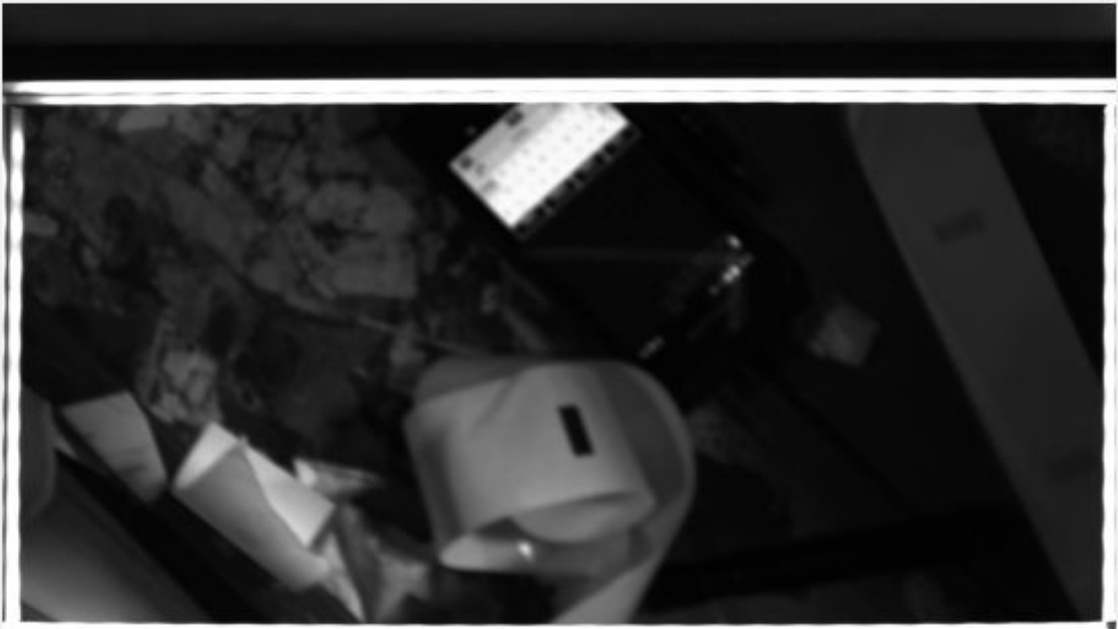


Scan For Help





SCANALYST 3 Report



Inspected Image

This barcode could not be read or verified. The SSCC barcode data had to be key entered

*The Overall Grade Is The Average Of 10 Scan Profile Grades

Barcode Print Quality-Overall
Barcode Data Content
Barcode Physical Detail

Unreadable
00006757167045386766
Physical Details are not available when the SSCC is manually entered

Scan Profile Details are not available when the SSCC is manually entered

Resources - Links are case sensitive

GS1 Specifications For SSCC Labels - 2018
www.gs1.org/docs/barcodes/GS1_General_Specifications.pdf

Laymans Guide to Barcode Verification
www.scanalyst.com/resources/LaymansGuidetoANSI_rev_2002.pdf

Additional helpful information www.Goodbarcodes.com

SCANALYST 3 inspection processes are based on current AIDC standards such as ISO ISO/IEC 15415, ISO/IEC 15416, ISO/IEC 15426-1, ISO/IEC 15426-2, ISO/IEC TR 29158 (AIM DPM) and GS1 General Specifications for multiple field data carriers.
Copyright Automatic Identification Systems, Inc. 1993-2018, a U.S.A. based veteran owned company www.scanalyst.com



[Scan For Help](#)





SCANALYST 3 Report



Inspected Image

*The Overall Grade Is The Average Of 10 Scan Profile Grades

Barcode Print Quality-Overall
Barcode Data Content
Barcode Physical Detail

0.0 (F)
00006757167045388135 AI - 00 Title - SSCC Length - 20
X Dim 0.018 Height 1.133 Width 2.848

Verification Report

Code Type: Code 128
 Overall Symbol Grade: 0.0 (F)
 Aperture: 4.417 px Relative Mode

Scan reflectance profile #0 analysis

Scan reflectance profile grade 0.0 (F)

Parameter	Value	Grade
Decode	Yes	4.0 (A)
Rmax	1.0000	N/A
Rmin	0.0392	4.0 (A)
Global Threshold	0.9608	N/A
Symbol Contrast	0.9608	4.0 (A)
Min. edge contrast	0.5608	4.0 (A)
Modulation	0.5837	2.0 (C)
Defects	0.4449	0.0 (F)
Decodability	0.7979	4.0 (A)
Quiet zone	-1.2823	4.0 (A)

Resources - Links are case sensitive

GS1 Specifications For SSCC Labels - 2018
www.gs1.org/docs/barcodes/GS1_General_Specifications.pdf

Laymans Guide to Barcode Verification
www.scanalyst.com/resources/LaymansGuidetoANSI_rev_2002.pdf

Additional helpful information www.Goodbarcodes.com

SCANALYST 3 inspection processes are based on current AIDC standards such as ISO ISO/IEC 15415, ISO/IEC 15416, ISO/IEC 15426-1, ISO/IEC 15426-2, ISO/IEC TR 29158 (AIM DPM) and GS1 General Specifications for multiple field data carriers.
 Copyright Automatic Identification Systems, Inc. 1993-2018, a U.S.A. based veteran owned company www.scanalyst.com



Scan For Help





SCANALYST 3 Report



Inspected Image

*The Overall Grade Is The Average Of 10 Scan Profile Grades

Barcode Print Quality-Overall
Barcode Data Content
Barcode Physical Detail

1.3 (D)
00006757167044227770 AI - 00 Title - SSCC Length - 20
X Dim 0.018 Height 1.137 Width 2.863

Verification Report

Code Type: Code 128
 Overall Symbol Grade: 1.3 (D)
 Aperture: 4.440 px Relative Mode

Scan reflectance profile #0 analysis

Scan reflectance profile grade 0.0 (F)

Parameter	Value	Grade
Decode	No	0.0 (F)
Rmax	0.9961	N/A
Rmin	0.0275	4.0 (A)
Global Threshold	0.9686	N/A
Symbol Contrast	0.9686	4.0 (A)
Min. edge contrast	0.0510	0.0 (F)
Modulation	0.0526	0.0 (F)
Defects	0.4008	0.0 (F)
Decodability	0.0000	0.0 (F)
Quiet zone	-0.1142	0.0 (F)

Resources - Links are case sensitive

GS1 Specifications For SSCC Labels - 2018
www.gs1.org/docs/barcodes/GS1_General_Specifications.pdf

Laymans Guide to Barcode Verification
www.scanalyst.com/resources/LaymansGuidetoANSI_rev_2002.pdf

Additional helpful information www.Goodbarcodes.com

SCANALYST 3 inspection processes are based on current AIDC standards such as ISO ISO/IEC 15415, ISO/IEC 15416, ISO/IEC 15426-1, ISO/IEC 15426-2, ISO/IEC TR 29158 (AIM DPM) and GS1 General Specifications for multiple field data carriers.
 Copyright Automatic Identification Systems, Inc. 1993-2018, a U.S.A. based veteran owned company www.scanalyst.com



Scan For Help





SCANALYST 3 Report



Inspected Image

*The Overall Grade Is The Average Of 10 Scan Profile Grades

Barcode Print Quality-Overall
Barcode Data Content
Barcode Physical Detail

1.0 (D)
00006757167045369288
AI - 00 Title - SSCC Length - 20
X Dim 0.017 Height 1.075 Width 2.680

Verification Report

Code Type: Code 128
 Overall Symbol Grade: 1.0 (D)
 Aperture: 4.259 px Relative Mode

Scan reflectance profile #0 analysis

Scan reflectance profile grade 1.0 (D)

Parameter	Value	Grade
Decode	Yes	4.0 (A)
Rmax	1.0000	N/A
Rmin	0.0431	4.0 (A)
Global Threshold	0.9569	N/A
Symbol Contrast	0.9569	4.0 (A)
Min. edge contrast	0.6039	4.0 (A)
Modulation	0.6311	3.0 (B)
Defects	0.0123	4.0 (A)
Decodability	0.2739	1.0 (D)
Quiet zone	-1.2921	4.0 (A)

Resources - Links are case sensitive

GS1 Specifications For SSCC Labels - 2018
www.gs1.org/docs/barcodes/GS1_General_Specifications.pdf

Laymans Guide to Barcode Verification
www.scanalyst.com/resources/LaymansGuidetoANSI_rev_2002.pdf

Additional helpful information www.Goodbarcodes.com

SCANALYST 3 inspection processes are based on current AIDC standards such as ISO ISO/IEC 15415, ISO/IEC 15416, ISO/IEC 15426-1, ISO/IEC 15426-2, ISO/IEC TR 29158 (AIM DPM) and GS1 General Specifications for multiple field data carriers.
 Copyright Automatic Identification Systems, Inc. 1993-2018, a U.S.A. based veteran owned company www.scanalyst.com



Scan For Help





SCANALYST 3 Report



Inspected Image

The barcode height is supposed to be 1.25 in. high. This barcode is out of spec which impacts the ability to scan it and handle the package automatically.

*The Overall Grade Is The Average Of 10 Scan Profile Grades

Barcode Print Quality-Overall
Barcode Data Content
Barcode Physical Detail

0.0 (F)
00006757167038024323
AI - 00 Title - SSCC Length - 20
X Dim 0.017 Height 0.820 Width 2.725

Verification Report

Code Type: Code 128
 Overall Symbol Grade: 0.0 (F)
 Aperture: 4.235 px Relative Mode

Scan reflectance profile #0 analysis

Scan reflectance profile grade 0.0 (F)

Parameter	Value	Grade
Decode	No	0.0 (F)
Rmax	0.9137	N/A
Rmin	0.0275	4.0 (A)
Global Threshold	0.8863	N/A
Symbol Contrast	0.8863	4.0 (A)
Min. edge contrast	0.3882	4.0 (A)
Modulation	0.4381	1.0 (D)
Defects	0.5000	0.0 (F)
Decodability	0.0086	0.0 (F)
Quiet zone	1.2136	4.0 (A)

Resources - Links are case sensitive

GS1 Specifications For SSCC Labels - 2018
www.gs1.org/docs/barcodes/GS1_General_Specifications.pdf

Laymans Guide to Barcode Verification
www.scanalyst.com/resources/LaymansGuidetoANSI_rev_2002.pdf

Additional helpful information www.Goodbarcodes.com

SCANALYST 3 inspection processes are based on current AIDC standards such as ISO ISO/IEC 15415, ISO/IEC 15416, ISO/IEC 15426-1, ISO/IEC 15426-2, ISO/IEC TR 29158 (AIM DPM) and GS1 General Specifications for multiple field data carriers.
 Copyright Automatic Identification Systems, Inc. 1993-2018, a U.S.A. based veteran owned company www.scanalyst.com



Scan For Help





SCANALYST 3 Report



Inspected Image

*The Overall Grade Is The Average Of 10 Scan Profile Grades

- Barcode Print Quality-Overall**
- Barcode Data Content**
- Barcode Physical Detail**

1.8 (C)		
00006757167038031093		
AI - 00	Title - SSCC	Length - 20
X Dim	Height	Width
0.018	1.146	2.826

Verification Report

Code Type: Code 128
 Overall Symbol Grade: 1.8 (C)
 Aperture: 4.395 px Relative Mode

Scan reflectance profile #0 analysis

Scan reflectance profile grade 2.0 (C)

Parameter	Value	Grade
Decode	Yes	4.0 (A)
Rmax	0.7137	N/A
Rmin	0.0235	4.0 (A)
Global Threshold	0.6902	N/A
Symbol Contrast	0.6902	3.0 (B)
Min. edge contrast	0.3686	4.0 (A)
Modulation	0.5341	2.0 (C)
Defects	0.0455	4.0 (A)
Decodability	0.7415	4.0 (A)
Quiet zone	1.3352	4.0 (A)

Resources - Links are case sensitive

GS1 Specifications For SSCC Labels - 2018
www.gs1.org/docs/barcodes/GS1_General_Specifications.pdf

Laymans Guide to Barcode Verification
www.scanalyst.com/resources/LaymansGuidetoANSI_rev_2002.pdf

Additional helpful information www.Goodbarcodes.com

SCANALYST 3 inspection processes are based on current AIDC standards such as ISO ISO/IEC 15415, ISO/IEC 15416, ISO/IEC 15426-1, ISO/IEC 15426-2, ISO/IEC TR 29158 (AIM DPM) and GS1 General Specifications for multiple field data carriers.
 Copyright Automatic Identification Systems, Inc. 1993-2018, a U.S.A. based veteran owned company www.scanalyst.com



Scan For Help





SCANALYST 3 Report



Inspected Image

This barcode could not be read or verified. The SSCC barcode data had to be key entered

*The Overall Grade Is The Average Of 10 Scan Profile Grades

Barcode Print Quality-Overall
Barcode Data Content
Barcode Physical Detail

Unreadable
00006757167038027737
Physical Details are not available when the SSCC is manually entered

Scan Profile Details are not available when the SSCC is manually entered

Resources - Links are case sensitive

GS1 Specifications For SSCC Labels - 2018
www.gs1.org/docs/barcodes/GS1_General_Specifications.pdf

Laymans Guide to Barcode Verification
www.scanalyst.com/resources/LaymansGuidetoANSI_rev_2002.pdf

Additional helpful information www.Goodbarcodes.com

SCANALYST 3 inspection processes are based on current AIDC standards such as ISO ISO/IEC 15415, ISO/IEC 15416, ISO/IEC 15426-1, ISO/IEC 15426-2, ISO/IEC TR 29158 (AIM DPM) and GS1 General Specifications for multiple field data carriers.
Copyright Automatic Identification Systems, Inc. 1993-2018, a U.S.A. based veteran owned company www.scanalyst.com

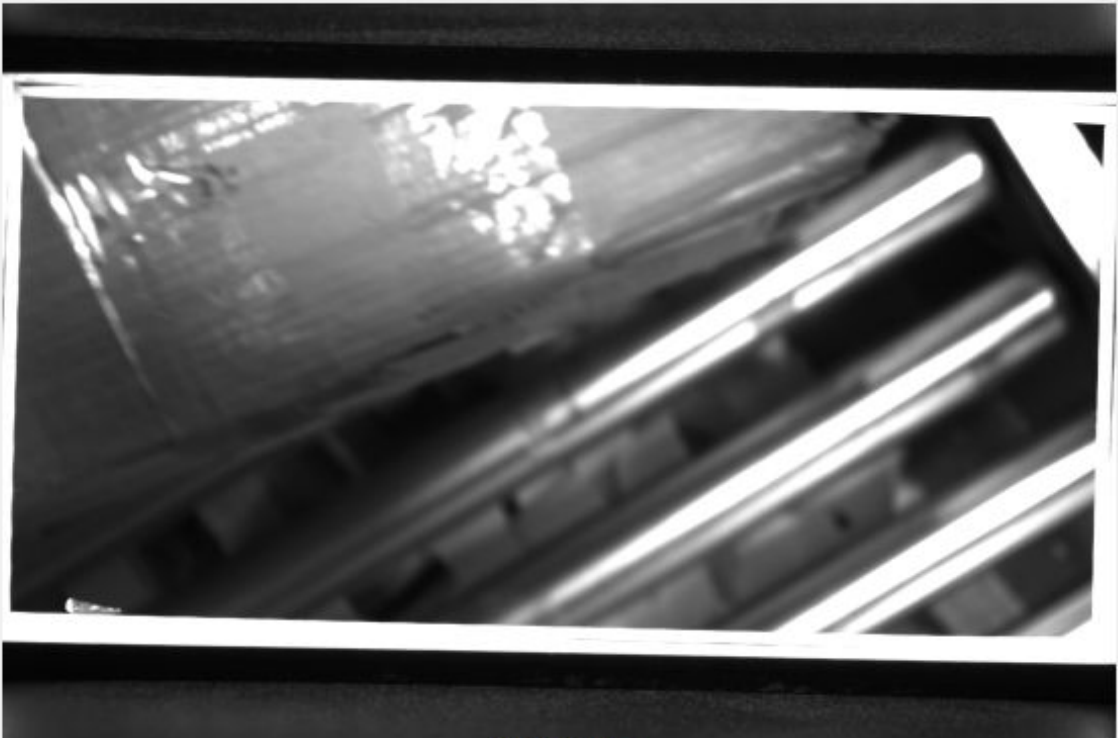


[Scan For Help](#)





SCANALYST 3 Report



Inspected Image

This barcode could not be read or verified. The SSCC barcode data had to be key entered

*The Overall Grade Is The Average Of 10 Scan Profile Grades

Barcode Print Quality-Overall
Barcode Data Content
Barcode Physical Detail

Unreadable
00006757167032963758
Physical Details are not available when the SSCC is manually entered

Scan Profile Details are not available when the SSCC is manually entered

Resources - Links are case sensitive

GS1 Specifications For SSCC Labels - 2018
www.gs1.org/docs/barcodes/GS1_General_Specifications.pdf

Laymans Guide to Barcode Verification
www.scanalyst.com/resources/LaymansGuidetoANSI_rev_2002.pdf

Additional helpful information www.Goodbarcodes.com

SCANALYST 3 inspection processes are based on current AIDC standards such as ISO ISO/IEC 15415, ISO/IEC 15416, ISO/IEC 15426-1, ISO/IEC 15426-2, ISO/IEC TR 29158 (AIM DPM) and GS1 General Specifications for multiple field data carriers.
Copyright Automatic Identification Systems, Inc. 1993-2018, a U.S.A. based veteran owned company www.scanalyst.com



[Scan For Help](#)

