

# SCANALYST 3 Report



Inspected Image

\*The Overall Grade Is The Average Of 10 Scan Profile Grades

<b>Barcode Print Quality-Overall</b>
<b>Barcode Data Content</b>
<b>Barcode Physical Detail</b>

<b>0.7 (D)</b>
00006757167032988515 AI - 00 Title - SSCC Length - 20
X Dim 0.018 Height 1.103 Width 2.842

### Verification Report

Code Type: Code 128  
 Overall Symbol Grade: 0.7 (D)  
 Aperture: 4.420 px Relative Mode

Scan reflectance profile #0 analysis

Scan reflectance profile grade 0.0 (F)

Parameter	Value	Grade
Decode	Yes	4.0 (A)
Rmax	0.8000	N/A
Rmin	0.0235	4.0 (A)
Global Threshold	0.7765	N/A
Symbol Contrast	0.7765	4.0 (A)
Min. edge contrast	0.4039	4.0 (A)
Modulation	0.5202	2.0 (C)
Defects	0.1010	4.0 (A)
Decodability	0.7365	4.0 (A)
Quiet zone	-0.6959	0.0 (F)

Resources - Links are case sensitive

GS1 Specifications For SSCC Labels - 2018  
[www.gs1.org/docs/barcodes/GS1\\_General\\_Specifications.pdf](http://www.gs1.org/docs/barcodes/GS1_General_Specifications.pdf)

Laymans Guide to Barcode Verification  
[www.scanalyst.com/resources/LaymansGuidetoANSI\\_rev\\_2002.pdf](http://www.scanalyst.com/resources/LaymansGuidetoANSI_rev_2002.pdf)

Additional helpful information [www.Goodbarcodes.com](http://www.Goodbarcodes.com)

SCANALYST 3 inspection processes are based on current AIDC standards such as ISO ISO/IEC 15415, ISO/IEC 15416, ISO/IEC 15426-1, ISO/IEC 15426-2, ISO/IEC TR 29158 (AIM DPM) and GS1 General Specifications for multiple field data carriers.  
 Copyright Automatic Identification Systems, Inc. 1993-2018, a U.S.A. based veteran owned company [www.scanalyst.com](http://www.scanalyst.com)



Scan For Help





# SCANALYST 3 Report



Inspected Image

This barcode could not be read or verified. The SSCC barcode data had to be key entered

\*The Overall Grade Is The Average Of 10 Scan Profile Grades

<b>Barcode Print Quality-Overall</b>
<b>Barcode Data Content</b>
<b>Barcode Physical Detail</b>

<b>Unreadable</b>
00006757167033602519
Physical Details are not available when the SSCC is manually entered

Scan Profile Details are not available when the SSCC is manually entered

Resources - Links are case sensitive

GS1 Specifications For SSCC Labels - 2018  
[www.gs1.org/docs/barcodes/GS1\\_General\\_Specifications.pdf](http://www.gs1.org/docs/barcodes/GS1_General_Specifications.pdf)

Laymans Guide to Barcode Verification  
[www.scanalyst.com/resources/LaymansGuidetoANSI\\_rev\\_2002.pdf](http://www.scanalyst.com/resources/LaymansGuidetoANSI_rev_2002.pdf)

Additional helpful information [www.Goodbarcodes.com](http://www.Goodbarcodes.com)

SCANALYST 3 inspection processes are based on current AIDC standards such as ISO ISO/IEC 15415, ISO/IEC 15416, ISO/IEC 15426-1, ISO/IEC 15426-2, ISO/IEC TR 29158 (AIM DPM) and GS1 General Specifications for multiple field data carriers.  
Copyright Automatic Identification Systems, Inc. 1993-2018, a U.S.A. based veteran owned company [www.scanalyst.com](http://www.scanalyst.com)

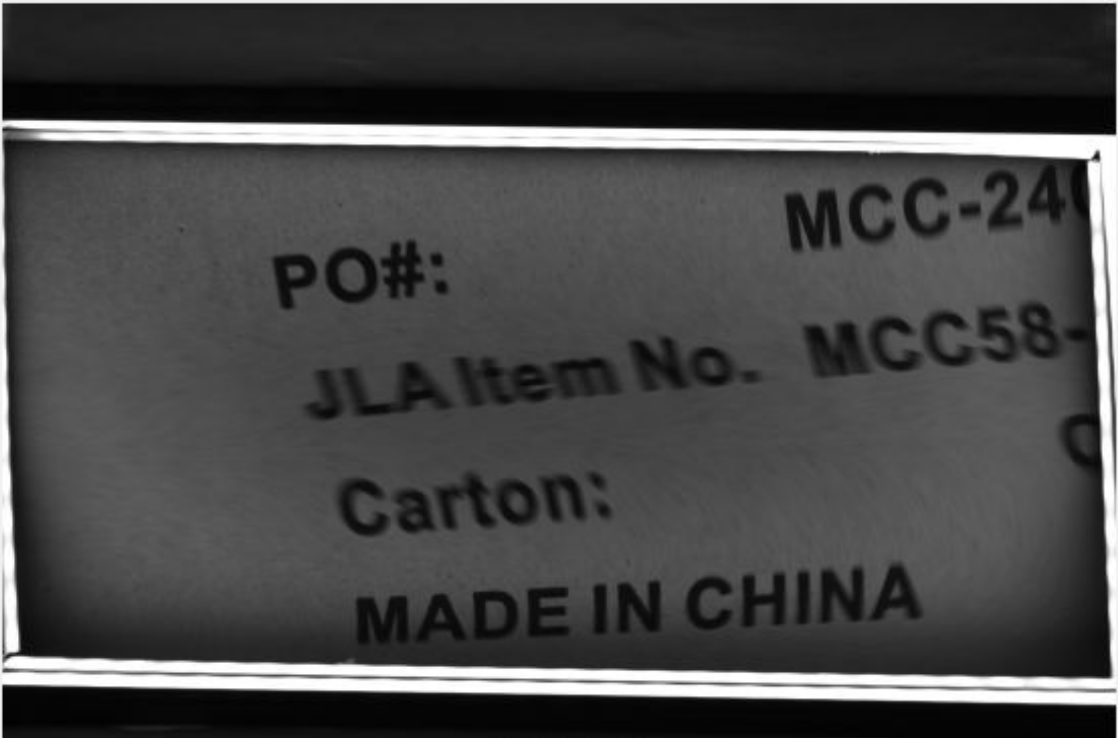


Scan For Help





# SCANALYST 3 Report



Inspected Image

This barcode could not be read or verified. The SSCC barcode data had to be key entered

\*The Overall Grade Is The Average Of 10 Scan Profile Grades

<b>Barcode Print Quality-Overall</b>
<b>Barcode Data Content</b>
<b>Barcode Physical Detail</b>

<b>Unreadable</b>
00006757167033569805
Physical Details are not available when the SSCC is manually entered

Scan Profile Details are not available when the SSCC is manually entered

Resources - Links are case sensitive

- GS1 Specifications For SSCC Labels - 2018  
[www.gs1.org/docs/barcodes/GS1\\_General\\_Specifications.pdf](http://www.gs1.org/docs/barcodes/GS1_General_Specifications.pdf)
- Laymans Guide to Barcode Verification  
[www.scanalyst.com/resources/LaymansGuidetoANSI\\_rev\\_2002.pdf](http://www.scanalyst.com/resources/LaymansGuidetoANSI_rev_2002.pdf)
- Additional helpful information [www.Goodbarcodes.com](http://www.Goodbarcodes.com)

SCANALYST 3 inspection processes are based on current AIDC standards such as ISO ISO/IEC 15415, ISO/IEC 15416, ISO/IEC 15426-1, ISO/IEC 15426-2, ISO/IEC TR 29158 (AIM DPM) and GS1 General Specifications for multiple field data carriers.  
 Copyright Automatic Identification Systems, Inc. 1993-2018, a U.S.A. based veteran owned company [www.scanalyst.com](http://www.scanalyst.com)



Scan For Help



**FROM:**  
E & E COMPANY, LTD  
2161 PuDong S. Road

Shanghai, SH 200127

**TO: Macy's**  
Macys Home Store Goodyear DC  
16575 West Commerce Drive

Goodyear, AZ 85338

**SHIP TO POSTAL CODE**  
(420)

85338



**CARRIER:**

**PRO:**

**B/L NUMBER:**

**PO: 1935092**

7165872

**QTY: 3**

MCH10 - 1564

**DEPT: 0606**

**CARTON # 94 of 187**

**HOME TEXTILES**

**FOR Macy's**

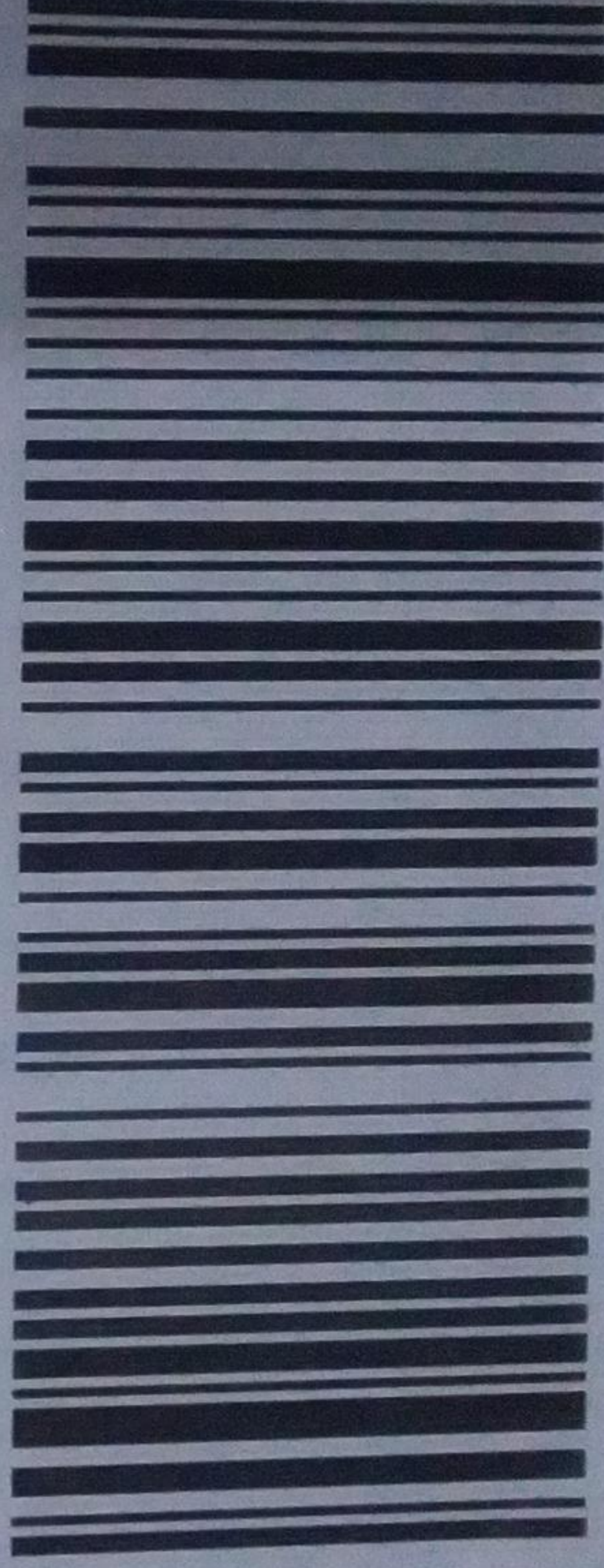
**ST#: 0858**

**Macys Home Store CFC Goodyear PS**

16575 West Commerce Lane  
Goodyear AZ 85338 US

**SERIAL SHIPPING CONTAINER**

**(00) 0 0 675716 702115108 1**





# SCANALYST 3 Report



Inspected Image

\*The Overall Grade Is The Average Of 10 Scan Profile Grades

<b>Barcode Print Quality-Overall</b>
<b>Barcode Data Content</b>
<b>Barcode Physical Detail</b>

<b>0.0 (F)</b>
00006757167033595804
AI - 00 Title - SSCC Length - 20
X Dim 0.018 Height 1.129 Width 2.854

### Verification Report

Code Type: Code 128  
 Overall Symbol Grade: 0.0 (F)  
 Aperture: 4.439 px Relative Mode

Scan reflectance profile #0 analysis

Scan reflectance profile grade 0.0 (F)

Parameter	Value	Grade
Decode	No	0.0 (F)
Rmax	1.0000	N/A
Rmin	0.0235	4.0 (A)
Global Threshold	0.9765	N/A
Symbol Contrast	0.9765	4.0 (A)
Min. edge contrast	0.3608	4.0 (A)
Modulation	0.3695	0.0 (F)
Defects	0.4940	0.0 (F)
Decodability	0.0271	0.0 (F)
Quiet zone	0.0207	0.0 (F)

Resources - Links are case sensitive

GS1 Specifications For SSCC Labels - 2018  
[www.gs1.org/docs/barcodes/GS1\\_General\\_Specifications.pdf](http://www.gs1.org/docs/barcodes/GS1_General_Specifications.pdf)

Laymans Guide to Barcode Verification  
[www.scanalyst.com/resources/LaymansGuidetoANSI\\_rev\\_2002.pdf](http://www.scanalyst.com/resources/LaymansGuidetoANSI_rev_2002.pdf)

Additional helpful information [www.Goodbarcodes.com](http://www.Goodbarcodes.com)

SCANALYST 3 inspection processes are based on current AIDC standards such as ISO ISO/IEC 15415, ISO/IEC 15416, ISO/IEC 15426-1, ISO/IEC 15426-2, ISO/IEC TR 29158 (AIM DPM) and GS1 General Specifications for multiple field data carriers.  
 Copyright Automatic Identification Systems, Inc. 1993-2018, a U.S.A. based veteran owned company [www.scanalyst.com](http://www.scanalyst.com)



Scan For Help



duct

**FROM:**  
E & E COMPANY LTD  
2161 Pudong S. Road

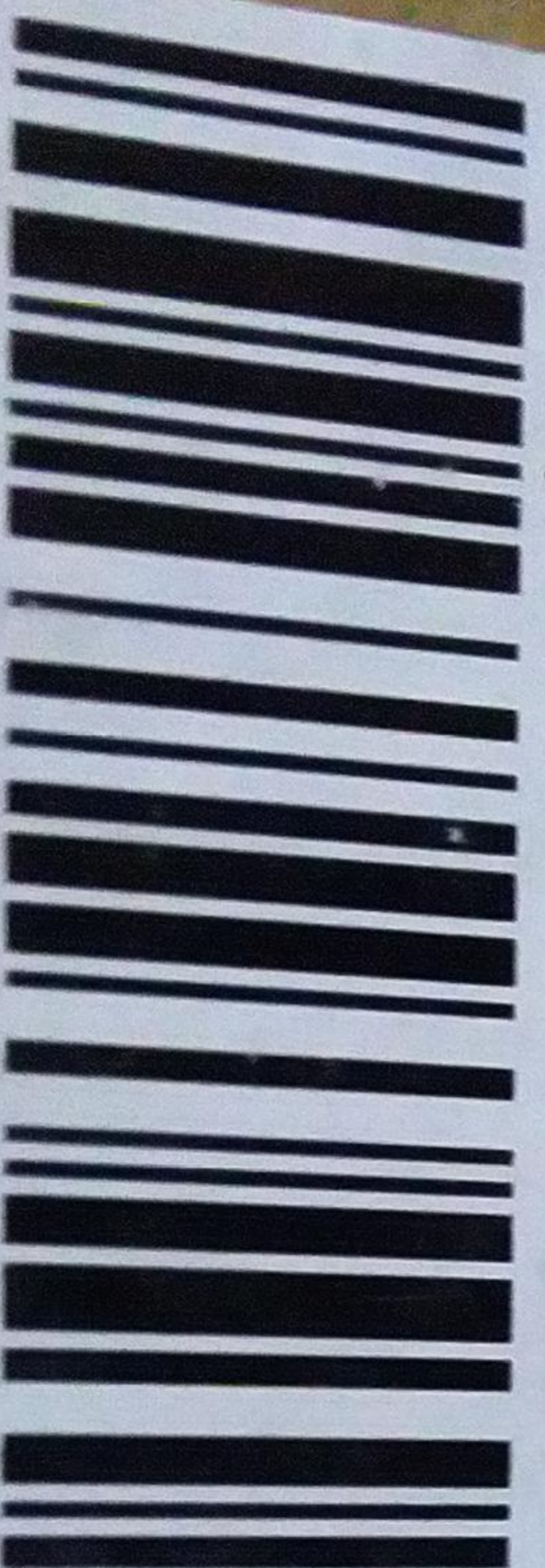
Shanghai, SH 200127

**TO: Macy's**  
Macy's Home Store Goodyear DC  
16575 West Commerce Drive

Goodyear, AZ 85338

**SHIP TO POSTAL CODE**  
(420)

85338



**CARRIER:**

**PRO:**

**B/L NUMBER:**

7184221

QTY: 3

**PO: 2505453**

MCH10-5193

**DEPT: 0606**

CARTON # 254 of 817

**FROM:**  
E & E COMPANY LTD  
2161 PuDong S. Road

Shanghai, SH 200127

SHIP TO POST  
(420)



85338

CARRIER:

PRO:

B/L NUMBER:

**PO: 2505827**

7184663

QTY: 3

**DEPT: 0606**

MCH10 - 1564

CARTON # 110 of 296

**HOME TEXTILES**

FOR Macy's

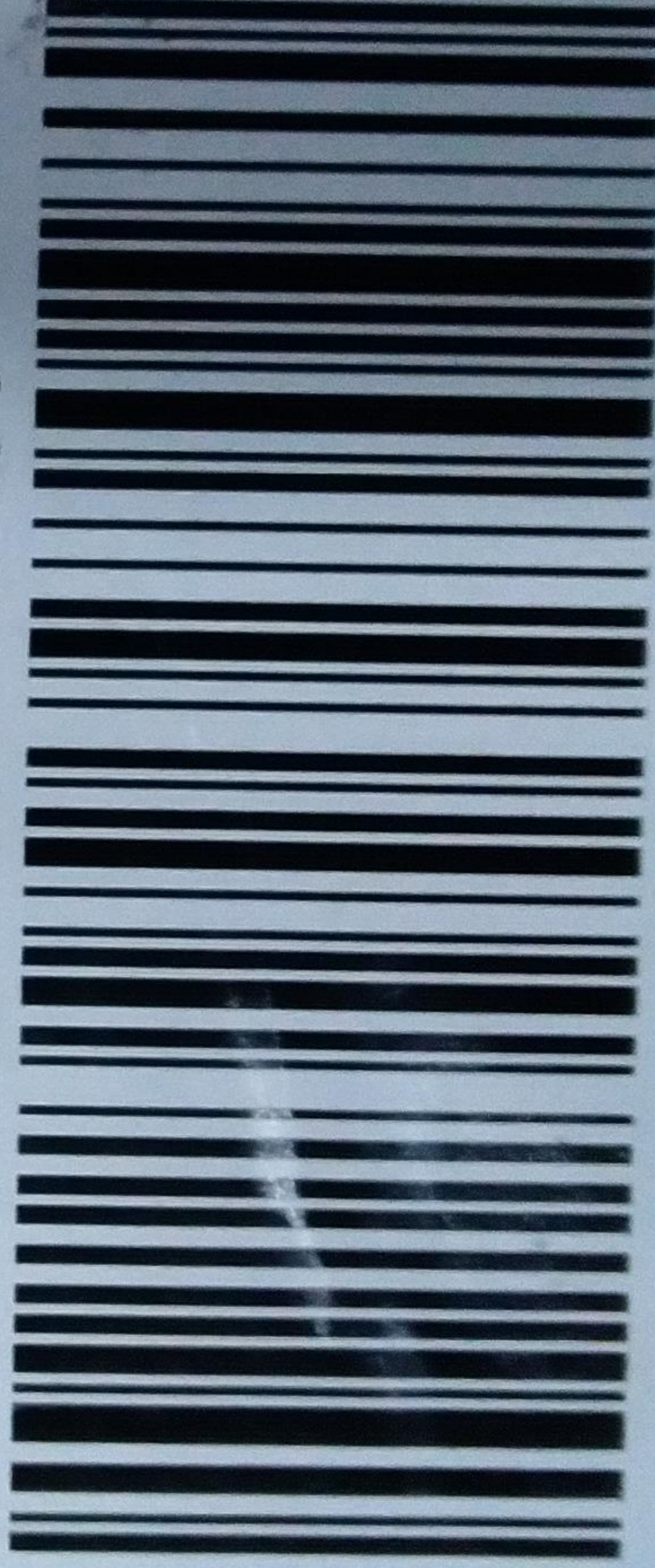
**ST#: 0858**

Macys Home Store CFC Goodyear PS

16575 West Commerce Lane  
Goodyear AZ 85338 US

SERIAL SHIPPING CONTAINER

(00) 0 0 675716 704535858 9



**FROM:**  
E & E COMPANY LTD  
2161 PuDong S. Road

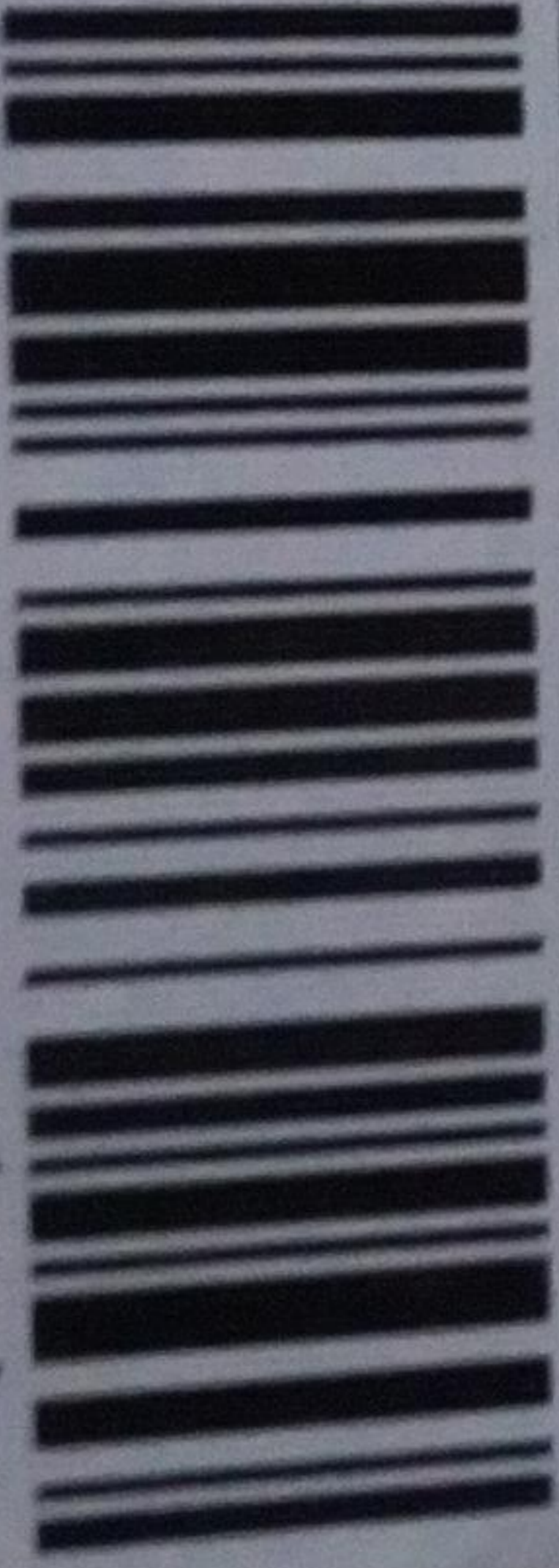
**TO: Macy's**  
Macys Home Store Goodyear DC  
16575 West Commerce Drive

Shanghai, SH 200127

Goodyear, AZ 85338

SHIP TO POSTAL CODE  
(420)

85338



CARRIER:

PRO:

B/L NUMBER:

QTY: 3

7184442

MCH10-5181

CARTON # 664 of 669

**PQ: 2505970**

**DEPT: 0606**

FOR Macy's

**ST#: 0858**

HOME TEXTILES

Macys Home Store CFC Goodyear PS

16575 West Commerce Lane  
Goodyear AZ 85338 US

SERIAL SHIPPING CONTAINER

(00) 0 0 675716 704537735 1



**FROM:**

E & E COMPANY LTD  
2161 PuDong S. Road

Shanghai, SH 200127

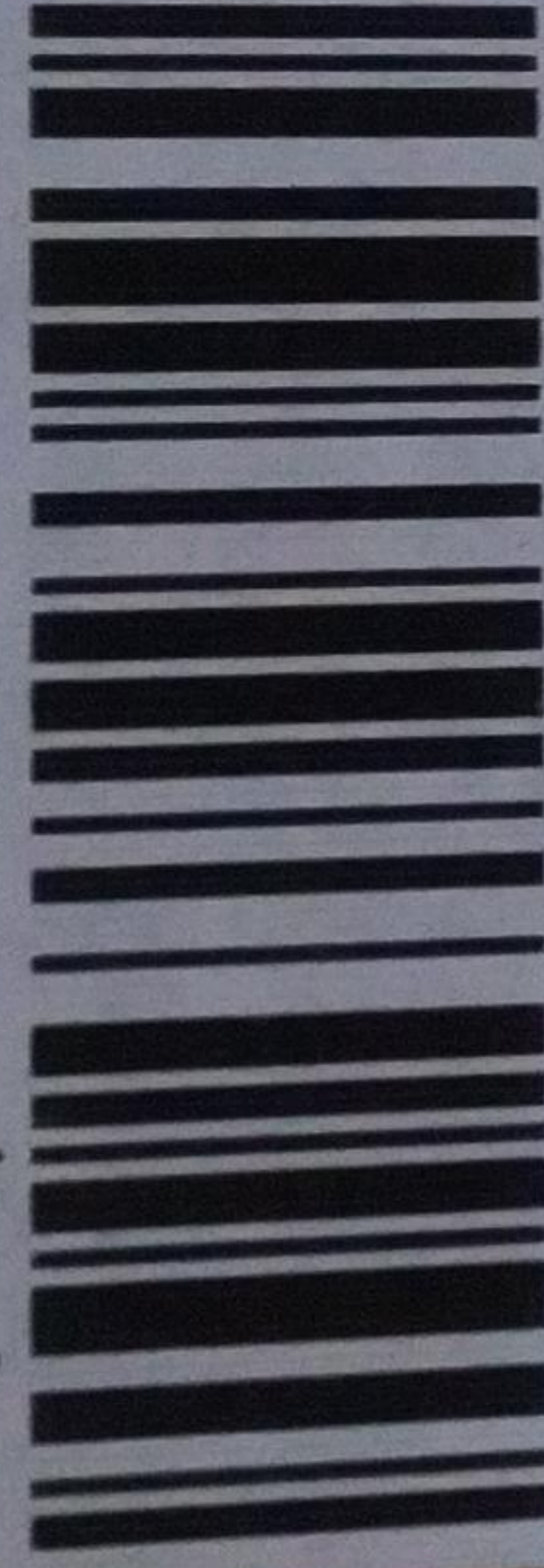
**TO: Macy's**

Macys Home Store Goodyear DC  
16575 West Commerce Drive

Goodyear, AZ 85338

SHIP TO POSTAL CODE  
(420)

85338



CARRIER:

PRO:

B/L NUMBER:

**PO: 2506465**

7184669

QTY: 3

**DEPT: 0606**

MCH10 - 5406

CARTON # 153 of 324

**HOME TEXTILES**

FOR Macy's

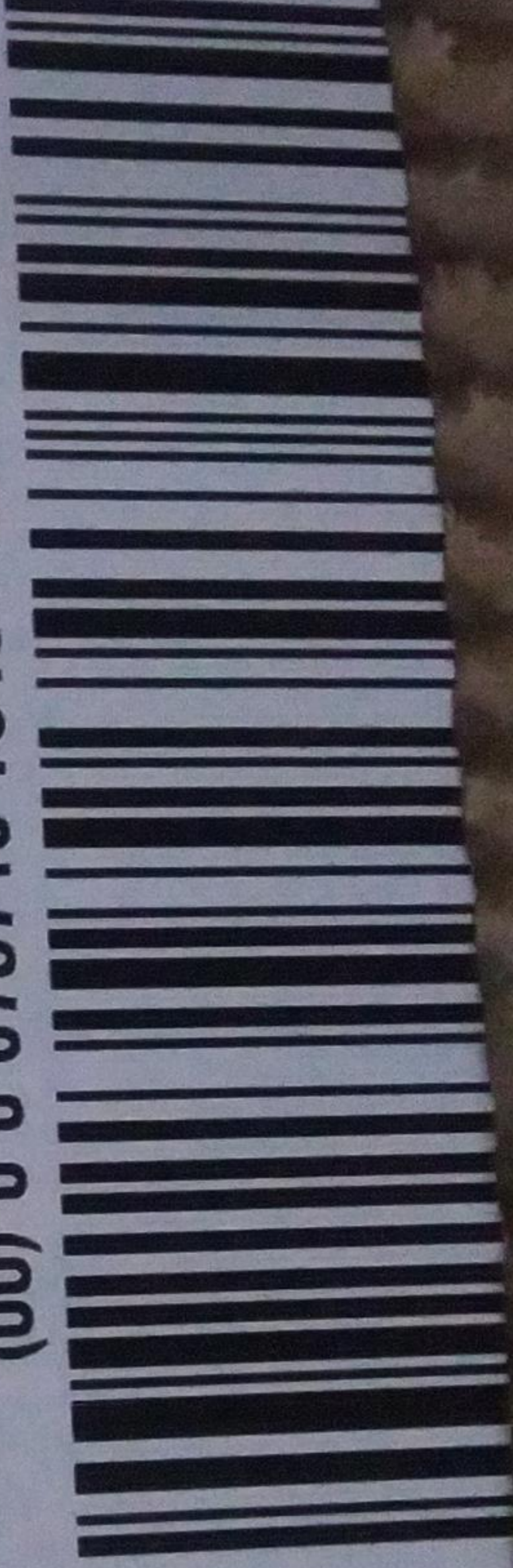
**ST#: 0858**

Macys Home Store CFC Goodyear PS

16575 West Commerce Lane  
Goodyear AZ 85338 US

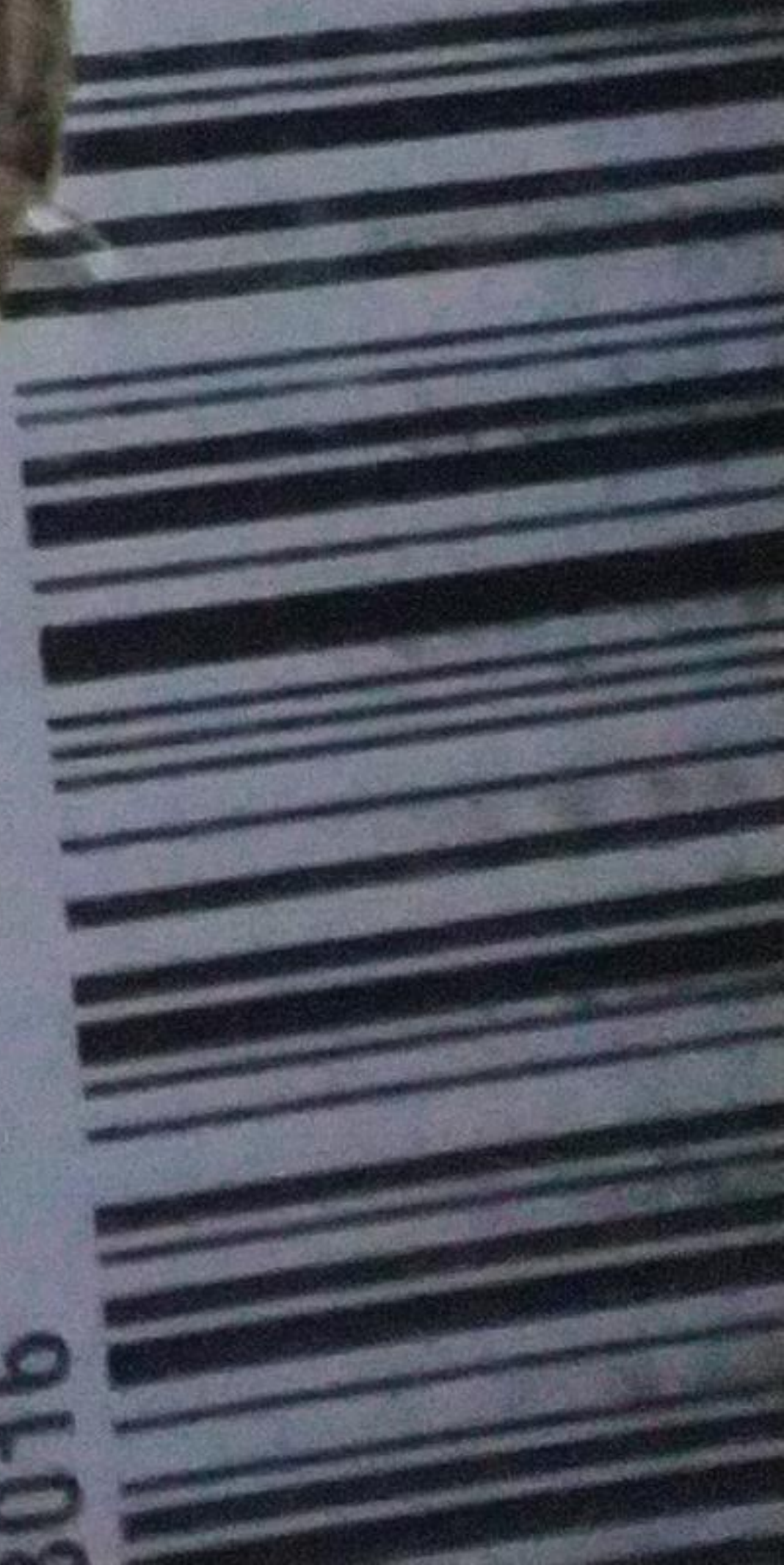
SERIAL SHIPPING CONTAINER

(00) 0 0 675716 704541801 6



3016

PR  
11/11



**FROM:**  
E & E COMPANY LTD  
2161 Pudong S. Road

Shanghai, SH 200127

**TO: Macy's**  
Macy's Home Store Goodyear DC  
16575 West Commerce Drive

Goodyear, AZ 85338

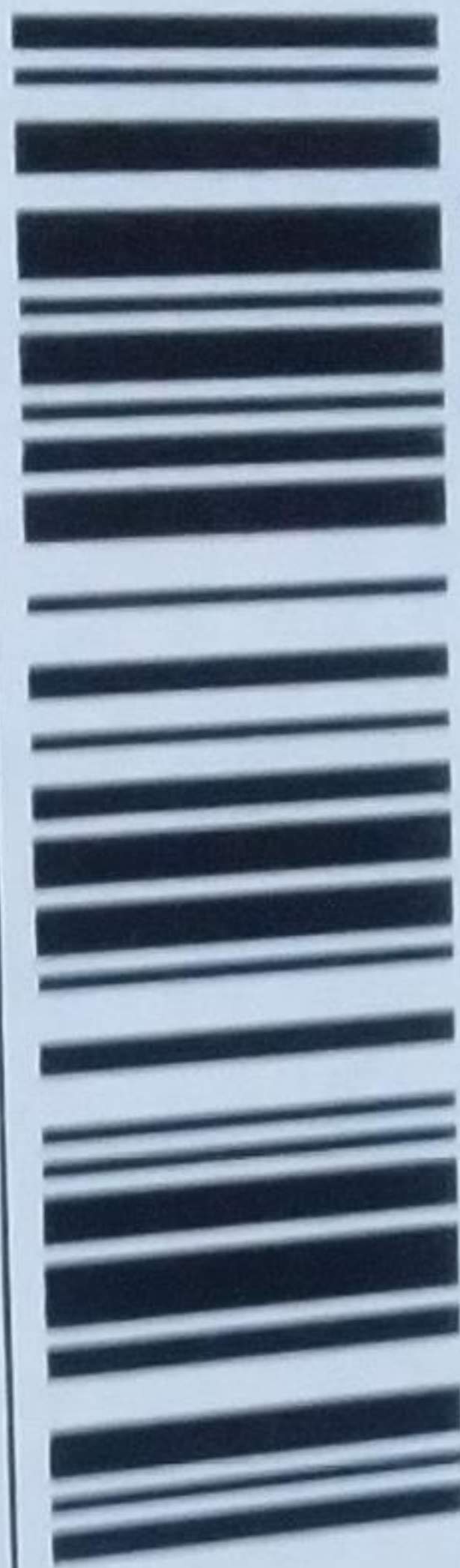
SHIP TO POSTAL CODE  
(420)

85338

CARRIER:

PRO:

B/L NUMBER:



7184666

QTY: 3

MCH10 - 5392

**PO: 2506311**

**DEPT: 0606**

CARTON # 42 of 56

FOR Macy's

**ST#: 0858**

**HOME TEXTILES**

Macy's Home Store CFC Goodyear PS

16575 West Commerce Lane  
Goodyear AZ 85338 US

SERIAL SHIPPING CONTAINER

(00) 0 0 675716 704536985 1

