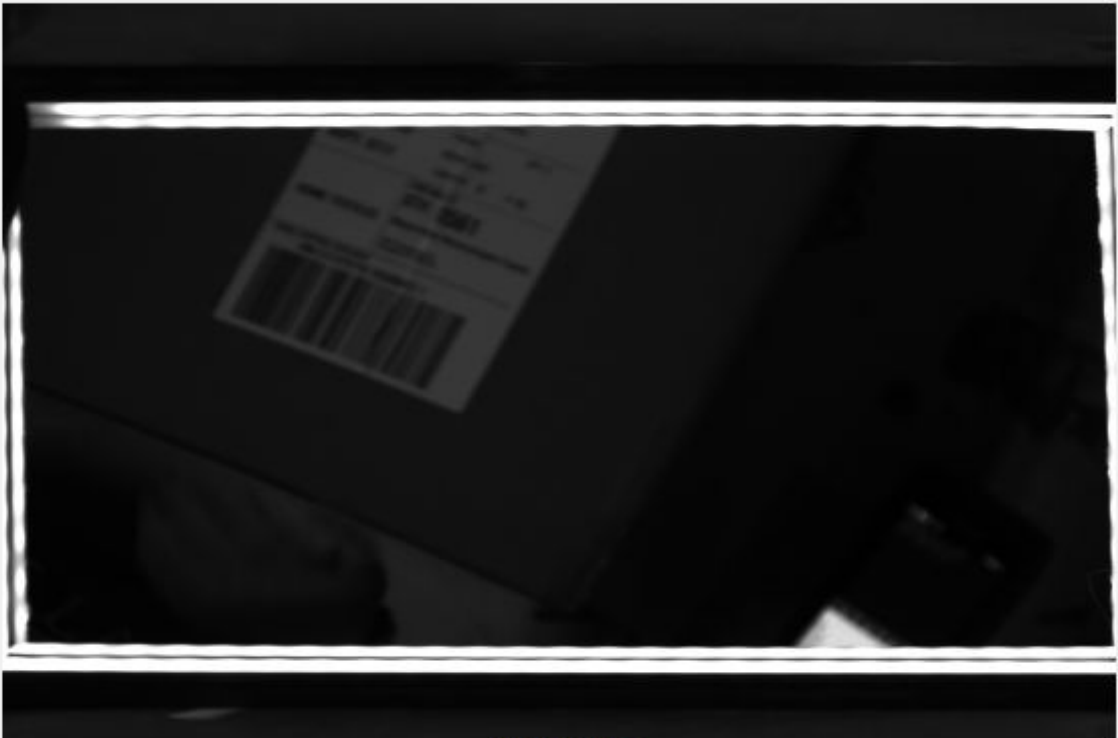




SCANALYST 3 Report



Inspected Image

This barcode could not be read or verified. The SSCC barcode data had to be key entered

*The Overall Grade Is The Average Of 10 Scan Profile Grades

Barcode Print Quality-Overall
Barcode Data Content
Barcode Physical Detail

Unreadable
00006757167033800731
Physical Details are not available when the SSCC is manually entered

Scan Profile Details are not available when the SSCC is manually entered

Resources - Links are case sensitive

GS1 Specifications For SSCC Labels - 2018
www.gs1.org/docs/barcodes/GS1_General_Specifications.pdf

Laymans Guide to Barcode Verification
www.scanalyst.com/resources/LaymansGuidetoANSI_rev_2002.pdf

Additional helpful information www.Goodbarcodes.com

SCANALYST 3 inspection processes are based on current AIDC standards such as ISO ISO/IEC 15415, ISO/IEC 15416, ISO/IEC 15426-1, ISO/IEC 15426-2, ISO/IEC TR 29158 (AIM DPM) and GS1 General Specifications for multiple field data carriers.
Copyright Automatic Identification Systems, Inc. 1993-2018, a U.S.A. based veteran owned company www.scanalyst.com

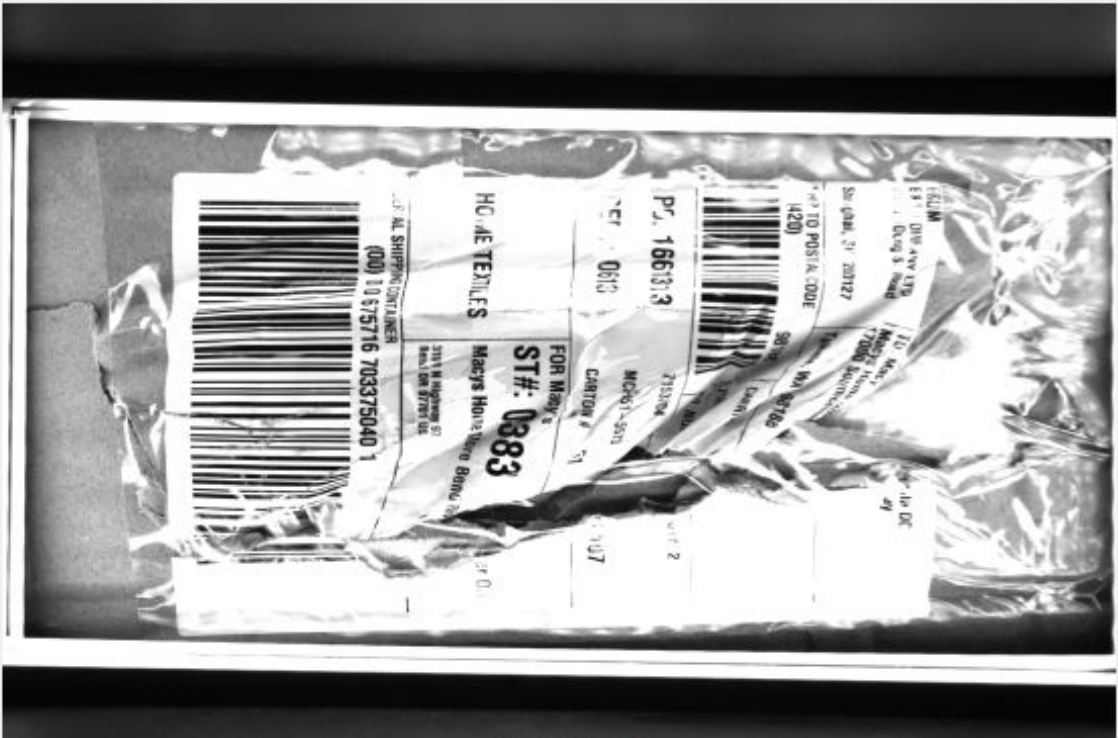


[Scan For Help](#)





SCANALYST 3 Report



Inspected Image

This barcode could not be read or verified. The SSCC barcode data had to be key entered

*The Overall Grade Is The Average Of 10 Scan Profile Grades

Barcode Print Quality-Overall
Barcode Data Content
Barcode Physical Detail

Unreadable
00006757167033750401
Physical Details are not available when the SSCC is manually entered

Scan Profile Details are not available when the SSCC is manually entered

Resources - Links are case sensitive

GS1 Specifications For SSCC Labels - 2018
www.gs1.org/docs/barcodes/GS1_General_Specifications.pdf

Laymans Guide to Barcode Verification
www.scanalyst.com/resources/LaymansGuidetoANSI_rev_2002.pdf

Additional helpful information www.Goodbarcodes.com

SCANALYST 3 inspection processes are based on current AIDC standards such as ISO ISO/IEC 15415, ISO/IEC 15416, ISO/IEC 15426-1, ISO/IEC 15426-2, ISO/IEC TR 29158 (AIM DPM) and GS1 General Specifications for multiple field data carriers.
Copyright Automatic Identification Systems, Inc. 1993-2018, a U.S.A. based veteran owned company www.scanalyst.com



Scan For Help





SCANALYST 3 Report



Inspected Image

*The Overall Grade Is The Average Of 10 Scan Profile Grades

Barcode Print Quality-Overall
Barcode Data Content
Barcode Physical Detail

1.1 (D)
00006757167033803336 AI - 00 Title - SSCC Length - 20
X Dim 0.018 Height 1.109 Width 2.839

Verification Report

Code Type: Code 128
 Overall Symbol Grade: 1.1 (D)
 Aperture: 4.418 px Relative Mode

Scan reflectance profile #0 analysis

Scan reflectance profile grade 3.0 (B)

Parameter	Value	Grade
Decode	Yes	4.0 (A)
Rmax	1.0000	N/A
Rmin	0.0392	4.0 (A)
Global Threshold	0.9608	N/A
Symbol Contrast	0.9608	4.0 (A)
Min. edge contrast	0.5804	4.0 (A)
Modulation	0.6041	3.0 (B)
Defects	0.0327	4.0 (A)
Decodability	0.8638	4.0 (A)
Quiet zone	1.2858	4.0 (A)

Resources - Links are case sensitive

GS1 Specifications For SSCC Labels - 2018
www.gs1.org/docs/barcodes/GS1_General_Specifications.pdf

Laymans Guide to Barcode Verification
www.scanalyst.com/resources/LaymansGuidetoANSI_rev_2002.pdf

Additional helpful information www.Goodbarcodes.com

SCANALYST 3 inspection processes are based on current AIDC standards such as ISO ISO/IEC 15415, ISO/IEC 15416, ISO/IEC 15426-1, ISO/IEC 15426-2, ISO/IEC TR 29158 (AIM DPM) and GS1 General Specifications for multiple field data carriers.
 Copyright Automatic Identification Systems, Inc. 1993-2018, a U.S.A. based veteran owned company www.scanalyst.com



Scan For Help





SCANALYST 3 Report



Inspected Image

*The Overall Grade Is The Average Of 10 Scan Profile Grades

Barcode Print Quality-Overall
Barcode Data Content
Barcode Physical Detail

1.6 (C)
00006757167033762480
AI - 00 Title - SSCC Length - 20
X Dim 0.018 Height 1.124 Width 2.827

Verification Report

Code Type: Code 128
 Overall Symbol Grade: 1.6 (C)
 Aperture: 4.402 px Relative Mode

Scan reflectance profile #0 analysis

Scan reflectance profile grade 3.0 (B)

Parameter	Value	Grade
Decode	Yes	4.0 (A)
Rmax	0.9961	N/A
Rmin	0.0392	4.0 (A)
Global Threshold	0.9569	N/A
Symbol Contrast	0.9569	4.0 (A)
Min. edge contrast	0.6784	4.0 (A)
Modulation	0.7090	4.0 (A)
Defects	0.0779	4.0 (A)
Decodability	0.5165	3.0 (B)
Quiet zone	-1.2888	4.0 (A)

Resources - Links are case sensitive

GS1 Specifications For SSCC Labels - 2018
www.gs1.org/docs/barcodes/GS1_General_Specifications.pdf

Laymans Guide to Barcode Verification
www.scanalyst.com/resources/LaymansGuidetoANSI_rev_2002.pdf

Additional helpful information www.Goodbarcodes.com

SCANALYST 3 inspection processes are based on current AIDC standards such as ISO ISO/IEC 15415, ISO/IEC 15416, ISO/IEC 15426-1, ISO/IEC 15426-2, ISO/IEC TR 29158 (AIM DPM) and GS1 General Specifications for multiple field data carriers.
 Copyright Automatic Identification Systems, Inc. 1993-2018, a U.S.A. based veteran owned company www.scanalyst.com

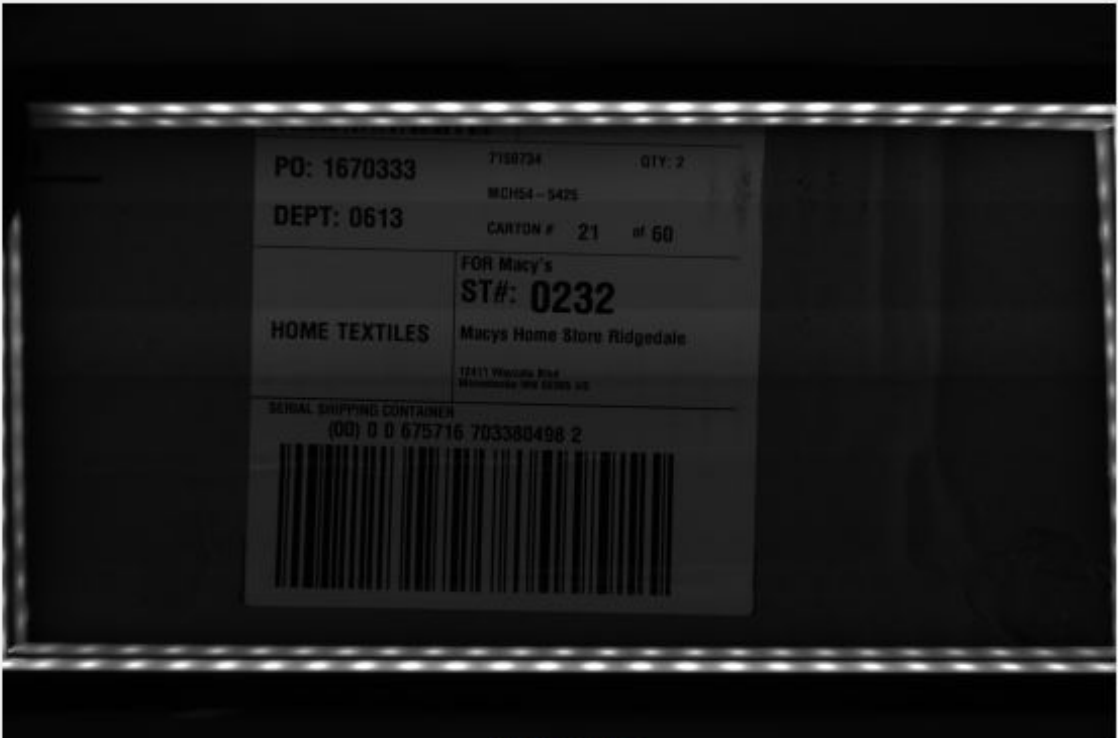


Scan For Help





SCANALYST 3 Report



Inspected Image

*The Overall Grade Is The Average Of 10 Scan Profile Grades

- Barcode Print Quality-Overall**
- Barcode Data Content**
- Barcode Physical Detail**

0.0 (F)		
00006757167033804982		
AI - 00	Title - SSCC	Length - 20
X Dim	Height	Width
0.018	1.079	2.743

Verification Report

Code Type: Code 128
 Overall Symbol Grade: 0.0 (F)
 Aperture: 4.359 px Relative Mode

Scan reflectance profile #0 analysis

Scan reflectance profile grade 0.0 (F)

Parameter	Value	Grade
Decode	Yes	4.0 (A)
Rmax	0.1490	N/A
Rmin	0.0039	4.0 (A)
Global Threshold	0.1451	N/A
Symbol Contrast	0.1451	0.0 (F)
Min. edge contrast	0.0980	0.0 (F)
Modulation	0.6757	3.0 (B)
Defects	0.0811	4.0 (A)
Decodability	0.8668	4.0 (A)
Quiet zone	-1.2114	4.0 (A)

Resources - Links are case sensitive

GS1 Specifications For SSCC Labels - 2018
www.gs1.org/docs/barcodes/GS1_General_Specifications.pdf

Laymans Guide to Barcode Verification
www.scanalyst.com/resources/LaymansGuidetoANSI_rev_2002.pdf

Additional helpful information www.Goodbarcodes.com

SCANALYST 3 inspection processes are based on current AIDC standards such as ISO ISO/IEC 15415, ISO/IEC 15416, ISO/IEC 15426-1, ISO/IEC 15426-2, ISO/IEC TR 29158 (AIM DPM) and GS1 General Specifications for multiple field data carriers.
 Copyright Automatic Identification Systems, Inc. 1993-2018, a U.S.A. based veteran owned company www.scanalyst.com



Scan For Help



SCANALYST 3 Report



Inspected Image

*The Overall Grade Is The Average Of 10 Scan Profile Grades

Barcode Print Quality-Overall	0.0 (F)
Barcode Data Content	00006757167033795105 AI - 00 Title - SSCC Length - 20
Barcode Physical Detail	X Dim 0.018 Height 1.132 Width 2.845

Verification Report

Code Type: Code 128
 Overall Symbol Grade: 0.0 (F)
 Aperture: 4.430 px Relative Mode

Scan reflectance profile #0 analysis

Scan reflectance profile grade 0.0 (F)

Parameter	Value	Grade
Decode	Yes	4.0 (A)
Rmax	1.0000	N/A
Rmin	0.0392	4.0 (A)
Global Threshold	0.9608	N/A
Symbol Contrast	0.9608	4.0 (A)
Min. edge contrast	0.7725	4.0 (A)
Modulation	0.8041	4.0 (A)
Defects	0.4245	0.0 (F)
Decodability	0.0947	0.0 (F)
Quiet zone	-0.6521	0.0 (F)

Resources - Links are case sensitive

GS1 Specifications For SSCC Labels - 2018
www.gs1.org/docs/barcodes/GS1_General_Specifications.pdf

Laymans Guide to Barcode Verification
www.scanalyst.com/resources/LaymansGuidetoANSI_rev_2002.pdf

Additional helpful information www.Goodbarcodes.com

SCANALYST 3 inspection processes are based on current AIDC standards such as ISO ISO/IEC 15415, ISO/IEC 15416, ISO/IEC 15426-1, ISO/IEC 15426-2, ISO/IEC TR 29158 (AIM DPM) and GS1 General Specifications for multiple field data carriers.

Copyright Automatic Identification Systems, Inc. 1993-2018, a U.S.A. based veteran owned company www.scanalyst.com



Scan For Help





SCANALYST 3 Report



Inspected Image

*The Overall Grade Is The Average Of 10 Scan Profile Grades

Barcode Print Quality-Overall
Barcode Data Content
Barcode Physical Detail

0.5 (D)
00006757167033054363
AI - 00 Title - SSCC Length - 20
X Dim 0.018 Height 1.129 Width 2.752

Verification Report

Code Type: Code 128
 Overall Symbol Grade: 0.5 (D)
 Aperture: 4.279 px Relative Mode

Scan reflectance profile #0 analysis

Scan reflectance profile grade 2.0 (C)

Parameter	Value	Grade
Decode	Yes	4.0 (A)
Rmax	0.7725	N/A
Rmin	0.0196	4.0 (A)
Global Threshold	0.7529	N/A
Symbol Contrast	0.7529	4.0 (A)
Min. edge contrast	0.4392	4.0 (A)
Modulation	0.5833	2.0 (C)
Defects	0.0625	4.0 (A)
Decodability	0.3704	2.0 (C)
Quiet zone	-1.2755	4.0 (A)

Resources - Links are case sensitive

GS1 Specifications For SSCC Labels - 2018
www.gs1.org/docs/barcodes/GS1_General_Specifications.pdf

Laymans Guide to Barcode Verification
www.scanalyst.com/resources/LaymansGuidetoANSI_rev_2002.pdf

Additional helpful information www.Goodbarcodes.com

SCANALYST 3 inspection processes are based on current AIDC standards such as ISO ISO/IEC 15415, ISO/IEC 15416, ISO/IEC 15426-1, ISO/IEC 15426-2, ISO/IEC TR 29158 (AIM DPM) and GS1 General Specifications for multiple field data carriers.
 Copyright Automatic Identification Systems, Inc. 1993-2018, a U.S.A. based veteran owned company www.scanalyst.com



Scan For Help





SCANALYST 3 Report



Inspected Image

*The Overall Grade Is The Average Of 10 Scan Profile Grades

Barcode Print Quality-Overall
Barcode Data Content
Barcode Physical Detail

0.0 (F)
00006757167044253434 AI - 00 Title - SSCC Length - 20
X Dim 0.018 Height 1.093 Width 2.754

Verification Report

Code Type: Code 128
 Overall Symbol Grade: 0.0 (F)
 Aperture: 4.423 px Relative Mode

Scan reflectance profile #0 analysis

Scan reflectance profile grade 0.0 (F)

Parameter	Value	Grade
Decode	No	0.0 (F)
Rmax	0.9529	N/A
Rmin	0.0314	4.0 (A)
Global Threshold	0.9216	N/A
Symbol Contrast	0.9216	4.0 (A)
Min. edge contrast	0.1608	4.0 (A)
Modulation	0.1745	0.0 (F)
Defects	0.2511	1.0 (D)
Decodability	0.0000	0.0 (F)
Quiet zone	-0.1432	0.0 (F)

Resources - Links are case sensitive

GS1 Specifications For SSCC Labels - 2018
www.gs1.org/docs/barcodes/GS1_General_Specifications.pdf

Laymans Guide to Barcode Verification
www.scanalyst.com/resources/LaymansGuidetoANSI_rev_2002.pdf

Additional helpful information www.Goodbarcodes.com

SCANALYST 3 inspection processes are based on current AIDC standards such as ISO ISO/IEC 15415, ISO/IEC 15416, ISO/IEC 15426-1, ISO/IEC 15426-2, ISO/IEC TR 29158 (AIM DPM) and GS1 General Specifications for multiple field data carriers.
 Copyright Automatic Identification Systems, Inc. 1993-2018, a U.S.A. based veteran owned company www.scanalyst.com



Scan For Help





SCANALYST 3 Report



Inspected Image

*The Overall Grade Is The Average Of 10 Scan Profile Grades

Barcode Print Quality-Overall
Barcode Data Content
Barcode Physical Detail

0.3 (F)
00006757167033761803
AI - 00 Title - SSCC Length - 20
X Dim 0.018 Height 1.116 Width 2.755

Verification Report

Code Type: Code 128
 Overall Symbol Grade: 0.3 (F)
 Aperture: 4.406 px Relative Mode

Scan reflectance profile #0 analysis

Scan reflectance profile grade 0.0 (F)

Parameter	Value	Grade
Decode	Yes	4.0 (A)
Rmax	0.8745	N/A
Rmin	0.0235	4.0 (A)
Global Threshold	0.8510	N/A
Symbol Contrast	0.8510	4.0 (A)
Min. edge contrast	0.1882	4.0 (A)
Modulation	0.2212	0.0 (F)
Defects	0.0737	4.0 (A)
Decodability	0.0394	0.0 (F)
Quiet zone	1.2455	4.0 (A)

Resources - Links are case sensitive

GS1 Specifications For SSCC Labels - 2018
www.gs1.org/docs/barcodes/GS1_General_Specifications.pdf

Laymans Guide to Barcode Verification
www.scanalyst.com/resources/LaymansGuidetoANSI_rev_2002.pdf

Additional helpful information www.Goodbarcodes.com

SCANALYST 3 inspection processes are based on current AIDC standards such as ISO ISO/IEC 15415, ISO/IEC 15416, ISO/IEC 15426-1, ISO/IEC 15426-2, ISO/IEC TR 29158 (AIM DPM) and GS1 General Specifications for multiple field data carriers.
 Copyright Automatic Identification Systems, Inc. 1993-2018, a U.S.A. based veteran owned company www.scanalyst.com

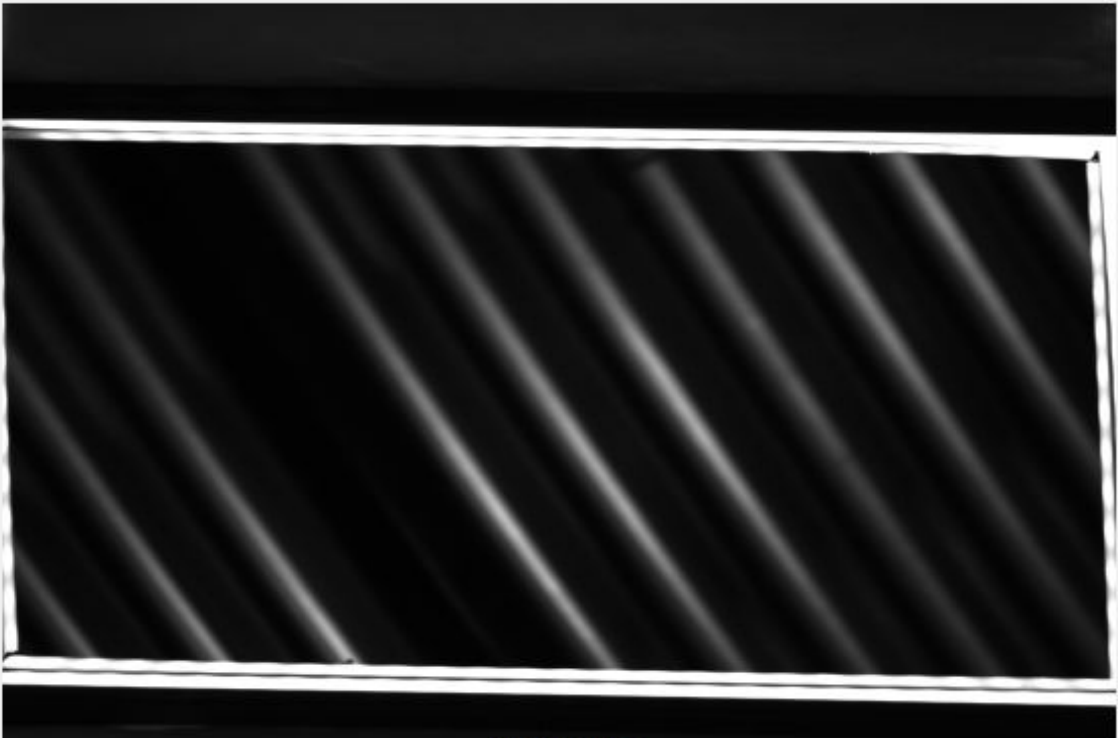


Scan For Help





SCANALYST 3 Report



Inspected Image

This barcode could not be read or verified. The SSCC barcode data had to be key entered

*The Overall Grade Is The Average Of 10 Scan Profile Grades

Barcode Print Quality-Overall
Barcode Data Content
Barcode Physical Detail

Unreadable
00006757167033064492
Physical Details are not available when the SSCC is manually entered

Scan Profile Details are not available when the SSCC is manually entered

Resources - Links are case sensitive

GS1 Specifications For SSCC Labels - 2018
www.gs1.org/docs/barcodes/GS1_General_Specifications.pdf

Laymans Guide to Barcode Verification
www.scanalyst.com/resources/LaymansGuidetoANSI_rev_2002.pdf

Additional helpful information www.Goodbarcodes.com

SCANALYST 3 inspection processes are based on current AIDC standards such as ISO ISO/IEC 15415, ISO/IEC 15416, ISO/IEC 15426-1, ISO/IEC 15426-2, ISO/IEC TR 29158 (AIM DPM) and GS1 General Specifications for multiple field data carriers.
Copyright Automatic Identification Systems, Inc. 1993-2018, a U.S.A. based veteran owned company www.scanalyst.com



[Scan For Help](#)



SCANALYST 3 Report



Inspected Image

The barcode height is supposed to be 1.25 in. high. This barcode is out of spec which impacts the ability to scan it and handle the package automatically.

*The Overall Grade Is The Average Of 10 Scan Profile Grades

Barcode Print Quality-Overall
Barcode Data Content
Barcode Physical Detail

0.5 (D)
00006757167033676039
AI - 00 Title - SSCC Length - 20
X Dim 0.018 Height 0.672 Width 2.846

Verification Report

Code Type: Code 128
 Overall Symbol Grade: 0.5 (D)
 Aperture: 4.426 px Relative Mode

Scan reflectance profile #0 analysis

Scan reflectance profile grade 2.0 (C)

Parameter	Value	Grade
Decode	Yes	4.0 (A)
Rmax	0.8157	N/A
Rmin	0.0235	4.0 (A)
Global Threshold	0.7922	N/A
Symbol Contrast	0.7922	4.0 (A)
Min. edge contrast	0.4235	4.0 (A)
Modulation	0.5347	2.0 (C)
Defects	0.1287	4.0 (A)
Decodability	0.7055	4.0 (A)
Quiet zone	-1.1741	4.0 (A)

Resources - Links are case sensitive

GS1 Specifications For SSCC Labels - 2018
www.gs1.org/docs/barcodes/GS1_General_Specifications.pdf

Laymans Guide to Barcode Verification
www.scanalyst.com/resources/LaymansGuidetoANSI_rev_2002.pdf

Additional helpful information www.Goodbarcodes.com

SCANALYST 3 inspection processes are based on current AIDC standards such as ISO ISO/IEC 15415, ISO/IEC 15416, ISO/IEC 15426-1, ISO/IEC 15426-2, ISO/IEC TR 29158 (AIM DPM) and GS1 General Specifications for multiple field data carriers.
 Copyright Automatic Identification Systems, Inc. 1993-2018, a U.S.A. based veteran owned company www.scanalyst.com



Scan For Help





SCANALYST 3 Report



Inspected Image

This barcode could not be read or verified. The SSCC barcode data had to be key entered

*The Overall Grade Is The Average Of 10 Scan Profile Grades

Barcode Print Quality-Overall
Barcode Data Content
Barcode Physical Detail

Unreadable
00006757167044249352
Physical Details are not available when the SSCC is manually entered

Scan Profile Details are not available when the SSCC is manually entered

Resources - Links are case sensitive

GS1 Specifications For SSCC Labels - 2018
www.gs1.org/docs/barcodes/GS1_General_Specifications.pdf

Laymans Guide to Barcode Verification
www.scanalyst.com/resources/LaymansGuidetoANSI_rev_2002.pdf

Additional helpful information www.Goodbarcodes.com

SCANALYST 3 inspection processes are based on current AIDC standards such as ISO ISO/IEC 15415, ISO/IEC 15416, ISO/IEC 15426-1, ISO/IEC 15426-2, ISO/IEC TR 29158 (AIM DPM) and GS1 General Specifications for multiple field data carriers.
Copyright Automatic Identification Systems, Inc. 1993-2018, a U.S.A. based veteran owned company www.scanalyst.com



[Scan For Help](#)





SCANALYST 3 Report



Inspected Image

*The Overall Grade Is The Average Of 10 Scan Profile Grades

Barcode Print Quality-Overall
Barcode Data Content
Barcode Physical Detail

1.7 (C)
00006757167033806313
AI - 00 Title - SSCC Length - 20
X Dim 0.018 Height 1.139 Width 2.858

Verification Report

Code Type: Code 128
 Overall Symbol Grade: 1.7 (C)
 Aperture: 4.455 px Relative Mode

Scan reflectance profile #0 analysis

Scan reflectance profile grade 4.0 (A)

Parameter	Value	Grade
Decode	Yes	4.0 (A)
Rmax	1.0000	N/A
Rmin	0.0314	4.0 (A)
Global Threshold	0.9686	N/A
Symbol Contrast	0.9686	4.0 (A)
Min. edge contrast	0.8314	4.0 (A)
Modulation	0.8583	4.0 (A)
Defects	0.0283	4.0 (A)
Decodability	0.8907	4.0 (A)
Quiet zone	-1.2983	4.0 (A)

Resources - Links are case sensitive

- GS1 Specifications For SSCC Labels - 2018
www.gs1.org/docs/barcodes/GS1_General_Specifications.pdf
- Laymans Guide to Barcode Verification
www.scanalyst.com/resources/LaymansGuidetoANSI_rev_2002.pdf
- Additional helpful information www.Goodbarcodes.com

SCANALYST 3 inspection processes are based on current AIDC standards such as ISO ISO/IEC 15415, ISO/IEC 15416, ISO/IEC 15426-1, ISO/IEC 15426-2, ISO/IEC TR 29158 (AIM DPM) and GS1 General Specifications for multiple field data carriers.
 Copyright Automatic Identification Systems, Inc. 1993-2018, a U.S.A. based veteran owned company www.scanalyst.com



Scan For Help





SCANALYST 3 Report



Inspected Image

*The Overall Grade Is The Average Of 10 Scan Profile Grades

Barcode Print Quality-Overall
Barcode Data Content
Barcode Physical Detail

0.1 (F)
00006757167032970381 AI - 00 Title - SSCC Length - 20
X Dim 0.018 Height 1.128 Width 2.822

Verification Report

Code Type: Code 128
 Overall Symbol Grade: 0.1 (F)
 Aperture: 4.394 px Relative Mode

Scan reflectance profile #0 analysis

Scan reflectance profile grade 0.0 (F)

Parameter	Value	Grade
Decode	No	0.0 (F)
Rmax	1.0000	N/A
Rmin	0.0392	4.0 (A)
Global Threshold	0.9608	N/A
Symbol Contrast	0.9608	4.0 (A)
Min. edge contrast	0.1216	0.0 (F)
Modulation	0.1265	0.0 (F)
Defects	0.3551	0.0 (F)
Decodability	0.0192	0.0 (F)
Quiet zone	-1.3051	4.0 (A)

Resources - Links are case sensitive

GS1 Specifications For SSCC Labels - 2018
www.gs1.org/docs/barcodes/GS1_General_Specifications.pdf

Laymans Guide to Barcode Verification
www.scanalyst.com/resources/LaymansGuidetoANSI_rev_2002.pdf

Additional helpful information www.Goodbarcodes.com

SCANALYST 3 inspection processes are based on current AIDC standards such as ISO ISO/IEC 15415, ISO/IEC 15416, ISO/IEC 15426-1, ISO/IEC 15426-2, ISO/IEC TR 29158 (AIM DPM) and GS1 General Specifications for multiple field data carriers.
 Copyright Automatic Identification Systems, Inc. 1993-2018, a U.S.A. based veteran owned company www.scanalyst.com

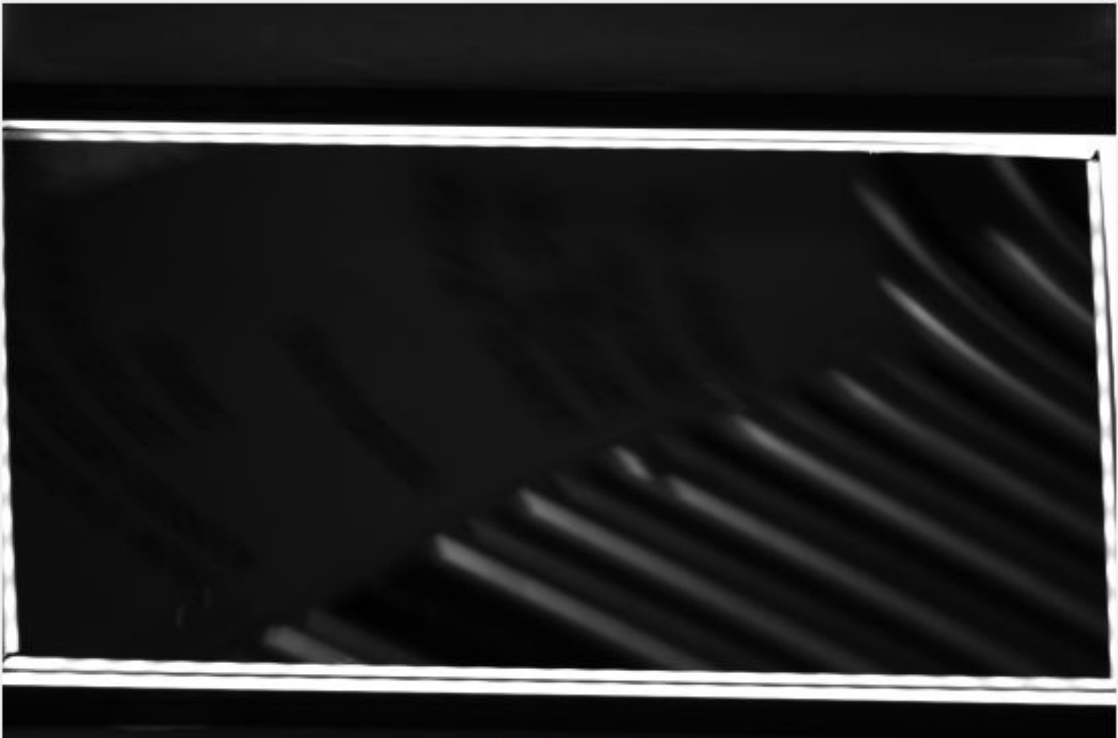


Scan For Help





SCANALYST 3 Report



Inspected Image

This barcode could not be read or verified. The SSCC barcode data had to be key entered

*The Overall Grade Is The Average Of 10 Scan Profile Grades

Barcode Print Quality-Overall
Barcode Data Content
Barcode Physical Detail

Unreadable
00006757167033764637
Physical Details are not available when the SSCC is manually entered

Scan Profile Details are not available when the SSCC is manually entered

Resources - Links are case sensitive

GS1 Specifications For SSCC Labels - 2018
www.gs1.org/docs/barcodes/GS1_General_Specifications.pdf

Laymans Guide to Barcode Verification
www.scanalyst.com/resources/LaymansGuidetoANSI_rev_2002.pdf

Additional helpful information www.Goodbarcodes.com

SCANALYST 3 inspection processes are based on current AIDC standards such as ISO ISO/IEC 15415, ISO/IEC 15416, ISO/IEC 15426-1, ISO/IEC 15426-2, ISO/IEC TR 29158 (AIM DPM) and GS1 General Specifications for multiple field data carriers.
Copyright Automatic Identification Systems, Inc. 1993-2018, a U.S.A. based veteran owned company www.scanalyst.com



[Scan For Help](#)

