



SCANALYST 3 Report



Inspected Image

*The Overall Grade Is The Average Of 10 Scan Profile Grades

Barcode Print Quality-Overall
Barcode Data Content
Barcode Physical Detail

0.0 (F)
00006757167008896066 AI - 00 Title - SSCC Length - 20
X Dim 0.018 Height 1.112 Width 2.855

Verification Report

Code Type: Code 128
 Overall Symbol Grade: 0.0 (F)
 Aperture: 4.400 px Relative Mode

Scan reflectance profile #0 analysis

Scan reflectance profile grade 0.0 (F)

Parameter	Value	Grade
Decode	No	0.0 (F)
Rmax	0.1804	N/A
Rmin	0.0039	4.0 (A)
Global Threshold	0.1765	N/A
Symbol Contrast	0.1765	0.0 (F)
Min. edge contrast	0.0039	0.0 (F)
Modulation	0.0222	0.0 (F)
Defects	0.4667	0.0 (F)
Decodability	0.0776	0.0 (F)
Quiet zone	-1.2962	4.0 (A)

Resources - Links are case sensitive

GS1 Specifications For SSCC Labels - 2018
www.gs1.org/docs/barcodes/GS1_General_Specifications.pdf

Laymans Guide to Barcode Verification
www.scanalyst.com/resources/LaymansGuidetoANSI_rev_2002.pdf

Additional helpful information www.Goodbarcodes.com

SCANALYST 3 inspection processes are based on current AIDC standards such as ISO ISO/IEC 15415, ISO/IEC 15416, ISO/IEC 15426-1, ISO/IEC 15426-2, ISO/IEC TR 29158 (AIM DPM) and GS1 General Specifications for multiple field data carriers.
 Copyright Automatic Identification Systems, Inc. 1993-2018, a U.S.A. based veteran owned company www.scanalyst.com



Scan For Help





SCANALYST 3 Report



Inspected Image

*The Overall Grade Is The Average Of 10 Scan Profile Grades

- Barcode Print Quality-Overall**
- Barcode Data Content**
- Barcode Physical Detail**

0.0 (F)		
00006757167020509371		
AI - 00	Title - SSCC	Length - 20
X Dim	Height	Width
0.018	1.092	2.740

Verification Report

Code Type: Code 128
 Overall Symbol Grade: 0.0 (F)
 Aperture: 4.430 px Relative Mode

Scan reflectance profile #0 analysis

Scan reflectance profile grade 0.0 (F)

Parameter	Value	Grade
Decode	No	0.0 (F)
Rmax	1.0000	N/A
Rmin	0.0431	4.0 (A)
Global Threshold	0.9569	N/A
Symbol Contrast	0.9569	4.0 (A)
Min. edge contrast	0.6000	4.0 (A)
Modulation	0.6270	3.0 (B)
Defects	0.4590	0.0 (F)
Decodability	0.0000	0.0 (F)
Quiet zone	0.6691	0.0 (F)

Resources - Links are case sensitive

GS1 Specifications For SSCC Labels - 2018
www.gs1.org/docs/barcodes/GS1_General_Specifications.pdf

Laymans Guide to Barcode Verification
www.scanalyst.com/resources/LaymansGuidetoANSI_rev_2002.pdf

Additional helpful information www.Goodbarcodes.com

SCANALYST 3 inspection processes are based on current AIDC standards such as ISO ISO/IEC 15415, ISO/IEC 15416, ISO/IEC 15426-1, ISO/IEC 15426-2, ISO/IEC TR 29158 (AIM DPM) and GS1 General Specifications for multiple field data carriers.
 Copyright Automatic Identification Systems, Inc. 1993-2018, a U.S.A. based veteran owned company www.scanalyst.com



Scan For Help





SCANALYST 3 Report



Inspected Image

*The Overall Grade Is The Average Of 10 Scan Profile Grades

- Barcode Print Quality-Overall**
- Barcode Data Content**
- Barcode Physical Detail**

0.0 (F)		
00006757167025453228		
AI - 00	Title - SSCC	Length - 20
X Dim	Height	Width
0.018	1.173	2.865

Verification Report

Code Type: Code 128
 Overall Symbol Grade: 0.0 (F)
 Aperture: 4.415 px Relative Mode

Scan reflectance profile #0 analysis

Scan reflectance profile grade 0.0 (F)

Parameter	Value	Grade
Decode	No	0.0 (F)
Rmax	0.1137	N/A
Rmin	0.0039	4.0 (A)
Global Threshold	0.1098	N/A
Symbol Contrast	0.1098	0.0 (F)
Min. edge contrast	0.0078	0.0 (F)
Modulation	0.0714	0.0 (F)
Defects	0.4286	0.0 (F)
Decodability	0.0009	0.0 (F)
Quiet zone	-1.2492	4.0 (A)

Resources - Links are case sensitive

GS1 Specifications For SSCC Labels - 2018
www.gs1.org/docs/barcodes/GS1_General_Specifications.pdf

Laymans Guide to Barcode Verification
www.scanalyst.com/resources/LaymansGuidetoANSI_rev_2002.pdf

Additional helpful information www.Goodbarcodes.com

SCANALYST 3 inspection processes are based on current AIDC standards such as ISO ISO/IEC 15415, ISO/IEC 15416, ISO/IEC 15426-1, ISO/IEC 15426-2, ISO/IEC TR 29158 (AIM DPM) and GS1 General Specifications for multiple field data carriers.
 Copyright Automatic Identification Systems, Inc. 1993-2018, a U.S.A. based veteran owned company www.scanalyst.com



Scan For Help





SCANALYST 3 Report



Inspected Image

This barcode could not be read or verified. The SSCC barcode data had to be key entered

*The Overall Grade Is The Average Of 10 Scan Profile Grades

Barcode Print Quality-Overall
Barcode Data Content
Barcode Physical Detail

Unreadable
00006757167008731381
Physical Details are not available when the SSCC is manually entered

Scan Profile Details are not available when the SSCC is manually entered

Resources - Links are case sensitive

GS1 Specifications For SSCC Labels - 2018
www.gs1.org/docs/barcodes/GS1_General_Specifications.pdf

Laymans Guide to Barcode Verification
www.scanalyst.com/resources/LaymansGuidetoANSI_rev_2002.pdf

Additional helpful information www.Goodbarcodes.com

SCANALYST 3 inspection processes are based on current AIDC standards such as ISO ISO/IEC 15415, ISO/IEC 15416, ISO/IEC 15426-1, ISO/IEC 15426-2, ISO/IEC TR 29158 (AIM DPM) and GS1 General Specifications for multiple field data carriers.
Copyright Automatic Identification Systems, Inc. 1993-2018, a U.S.A. based veteran owned company www.scanalyst.com



Scan For Help



SCANALYST 3 Report



Inspected Image

*The Overall Grade Is The Average Of 10 Scan Profile Grades

Barcode Print Quality-Overall
Barcode Data Content
Barcode Physical Detail

0.0 (F)
00006757167020511657 AI - 00 Title - SSCC Length - 20
X Dim 0.018 Height 1.126 Width 2.830

Verification Report

Code Type: Code 128
 Overall Symbol Grade: 0.0 (F)
 Aperture: 4.419 px Relative Mode

Scan reflectance profile #0 analysis

Scan reflectance profile grade 0.0 (F)

Parameter	Value	Grade
Decode	Yes	4.0 (A)
Rmax	1.0000	N/A
Rmin	0.0314	4.0 (A)
Global Threshold	0.9686	N/A
Symbol Contrast	0.9686	4.0 (A)
Min. edge contrast	0.5804	4.0 (A)
Modulation	0.5992	2.0 (C)
Defects	0.0324	4.0 (A)
Decodability	0.0623	0.0 (F)
Quiet zone	-1.2751	4.0 (A)

Resources - Links are case sensitive

GS1 Specifications For SSCC Labels - 2018
www.gs1.org/docs/barcodes/GS1_General_Specifications.pdf

Laymans Guide to Barcode Verification
www.scanalyst.com/resources/LaymansGuidetoANSI_rev_2002.pdf

Additional helpful information www.Goodbarcodes.com

SCANALYST 3 inspection processes are based on current AIDC standards such as ISO ISO/IEC 15415, ISO/IEC 15416, ISO/IEC 15426-1, ISO/IEC 15426-2, ISO/IEC TR 29158 (AIM DPM) and GS1 General Specifications for multiple field data carriers.
 Copyright Automatic Identification Systems, Inc. 1993-2018, a U.S.A. based veteran owned company www.scanalyst.com



Scan For Help





SCANALYST 3 Report



Inspected Image

This barcode could not be read or verified. The SSCC barcode data had to be key entered

*The Overall Grade Is The Average Of 10 Scan Profile Grades

Barcode Print Quality-Overall
Barcode Data Content
Barcode Physical Detail

Unreadable
00006757167008725083
Physical Details are not available when the SSCC is manually entered

Scan Profile Details are not available when the SSCC is manually entered

Resources - Links are case sensitive

GS1 Specifications For SSCC Labels - 2018
www.gs1.org/docs/barcodes/GS1_General_Specifications.pdf

Laymans Guide to Barcode Verification
www.scanalyst.com/resources/LaymansGuidetoANSI_rev_2002.pdf

Additional helpful information www.Goodbarcodes.com

SCANALYST 3 inspection processes are based on current AIDC standards such as ISO ISO/IEC 15415, ISO/IEC 15416, ISO/IEC 15426-1, ISO/IEC 15426-2, ISO/IEC TR 29158 (AIM DPM) and GS1 General Specifications for multiple field data carriers.
Copyright Automatic Identification Systems, Inc. 1993-2018, a U.S.A. based veteran owned company www.scanalyst.com



[Scan For Help](#)





SCANALYST 3 Report



Inspected Image

*The Overall Grade Is The Average Of 10 Scan Profile Grades

Barcode Print Quality-Overall
Barcode Data Content
Barcode Physical Detail

1.4 (D)
00006757167020488546
AI - 00 Title - SSCC Length - 20
X Dim 0.018 Height 1.109 Width 2.786

Verification Report

Code Type: Code 128
 Overall Symbol Grade: 1.4 (D)
 Aperture: 4.428 px Relative Mode

Scan reflectance profile #0 analysis

Scan reflectance profile grade 2.0 (C)

Parameter	Value	Grade
Decode	Yes	4.0 (A)
Rmax	0.6235	N/A
Rmin	0.0157	4.0 (A)
Global Threshold	0.6078	N/A
Symbol Contrast	0.6078	3.0 (B)
Min. edge contrast	0.3490	4.0 (A)
Modulation	0.5742	2.0 (C)
Defects	0.1613	3.0 (B)
Decodability	0.8570	4.0 (A)
Quiet zone	-1.2887	4.0 (A)

Resources - Links are case sensitive

GS1 Specifications For SSCC Labels - 2018
www.gs1.org/docs/barcodes/GS1_General_Specifications.pdf

Laymans Guide to Barcode Verification
www.scanalyst.com/resources/LaymansGuidetoANSI_rev_2002.pdf

Additional helpful information www.Goodbarcodes.com

SCANALYST 3 inspection processes are based on current AIDC standards such as ISO ISO/IEC 15415, ISO/IEC 15416, ISO/IEC 15426-1, ISO/IEC 15426-2, ISO/IEC TR 29158 (AIM DPM) and GS1 General Specifications for multiple field data carriers.
 Copyright Automatic Identification Systems, Inc. 1993-2018, a U.S.A. based veteran owned company www.scanalyst.com



Scan For Help





SCANALYST 3 Report



Inspected Image

This barcode could not be read or verified. The SSCC barcode data had to be key entered

*The Overall Grade Is The Average Of 10 Scan Profile Grades

Barcode Print Quality-Overall
Barcode Data Content
Barcode Physical Detail

Unreadable
00006757167008894499
Physical Details are not available when the SSCC is manually entered

Scan Profile Details are not available when the SSCC is manually entered

Resources - Links are case sensitive

GS1 Specifications For SSCC Labels - 2018
www.gs1.org/docs/barcodes/GS1_General_Specifications.pdf

Laymans Guide to Barcode Verification
www.scanalyst.com/resources/LaymansGuidetoANSI_rev_2002.pdf

Additional helpful information www.Goodbarcodes.com

SCANALYST 3 inspection processes are based on current AIDC standards such as ISO ISO/IEC 15415, ISO/IEC 15416, ISO/IEC 15426-1, ISO/IEC 15426-2, ISO/IEC TR 29158 (AIM DPM) and GS1 General Specifications for multiple field data carriers.
Copyright Automatic Identification Systems, Inc. 1993-2018, a U.S.A. based veteran owned company www.scanalyst.com



[Scan For Help](#)





SCANALYST 3 Report



Inspected Image

This barcode could not be read or verified. The SSCC barcode data had to be key entered

*The Overall Grade Is The Average Of 10 Scan Profile Grades

Barcode Print Quality-Overall
Barcode Data Content
Barcode Physical Detail

Unreadable
00006757167008825677
Physical Details are not available when the SSCC is manually entered

Scan Profile Details are not available when the SSCC is manually entered

Resources - Links are case sensitive

GS1 Specifications For SSCC Labels - 2018
www.gs1.org/docs/barcodes/GS1_General_Specifications.pdf

Laymans Guide to Barcode Verification
www.scanalyst.com/resources/LaymansGuidetoANSI_rev_2002.pdf

Additional helpful information www.Goodbarcodes.com

SCANALYST 3 inspection processes are based on current AIDC standards such as ISO ISO/IEC 15415, ISO/IEC 15416, ISO/IEC 15426-1, ISO/IEC 15426-2, ISO/IEC TR 29158 (AIM DPM) and GS1 General Specifications for multiple field data carriers.
Copyright Automatic Identification Systems, Inc. 1993-2018, a U.S.A. based veteran owned company www.scanalyst.com



[Scan For Help](#)





SCANALYST 3 Report



Inspected Image

This barcode could not be read or verified. The SSCC barcode data had to be key entered

*The Overall Grade Is The Average Of 10 Scan Profile Grades

Barcode Print Quality-Overall
Barcode Data Content
Barcode Physical Detail

Unreadable
00006757167008848997
Physical Details are not available when the SSCC is manually entered

Scan Profile Details are not available when the SSCC is manually entered

Resources - Links are case sensitive

GS1 Specifications For SSCC Labels - 2018
www.gs1.org/docs/barcodes/GS1_General_Specifications.pdf

Laymans Guide to Barcode Verification
www.scanalyst.com/resources/LaymansGuidetoANSI_rev_2002.pdf

Additional helpful information www.Goodbarcodes.com

SCANALYST 3 inspection processes are based on current AIDC standards such as ISO ISO/IEC 15415, ISO/IEC 15416, ISO/IEC 15426-1, ISO/IEC 15426-2, ISO/IEC TR 29158 (AIM DPM) and GS1 General Specifications for multiple field data carriers.
Copyright Automatic Identification Systems, Inc. 1993-2018, a U.S.A. based veteran owned company www.scanalyst.com

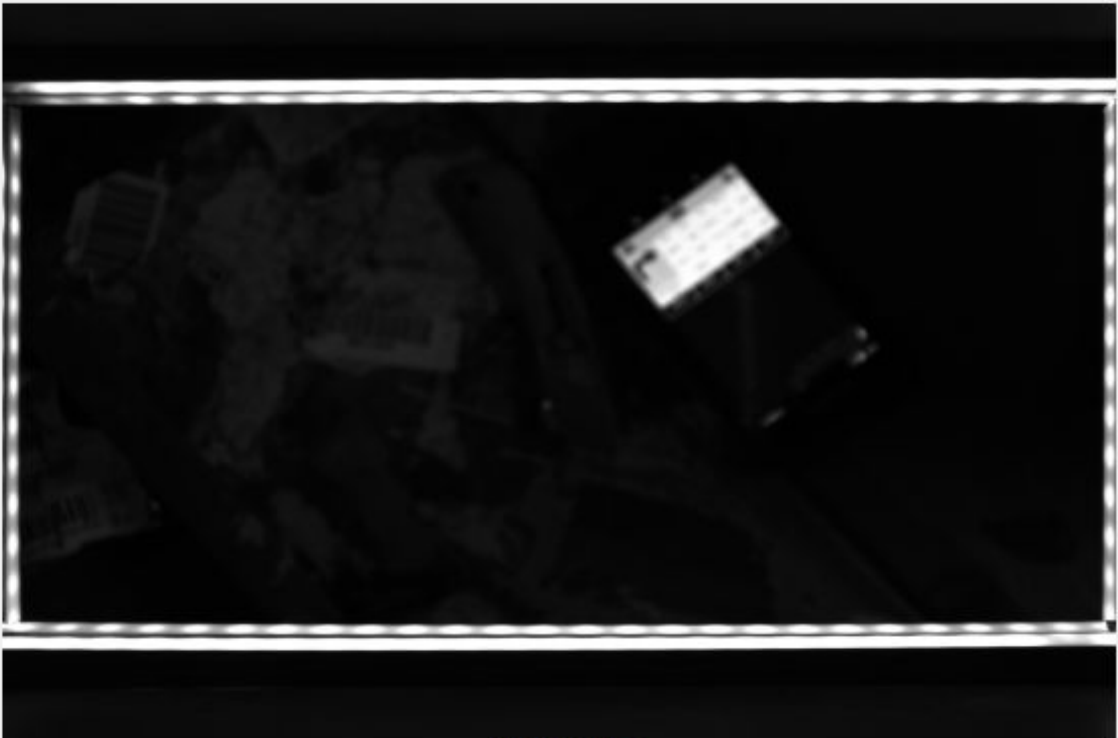


[Scan For Help](#)





SCANALYST 3 Report



Inspected Image

This barcode could not be read or verified. The SSCC barcode data had to be key entered

*The Overall Grade Is The Average Of 10 Scan Profile Grades

Barcode Print Quality-Overall
Barcode Data Content
Barcode Physical Detail

Unreadable
00006757167008849116
Physical Details are not available when the SSCC is manually entered

Scan Profile Details are not available when the SSCC is manually entered

Resources - Links are case sensitive

GS1 Specifications For SSCC Labels - 2018
www.gs1.org/docs/barcodes/GS1_General_Specifications.pdf

Laymans Guide to Barcode Verification
www.scanalyst.com/resources/LaymansGuidetoANSI_rev_2002.pdf

Additional helpful information www.Goodbarcodes.com

SCANALYST 3 inspection processes are based on current AIDC standards such as ISO ISO/IEC 15415, ISO/IEC 15416, ISO/IEC 15426-1, ISO/IEC 15426-2, ISO/IEC TR 29158 (AIM DPM) and GS1 General Specifications for multiple field data carriers.
Copyright Automatic Identification Systems, Inc. 1993-2018, a U.S.A. based veteran owned company www.scanalyst.com



[Scan For Help](#)





SCANALYST 3 Report



Inspected Image

*The Overall Grade Is The Average Of 10 Scan Profile Grades

Barcode Print Quality-Overall
Barcode Data Content
Barcode Physical Detail

0.0 (F)
00006757167020564486
AI - 00 Title - SSCC Length - 20
X Dim 0.018 Height 1.107 Width 2.782

Verification Report

Code Type: Code 128
 Overall Symbol Grade: 0.0 (F)
 Aperture: 4.422 px Relative Mode

Scan reflectance profile #0 analysis

Scan reflectance profile grade 0.0 (F)

Parameter	Value	Grade
Decode	No	0.0 (F)
Rmax	0.9059	N/A
Rmin	0.0275	4.0 (A)
Global Threshold	0.8784	N/A
Symbol Contrast	0.8784	4.0 (A)
Min. edge contrast	0.2980	4.0 (A)
Modulation	0.3393	0.0 (F)
Defects	0.4375	0.0 (F)
Decodability	0.0000	0.0 (F)
Quiet zone	-1.2819	4.0 (A)

Resources - Links are case sensitive

- GS1 Specifications For SSCC Labels - 2018
www.gs1.org/docs/barcodes/GS1_General_Specifications.pdf
- Laymans Guide to Barcode Verification
www.scanalyst.com/resources/LaymansGuidetoANSI_rev_2002.pdf
- Additional helpful information www.Goodbarcodes.com

SCANALYST 3 inspection processes are based on current AIDC standards such as ISO ISO/IEC 15415, ISO/IEC 15416, ISO/IEC 15426-1, ISO/IEC 15426-2, ISO/IEC TR 29158 (AIM DPM) and GS1 General Specifications for multiple field data carriers.
 Copyright Automatic Identification Systems, Inc. 1993-2018, a U.S.A. based veteran owned company www.scanalyst.com



Scan For Help





SCANALYST 3 Report



Inspected Image

This barcode could not be read or verified. The SSCC barcode data had to be key entered

*The Overall Grade Is The Average Of 10 Scan Profile Grades

Barcode Print Quality-Overall
Barcode Data Content
Barcode Physical Detail

Unreadable
00006757167008905591
Physical Details are not available when the SSCC is manually entered

Scan Profile Details are not available when the SSCC is manually entered

Resources - Links are case sensitive

GS1 Specifications For SSCC Labels - 2018
www.gs1.org/docs/barcodes/GS1_General_Specifications.pdf

Laymans Guide to Barcode Verification
www.scanalyst.com/resources/LaymansGuidetoANSI_rev_2002.pdf

Additional helpful information www.Goodbarcodes.com

SCANALYST 3 inspection processes are based on current AIDC standards such as ISO ISO/IEC 15415, ISO/IEC 15416, ISO/IEC 15426-1, ISO/IEC 15426-2, ISO/IEC TR 29158 (AIM DPM) and GS1 General Specifications for multiple field data carriers.
Copyright Automatic Identification Systems, Inc. 1993-2018, a U.S.A. based veteran owned company www.scanalyst.com



Scan For Help





SCANALYST 3 Report



Inspected Image

This barcode could not be read or verified. The SSCC barcode data had to be key entered

*The Overall Grade Is The Average Of 10 Scan Profile Grades

Barcode Print Quality-Overall
Barcode Data Content
Barcode Physical Detail

Unreadable
00006757167008851256
Physical Details are not available when the SSCC is manually entered

Scan Profile Details are not available when the SSCC is manually entered

Resources - Links are case sensitive

GS1 Specifications For SSCC Labels - 2018
www.gs1.org/docs/barcodes/GS1_General_Specifications.pdf

Laymans Guide to Barcode Verification
www.scanalyst.com/resources/LaymansGuidetoANSI_rev_2002.pdf

Additional helpful information www.Goodbarcodes.com

SCANALYST 3 inspection processes are based on current AIDC standards such as ISO ISO/IEC 15415, ISO/IEC 15416, ISO/IEC 15426-1, ISO/IEC 15426-2, ISO/IEC TR 29158 (AIM DPM) and GS1 General Specifications for multiple field data carriers.
Copyright Automatic Identification Systems, Inc. 1993-2018, a U.S.A. based veteran owned company www.scanalyst.com



Scan For Help





SCANALYST 3 Report



Inspected Image

*The Overall Grade Is The Average Of 10 Scan Profile Grades

Barcode Print Quality-Overall
Barcode Data Content
Barcode Physical Detail

0.0 (F)
00006757166975540460 AI - 00 Title - SSCC Length - 20
X Dim 0.018 Height 1.102 Width 2.828

Verification Report

Code Type: Code 128
 Overall Symbol Grade: 0.0 (F)
 Aperture: 4.417 px Relative Mode

Scan reflectance profile #0 analysis

Scan reflectance profile grade 0.0 (F)

Parameter	Value	Grade
Decode	No	0.0 (F)
Rmax	1.0000	N/A
Rmin	0.0275	4.0 (A)
Global Threshold	0.9725	N/A
Symbol Contrast	0.9725	4.0 (A)
Min. edge contrast	0.1098	0.0 (F)
Modulation	0.1129	0.0 (F)
Defects	0.3508	0.0 (F)
Decodability	0.0000	0.0 (F)
Quiet zone	0.2029	0.0 (F)

Resources - Links are case sensitive

GS1 Specifications For SSCC Labels - 2018
www.gs1.org/docs/barcodes/GS1_General_Specifications.pdf

Laymans Guide to Barcode Verification
www.scanalyst.com/resources/LaymansGuidetoANSI_rev_2002.pdf

Additional helpful information www.Goodbarcodes.com

SCANALYST 3 inspection processes are based on current AIDC standards such as ISO ISO/IEC 15415, ISO/IEC 15416, ISO/IEC 15426-1, ISO/IEC 15426-2, ISO/IEC TR 29158 (AIM DPM) and GS1 General Specifications for multiple field data carriers.
 Copyright Automatic Identification Systems, Inc. 1993-2018, a U.S.A. based veteran owned company www.scanalyst.com



Scan For Help





SCANALYST 3 Report



Inspected Image

*The Overall Grade Is The Average Of 10 Scan Profile Grades

Barcode Print Quality-Overall
Barcode Data Content
Barcode Physical Detail

1.2 (D)		
00006757167020550694		
AI - 00	Title - SSCC	Length - 20
X Dim	Height	Width
0.018	1.127	2.843

Verification Report

Code Type: Code 128
 Overall Symbol Grade: 1.2 (D)
 Aperture: 4.448 px Relative Mode

Scan reflectance profile #0 analysis

Scan reflectance profile grade 1.0 (D)

Parameter	Value	Grade
Decode	Yes	4.0 (A)
Rmax	1.0000	N/A
Rmin	0.0392	4.0 (A)
Global Threshold	0.9608	N/A
Symbol Contrast	0.9608	4.0 (A)
Min. edge contrast	0.8314	4.0 (A)
Modulation	0.8653	4.0 (A)
Defects	0.2653	1.0 (D)
Decodability	0.8456	4.0 (A)
Quiet zone	-1.1275	4.0 (A)

Resources - Links are case sensitive

GS1 Specifications For SSCC Labels - 2018
www.gs1.org/docs/barcodes/GS1_General_Specifications.pdf

Laymans Guide to Barcode Verification
www.scanalyst.com/resources/LaymansGuidetoANSI_rev_2002.pdf

Additional helpful information www.Goodbarcodes.com

SCANALYST 3 inspection processes are based on current AIDC standards such as ISO ISO/IEC 15415, ISO/IEC 15416, ISO/IEC 15426-1, ISO/IEC 15426-2, ISO/IEC TR 29158 (AIM DPM) and GS1 General Specifications for multiple field data carriers.
 Copyright Automatic Identification Systems, Inc. 1993-2018, a U.S.A. based veteran owned company www.scanalyst.com

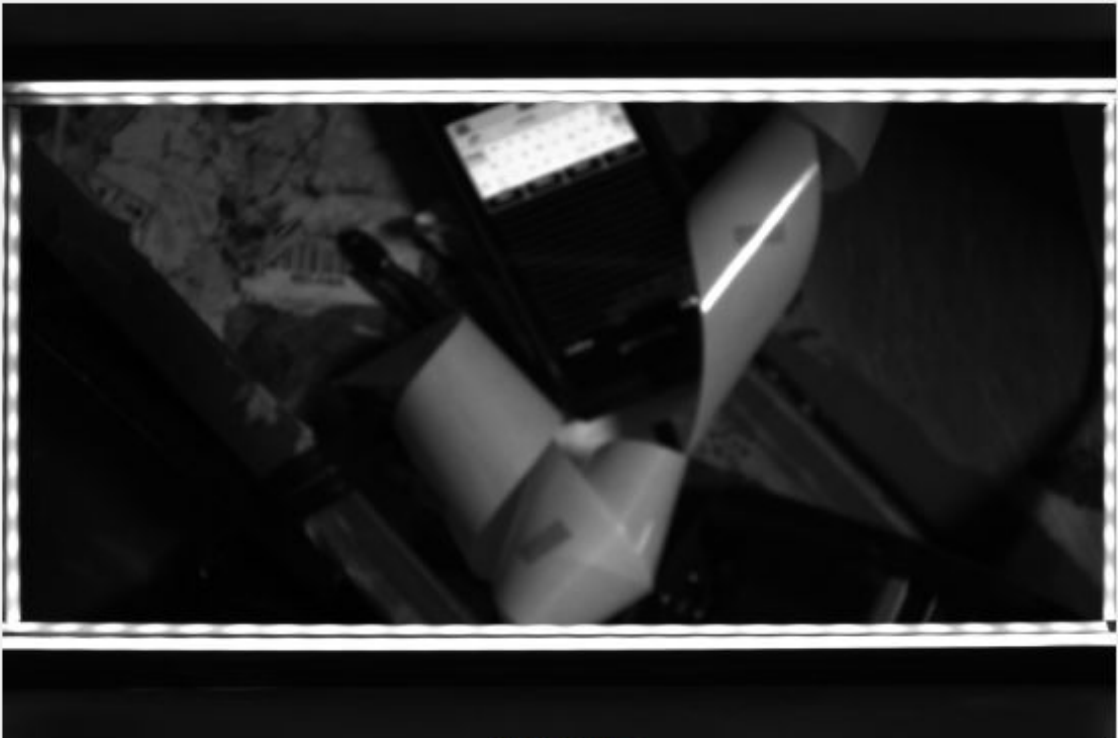


[Scan For Help](#)





SCANALYST 3 Report



Inspected Image

This barcode could not be read or verified. The SSCC barcode data had to be key entered

*The Overall Grade Is The Average Of 10 Scan Profile Grades

Barcode Print Quality-Overall
Barcode Data Content
Barcode Physical Detail

Unreadable
00006757167025462473
Physical Details are not available when the SSCC is manually entered

Scan Profile Details are not available when the SSCC is manually entered

Resources - Links are case sensitive

GS1 Specifications For SSCC Labels - 2018
www.gs1.org/docs/barcodes/GS1_General_Specifications.pdf

Laymans Guide to Barcode Verification
www.scanalyst.com/resources/LaymansGuidetoANSI_rev_2002.pdf

Additional helpful information www.Goodbarcodes.com

SCANALYST 3 inspection processes are based on current AIDC standards such as ISO ISO/IEC 15415, ISO/IEC 15416, ISO/IEC 15426-1, ISO/IEC 15426-2, ISO/IEC TR 29158 (AIM DPM) and GS1 General Specifications for multiple field data carriers.
Copyright Automatic Identification Systems, Inc. 1993-2018, a U.S.A. based veteran owned company www.scanalyst.com



[Scan For Help](#)





SCANALYST 3 Report



Inspected Image

This barcode could not be read or verified. The SSCC barcode data had to be key entered

*The Overall Grade Is The Average Of 10 Scan Profile Grades

Barcode Print Quality-Overall
Barcode Data Content
Barcode Physical Detail

Unreadable
00006757167020537206
Physical Details are not available when the SSCC is manually entered

Scan Profile Details are not available when the SSCC is manually entered

Resources - Links are case sensitive

GS1 Specifications For SSCC Labels - 2018
www.gs1.org/docs/barcodes/GS1_General_Specifications.pdf

Laymans Guide to Barcode Verification
www.scanalyst.com/resources/LaymansGuidetoANSI_rev_2002.pdf

Additional helpful information www.Goodbarcodes.com

SCANALYST 3 inspection processes are based on current AIDC standards such as ISO ISO/IEC 15415, ISO/IEC 15416, ISO/IEC 15426-1, ISO/IEC 15426-2, ISO/IEC TR 29158 (AIM DPM) and GS1 General Specifications for multiple field data carriers.
Copyright Automatic Identification Systems, Inc. 1993-2018, a U.S.A. based veteran owned company www.scanalyst.com



[Scan For Help](#)





SCANALYST 3 Report



Inspected Image

This barcode could not be read or verified. The SSCC barcode data had to be key entered

*The Overall Grade Is The Average Of 10 Scan Profile Grades

Barcode Print Quality-Overall
Barcode Data Content
Barcode Physical Detail

Unreadable
00006757167021165699
Physical Details are not available when the SSCC is manually entered

Scan Profile Details are not available when the SSCC is manually entered

Resources - Links are case sensitive

GS1 Specifications For SSCC Labels - 2018
www.gs1.org/docs/barcodes/GS1_General_Specifications.pdf

Laymans Guide to Barcode Verification
www.scanalyst.com/resources/LaymansGuidetoANSI_rev_2002.pdf

Additional helpful information www.Goodbarcodes.com

SCANALYST 3 inspection processes are based on current AIDC standards such as ISO ISO/IEC 15415, ISO/IEC 15416, ISO/IEC 15426-1, ISO/IEC 15426-2, ISO/IEC TR 29158 (AIM DPM) and GS1 General Specifications for multiple field data carriers.
Copyright Automatic Identification Systems, Inc. 1993-2018, a U.S.A. based veteran owned company www.scanalyst.com



[Scan For Help](#)

