



SCANALYST 3 Report



Inspected Image

The barcode height is supposed to be 1.25 in. high. This barcode is out of spec which impacts the ability to scan it and handle the package automatically.

*The Overall Grade Is The Average Of 10 Scan Profile Grades

- Barcode Print Quality-Overall**
- Barcode Data Content**
- Barcode Physical Detail**

| | | |
|----------------------|--------------|-------------|
| 0.0 (F) | | |
| 00006757166975538337 | | |
| AI - 00 | Title - SSCC | Length - 20 |
| X Dim | Height | Width |
| 0.018 | 0.288 | 2.786 |

Verification Report

Code Type: Code 128
 Overall Symbol Grade: 0.0 (F)
 Aperture: 4.441 px Relative Mode

Scan reflectance profile #0 analysis

Scan reflectance profile grade 0.0 (F)

| Parameter | Value | Grade |
|--------------------|---------|---------|
| Decode | No | 0.0 (F) |
| Rmax | 1.0000 | N/A |
| Rmin | 0.0353 | 4.0 (A) |
| Global Threshold | 0.9647 | N/A |
| Symbol Contrast | 0.9647 | 4.0 (A) |
| Min. edge contrast | 0.2000 | 4.0 (A) |
| Modulation | 0.2073 | 0.0 (F) |
| Defects | 0.3171 | 0.0 (F) |
| Decodability | 0.0000 | 0.0 (F) |
| Quiet zone | -1.2923 | 4.0 (A) |

Resources - Links are case sensitive

- GS1 Specifications For SSCC Labels - 2018
www.gs1.org/docs/barcodes/GS1_General_Specifications.pdf
- Laymans Guide to Barcode Verification
www.scanalyst.com/resources/LaymansGuidetoANSI_rev_2002.pdf
- Additional helpful information www.Goodbarcodes.com

SCANALYST 3 inspection processes are based on current AIDC standards such as ISO ISO/IEC 15415, ISO/IEC 15416, ISO/IEC 15426-1, ISO/IEC 15426-2, ISO/IEC TR 29158 (AIM DPM) and GS1 General Specifications for multiple field data carriers.
 Copyright Automatic Identification Systems, Inc. 1993-2018, a U.S.A. based veteran owned company www.scanalyst.com



Scan For Help





SCANALYST 3 Report



Inspected Image

*The Overall Grade Is The Average Of 10 Scan Profile Grades

| |
|--------------------------------------|
| Barcode Print Quality-Overall |
| Barcode Data Content |
| Barcode Physical Detail |

| |
|--------------------------------------|
| 0.2 (F) |
| 00006757166975530553 |
| AI - 00 Title - SSCC Length - 20 |
| X Dim 0.018 Height 1.100 Width 2.781 |

Verification Report

Code Type: Code 128
 Overall Symbol Grade: 0.2 (F)
 Aperture: 4.431 px Relative Mode

Scan reflectance profile #0 analysis

Scan reflectance profile grade 0.0 (F)

| Parameter | Value | Grade |
|--------------------|---------|---------|
| Decode | No | 0.0 (F) |
| Rmax | 0.8902 | N/A |
| Rmin | 0.0196 | 4.0 (A) |
| Global Threshold | 0.8706 | N/A |
| Symbol Contrast | 0.8706 | 4.0 (A) |
| Min. edge contrast | 0.0510 | 0.0 (F) |
| Modulation | 0.0586 | 0.0 (F) |
| Defects | 0.4820 | 0.0 (F) |
| Decodability | 0.0000 | 0.0 (F) |
| Quiet zone | -1.2991 | 4.0 (A) |

Resources - Links are case sensitive

GS1 Specifications For SSCC Labels - 2018
www.gs1.org/docs/barcodes/GS1_General_Specifications.pdf

Laymans Guide to Barcode Verification
www.scanalyst.com/resources/LaymansGuidetoANSI_rev_2002.pdf

Additional helpful information www.Goodbarcodes.com

SCANALYST 3 inspection processes are based on current AIDC standards such as ISO ISO/IEC 15415, ISO/IEC 15416, ISO/IEC 15426-1, ISO/IEC 15426-2, ISO/IEC TR 29158 (AIM DPM) and GS1 General Specifications for multiple field data carriers.
 Copyright Automatic Identification Systems, Inc. 1993-2018, a U.S.A. based veteran owned company www.scanalyst.com



Scan For Help





SCANALYST 3 Report



Inspected Image

This barcode could not be read or verified. The SSCC barcode data had to be key entered

*The Overall Grade Is The Average Of 10 Scan Profile Grades

| |
|--------------------------------------|
| Barcode Print Quality-Overall |
| Barcode Data Content |
| Barcode Physical Detail |

| |
|--|
| Unreadable |
| 00006757167011625349 |
| Physical Details are not available when the SSCC is manually entered |

Scan Profile Details are not available when the SSCC is manually entered

Resources - Links are case sensitive

GS1 Specifications For SSCC Labels - 2018
www.gs1.org/docs/barcodes/GS1_General_Specifications.pdf

Laymans Guide to Barcode Verification
www.scanalyst.com/resources/LaymansGuidetoANSI_rev_2002.pdf

Additional helpful information www.Goodbarcodes.com

SCANALYST 3 inspection processes are based on current AIDC standards such as ISO ISO/IEC 15415, ISO/IEC 15416, ISO/IEC 15426-1, ISO/IEC 15426-2, ISO/IEC TR 29158 (AIM DPM) and GS1 General Specifications for multiple field data carriers.
Copyright Automatic Identification Systems, Inc. 1993-2018, a U.S.A. based veteran owned company www.scanalyst.com



Scan For Help





SCANALYST 3 Report



Inspected Image

This barcode could not be read or verified. The SSCC barcode data had to be key entered

*The Overall Grade Is The Average Of 10 Scan Profile Grades

| |
|--------------------------------------|
| Barcode Print Quality-Overall |
| Barcode Data Content |
| Barcode Physical Detail |

| |
|--|
| Unreadable |
| 00006757167008847334 |
| Physical Details are not available when the SSCC is manually entered |

Scan Profile Details are not available when the SSCC is manually entered

Resources - Links are case sensitive

GS1 Specifications For SSCC Labels - 2018
www.gs1.org/docs/barcodes/GS1_General_Specifications.pdf

Laymans Guide to Barcode Verification
www.scanalyst.com/resources/LaymansGuidetoANSI_rev_2002.pdf

Additional helpful information www.Goodbarcodes.com

SCANALYST 3 inspection processes are based on current AIDC standards such as ISO ISO/IEC 15415, ISO/IEC 15416, ISO/IEC 15426-1, ISO/IEC 15426-2, ISO/IEC TR 29158 (AIM DPM) and GS1 General Specifications for multiple field data carriers.
Copyright Automatic Identification Systems, Inc. 1993-2018, a U.S.A. based veteran owned company www.scanalyst.com



Scan For Help





SCANALYST 3 Report



Inspected Image

*The Overall Grade Is The Average Of 10 Scan Profile Grades

| | |
|-------------------------------|---|
| Barcode Print Quality-Overall | - |
| Barcode Data Content | - |
| Barcode Physical Detail | - |

Resources - Links are case sensitive

GS1 Specifications For SSCC Labels - 2018
www.gs1.org/docs/barcodes/GS1_General_Specifications.pdf

Laymans Guide to Barcode Verification
www.scanalyst.com/resources/LaymansGuidetoANSI_rev_2002.pdf

Additional helpful information www.Goodbarcodes.com

SCANALYST 3 inspection processes are based on current AIDC standards such as ISO ISO/IEC 15415, ISO/IEC 15416, ISO/IEC 15426-1, ISO/IEC 15426-2, ISO/IEC TR 29158 (AIM DPM) and GS1 General Specifications for multiple field data carriers.
Copyright Automatic Identification Systems, Inc. 1993-2018, a U.S.A. based veteran owned company www.scanalyst.com



Scan For Help





SCANALYST 3 Report



Inspected Image

This barcode could not be read or verified. The SSCC barcode data had to be key entered

*The Overall Grade Is The Average Of 10 Scan Profile Grades

| |
|--------------------------------------|
| Barcode Print Quality-Overall |
| Barcode Data Content |
| Barcode Physical Detail |

| |
|--|
| Unreadable |
| 00006757167011645156 |
| Physical Details are not available when the SSCC is manually entered |

Scan Profile Details are not available when the SSCC is manually entered

Resources - Links are case sensitive

GS1 Specifications For SSCC Labels - 2018
www.gs1.org/docs/barcodes/GS1_General_Specifications.pdf

Laymans Guide to Barcode Verification
www.scanalyst.com/resources/LaymansGuidetoANSI_rev_2002.pdf

Additional helpful information www.Goodbarcodes.com

SCANALYST 3 inspection processes are based on current AIDC standards such as ISO ISO/IEC 15415, ISO/IEC 15416, ISO/IEC 15426-1, ISO/IEC 15426-2, ISO/IEC TR 29158 (AIM DPM) and GS1 General Specifications for multiple field data carriers.
Copyright Automatic Identification Systems, Inc. 1993-2018, a U.S.A. based veteran owned company www.scanalyst.com



Scan For Help





SCANALYST 3 Report



Inspected Image

This barcode could not be read or verified. The SSCC barcode data had to be key entered

*The Overall Grade Is The Average Of 10 Scan Profile Grades

| |
|--------------------------------------|
| Barcode Print Quality-Overall |
| Barcode Data Content |
| Barcode Physical Detail |

| |
|--|
| Unreadable |
| 00006757167011646030 |
| Physical Details are not available when the SSCC is manually entered |

Scan Profile Details are not available when the SSCC is manually entered

Resources - Links are case sensitive

GS1 Specifications For SSCC Labels - 2018
www.gs1.org/docs/barcodes/GS1_General_Specifications.pdf

Laymans Guide to Barcode Verification
www.scanalyst.com/resources/LaymansGuidetoANSI_rev_2002.pdf

Additional helpful information www.Goodbarcodes.com

SCANALYST 3 inspection processes are based on current AIDC standards such as ISO ISO/IEC 15415, ISO/IEC 15416, ISO/IEC 15426-1, ISO/IEC 15426-2, ISO/IEC TR 29158 (AIM DPM) and GS1 General Specifications for multiple field data carriers.
Copyright Automatic Identification Systems, Inc. 1993-2018, a U.S.A. based veteran owned company www.scanalyst.com



Scan For Help





SCANALYST 3 Report



Inspected Image

*The Overall Grade Is The Average Of 10 Scan Profile Grades

- Barcode Print Quality-Overall
- Barcode Data Content
- Barcode Physical Detail

| | | |
|----------------------|--------------|-------------|
| 0.4 (F) | | |
| 00006757167024991455 | | |
| AI - 00 | Title - SSCC | Length - 20 |
| X Dim | Height | Width |
| 0.018 | 1.106 | 2.791 |

Verification Report

Code Type: Code 128
 Overall Symbol Grade: 0.4 (F)
 Aperture: 4.343 px Relative Mode

Scan reflectance profile #0 analysis

Scan reflectance profile grade 2.0 (C)

| Parameter | Value | Grade |
|--------------------|---------|---------|
| Decode | Yes | 4.0 (A) |
| Rmax | 0.8078 | N/A |
| Rmin | 0.0196 | 4.0 (A) |
| Global Threshold | 0.7882 | N/A |
| Symbol Contrast | 0.7882 | 4.0 (A) |
| Min. edge contrast | 0.4235 | 4.0 (A) |
| Modulation | 0.5373 | 2.0 (C) |
| Defects | 0.1144 | 4.0 (A) |
| Decodability | 0.4742 | 2.0 (C) |
| Quiet zone | -1.2926 | 4.0 (A) |

Resources - Links are case sensitive

GS1 Specifications For SSCC Labels - 2018
www.gs1.org/docs/barcodes/GS1_General_Specifications.pdf

Laymans Guide to Barcode Verification
www.scanalyst.com/resources/LaymansGuidetoANSI_rev_2002.pdf

Additional helpful information www.Goodbarcodes.com

SCANALYST 3 inspection processes are based on current AIDC standards such as ISO ISO/IEC 15415, ISO/IEC 15416, ISO/IEC 15426-1, ISO/IEC 15426-2, ISO/IEC TR 29158 (AIM DPM) and GS1 General Specifications for multiple field data carriers.
 Copyright Automatic Identification Systems, Inc. 1993-2018, a U.S.A. based veteran owned company www.scanalyst.com

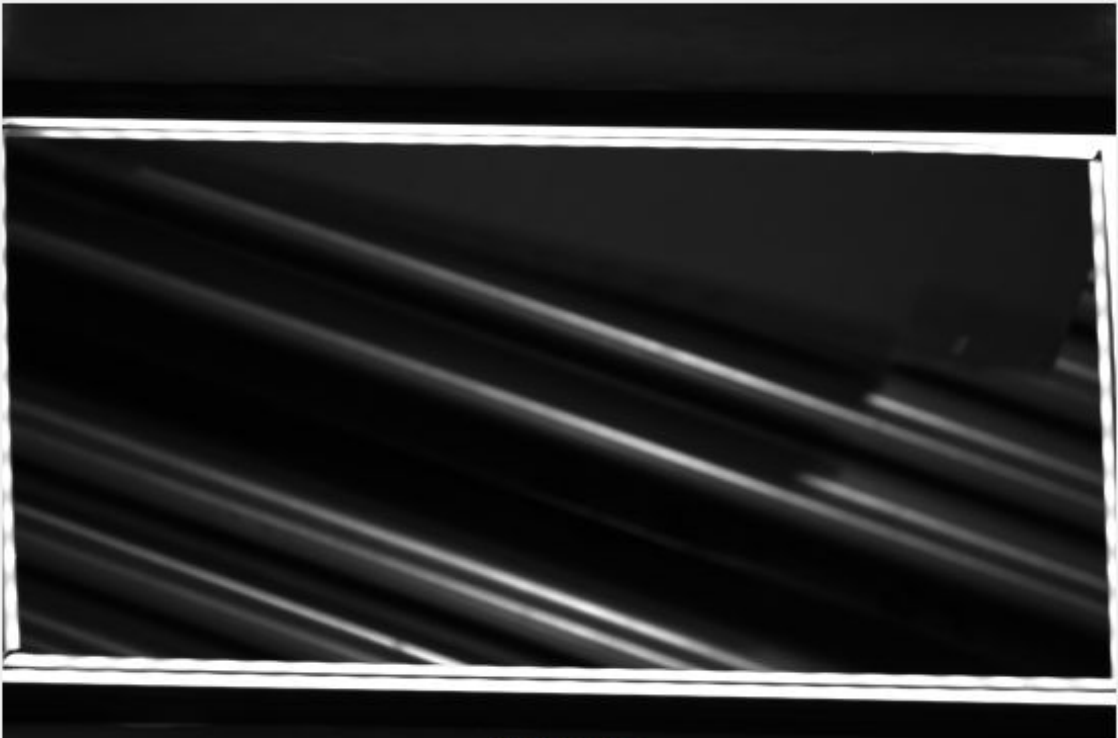


Scan For Help





SCANALYST 3 Report



Inspected Image

This barcode could not be read or verified. The SSCC barcode data had to be key entered

*The Overall Grade Is The Average Of 10 Scan Profile Grades

| |
|--------------------------------------|
| Barcode Print Quality-Overall |
| Barcode Data Content |
| Barcode Physical Detail |

| |
|--|
| Unreadable |
| 00006757167024916625 |
| Physical Details are not available when the SSCC is manually entered |

Scan Profile Details are not available when the SSCC is manually entered

Resources - Links are case sensitive

GS1 Specifications For SSCC Labels - 2018
www.gs1.org/docs/barcodes/GS1_General_Specifications.pdf

Laymans Guide to Barcode Verification
www.scanalyst.com/resources/LaymansGuidetoANSI_rev_2002.pdf

Additional helpful information www.Goodbarcodes.com

SCANALYST 3 inspection processes are based on current AIDC standards such as ISO ISO/IEC 15415, ISO/IEC 15416, ISO/IEC 15426-1, ISO/IEC 15426-2, ISO/IEC TR 29158 (AIM DPM) and GS1 General Specifications for multiple field data carriers.
Copyright Automatic Identification Systems, Inc. 1993-2018, a U.S.A. based veteran owned company www.scanalyst.com



[Scan For Help](#)





SCANALYST 3 Report



Inspected Image

The barcode height is supposed to be 1.25 in. high. This barcode is out of spec which impacts the ability to scan it and handle the package automatically.

*The Overall Grade Is The Average Of 10 Scan Profile Grades

| |
|--------------------------------------|
| Barcode Print Quality-Overall |
| Barcode Data Content |
| Barcode Physical Detail |

| |
|--|
| 0.4 (F) |
| 00006757167008845460 AI - 00 Title - SSCC Length - 20 |
| X Dim 0.017 Height 0.960 Width 2.713 |

Verification Report

Code Type: Code 128
 Overall Symbol Grade: 0.4 (F)
 Aperture: 4.221 px Relative Mode

Scan reflectance profile #0 analysis

Scan reflectance profile grade 3.0 (B)

| Parameter | Value | Grade |
|--------------------|---------|---------|
| Decode | Yes | 4.0 (A) |
| Rmax | 1.0000 | N/A |
| Rmin | 0.0392 | 4.0 (A) |
| Global Threshold | 0.9608 | N/A |
| Symbol Contrast | 0.9608 | 4.0 (A) |
| Min. edge contrast | 0.5765 | 4.0 (A) |
| Modulation | 0.6000 | 3.0 (B) |
| Defects | 0.0735 | 4.0 (A) |
| Decodability | 0.8304 | 4.0 (A) |
| Quiet zone | -1.3257 | 4.0 (A) |

Resources - Links are case sensitive

GS1 Specifications For SSCC Labels - 2018
www.gs1.org/docs/barcodes/GS1_General_Specifications.pdf

Laymans Guide to Barcode Verification
www.scanalyst.com/resources/LaymansGuidetoANSI_rev_2002.pdf

Additional helpful information www.Goodbarcodes.com

SCANALYST 3 inspection processes are based on current AIDC standards such as ISO ISO/IEC 15415, ISO/IEC 15416, ISO/IEC 15426-1, ISO/IEC 15426-2, ISO/IEC TR 29158 (AIM DPM) and GS1 General Specifications for multiple field data carriers.
 Copyright Automatic Identification Systems, Inc. 1993-2018, a U.S.A. based veteran owned company www.scanalyst.com



Scan For Help





SCANALYST 3 Report



Inspected Image

*The Overall Grade Is The Average Of 10 Scan Profile Grades

| |
|--------------------------------------|
| Barcode Print Quality-Overall |
| Barcode Data Content |
| Barcode Physical Detail |

| |
|--|
| 0.0 (F) |
| 00006757167008803385 AI - 00 Title - SSCC Length - 20 |
| X Dim 0.018 Height 1.087 Width 2.775 |

Verification Report

Code Type: Code 128
 Overall Symbol Grade: 0.0 (F)
 Aperture: 4.316 px Relative Mode

Scan reflectance profile #0 analysis

Scan reflectance profile grade 0.0 (F)

| Parameter | Value | Grade |
|--------------------|---------|---------|
| Decode | Yes | 4.0 (A) |
| Rmax | 1.0000 | N/A |
| Rmin | 0.0314 | 4.0 (A) |
| Global Threshold | 0.9686 | N/A |
| Symbol Contrast | 0.9686 | 4.0 (A) |
| Min. edge contrast | 0.6118 | 4.0 (A) |
| Modulation | 0.6316 | 3.0 (B) |
| Defects | 0.1093 | 4.0 (A) |
| Decodability | 0.0509 | 0.0 (F) |
| Quiet zone | -1.2711 | 4.0 (A) |

Resources - Links are case sensitive

GS1 Specifications For SSCC Labels - 2018
www.gs1.org/docs/barcodes/GS1_General_Specifications.pdf

Laymans Guide to Barcode Verification
www.scanalyst.com/resources/LaymansGuidetoANSI_rev_2002.pdf

Additional helpful information www.Goodbarcodes.com

SCANALYST 3 inspection processes are based on current AIDC standards such as ISO ISO/IEC 15415, ISO/IEC 15416, ISO/IEC 15426-1, ISO/IEC 15426-2, ISO/IEC TR 29158 (AIM DPM) and GS1 General Specifications for multiple field data carriers.
 Copyright Automatic Identification Systems, Inc. 1993-2018, a U.S.A. based veteran owned company www.scanalyst.com



Scan For Help



SCANALYST 3 Report



Inspected Image

This barcode could not be read or verified. The SSCC barcode data had to be key entered

*The Overall Grade Is The Average Of 10 Scan Profile Grades

| |
|--------------------------------------|
| Barcode Print Quality-Overall |
| Barcode Data Content |
| Barcode Physical Detail |

| |
|--|
| Unreadable |
| 00006757167011674668 |
| Physical Details are not available when the SSCC is manually entered |

Scan Profile Details are not available when the SSCC is manually entered

Resources - Links are case sensitive

GS1 Specifications For SSCC Labels - 2018
www.gs1.org/docs/barcodes/GS1_General_Specifications.pdf

Laymans Guide to Barcode Verification
www.scanalyst.com/resources/LaymansGuidetoANSI_rev_2002.pdf

Additional helpful information www.Goodbarcodes.com

SCANALYST 3 inspection processes are based on current AIDC standards such as ISO ISO/IEC 15415, ISO/IEC 15416, ISO/IEC 15426-1, ISO/IEC 15426-2, ISO/IEC TR 29158 (AIM DPM) and GS1 General Specifications for multiple field data carriers.
Copyright Automatic Identification Systems, Inc. 1993-2018, a U.S.A. based veteran owned company www.scanalyst.com



Scan For Help





SCANALYST 3 Report



Inspected Image

This barcode could not be read or verified. The SSCC barcode data had to be key entered

*The Overall Grade Is The Average Of 10 Scan Profile Grades

| |
|--------------------------------------|
| Barcode Print Quality-Overall |
| Barcode Data Content |
| Barcode Physical Detail |

| |
|--|
| Unreadable |
| 00006757167011663655 |
| Physical Details are not available when the SSCC is manually entered |

Scan Profile Details are not available when the SSCC is manually entered

Resources - Links are case sensitive

GS1 Specifications For SSCC Labels - 2018
www.gs1.org/docs/barcodes/GS1_General_Specifications.pdf

Laymans Guide to Barcode Verification
www.scanalyst.com/resources/LaymansGuidetoANSI_rev_2002.pdf

Additional helpful information www.Goodbarcodes.com

SCANALYST 3 inspection processes are based on current AIDC standards such as ISO ISO/IEC 15415, ISO/IEC 15416, ISO/IEC 15426-1, ISO/IEC 15426-2, ISO/IEC TR 29158 (AIM DPM) and GS1 General Specifications for multiple field data carriers.
Copyright Automatic Identification Systems, Inc. 1993-2018, a U.S.A. based veteran owned company www.scanalyst.com



Scan For Help





SCANALYST 3 Report



Inspected Image

This barcode could not be read or verified. The SSCC barcode data had to be key entered

*The Overall Grade Is The Average Of 10 Scan Profile Grades

| |
|--------------------------------------|
| Barcode Print Quality-Overall |
| Barcode Data Content |
| Barcode Physical Detail |

| |
|--|
| Unreadable |
| 00006757167011633733 |
| Physical Details are not available when the SSCC is manually entered |

Scan Profile Details are not available when the SSCC is manually entered

Resources - Links are case sensitive

GS1 Specifications For SSCC Labels - 2018
www.gs1.org/docs/barcodes/GS1_General_Specifications.pdf

Laymans Guide to Barcode Verification
www.scanalyst.com/resources/LaymansGuidetoANSI_rev_2002.pdf

Additional helpful information www.Goodbarcodes.com

SCANALYST 3 inspection processes are based on current AIDC standards such as ISO ISO/IEC 15415, ISO/IEC 15416, ISO/IEC 15426-1, ISO/IEC 15426-2, ISO/IEC TR 29158 (AIM DPM) and GS1 General Specifications for multiple field data carriers.
Copyright Automatic Identification Systems, Inc. 1993-2018, a U.S.A. based veteran owned company www.scanalyst.com



Scan For Help





SCANALYST 3 Report



Inspected Image

This barcode could not be read or verified. The SSCC barcode data had to be key entered

*The Overall Grade Is The Average Of 10 Scan Profile Grades

| |
|--------------------------------------|
| Barcode Print Quality-Overall |
| Barcode Data Content |
| Barcode Physical Detail |

| |
|--|
| Unreadable |
| 00006757167011613391 |
| Physical Details are not available when the SSCC is manually entered |

Scan Profile Details are not available when the SSCC is manually entered

Resources - Links are case sensitive

GS1 Specifications For SSCC Labels - 2018
www.gs1.org/docs/barcodes/GS1_General_Specifications.pdf

Laymans Guide to Barcode Verification
www.scanalyst.com/resources/LaymansGuidetoANSI_rev_2002.pdf

Additional helpful information www.Goodbarcodes.com

SCANALYST 3 inspection processes are based on current AIDC standards such as ISO ISO/IEC 15415, ISO/IEC 15416, ISO/IEC 15426-1, ISO/IEC 15426-2, ISO/IEC TR 29158 (AIM DPM) and GS1 General Specifications for multiple field data carriers.
Copyright Automatic Identification Systems, Inc. 1993-2018, a U.S.A. based veteran owned company www.scanalyst.com



Scan For Help





SCANALYST 3 Report



Inspected Image

This barcode could not be read or verified. The SSCC barcode data had to be key entered

*The Overall Grade Is The Average Of 10 Scan Profile Grades

| |
|--------------------------------------|
| Barcode Print Quality-Overall |
| Barcode Data Content |
| Barcode Physical Detail |

| |
|--|
| Unreadable |
| 00006757167024924699 |
| Physical Details are not available when the SSCC is manually entered |

Scan Profile Details are not available when the SSCC is manually entered

Resources - Links are case sensitive

GS1 Specifications For SSCC Labels - 2018
www.gs1.org/docs/barcodes/GS1_General_Specifications.pdf

Laymans Guide to Barcode Verification
www.scanalyst.com/resources/LaymansGuidetoANSI_rev_2002.pdf

Additional helpful information www.Goodbarcodes.com

SCANALYST 3 inspection processes are based on current AIDC standards such as ISO ISO/IEC 15415, ISO/IEC 15416, ISO/IEC 15426-1, ISO/IEC 15426-2, ISO/IEC TR 29158 (AIM DPM) and GS1 General Specifications for multiple field data carriers.
 Copyright Automatic Identification Systems, Inc. 1993-2018, a U.S.A. based veteran owned company www.scanalyst.com



Scan For Help



SCANALYST 3 Report



Inspected Image

*The Overall Grade Is The Average Of 10 Scan Profile Grades

| |
|--------------------------------------|
| Barcode Print Quality-Overall |
| Barcode Data Content |
| Barcode Physical Detail |

| |
|--------------------------------------|
| 2.4 (C) |
| 00006757167026324237 |
| AI - 00 Title - SSCC Length - 20 |
| X Dim 0.018 Height 1.116 Width 2.849 |

Verification Report

Code Type: Code 128
 Overall Symbol Grade: 2.4 (C)
 Aperture: 4.435 px Relative Mode

Scan reflectance profile #0 analysis

Scan reflectance profile grade 4.0 (A)

| Parameter | Value | Grade |
|--------------------|---------|---------|
| Decode | Yes | 4.0 (A) |
| Rmax | 1.0000 | N/A |
| Rmin | 0.0392 | 4.0 (A) |
| Global Threshold | 0.9608 | N/A |
| Symbol Contrast | 0.9608 | 4.0 (A) |
| Min. edge contrast | 0.7961 | 4.0 (A) |
| Modulation | 0.8286 | 4.0 (A) |
| Defects | 0.0082 | 4.0 (A) |
| Decodability | 0.9237 | 4.0 (A) |
| Quiet zone | -1.2901 | 4.0 (A) |

Resources - Links are case sensitive

GS1 Specifications For SSCC Labels - 2018
www.gs1.org/docs/barcodes/GS1_General_Specifications.pdf

Laymans Guide to Barcode Verification
www.scanalyst.com/resources/LaymansGuidetoANSI_rev_2002.pdf

Additional helpful information www.Goodbarcodes.com

SCANALYST 3 inspection processes are based on current AIDC standards such as ISO ISO/IEC 15415, ISO/IEC 15416, ISO/IEC 15426-1, ISO/IEC 15426-2, ISO/IEC TR 29158 (AIM DPM) and GS1 General Specifications for multiple field data carriers.
 Copyright Automatic Identification Systems, Inc. 1993-2018, a U.S.A. based veteran owned company www.scanalyst.com



Scan For Help

