

SCANALYST 3 Report



Inspected Image

The barcode height is supposed to be 1.25 in. high. This barcode is out of spec which impacts the ability to scan it and handle the package automatically.

*The Overall Grade Is The Average Of 10 Scan Profile Grades

Barcode Print Quality-Overall
Barcode Data Content
Barcode Physical Detail

2.1 (C)
00006757167008876921
AI - 00 Title - SSCC Length - 20
X Dim 0.017
Height 0.963
Width 2.626

Verification Report

Code Type: Code 128
 Overall Symbol Grade: 2.1 (C)
 Aperture: 4.221 px Relative Mode

Scan reflectance profile #0 analysis

Scan reflectance profile grade 4.0 (A)

Parameter	Value	Grade
Decode	Yes	4.0 (A)
Rmax	1.0000	N/A
Rmin	0.1020	4.0 (A)
Global Threshold	0.8980	N/A
Symbol Contrast	0.8980	4.0 (A)
Min. edge contrast	0.6353	4.0 (A)
Modulation	0.7074	4.0 (A)
Defects	0.0873	4.0 (A)
Decodability	0.7650	4.0 (A)
Quiet zone	1.2693	4.0 (A)

Resources - Links are case sensitive

GS1 Specifications For SSCC Labels - 2018
www.gs1.org/docs/barcodes/GS1_General_Specifications.pdf

Laymans Guide to Barcode Verification
www.scanalyst.com/resources/LaymansGuidetoANSI_rev_2002.pdf

Additional helpful information www.Goodbarcodes.com

SCANALYST 3 inspection processes are based on current AIDC standards such as ISO ISO/IEC 15415, ISO/IEC 15416, ISO/IEC 15426-1, ISO/IEC 15426-2, ISO/IEC TR 29158 (AIM DPM) and GS1 General Specifications for multiple field data carriers.
 Copyright Automatic Identification Systems, Inc. 1993-2018, a U.S.A. based veteran owned company www.scanalyst.com



Scan For Help





SCANALYST 3 Report



Inspected Image

*The Overall Grade Is The Average Of 10 Scan Profile Grades

- Barcode Print Quality-Overall**
- Barcode Data Content**
- Barcode Physical Detail**

2.3 (C)		
00006757167008747986		
AI - 00	Title - SSCC	Length - 20
X Dim 0.017	Height 1.074	Width 2.706

Verification Report

Code Type: Code 128
 Overall Symbol Grade: 2.3 (C)
 Aperture: 4.231 px Relative Mode

Scan reflectance profile #0 analysis

Scan reflectance profile grade 2.0 (C)

Parameter	Value	Grade
Decode	Yes	4.0 (A)
Rmax	0.9961	N/A
Rmin	0.0627	4.0 (A)
Global Threshold	0.9333	N/A
Symbol Contrast	0.9333	4.0 (A)
Min. edge contrast	0.6235	4.0 (A)
Modulation	0.6681	3.0 (B)
Defects	0.0756	4.0 (A)
Decodability	0.4297	2.0 (C)
Quiet zone	-1.2636	4.0 (A)

Resources - Links are case sensitive

GS1 Specifications For SSCC Labels - 2018
www.gs1.org/docs/barcodes/GS1_General_Specifications.pdf

Laymans Guide to Barcode Verification
www.scanalyst.com/resources/LaymansGuidetoANSI_rev_2002.pdf

Additional helpful information www.Goodbarcodes.com

SCANALYST 3 inspection processes are based on current AIDC standards such as ISO ISO/IEC 15415, ISO/IEC 15416, ISO/IEC 15426-1, ISO/IEC 15426-2, ISO/IEC TR 29158 (AIM DPM) and GS1 General Specifications for multiple field data carriers.
 Copyright Automatic Identification Systems, Inc. 1993-2018, a U.S.A. based veteran owned company www.scanalyst.com



Scan For Help



SCANALYST 3 Report



Inspected Image

*The Overall Grade Is The Average Of 10 Scan Profile Grades

Barcode Print Quality-Overall
Barcode Data Content
Barcode Physical Detail

0.0 (F)
00006757167008874088
AI - 00 Title - SSCC Length - 20
X Dim 0.017 Height 1.052 Width 2.670

Verification Report

Code Type: Code 128
 Overall Symbol Grade: 0.0 (F)
 Aperture: 4.238 px Relative Mode

Scan reflectance profile #0 analysis

Scan reflectance profile grade 0.0 (F)

Parameter	Value	Grade
Decode	Yes	4.0 (A)
Rmax	1.0000	N/A
Rmin	0.0471	4.0 (A)
Global Threshold	0.9529	N/A
Symbol Contrast	0.9529	4.0 (A)
Min. edge contrast	0.5137	4.0 (A)
Modulation	0.5391	2.0 (C)
Defects	0.0165	4.0 (A)
Decodability	0.0786	0.0 (F)
Quiet zone	1.2904	4.0 (A)

Resources - Links are case sensitive

GS1 Specifications For SSCC Labels - 2018
www.gs1.org/docs/barcodes/GS1_General_Specifications.pdf

Laymans Guide to Barcode Verification
www.scanalyst.com/resources/LaymansGuidetoANSI_rev_2002.pdf

Additional helpful information www.Goodbarcodes.com

SCANALYST 3 inspection processes are based on current AIDC standards such as ISO ISO/IEC 15415, ISO/IEC 15416, ISO/IEC 15426-1, ISO/IEC 15426-2, ISO/IEC TR 29158 (AIM DPM) and GS1 General Specifications for multiple field data carriers.
 Copyright Automatic Identification Systems, Inc. 1993-2018, a U.S.A. based veteran owned company www.scanalyst.com



Scan For Help





SCANALYST 3 Report



Inspected Image

*The Overall Grade Is The Average Of 10 Scan Profile Grades

Barcode Print Quality-Overall
Barcode Data Content
Barcode Physical Detail

0.8 (D)
00006757167008867578 AI - 00 Title - SSCC Length - 20
X Dim 0.017 Height 1.082 Width 2.728

Verification Report

Code Type: Code 128
 Overall Symbol Grade: 0.8 (D)
 Aperture: 4.264 px Relative Mode

Scan reflectance profile #0 analysis

Scan reflectance profile grade 0.0 (F)

Parameter	Value	Grade
Decode	No	0.0 (F)
Rmax	1.0000	N/A
Rmin	0.0392	4.0 (A)
Global Threshold	0.9608	N/A
Symbol Contrast	0.9608	4.0 (A)
Min. edge contrast	0.4588	4.0 (A)
Modulation	0.4776	1.0 (D)
Defects	0.2367	2.0 (C)
Decodability	0.1628	0.0 (F)
Quiet zone	1.3475	4.0 (A)

Resources - Links are case sensitive

GS1 Specifications For SSCC Labels - 2018
www.gs1.org/docs/barcodes/GS1_General_Specifications.pdf

Laymans Guide to Barcode Verification
www.scanalyst.com/resources/LaymansGuidetoANSI_rev_2002.pdf

Additional helpful information www.Goodbarcodes.com

SCANALYST 3 inspection processes are based on current AIDC standards such as ISO ISO/IEC 15415, ISO/IEC 15416, ISO/IEC 15426-1, ISO/IEC 15426-2, ISO/IEC TR 29158 (AIM DPM) and GS1 General Specifications for multiple field data carriers.
 Copyright Automatic Identification Systems, Inc. 1993-2018, a U.S.A. based veteran owned company www.scanalyst.com



Scan For Help





SCANALYST 3 Report



Inspected Image

This barcode could not be read or verified. The SSCC barcode data had to be key entered

*The Overall Grade Is The Average Of 10 Scan Profile Grades

Barcode Print Quality-Overall
Barcode Data Content
Barcode Physical Detail

Unreadable
00006757167008695249
Physical Details are not available when the SSCC is manually entered

Scan Profile Details are not available when the SSCC is manually entered

Resources - Links are case sensitive

GS1 Specifications For SSCC Labels - 2018
www.gs1.org/docs/barcodes/GS1_General_Specifications.pdf

Laymans Guide to Barcode Verification
www.scanalyst.com/resources/LaymansGuidetoANSI_rev_2002.pdf

Additional helpful information www.Goodbarcodes.com

SCANALYST 3 inspection processes are based on current AIDC standards such as ISO ISO/IEC 15415, ISO/IEC 15416, ISO/IEC 15426-1, ISO/IEC 15426-2, ISO/IEC TR 29158 (AIM DPM) and GS1 General Specifications for multiple field data carriers.
Copyright Automatic Identification Systems, Inc. 1993-2018, a U.S.A. based veteran owned company www.scanalyst.com



Scan For Help





SCANALYST 3 Report



Inspected Image

The barcode height is supposed to be 1.25 in. high. This barcode is out of spec which impacts the ability to scan it and handle the package automatically.

*The Overall Grade Is The Average Of 10 Scan Profile Grades

Barcode Print Quality-Overall
Barcode Data Content
Barcode Physical Detail

0.8 (D)
00006757167008726288
AI - 00 Title - SSCC Length - 20
X Dim 0.018 Height 0.970 Width 2.759

Verification Report

Code Type: Code 128
 Overall Symbol Grade: 0.8 (D)
 Aperture: 4.317 px Relative Mode

Scan reflectance profile #0 analysis

Scan reflectance profile grade 2.0 (C)

Parameter	Value	Grade
Decode	Yes	4.0 (A)
Rmax	1.0000	N/A
Rmin	0.0745	4.0 (A)
Global Threshold	0.9255	N/A
Symbol Contrast	0.9255	4.0 (A)
Min. edge contrast	0.5412	4.0 (A)
Modulation	0.5847	2.0 (C)
Defects	0.0085	4.0 (A)
Decodability	0.4186	2.0 (C)
Quiet zone	1.2874	4.0 (A)

Resources - Links are case sensitive

GS1 Specifications For SSCC Labels - 2018
www.gs1.org/docs/barcodes/GS1_General_Specifications.pdf

Laymans Guide to Barcode Verification
www.scanalyst.com/resources/LaymansGuidetoANSI_rev_2002.pdf

Additional helpful information www.Goodbarcodes.com

SCANALYST 3 inspection processes are based on current AIDC standards such as ISO ISO/IEC 15415, ISO/IEC 15416, ISO/IEC 15426-1, ISO/IEC 15426-2, ISO/IEC TR 29158 (AIM DPM) and GS1 General Specifications for multiple field data carriers.
 Copyright Automatic Identification Systems, Inc. 1993-2018, a U.S.A. based veteran owned company www.scanalyst.com



Scan For Help





SCANALYST 3 Report



Inspected Image

This barcode could not be read or verified. The SSCC barcode data had to be key entered

*The Overall Grade Is The Average Of 10 Scan Profile Grades

Barcode Print Quality-Overall
Barcode Data Content
Barcode Physical Detail

Unreadable
00006757167008739486
Physical Details are not available when the SSCC is manually entered

Scan Profile Details are not available when the SSCC is manually entered

Resources - Links are case sensitive

GS1 Specifications For SSCC Labels - 2018
www.gs1.org/docs/barcodes/GS1_General_Specifications.pdf

Laymans Guide to Barcode Verification
www.scanalyst.com/resources/LaymansGuidetoANSI_rev_2002.pdf

Additional helpful information www.Goodbarcodes.com

SCANALYST 3 inspection processes are based on current AIDC standards such as ISO ISO/IEC 15415, ISO/IEC 15416, ISO/IEC 15426-1, ISO/IEC 15426-2, ISO/IEC TR 29158 (AIM DPM) and GS1 General Specifications for multiple field data carriers.
Copyright Automatic Identification Systems, Inc. 1993-2018, a U.S.A. based veteran owned company www.scanalyst.com



Scan For Help





SCANALYST 3 Report



Inspected Image

*The Overall Grade Is The Average Of 10 Scan Profile Grades

Barcode Print Quality-Overall
Barcode Data Content
Barcode Physical Detail

0.0 (F)
00006757167011420753
AI - 00 Title - SSCC Length - 20
X Dim 0.018 Height 1.093 Width 2.758

Verification Report

Code Type: Code 128
 Overall Symbol Grade: 0.0 (F)
 Aperture: 4.293 px Relative Mode

Scan reflectance profile #0 analysis

Scan reflectance profile grade 0.0 (F)

Parameter	Value	Grade
Decode	No	0.0 (F)
Rmax	0.8196	N/A
Rmin	0.0196	4.0 (A)
Global Threshold	0.8000	N/A
Symbol Contrast	0.8000	4.0 (A)
Min. edge contrast	0.3804	4.0 (A)
Modulation	0.4755	1.0 (D)
Defects	0.0784	4.0 (A)
Decodability	0.0534	0.0 (F)
Quiet zone	-1.2918	4.0 (A)

Resources - Links are case sensitive

GS1 Specifications For SSCC Labels - 2018
www.gs1.org/docs/barcodes/GS1_General_Specifications.pdf

Laymans Guide to Barcode Verification
www.scanalyst.com/resources/LaymansGuidetoANSI_rev_2002.pdf

Additional helpful information www.Goodbarcodes.com

SCANALYST 3 inspection processes are based on current AIDC standards such as ISO ISO/IEC 15415, ISO/IEC 15416, ISO/IEC 15426-1, ISO/IEC 15426-2, ISO/IEC TR 29158 (AIM DPM) and GS1 General Specifications for multiple field data carriers.
 Copyright Automatic Identification Systems, Inc. 1993-2018, a U.S.A. based veteran owned company www.scanalyst.com

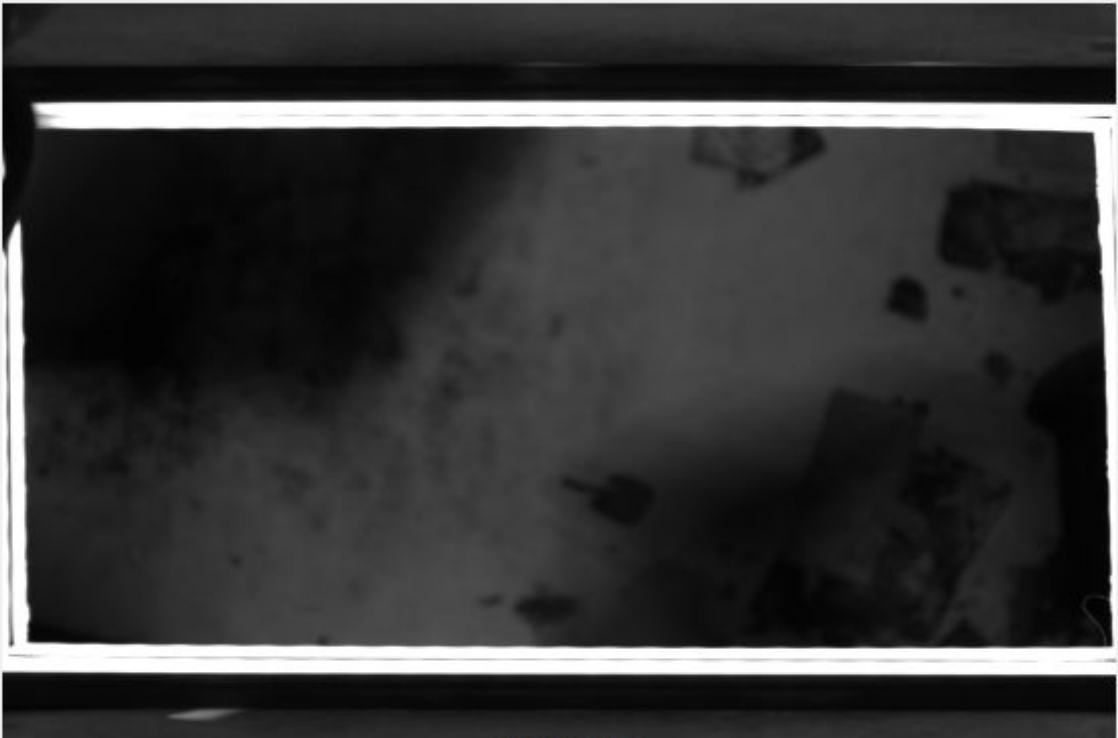


Scan For Help





SCANALYST 3 Report



Inspected Image

This barcode could not be read or verified. The SSCC barcode data had to be key entered

*The Overall Grade Is The Average Of 10 Scan Profile Grades

Barcode Print Quality-Overall
Barcode Data Content
Barcode Physical Detail

Unreadable
00006757167025524737
Physical Details are not available when the SSCC is manually entered

Scan Profile Details are not available when the SSCC is manually entered

Resources - Links are case sensitive

GS1 Specifications For SSCC Labels - 2018
www.gs1.org/docs/barcodes/GS1_General_Specifications.pdf

Laymans Guide to Barcode Verification
www.scanalyst.com/resources/LaymansGuidetoANSI_rev_2002.pdf

Additional helpful information www.Goodbarcodes.com

SCANALYST 3 inspection processes are based on current AIDC standards such as ISO ISO/IEC 15415, ISO/IEC 15416, ISO/IEC 15426-1, ISO/IEC 15426-2, ISO/IEC TR 29158 (AIM DPM) and GS1 General Specifications for multiple field data carriers.
Copyright Automatic Identification Systems, Inc. 1993-2018, a U.S.A. based veteran owned company www.scanalyst.com



[Scan For Help](#)





SCANALYST 3 Report



Inspected Image

*The Overall Grade Is The Average Of 10 Scan Profile Grades

Barcode Print Quality-Overall
Barcode Data Content
Barcode Physical Detail

1.2 (D)
00006757167008858996
AI - 00 Title - SSCC Length - 20
X Dim 0.017 Height 1.024 Width 2.607

Verification Report

Code Type: Code 128
 Overall Symbol Grade: 1.2 (D)
 Aperture: 4.081 px Relative Mode

Scan reflectance profile #0 analysis

Scan reflectance profile grade 2.0 (C)

Parameter	Value	Grade
Decode	Yes	4.0 (A)
Rmax	1.0000	N/A
Rmin	0.0706	4.0 (A)
Global Threshold	0.9294	N/A
Symbol Contrast	0.9294	4.0 (A)
Min. edge contrast	0.6941	4.0 (A)
Modulation	0.7468	4.0 (A)
Defects	0.1266	4.0 (A)
Decodability	0.3898	2.0 (C)
Quiet zone	1.2585	4.0 (A)

Resources - Links are case sensitive

GS1 Specifications For SSCC Labels - 2018
www.gs1.org/docs/barcodes/GS1_General_Specifications.pdf

Laymans Guide to Barcode Verification
www.scanalyst.com/resources/LaymansGuidetoANSI_rev_2002.pdf

Additional helpful information www.Goodbarcodes.com

SCANALYST 3 inspection processes are based on current AIDC standards such as ISO ISO/IEC 15415, ISO/IEC 15416, ISO/IEC 15426-1, ISO/IEC 15426-2, ISO/IEC TR 29158 (AIM DPM) and GS1 General Specifications for multiple field data carriers.
 Copyright Automatic Identification Systems, Inc. 1993-2018, a U.S.A. based veteran owned company www.scanalyst.com



Scan For Help





SCANALYST 3 Report



Inspected Image

*The Overall Grade Is The Average Of 10 Scan Profile Grades

Barcode Print Quality-Overall

0.3 (F)

Barcode Data Content

00006757167025469120
AI - 00 Title - SSCC Length - 20

Barcode Physical Detail

X Dim Height Width
0.017 1.058 2.672

Verification Report

Code Type: Code 128
Overall Symbol Grade: 0.3 (F)
Aperture: 4.182 px Relative Mode

Scan reflectance profile #0 analysis

Scan reflectance profile grade 1.0 (D)

Parameter	Value	Grade
Decode	Yes	4.0 (A)
Rmax	1.0000	N/A
Rmin	0.0667	4.0 (A)
Global Threshold	0.9333	N/A
Symbol Contrast	0.9333	4.0 (A)
Min. edge contrast	0.6784	4.0 (A)
Modulation	0.7269	4.0 (A)
Defects	0.0756	4.0 (A)
Decodability	0.2729	1.0 (D)
Quiet zone	-1.2684	4.0 (A)

Resources - Links are case sensitive

GS1 Specifications For SSCC Labels - 2018
www.gs1.org/docs/barcodes/GS1_General_Specifications.pdf

Laymans Guide to Barcode Verification
www.scanalyst.com/resources/LaymansGuidetoANSI_rev_2002.pdf

Additional helpful information www.Goodbarcodes.com

SCANALYST 3 inspection processes are based on current AIDC standards such as ISO ISO/IEC 15415, ISO/IEC 15416, ISO/IEC 15426-1, ISO/IEC 15426-2, ISO/IEC TR 29158 (AIM DPM) and GS1 General Specifications for multiple field data carriers.
Copyright Automatic Identification Systems, Inc. 1993-2018, a U.S.A. based veteran owned company www.scanalyst.com

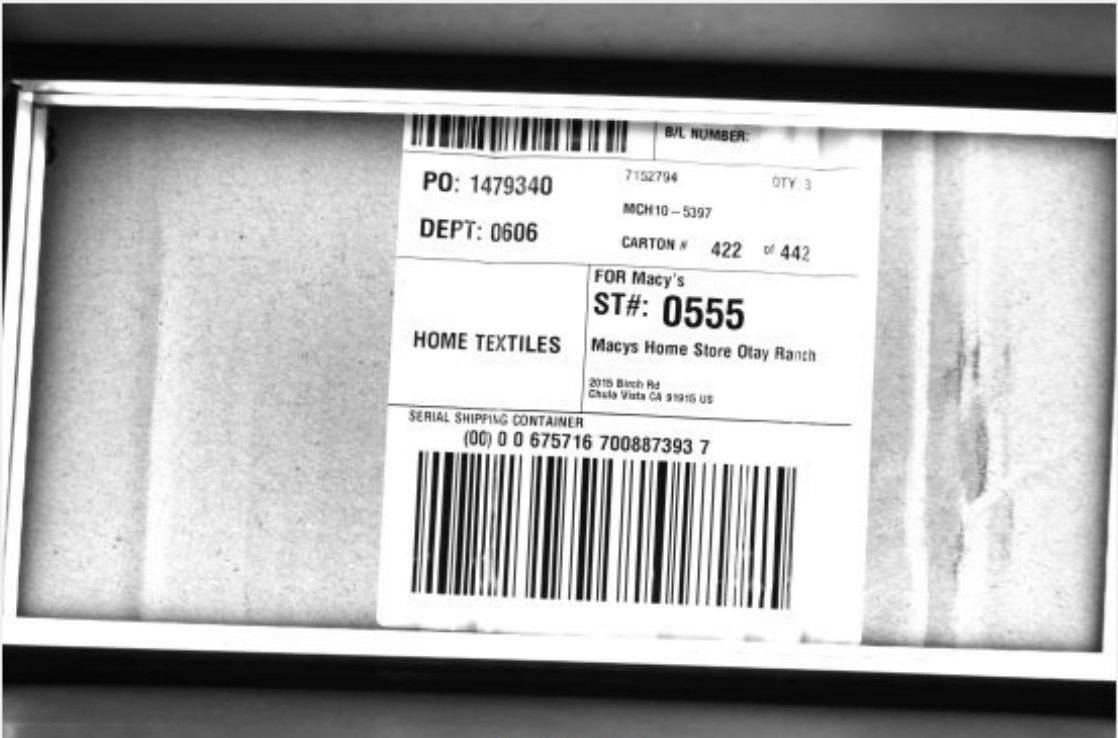


Scan For Help





SCANALYST 3 Report



Inspected Image

*The Overall Grade Is The Average Of 10 Scan Profile Grades

Barcode Print Quality-Overall
Barcode Data Content
Barcode Physical Detail

0.7 (D)
00006757167008873937
AI - 00 Title - SSCC Length - 20
X Dim 0.017 Height 1.074 Width 2.631

Verification Report

Code Type: Code 128
 Overall Symbol Grade: 0.7 (D)
 Aperture: 4.175 px Relative Mode

Scan reflectance profile #0 analysis

Scan reflectance profile grade 2.0 (C)

Parameter	Value	Grade
Decode	Yes	4.0 (A)
Rmax	1.0000	N/A
Rmin	0.0549	4.0 (A)
Global Threshold	0.9451	N/A
Symbol Contrast	0.9451	4.0 (A)
Min. edge contrast	0.5961	4.0 (A)
Modulation	0.6307	3.0 (B)
Defects	0.0041	4.0 (A)
Decodability	0.3704	2.0 (C)
Quiet zone	-1.2930	4.0 (A)

Resources - Links are case sensitive

GS1 Specifications For SSCC Labels - 2018
www.gs1.org/docs/barcodes/GS1_General_Specifications.pdf

Laymans Guide to Barcode Verification
www.scanalyst.com/resources/LaymansGuidetoANSI_rev_2002.pdf

Additional helpful information www.Goodbarcodes.com

SCANALYST 3 inspection processes are based on current AIDC standards such as ISO ISO/IEC 15415, ISO/IEC 15416, ISO/IEC 15426-1, ISO/IEC 15426-2, ISO/IEC TR 29158 (AIM DPM) and GS1 General Specifications for multiple field data carriers.
 Copyright Automatic Identification Systems, Inc. 1993-2018, a U.S.A. based veteran owned company www.scanalyst.com



Scan For Help





SCANALYST 3 Report



Inspected Image

*The Overall Grade Is The Average Of 10 Scan Profile Grades

Barcode Print Quality-Overall	1.4 (D)
Barcode Data Content	00006757167025494528 AI - 00 Title - SSCC Length - 20
Barcode Physical Detail	X Dim 0.018 Height 1.107 Width 2.823

Verification Report

Code Type: Code 128
 Overall Symbol Grade: 1.4 (D)
 Aperture: 4.415 px Relative Mode

Scan reflectance profile #0 analysis

Scan reflectance profile grade 0.0 (F)

Parameter	Value	Grade
Decode	Yes	4.0 (A)
Rmax	1.0000	N/A
Rmin	0.0353	4.0 (A)
Global Threshold	0.9647	N/A
Symbol Contrast	0.9647	4.0 (A)
Min. edge contrast	0.3725	4.0 (A)
Modulation	0.3862	0.0 (F)
Defects	0.0325	4.0 (A)
Decodability	0.2087	0.0 (F)
Quiet zone	-1.2938	4.0 (A)

Resources - Links are case sensitive

GS1 Specifications For SSCC Labels - 2018
www.gs1.org/docs/barcodes/GS1_General_Specifications.pdf

Laymans Guide to Barcode Verification
www.scanalyst.com/resources/LaymansGuidetoANSI_rev_2002.pdf

Additional helpful information www.Goodbarcodes.com

SCANALYST 3 inspection processes are based on current AIDC standards such as ISO ISO/IEC 15415, ISO/IEC 15416, ISO/IEC 15426-1, ISO/IEC 15426-2, ISO/IEC TR 29158 (AIM DPM) and GS1 General Specifications for multiple field data carriers.
 Copyright Automatic Identification Systems, Inc. 1993-2018, a U.S.A. based veteran owned company www.scanalyst.com



Scan For Help





SCANALYST 3 Report



Inspected Image

*The Overall Grade Is The Average Of 10 Scan Profile Grades

Barcode Print Quality-Overall
Barcode Data Content
Barcode Physical Detail

0.6 (D)
00006757167008860319
AI - 00 Title - SSCC Length - 20
X Dim 0.017
Height 1.027
Width 2.721

Verification Report

Code Type: Code 128
 Overall Symbol Grade: 0.6 (D)
 Aperture: 4.232 px Relative Mode

Scan reflectance profile #0 analysis

Scan reflectance profile grade 0.0 (F)

Parameter	Value	Grade
Decode	Yes	4.0 (A)
Rmax	0.6667	N/A
Rmin	0.0196	4.0 (A)
Global Threshold	0.6471	N/A
Symbol Contrast	0.6471	3.0 (B)
Min. edge contrast	0.3490	4.0 (A)
Modulation	0.5394	2.0 (C)
Defects	0.1576	3.0 (B)
Decodability	0.7703	4.0 (A)
Quiet zone	0.7331	0.0 (F)

Resources - Links are case sensitive

GS1 Specifications For SSCC Labels - 2018
www.gs1.org/docs/barcodes/GS1_General_Specifications.pdf

Laymans Guide to Barcode Verification
www.scanalyst.com/resources/LaymansGuidetoANSI_rev_2002.pdf

Additional helpful information www.Goodbarcodes.com

SCANALYST 3 inspection processes are based on current AIDC standards such as ISO ISO/IEC 15415, ISO/IEC 15416, ISO/IEC 15426-1, ISO/IEC 15426-2, ISO/IEC TR 29158 (AIM DPM) and GS1 General Specifications for multiple field data carriers.
 Copyright Automatic Identification Systems, Inc. 1993-2018, a U.S.A. based veteran owned company www.scanalyst.com



Scan For Help





SCANALYST 3 Report



Inspected Image

This barcode could not be read or verified. The SSCC barcode data had to be key entered

*The Overall Grade Is The Average Of 10 Scan Profile Grades

Barcode Print Quality-Overall
Barcode Data Content
Barcode Physical Detail

Unreadable
00006757167008713912
Physical Details are not available when the SSCC is manually entered

Scan Profile Details are not available when the SSCC is manually entered

Resources - Links are case sensitive

GS1 Specifications For SSCC Labels - 2018
www.gs1.org/docs/barcodes/GS1_General_Specifications.pdf

Laymans Guide to Barcode Verification
www.scanalyst.com/resources/LaymansGuidetoANSI_rev_2002.pdf

Additional helpful information www.Goodbarcodes.com

SCANALYST 3 inspection processes are based on current AIDC standards such as ISO ISO/IEC 15415, ISO/IEC 15416, ISO/IEC 15426-1, ISO/IEC 15426-2, ISO/IEC TR 29158 (AIM DPM) and GS1 General Specifications for multiple field data carriers.
Copyright Automatic Identification Systems, Inc. 1993-2018, a U.S.A. based veteran owned company www.scanalyst.com



[Scan For Help](#)





SCANALYST 3 Report



Inspected Image

This barcode could not be read or verified. The SSCC barcode data had to be key entered

*The Overall Grade Is The Average Of 10 Scan Profile Grades

Barcode Print Quality-Overall
Barcode Data Content
Barcode Physical Detail

Unreadable
00006757167008870578
Physical Details are not available when the SSCC is manually entered

Scan Profile Details are not available when the SSCC is manually entered

Resources - Links are case sensitive

GS1 Specifications For SSCC Labels - 2018
www.gs1.org/docs/barcodes/GS1_General_Specifications.pdf

Laymans Guide to Barcode Verification
www.scanalyst.com/resources/LaymansGuidetoANSI_rev_2002.pdf

Additional helpful information www.Goodbarcodes.com

SCANALYST 3 inspection processes are based on current AIDC standards such as ISO ISO/IEC 15415, ISO/IEC 15416, ISO/IEC 15426-1, ISO/IEC 15426-2, ISO/IEC TR 29158 (AIM DPM) and GS1 General Specifications for multiple field data carriers.
Copyright Automatic Identification Systems, Inc. 1993-2018, a U.S.A. based veteran owned company www.scanalyst.com



Scan For Help





SCANALYST 3 Report



Inspected Image

*The Overall Grade Is The Average Of 10 Scan Profile Grades

- Barcode Print Quality-Overall**
- Barcode Data Content**
- Barcode Physical Detail**

1.0 (D)		
00006757167008682362		
AI - 00	Title - SSCC	Length - 20
X Dim 0.018	Height 1.121	Width 2.870

Verification Report

Code Type: Code 128
 Overall Symbol Grade: 1.0 (D)
 Aperture: 4.423 px Relative Mode

Scan reflectance profile #0 analysis

Scan reflectance profile grade 1.0 (D)

Parameter	Value	Grade
Decode	Yes	4.0 (A)
Rmax	0.3765	N/A
Rmin	0.0118	4.0 (A)
Global Threshold	0.3647	N/A
Symbol Contrast	0.3647	1.0 (D)
Min. edge contrast	0.2549	4.0 (A)
Modulation	0.6989	3.0 (B)
Defects	0.2043	2.0 (C)
Decodability	0.8847	4.0 (A)
Quiet zone	1.2722	4.0 (A)

Resources - Links are case sensitive

GS1 Specifications For SSCC Labels - 2018
www.gs1.org/docs/barcodes/GS1_General_Specifications.pdf

Laymans Guide to Barcode Verification
www.scanalyst.com/resources/LaymansGuidetoANSI_rev_2002.pdf

Additional helpful information www.Goodbarcodes.com

SCANALYST 3 inspection processes are based on current AIDC standards such as ISO ISO/IEC 15415, ISO/IEC 15416, ISO/IEC 15426-1, ISO/IEC 15426-2, ISO/IEC TR 29158 (AIM DPM) and GS1 General Specifications for multiple field data carriers.
 Copyright Automatic Identification Systems, Inc. 1993-2018, a U.S.A. based veteran owned company www.scanalyst.com



Scan For Help



SCANALYST 3 Report



Inspected Image

*The Overall Grade Is The Average Of 10 Scan Profile Grades

Barcode Print Quality-Overall
Barcode Data Content
Barcode Physical Detail

1.8 (C)
00006757167008648818
AI - 00 Title - SSCC Length - 20
X Dim 0.018 Height 1.070 Width 2.763

Verification Report

Code Type: Code 128
 Overall Symbol Grade: 1.8 (C)
 Aperture: 4.443 px Relative Mode

Scan reflectance profile #0 analysis

Scan reflectance profile grade 3.0 (B)

Parameter	Value	Grade
Decode	Yes	4.0 (A)
Rmax	1.0000	N/A
Rmin	0.0627	4.0 (A)
Global Threshold	0.9373	N/A
Symbol Contrast	0.9373	4.0 (A)
Min. edge contrast	0.6000	4.0 (A)
Modulation	0.6402	3.0 (B)
Defects	0.0167	4.0 (A)
Decodability	0.7214	4.0 (A)
Quiet zone	1.3026	4.0 (A)

Resources - Links are case sensitive

GS1 Specifications For SSCC Labels - 2018
www.gs1.org/docs/barcodes/GS1_General_Specifications.pdf

Laymans Guide to Barcode Verification
www.scanalyst.com/resources/LaymansGuidetoANSI_rev_2002.pdf

Additional helpful information www.Goodbarcodes.com

SCANALYST 3 inspection processes are based on current AIDC standards such as ISO ISO/IEC 15415, ISO/IEC 15416, ISO/IEC 15426-1, ISO/IEC 15426-2, ISO/IEC TR 29158 (AIM DPM) and GS1 General Specifications for multiple field data carriers.
 Copyright Automatic Identification Systems, Inc. 1993-2018, a U.S.A. based veteran owned company www.scanalyst.com



Scan For Help





SCANALYST 3 Report



Inspected Image

This barcode could not be read or verified. The SSCC barcode data had to be key entered

*The Overall Grade Is The Average Of 10 Scan Profile Grades

Barcode Print Quality-Overall
Barcode Data Content
Barcode Physical Detail

Unreadable
00006757167008739189
Physical Details are not available when the SSCC is manually entered

Scan Profile Details are not available when the SSCC is manually entered

Resources - Links are case sensitive

GS1 Specifications For SSCC Labels - 2018
www.gs1.org/docs/barcodes/GS1_General_Specifications.pdf

Laymans Guide to Barcode Verification
www.scanalyst.com/resources/LaymansGuidetoANSI_rev_2002.pdf

Additional helpful information www.Goodbarcodes.com

SCANALYST 3 inspection processes are based on current AIDC standards such as ISO ISO/IEC 15415, ISO/IEC 15416, ISO/IEC 15426-1, ISO/IEC 15426-2, ISO/IEC TR 29158 (AIM DPM) and GS1 General Specifications for multiple field data carriers.
Copyright Automatic Identification Systems, Inc. 1993-2018, a U.S.A. based veteran owned company www.scanalyst.com



Scan For Help





SCANALYST 3 Report



Inspected Image

This barcode could not be read or verified. The SSCC barcode data had to be key entered

*The Overall Grade Is The Average Of 10 Scan Profile Grades

Barcode Print Quality-Overall
Barcode Data Content
Barcode Physical Detail

Unreadable
00006757167008723140
Physical Details are not available when the SSCC is manually entered

Scan Profile Details are not available when the SSCC is manually entered

Resources - Links are case sensitive

GS1 Specifications For SSCC Labels - 2018
www.gs1.org/docs/barcodes/GS1_General_Specifications.pdf

Laymans Guide to Barcode Verification
www.scanalyst.com/resources/LaymansGuidetoANSI_rev_2002.pdf

Additional helpful information www.Goodbarcodes.com

SCANALYST 3 inspection processes are based on current AIDC standards such as ISO ISO/IEC 15415, ISO/IEC 15416, ISO/IEC 15426-1, ISO/IEC 15426-2, ISO/IEC TR 29158 (AIM DPM) and GS1 General Specifications for multiple field data carriers.
Copyright Automatic Identification Systems, Inc. 1993-2018, a U.S.A. based veteran owned company www.scanalyst.com



Scan For Help





SCANALYST 3 Report



Inspected Image

*The Overall Grade Is The Average Of 10 Scan Profile Grades

Barcode Print Quality-Overall

0.8 (D)

Barcode Data Content

00006757167025478078
AI - 00 Title - SSCC Length - 20

Barcode Physical Detail

X Dim Height Width
0.018 1.086 2.772

Verification Report

Code Type: Code 128
Overall Symbol Grade: 0.8 (D)
Aperture: 4.418 px Relative Mode

Scan reflectance profile #0 analysis

Scan reflectance profile grade 0.0 (F)

Parameter	Value	Grade
Decode	No	0.0 (F)
Rmax	0.8039	N/A
Rmin	0.0235	4.0 (A)
Global Threshold	0.7804	N/A
Symbol Contrast	0.7804	4.0 (A)
Min. edge contrast	0.0784	0.0 (F)
Modulation	0.1005	0.0 (F)
Defects	0.2211	2.0 (C)
Decodability	0.0000	0.0 (F)
Quiet zone	-0.1714	0.0 (F)

Resources - Links are case sensitive

GS1 Specifications For SSCC Labels - 2018
www.gs1.org/docs/barcodes/GS1_General_Specifications.pdf

Laymans Guide to Barcode Verification
www.scanalyst.com/resources/LaymansGuidetoANSI_rev_2002.pdf

Additional helpful information www.Goodbarcodes.com

SCANALYST 3 inspection processes are based on current AIDC standards such as ISO ISO/IEC 15415, ISO/IEC 15416, ISO/IEC 15426-1, ISO/IEC 15426-2, ISO/IEC TR 29158 (AIM DPM) and GS1 General Specifications for multiple field data carriers.
Copyright Automatic Identification Systems, Inc. 1993-2018, a U.S.A. based veteran owned company www.scanalyst.com



Scan For Help





SCANALYST 3 Report



Inspected Image

*The Overall Grade Is The Average Of 10 Scan Profile Grades

Barcode Print Quality-Overall
Barcode Data Content
Barcode Physical Detail

0.0 (F)
00006757167008742097
AI - 00 Title - SSCC Length - 20
X Dim 0.017 Height 1.073 Width 2.630

Verification Report

Code Type: Code 128
 Overall Symbol Grade: 0.0 (F)
 Aperture: 4.093 px Relative Mode

Scan reflectance profile #0 analysis

Scan reflectance profile grade 0.0 (F)

Parameter	Value	Grade
Decode	No	0.0 (F)
Rmax	0.7216	N/A
Rmin	0.0196	4.0 (A)
Global Threshold	0.7020	N/A
Symbol Contrast	0.7020	4.0 (A)
Min. edge contrast	0.3333	4.0 (A)
Modulation	0.4749	1.0 (D)
Defects	0.1844	3.0 (B)
Decodability	0.0386	0.0 (F)
Quiet zone	-1.3036	4.0 (A)

Resources - Links are case sensitive

GS1 Specifications For SSCC Labels - 2018
www.gs1.org/docs/barcodes/GS1_General_Specifications.pdf

Laymans Guide to Barcode Verification
www.scanalyst.com/resources/LaymansGuidetoANSI_rev_2002.pdf

Additional helpful information www.Goodbarcodes.com

SCANALYST 3 inspection processes are based on current AIDC standards such as ISO ISO/IEC 15415, ISO/IEC 15416, ISO/IEC 15426-1, ISO/IEC 15426-2, ISO/IEC TR 29158 (AIM DPM) and GS1 General Specifications for multiple field data carriers.
 Copyright Automatic Identification Systems, Inc. 1993-2018, a U.S.A. based veteran owned company www.scanalyst.com



Scan For Help





SCANALYST 3 Report



Inspected Image

*The Overall Grade Is The Average Of 10 Scan Profile Grades

Barcode Print Quality-Overall
Barcode Data Content
Barcode Physical Detail

0.0 (F)
00006757167008740130 AI - 00 Title - SSCC Length - 20
X Dim 0.017 Height 1.070 Width 2.696

Verification Report

Code Type: Code 128
 Overall Symbol Grade: 0.0 (F)
 Aperture: 4.322 px Relative Mode

Scan reflectance profile #0 analysis

Scan reflectance profile grade 0.0 (F)

Parameter	Value	Grade
Decode	No	0.0 (F)
Rmax	1.0000	N/A
Rmin	0.0392	4.0 (A)
Global Threshold	0.9608	N/A
Symbol Contrast	0.9608	4.0 (A)
Min. edge contrast	0.4235	4.0 (A)
Modulation	0.4408	1.0 (D)
Defects	0.3102	0.0 (F)
Decodability	0.0000	0.0 (F)
Quiet zone	1.2832	4.0 (A)

Resources - Links are case sensitive

GS1 Specifications For SSCC Labels - 2018
www.gs1.org/docs/barcodes/GS1_General_Specifications.pdf

Laymans Guide to Barcode Verification
www.scanalyst.com/resources/LaymansGuidetoANSI_rev_2002.pdf

Additional helpful information www.Goodbarcodes.com

SCANALYST 3 inspection processes are based on current AIDC standards such as ISO ISO/IEC 15415, ISO/IEC 15416, ISO/IEC 15426-1, ISO/IEC 15426-2, ISO/IEC TR 29158 (AIM DPM) and GS1 General Specifications for multiple field data carriers.
 Copyright Automatic Identification Systems, Inc. 1993-2018, a U.S.A. based veteran owned company www.scanalyst.com



Scan For Help





SCANALYST 3 Report



Inspected Image

This barcode could not be read or verified. The SSCC barcode data had to be key entered

*The Overall Grade Is The Average Of 10 Scan Profile Grades

Barcode Print Quality-Overall
Barcode Data Content
Barcode Physical Detail

Unreadable
00006757167008644193
Physical Details are not available when the SSCC is manually entered

Scan Profile Details are not available when the SSCC is manually entered

Resources - Links are case sensitive

GS1 Specifications For SSCC Labels - 2018
www.gs1.org/docs/barcodes/GS1_General_Specifications.pdf

Laymans Guide to Barcode Verification
www.scanalyst.com/resources/LaymansGuidetoANSI_rev_2002.pdf

Additional helpful information www.Goodbarcodes.com

SCANALYST 3 inspection processes are based on current AIDC standards such as ISO ISO/IEC 15415, ISO/IEC 15416, ISO/IEC 15426-1, ISO/IEC 15426-2, ISO/IEC TR 29158 (AIM DPM) and GS1 General Specifications for multiple field data carriers.
Copyright Automatic Identification Systems, Inc. 1993-2018, a U.S.A. based veteran owned company www.scanalyst.com



Scan For Help





SCANALYST 3 Report



Inspected Image

This barcode could not be read or verified. The SSCC barcode data had to be key entered

*The Overall Grade Is The Average Of 10 Scan Profile Grades

Barcode Print Quality-Overall
Barcode Data Content
Barcode Physical Detail

Unreadable
00006757167008701230
Physical Details are not available when the SSCC is manually entered

Scan Profile Details are not available when the SSCC is manually entered

Resources - Links are case sensitive

GS1 Specifications For SSCC Labels - 2018
www.gs1.org/docs/barcodes/GS1_General_Specifications.pdf

Laymans Guide to Barcode Verification
www.scanalyst.com/resources/LaymansGuidetoANSI_rev_2002.pdf

Additional helpful information www.Goodbarcodes.com

SCANALYST 3 inspection processes are based on current AIDC standards such as ISO ISO/IEC 15415, ISO/IEC 15416, ISO/IEC 15426-1, ISO/IEC 15426-2, ISO/IEC TR 29158 (AIM DPM) and GS1 General Specifications for multiple field data carriers.
Copyright Automatic Identification Systems, Inc. 1993-2018, a U.S.A. based veteran owned company www.scanalyst.com



Scan For Help





SCANALYST 3 Report



Inspected Image

This barcode could not be read or verified. The SSCC barcode data had to be key entered

*The Overall Grade Is The Average Of 10 Scan Profile Grades

Barcode Print Quality-Overall
Barcode Data Content
Barcode Physical Detail

Unreadable
00006757167008682126
Physical Details are not available when the SSCC is manually entered

Scan Profile Details are not available when the SSCC is manually entered

Resources - Links are case sensitive

GS1 Specifications For SSCC Labels - 2018
www.gs1.org/docs/barcodes/GS1_General_Specifications.pdf

Laymans Guide to Barcode Verification
www.scanalyst.com/resources/LaymansGuidetoANSI_rev_2002.pdf

Additional helpful information www.Goodbarcodes.com

SCANALYST 3 inspection processes are based on current AIDC standards such as ISO ISO/IEC 15415, ISO/IEC 15416, ISO/IEC 15426-1, ISO/IEC 15426-2, ISO/IEC TR 29158 (AIM DPM) and GS1 General Specifications for multiple field data carriers.
Copyright Automatic Identification Systems, Inc. 1993-2018, a U.S.A. based veteran owned company www.scanalyst.com



Scan For Help





SCANALYST 3 Report



Inspected Image

This barcode could not be read or verified. The SSCC barcode data had to be key entered

*The Overall Grade Is The Average Of 10 Scan Profile Grades

Barcode Print Quality-Overall
Barcode Data Content
Barcode Physical Detail

Unreadable
00006757167008904501
Physical Details are not available when the SSCC is manually entered

Scan Profile Details are not available when the SSCC is manually entered

Resources - Links are case sensitive

GS1 Specifications For SSCC Labels - 2018
www.gs1.org/docs/barcodes/GS1_General_Specifications.pdf

Laymans Guide to Barcode Verification
www.scanalyst.com/resources/LaymansGuidetoANSI_rev_2002.pdf

Additional helpful information www.Goodbarcodes.com

SCANALYST 3 inspection processes are based on current AIDC standards such as ISO ISO/IEC 15415, ISO/IEC 15416, ISO/IEC 15426-1, ISO/IEC 15426-2, ISO/IEC TR 29158 (AIM DPM) and GS1 General Specifications for multiple field data carriers.
Copyright Automatic Identification Systems, Inc. 1993-2018, a U.S.A. based veteran owned company www.scanalyst.com



Scan For Help





SCANALYST 3 Report



Inspected Image

*The Overall Grade Is The Average Of 10 Scan Profile Grades

Barcode Print Quality-Overall
Barcode Data Content
Barcode Physical Detail

0.0 (F)
00006757167008731916 AI - 00 Title - SSCC Length - 20
X Dim 0.018 Height 1.080 Width 2.764

Verification Report

Code Type: Code 128
 Overall Symbol Grade: 0.0 (F)
 Aperture: 4.431 px Relative Mode

Scan reflectance profile #0 analysis

Scan reflectance profile grade 0.0 (F)

Parameter	Value	Grade
Decode	Yes	4.0 (A)
Rmax	0.9961	N/A
Rmin	0.0353	4.0 (A)
Global Threshold	0.9608	N/A
Symbol Contrast	0.9608	4.0 (A)
Min. edge contrast	0.7451	4.0 (A)
Modulation	0.7755	4.0 (A)
Defects	0.4000	0.0 (F)
Decodability	0.8157	4.0 (A)
Quiet zone	1.2900	4.0 (A)

Resources - Links are case sensitive

GS1 Specifications For SSCC Labels - 2018
www.gs1.org/docs/barcodes/GS1_General_Specifications.pdf

Laymans Guide to Barcode Verification
www.scanalyst.com/resources/LaymansGuidetoANSI_rev_2002.pdf

Additional helpful information www.Goodbarcodes.com

SCANALYST 3 inspection processes are based on current AIDC standards such as ISO ISO/IEC 15415, ISO/IEC 15416, ISO/IEC 15426-1, ISO/IEC 15426-2, ISO/IEC TR 29158 (AIM DPM) and GS1 General Specifications for multiple field data carriers.
 Copyright Automatic Identification Systems, Inc. 1993-2018, a U.S.A. based veteran owned company www.scanalyst.com



Scan For Help





SCANALYST 3 Report



Inspected Image

This barcode could not be read or verified. The SSCC barcode data had to be key entered

*The Overall Grade Is The Average Of 10 Scan Profile Grades

Barcode Print Quality-Overall
Barcode Data Content
Barcode Physical Detail

Unreadable
00006757167008850426
Physical Details are not available when the SSCC is manually entered

Scan Profile Details are not available when the SSCC is manually entered

Resources - Links are case sensitive

GS1 Specifications For SSCC Labels - 2018
www.gs1.org/docs/barcodes/GS1_General_Specifications.pdf

Laymans Guide to Barcode Verification
www.scanalyst.com/resources/LaymansGuidetoANSI_rev_2002.pdf

Additional helpful information www.Goodbarcodes.com

SCANALYST 3 inspection processes are based on current AIDC standards such as ISO ISO/IEC 15415, ISO/IEC 15416, ISO/IEC 15426-1, ISO/IEC 15426-2, ISO/IEC TR 29158 (AIM DPM) and GS1 General Specifications for multiple field data carriers.
Copyright Automatic Identification Systems, Inc. 1993-2018, a U.S.A. based veteran owned company www.scanalyst.com



Scan For Help





SCANALYST 3 Report



Inspected Image

*The Overall Grade Is The Average Of 10 Scan Profile Grades

Barcode Print Quality-Overall

0.0 (F)

Barcode Data Content

00006757167008735693
AI - 00 Title - SSCC Length - 20

Barcode Physical Detail

X Dim 0.017 Height 1.064 Width 2.679

Verification Report

Code Type: Code 128
Overall Symbol Grade: 0.0 (F)
Aperture: 4.248 px Relative Mode

Scan reflectance profile #0 analysis

Scan reflectance profile grade 0.0 (F)

Parameter	Value	Grade
Decode	No	0.0 (F)
Rmax	1.0000	N/A
Rmin	0.0431	4.0 (A)
Global Threshold	0.9569	N/A
Symbol Contrast	0.9569	4.0 (A)
Min. edge contrast	0.7529	4.0 (A)
Modulation	0.7869	4.0 (A)
Defects	0.4713	0.0 (F)
Decodability	0.0000	0.0 (F)
Quiet zone	-1.2478	4.0 (A)

Resources - Links are case sensitive

GS1 Specifications For SSCC Labels - 2018
www.gs1.org/docs/barcodes/GS1_General_Specifications.pdf

Laymans Guide to Barcode Verification
www.scanalyst.com/resources/LaymansGuidetoANSI_rev_2002.pdf

Additional helpful information www.Goodbarcodes.com

SCANALYST 3 inspection processes are based on current AIDC standards such as ISO ISO/IEC 15415, ISO/IEC 15416, ISO/IEC 15426-1, ISO/IEC 15426-2, ISO/IEC TR 29158 (AIM DPM) and GS1 General Specifications for multiple field data carriers.
Copyright Automatic Identification Systems, Inc. 1993-2018, a U.S.A. based veteran owned company www.scanalyst.com

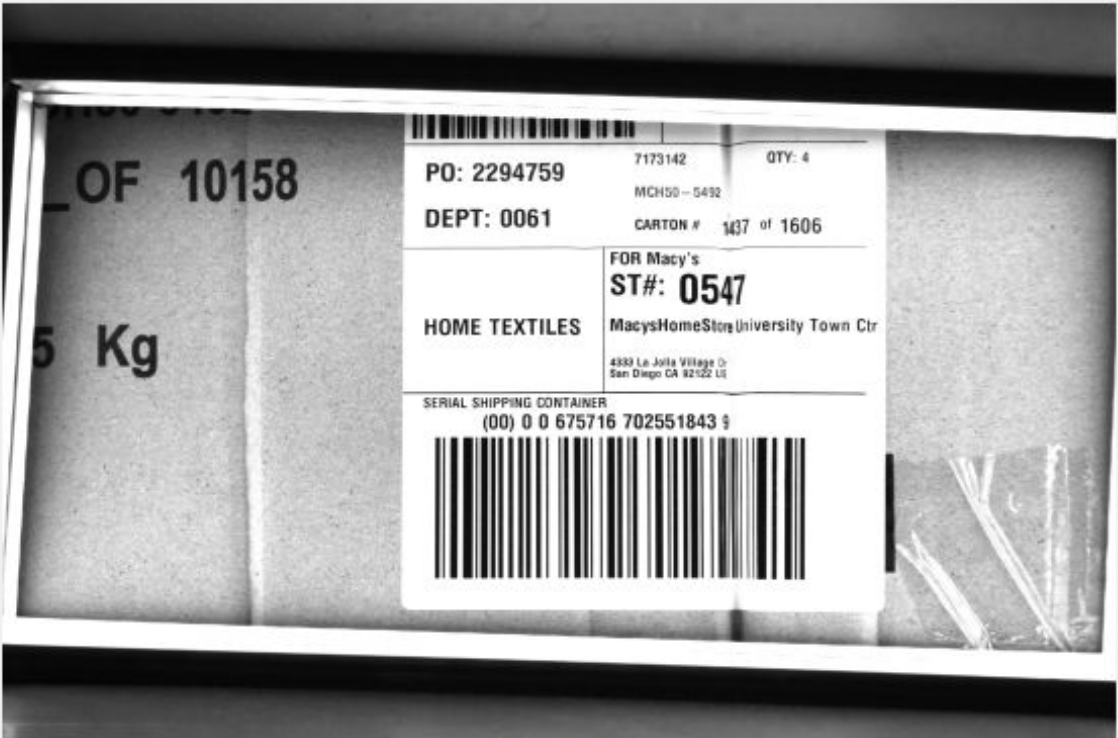


Scan For Help





SCANALYST 3 Report



Inspected Image

This barcode could not be read or verified. The SSCC barcode data had to be key entered

*The Overall Grade Is The Average Of 10 Scan Profile Grades

Barcode Print Quality-Overall
Barcode Data Content
Barcode Physical Detail

Unreadable
00006757167025518439
Physical Details are not available when the SSCC is manually entered

Scan Profile Details are not available when the SSCC is manually entered

Resources - Links are case sensitive

GS1 Specifications For SSCC Labels - 2018
www.gs1.org/docs/barcodes/GS1_General_Specifications.pdf

Laymans Guide to Barcode Verification
www.scanalyst.com/resources/LaymansGuidetoANSI_rev_2002.pdf

Additional helpful information www.Goodbarcodes.com

SCANALYST 3 inspection processes are based on current AIDC standards such as ISO ISO/IEC 15415, ISO/IEC 15416, ISO/IEC 15426-1, ISO/IEC 15426-2, ISO/IEC TR 29158 (AIM DPM) and GS1 General Specifications for multiple field data carriers.
Copyright Automatic Identification Systems, Inc. 1993-2018, a U.S.A. based veteran owned company www.scanalyst.com



Scan For Help





SCANALYST 3 Report



Inspected Image

This barcode could not be read or verified. The SSCC barcode data had to be key entered

*The Overall Grade Is The Average Of 10 Scan Profile Grades

Barcode Print Quality-Overall
Barcode Data Content
Barcode Physical Detail

Unreadable
00006757167025504210
Physical Details are not available when the SSCC is manually entered

Scan Profile Details are not available when the SSCC is manually entered

Resources - Links are case sensitive

GS1 Specifications For SSCC Labels - 2018
www.gs1.org/docs/barcodes/GS1_General_Specifications.pdf

Laymans Guide to Barcode Verification
www.scanalyst.com/resources/LaymansGuidetoANSI_rev_2002.pdf

Additional helpful information www.Goodbarcodes.com

SCANALYST 3 inspection processes are based on current AIDC standards such as ISO ISO/IEC 15415, ISO/IEC 15416, ISO/IEC 15426-1, ISO/IEC 15426-2, ISO/IEC TR 29158 (AIM DPM) and GS1 General Specifications for multiple field data carriers.
Copyright Automatic Identification Systems, Inc. 1993-2018, a U.S.A. based veteran owned company www.scanalyst.com



Scan For Help





SCANALYST 3 Report



Inspected Image

The barcode height is supposed to be 1.25 in. high. This barcode is out of spec which impacts the ability to scan it and handle the package automatically.

*The Overall Grade Is The Average Of 10 Scan Profile Grades

Barcode Print Quality-Overall
Barcode Data Content
Barcode Physical Detail

1.2 (D)
00006757167008854530
AI - 00 Title - SSCC Length - 20
X Dim 0.017 Height 0.474 Width 2.666

Verification Report

Code Type: Code 128
 Overall Symbol Grade: 1.2 (D)
 Aperture: 4.271 px Relative Mode

Scan reflectance profile #0 analysis

Scan reflectance profile grade 0.0 (F)

Parameter	Value	Grade
Decode	Yes	4.0 (A)
Rmax	0.9922	N/A
Rmin	0.0353	4.0 (A)
Global Threshold	0.9569	N/A
Symbol Contrast	0.9569	4.0 (A)
Min. edge contrast	0.0824	0.0 (F)
Modulation	0.0861	0.0 (F)
Defects	0.0615	4.0 (A)
Decodability	0.2753	1.0 (D)
Quiet zone	-1.3907	4.0 (A)

Resources - Links are case sensitive

GS1 Specifications For SSCC Labels - 2018
www.gs1.org/docs/barcodes/GS1_General_Specifications.pdf

Laymans Guide to Barcode Verification
www.scanalyst.com/resources/LaymansGuidetoANSI_rev_2002.pdf

Additional helpful information www.Goodbarcodes.com

SCANALYST 3 inspection processes are based on current AIDC standards such as ISO ISO/IEC 15415, ISO/IEC 15416, ISO/IEC 15426-1, ISO/IEC 15426-2, ISO/IEC TR 29158 (AIM DPM) and GS1 General Specifications for multiple field data carriers.
 Copyright Automatic Identification Systems, Inc. 1993-2018, a U.S.A. based veteran owned company www.scanalyst.com



Scan For Help





SCANALYST 3 Report



Inspected Image

*The Overall Grade Is The Average Of 10 Scan Profile Grades

Barcode Print Quality-Overall
Barcode Data Content
Barcode Physical Detail

0.0 (F)
00006757167008748396 AI - 00 Title - SSCC Length - 20
X Dim 0.018 Height 1.070 Width 2.753

Verification Report

Code Type: Code 128
 Overall Symbol Grade: 0.0 (F)
 Aperture: 4.411 px Relative Mode

Scan reflectance profile #0 analysis

Scan reflectance profile grade 0.0 (F)

Parameter	Value	Grade
Decode	No	0.0 (F)
Rmax	0.9961	N/A
Rmin	0.0353	4.0 (A)
Global Threshold	0.9608	N/A
Symbol Contrast	0.9608	4.0 (A)
Min. edge contrast	0.5216	4.0 (A)
Modulation	0.5429	2.0 (C)
Defects	0.4612	0.0 (F)
Decodability	0.0402	0.0 (F)
Quiet zone	-0.0551	0.0 (F)

Resources - Links are case sensitive

GS1 Specifications For SSCC Labels - 2018
www.gs1.org/docs/barcodes/GS1_General_Specifications.pdf

Laymans Guide to Barcode Verification
www.scanalyst.com/resources/LaymansGuidetoANSI_rev_2002.pdf

Additional helpful information www.Goodbarcodes.com

SCANALYST 3 inspection processes are based on current AIDC standards such as ISO ISO/IEC 15415, ISO/IEC 15416, ISO/IEC 15426-1, ISO/IEC 15426-2, ISO/IEC TR 29158 (AIM DPM) and GS1 General Specifications for multiple field data carriers.
 Copyright Automatic Identification Systems, Inc. 1993-2018, a U.S.A. based veteran owned company www.scanalyst.com



Scan For Help





SCANALYST 3 Report



Inspected Image

This barcode could not be read or verified. The SSCC barcode data had to be key entered

*The Overall Grade Is The Average Of 10 Scan Profile Grades

Barcode Print Quality-Overall
Barcode Data Content
Barcode Physical Detail

Unreadable
00006757167008631711
Physical Details are not available when the SSCC is manually entered

Scan Profile Details are not available when the SSCC is manually entered

Resources - Links are case sensitive

GS1 Specifications For SSCC Labels - 2018
www.gs1.org/docs/barcodes/GS1_General_Specifications.pdf

Laymans Guide to Barcode Verification
www.scanalyst.com/resources/LaymansGuidetoANSI_rev_2002.pdf

Additional helpful information www.Goodbarcodes.com

SCANALYST 3 inspection processes are based on current AIDC standards such as ISO ISO/IEC 15415, ISO/IEC 15416, ISO/IEC 15426-1, ISO/IEC 15426-2, ISO/IEC TR 29158 (AIM DPM) and GS1 General Specifications for multiple field data carriers.
Copyright Automatic Identification Systems, Inc. 1993-2018, a U.S.A. based veteran owned company www.scanalyst.com



[Scan For Help](#)





SCANALYST 3 Report



Inspected Image

This barcode could not be read or verified. The SSCC barcode data had to be key entered

*The Overall Grade Is The Average Of 10 Scan Profile Grades

Barcode Print Quality-Overall
Barcode Data Content
Barcode Physical Detail

Unreadable
00006757167008899074
Physical Details are not available when the SSCC is manually entered

Scan Profile Details are not available when the SSCC is manually entered

Resources - Links are case sensitive

GS1 Specifications For SSCC Labels - 2018
www.gs1.org/docs/barcodes/GS1_General_Specifications.pdf

Laymans Guide to Barcode Verification
www.scanalyst.com/resources/LaymansGuidetoANSI_rev_2002.pdf

Additional helpful information www.Goodbarcodes.com

SCANALYST 3 inspection processes are based on current AIDC standards such as ISO ISO/IEC 15415, ISO/IEC 15416, ISO/IEC 15426-1, ISO/IEC 15426-2, ISO/IEC TR 29158 (AIM DPM) and GS1 General Specifications for multiple field data carriers.
Copyright Automatic Identification Systems, Inc. 1993-2018, a U.S.A. based veteran owned company www.scanalyst.com



Scan For Help





SCANALYST 3 Report



Inspected Image

This barcode could not be read or verified. The SSCC barcode data had to be key entered

*The Overall Grade Is The Average Of 10 Scan Profile Grades

Barcode Print Quality-Overall
Barcode Data Content
Barcode Physical Detail

Unreadable
00006757167008725304
Physical Details are not available when the SSCC is manually entered

Scan Profile Details are not available when the SSCC is manually entered

Resources - Links are case sensitive

GS1 Specifications For SSCC Labels - 2018
www.gs1.org/docs/barcodes/GS1_General_Specifications.pdf

Laymans Guide to Barcode Verification
www.scanalyst.com/resources/LaymansGuidetoANSI_rev_2002.pdf

Additional helpful information www.Goodbarcodes.com

SCANALYST 3 inspection processes are based on current AIDC standards such as ISO ISO/IEC 15415, ISO/IEC 15416, ISO/IEC 15426-1, ISO/IEC 15426-2, ISO/IEC TR 29158 (AIM DPM) and GS1 General Specifications for multiple field data carriers.
Copyright Automatic Identification Systems, Inc. 1993-2018, a U.S.A. based veteran owned company www.scanalyst.com



Scan For Help





SCANALYST 3 Report



Inspected Image

This barcode could not be read or verified. The SSCC barcode data had to be key entered

*The Overall Grade Is The Average Of 10 Scan Profile Grades

Barcode Print Quality-Overall
Barcode Data Content
Barcode Physical Detail

Unreadable
00006757167008866267
Physical Details are not available when the SSCC is manually entered

Scan Profile Details are not available when the SSCC is manually entered

Resources - Links are case sensitive

GS1 Specifications For SSCC Labels - 2018
www.gs1.org/docs/barcodes/GS1_General_Specifications.pdf

Laymans Guide to Barcode Verification
www.scanalyst.com/resources/LaymansGuidetoANSI_rev_2002.pdf

Additional helpful information www.Goodbarcodes.com

SCANALYST 3 inspection processes are based on current AIDC standards such as ISO ISO/IEC 15415, ISO/IEC 15416, ISO/IEC 15426-1, ISO/IEC 15426-2, ISO/IEC TR 29158 (AIM DPM) and GS1 General Specifications for multiple field data carriers.
Copyright Automatic Identification Systems, Inc. 1993-2018, a U.S.A. based veteran owned company www.scanalyst.com

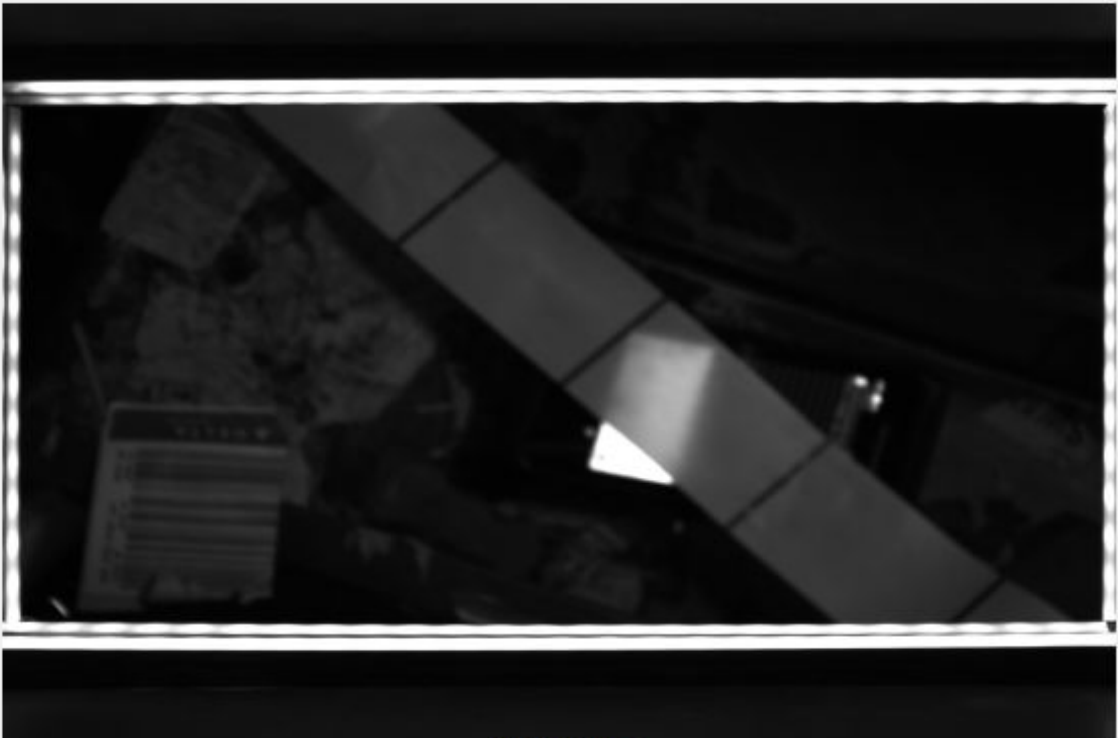


[Scan For Help](#)





SCANALYST 3 Report



Inspected Image

This barcode could not be read or verified. The SSCC barcode data had to be key entered

*The Overall Grade Is The Average Of 10 Scan Profile Grades

Barcode Print Quality-Overall
Barcode Data Content
Barcode Physical Detail

Unreadable
00006757167008747405
Physical Details are not available when the SSCC is manually entered

Scan Profile Details are not available when the SSCC is manually entered

Resources - Links are case sensitive

GS1 Specifications For SSCC Labels - 2018
www.gs1.org/docs/barcodes/GS1_General_Specifications.pdf

Laymans Guide to Barcode Verification
www.scanalyst.com/resources/LaymansGuidetoANSI_rev_2002.pdf

Additional helpful information www.Goodbarcodes.com

SCANALYST 3 inspection processes are based on current AIDC standards such as ISO ISO/IEC 15415, ISO/IEC 15416, ISO/IEC 15426-1, ISO/IEC 15426-2, ISO/IEC TR 29158 (AIM DPM) and GS1 General Specifications for multiple field data carriers.
Copyright Automatic Identification Systems, Inc. 1993-2018, a U.S.A. based veteran owned company www.scanalyst.com



Scan For Help





SCANALYST 3 Report



Inspected Image

*The Overall Grade Is The Average Of 10 Scan Profile Grades

- Barcode Print Quality-Overall
- Barcode Data Content
- Barcode Physical Detail

0.2 (F)		
00006757167008751761		
AI - 00	Title - SSCC	Length - 20
X Dim 0.017	Height 1.057	Width 2.680

Verification Report

Code Type: Code 128
 Overall Symbol Grade: 0.2 (F)
 Aperture: 4.191 px Relative Mode

Scan reflectance profile #0 analysis

Scan reflectance profile grade 0.0 (F)

Parameter	Value	Grade
Decode	Yes	4.0 (A)
Rmax	1.0000	N/A
Rmin	0.0510	4.0 (A)
Global Threshold	0.9490	N/A
Symbol Contrast	0.9490	4.0 (A)
Min. edge contrast	0.6745	4.0 (A)
Modulation	0.7107	4.0 (A)
Defects	0.0289	4.0 (A)
Decodability	0.0188	0.0 (F)
Quiet zone	-1.2580	4.0 (A)

Resources - Links are case sensitive

GS1 Specifications For SSCC Labels - 2018
www.gs1.org/docs/barcodes/GS1_General_Specifications.pdf

Laymans Guide to Barcode Verification
www.scanalyst.com/resources/LaymansGuidetoANSI_rev_2002.pdf

Additional helpful information www.Goodbarcodes.com

SCANALYST 3 inspection processes are based on current AIDC standards such as ISO ISO/IEC 15415, ISO/IEC 15416, ISO/IEC 15426-1, ISO/IEC 15426-2, ISO/IEC TR 29158 (AIM DPM) and GS1 General Specifications for multiple field data carriers.
 Copyright Automatic Identification Systems, Inc. 1993-2018, a U.S.A. based veteran owned company www.scanalyst.com



Scan For Help





SCANALYST 3 Report



Inspected Image

*The Overall Grade Is The Average Of 10 Scan Profile Grades

Barcode Print Quality-Overall
Barcode Data Content
Barcode Physical Detail

0.0 (F)
00006757167008741892
AI - 00 Title - SSCC Length - 20
X Dim 0.018 Height 1.078 Width 2.735

Verification Report

Code Type: Code 128
 Overall Symbol Grade: 0.0 (F)
 Aperture: 4.278 px Relative Mode

Scan reflectance profile #0 analysis

Scan reflectance profile grade 0.0 (F)

Parameter	Value	Grade
Decode	Yes	4.0 (A)
Rmax	1.0000	N/A
Rmin	0.0627	4.0 (A)
Global Threshold	0.9373	N/A
Symbol Contrast	0.9373	4.0 (A)
Min. edge contrast	0.5216	4.0 (A)
Modulation	0.5565	2.0 (C)
Defects	0.0251	4.0 (A)
Decodability	0.0422	0.0 (F)
Quiet zone	-1.3279	4.0 (A)

Resources - Links are case sensitive

GS1 Specifications For SSCC Labels - 2018
www.gs1.org/docs/barcodes/GS1_General_Specifications.pdf

Laymans Guide to Barcode Verification
www.scanalyst.com/resources/LaymansGuidetoANSI_rev_2002.pdf

Additional helpful information www.Goodbarcodes.com

SCANALYST 3 inspection processes are based on current AIDC standards such as ISO ISO/IEC 15415, ISO/IEC 15416, ISO/IEC 15426-1, ISO/IEC 15426-2, ISO/IEC TR 29158 (AIM DPM) and GS1 General Specifications for multiple field data carriers.
 Copyright Automatic Identification Systems, Inc. 1993-2018, a U.S.A. based veteran owned company www.scanalyst.com



Scan For Help





SCANALYST 3 Report



Inspected Image

This barcode could not be read or verified. The SSCC barcode data had to be key entered

*The Overall Grade Is The Average Of 10 Scan Profile Grades

Barcode Print Quality-Overall
Barcode Data Content
Barcode Physical Detail

Unreadable
00006757167008897995
Physical Details are not available when the SSCC is manually entered

Scan Profile Details are not available when the SSCC is manually entered

Resources - Links are case sensitive

GS1 Specifications For SSCC Labels - 2018
www.gs1.org/docs/barcodes/GS1_General_Specifications.pdf

Laymans Guide to Barcode Verification
www.scanalyst.com/resources/LaymansGuidetoANSI_rev_2002.pdf

Additional helpful information www.Goodbarcodes.com

SCANALYST 3 inspection processes are based on current AIDC standards such as ISO ISO/IEC 15415, ISO/IEC 15416, ISO/IEC 15426-1, ISO/IEC 15426-2, ISO/IEC TR 29158 (AIM DPM) and GS1 General Specifications for multiple field data carriers.
Copyright Automatic Identification Systems, Inc. 1993-2018, a U.S.A. based veteran owned company www.scanalyst.com



[Scan For Help](#)





SCANALYST 3 Report



Inspected Image

*The Overall Grade Is The Average Of 10 Scan Profile Grades

Barcode Print Quality-Overall
Barcode Data Content
Barcode Physical Detail

1.1 (D)
00006757167008894703 AI - 00 Title - SSCC Length - 20
X Dim 0.018 Height 1.044 Width 2.776

Verification Report

Code Type: Code 128
 Overall Symbol Grade: 1.1 (D)
 Aperture: 4.423 px Relative Mode

Scan reflectance profile #0 analysis

Scan reflectance profile grade 1.0 (D)

Parameter	Value	Grade
Decode	Yes	4.0 (A)
Rmax	0.5922	N/A
Rmin	0.0157	4.0 (A)
Global Threshold	0.5765	N/A
Symbol Contrast	0.5765	3.0 (B)
Min. edge contrast	0.2745	4.0 (A)
Modulation	0.4762	1.0 (D)
Defects	0.0612	4.0 (A)
Decodability	0.8073	4.0 (A)
Quiet zone	-1.2557	4.0 (A)

Resources - Links are case sensitive

GS1 Specifications For SSCC Labels - 2018
www.gs1.org/docs/barcodes/GS1_General_Specifications.pdf

Laymans Guide to Barcode Verification
www.scanalyst.com/resources/LaymansGuidetoANSI_rev_2002.pdf

Additional helpful information www.Goodbarcodes.com

SCANALYST 3 inspection processes are based on current AIDC standards such as ISO ISO/IEC 15415, ISO/IEC 15416, ISO/IEC 15426-1, ISO/IEC 15426-2, ISO/IEC TR 29158 (AIM DPM) and GS1 General Specifications for multiple field data carriers.
 Copyright Automatic Identification Systems, Inc. 1993-2018, a U.S.A. based veteran owned company www.scanalyst.com



Scan For Help





SCANALYST 3 Report



Inspected Image

*The Overall Grade Is The Average Of 10 Scan Profile Grades

Barcode Print Quality-Overall
Barcode Data Content
Barcode Physical Detail

0.0 (F)
00006757167008710041 AI - 00 Title - SSCC Length - 20
X Dim 0.018 Height 1.084 Width 2.765

Verification Report

Code Type: Code 128
 Overall Symbol Grade: 0.0 (F)
 Aperture: 4.433 px Relative Mode

Scan reflectance profile #0 analysis

Scan reflectance profile grade 0.0 (F)

Parameter	Value	Grade
Decode	No	0.0 (F)
Rmax	1.0000	N/A
Rmin	0.0353	4.0 (A)
Global Threshold	0.9647	N/A
Symbol Contrast	0.9647	4.0 (A)
Min. edge contrast	0.0824	0.0 (F)
Modulation	0.0854	0.0 (F)
Defects	0.4878	0.0 (F)
Decodability	0.0000	0.0 (F)
Quiet zone	-1.2649	4.0 (A)

Resources - Links are case sensitive

GS1 Specifications For SSCC Labels - 2018
www.gs1.org/docs/barcodes/GS1_General_Specifications.pdf

Laymans Guide to Barcode Verification
www.scanalyst.com/resources/LaymansGuidetoANSI_rev_2002.pdf

Additional helpful information www.Goodbarcodes.com

SCANALYST 3 inspection processes are based on current AIDC standards such as ISO ISO/IEC 15415, ISO/IEC 15416, ISO/IEC 15426-1, ISO/IEC 15426-2, ISO/IEC TR 29158 (AIM DPM) and GS1 General Specifications for multiple field data carriers.
 Copyright Automatic Identification Systems, Inc. 1993-2018, a U.S.A. based veteran owned company www.scanalyst.com



Scan For Help



SCANALYST 3 Report



Inspected Image

The barcode height is supposed to be 1.25 in. high. This barcode is out of spec which impacts the ability to scan it and handle the package automatically.

*The Overall Grade Is The Average Of 10 Scan Profile Grades

Barcode Print Quality-Overall
Barcode Data Content
Barcode Physical Detail

0.0 (F)
00006757167008749928
AI - 00 Title - SSCC Length - 20
X Dim 0.016 Height 0.346 Width 2.562

Verification Report

Code Type: Code 128
 Overall Symbol Grade: 0.0 (F)
 Aperture: 3.977 px Relative Mode

Scan reflectance profile #0 analysis

Scan reflectance profile grade 0.0 (F)

Parameter	Value	Grade
Decode	No	0.0 (F)
Rmax	0.6667	N/A
Rmin	0.0196	4.0 (A)
Global Threshold	0.6471	N/A
Symbol Contrast	0.6471	3.0 (B)
Min. edge contrast	0.3098	4.0 (A)
Modulation	0.4788	1.0 (D)
Defects	0.1091	4.0 (A)
Decodability	0.0314	0.0 (F)
Quiet zone	-1.2017	4.0 (A)

Resources - Links are case sensitive

GS1 Specifications For SSCC Labels - 2018
www.gs1.org/docs/barcodes/GS1_General_Specifications.pdf

Laymans Guide to Barcode Verification
www.scanalyst.com/resources/LaymansGuidetoANSI_rev_2002.pdf

Additional helpful information www.Goodbarcodes.com

SCANALYST 3 inspection processes are based on current AIDC standards such as ISO ISO/IEC 15415, ISO/IEC 15416, ISO/IEC 15426-1, ISO/IEC 15426-2, ISO/IEC TR 29158 (AIM DPM) and GS1 General Specifications for multiple field data carriers.
 Copyright Automatic Identification Systems, Inc. 1993-2018, a U.S.A. based veteran owned company www.scanalyst.com



Scan For Help





SCANALYST 3 Report



Inspected Image

*The Overall Grade Is The Average Of 10 Scan Profile Grades

Barcode Print Quality-Overall
Barcode Data Content
Barcode Physical Detail

1.2 (D)
00006757167008733835
AI - 00 Title - SSCC Length - 20
X Dim 0.018 Height 1.072 Width 2.733

Verification Report

Code Type: Code 128
 Overall Symbol Grade: 1.2 (D)
 Aperture: 4.355 px Relative Mode

Scan reflectance profile #0 analysis

Scan reflectance profile grade 0.0 (F)

Parameter	Value	Grade
Decode	Yes	4.0 (A)
Rmax	0.6902	N/A
Rmin	0.0196	4.0 (A)
Global Threshold	0.6706	N/A
Symbol Contrast	0.6706	3.0 (B)
Min. edge contrast	0.4549	4.0 (A)
Modulation	0.6784	3.0 (B)
Defects	0.3860	0.0 (F)
Decodability	0.6751	4.0 (A)
Quiet zone	-1.2593	4.0 (A)

Resources - Links are case sensitive

GS1 Specifications For SSCC Labels - 2018
www.gs1.org/docs/barcodes/GS1_General_Specifications.pdf

Laymans Guide to Barcode Verification
www.scanalyst.com/resources/LaymansGuidetoANSI_rev_2002.pdf

Additional helpful information www.Goodbarcodes.com

SCANALYST 3 inspection processes are based on current AIDC standards such as ISO ISO/IEC 15415, ISO/IEC 15416, ISO/IEC 15426-1, ISO/IEC 15426-2, ISO/IEC TR 29158 (AIM DPM) and GS1 General Specifications for multiple field data carriers.
 Copyright Automatic Identification Systems, Inc. 1993-2018, a U.S.A. based veteran owned company www.scanalyst.com



Scan For Help





SCANALYST 3 Report



Inspected Image

*The Overall Grade Is The Average Of 10 Scan Profile Grades

- Barcode Print Quality-Overall**
- Barcode Data Content**
- Barcode Physical Detail**

2.2 (C)		
00006757167008727483		
AI - 00	Title - SSCC	Length - 20
X Dim 0.018	Height 1.086	Width 2.757

Verification Report

Code Type: Code 128
 Overall Symbol Grade: 2.2 (C)
 Aperture: 4.393 px Relative Mode

Scan reflectance profile #0 analysis

Scan reflectance profile grade 2.0 (C)

Parameter	Value	Grade
Decode	Yes	4.0 (A)
Rmax	0.5529	N/A
Rmin	0.0157	4.0 (A)
Global Threshold	0.5373	N/A
Symbol Contrast	0.5373	2.0 (C)
Min. edge contrast	0.3647	4.0 (A)
Modulation	0.6788	3.0 (B)
Defects	0.1168	4.0 (A)
Decodability	0.8039	4.0 (A)
Quiet zone	-1.2898	4.0 (A)

Resources - Links are case sensitive

GS1 Specifications For SSCC Labels - 2018
www.gs1.org/docs/barcodes/GS1_General_Specifications.pdf

Laymans Guide to Barcode Verification
www.scanalyst.com/resources/LaymansGuidetoANSI_rev_2002.pdf

Additional helpful information www.Goodbarcodes.com

SCANALYST 3 inspection processes are based on current AIDC standards such as ISO ISO/IEC 15415, ISO/IEC 15416, ISO/IEC 15426-1, ISO/IEC 15426-2, ISO/IEC TR 29158 (AIM DPM) and GS1 General Specifications for multiple field data carriers.
 Copyright Automatic Identification Systems, Inc. 1993-2018, a U.S.A. based veteran owned company www.scanalyst.com



Scan For Help



SCANALYST 3 Report



Inspected Image

*The Overall Grade Is The Average Of 10 Scan Profile Grades

Barcode Print Quality-Overall
Barcode Data Content
Barcode Physical Detail

0.9 (D)
00006757167008808960 AI - 00 Title - SSCC Length - 20
X Dim 0.018 Height 1.086 Width 2.771

Verification Report

Code Type: Code 128
 Overall Symbol Grade: 0.9 (D)
 Aperture: 4.441 px Relative Mode

Scan reflectance profile #0 analysis

Scan reflectance profile grade 2.0 (C)

Parameter	Value	Grade
Decode	Yes	4.0 (A)
Rmax	0.9961	N/A
Rmin	0.0392	4.0 (A)
Global Threshold	0.9569	N/A
Symbol Contrast	0.9569	4.0 (A)
Min. edge contrast	0.5647	4.0 (A)
Modulation	0.5902	2.0 (C)
Defects	0.1352	4.0 (A)
Decodability	0.7238	4.0 (A)
Quiet zone	1.2901	4.0 (A)

Resources - Links are case sensitive

GS1 Specifications For SSCC Labels - 2018
www.gs1.org/docs/barcodes/GS1_General_Specifications.pdf

Laymans Guide to Barcode Verification
www.scanalyst.com/resources/LaymansGuidetoANSI_rev_2002.pdf

Additional helpful information www.Goodbarcodes.com

SCANALYST 3 inspection processes are based on current AIDC standards such as ISO ISO/IEC 15415, ISO/IEC 15416, ISO/IEC 15426-1, ISO/IEC 15426-2, ISO/IEC TR 29158 (AIM DPM) and GS1 General Specifications for multiple field data carriers.
 Copyright Automatic Identification Systems, Inc. 1993-2018, a U.S.A. based veteran owned company www.scanalyst.com



Scan For Help





SCANALYST 3 Report



Inspected Image

This barcode could not be read or verified. The SSCC barcode data had to be key entered

*The Overall Grade Is The Average Of 10 Scan Profile Grades

Barcode Print Quality-Overall
Barcode Data Content
Barcode Physical Detail

Unreadable
00006757167008863938
Physical Details are not available when the SSCC is manually entered

Scan Profile Details are not available when the SSCC is manually entered

Resources - Links are case sensitive

GS1 Specifications For SSCC Labels - 2018
www.gs1.org/docs/barcodes/GS1_General_Specifications.pdf

Laymans Guide to Barcode Verification
www.scanalyst.com/resources/LaymansGuidetoANSI_rev_2002.pdf

Additional helpful information www.Goodbarcodes.com

SCANALYST 3 inspection processes are based on current AIDC standards such as ISO ISO/IEC 15415, ISO/IEC 15416, ISO/IEC 15426-1, ISO/IEC 15426-2, ISO/IEC TR 29158 (AIM DPM) and GS1 General Specifications for multiple field data carriers.
Copyright Automatic Identification Systems, Inc. 1993-2018, a U.S.A. based veteran owned company www.scanalyst.com



[Scan For Help](#)





SCANALYST 3 Report



Inspected Image

This barcode could not be read or verified. The SSCC barcode data had to be key entered

*The Overall Grade Is The Average Of 10 Scan Profile Grades

Barcode Print Quality-Overall
Barcode Data Content
Barcode Physical Detail

Unreadable
00006757167008863938
Physical Details are not available when the SSCC is manually entered

Scan Profile Details are not available when the SSCC is manually entered

Resources - Links are case sensitive

GS1 Specifications For SSCC Labels - 2018
www.gs1.org/docs/barcodes/GS1_General_Specifications.pdf

Laymans Guide to Barcode Verification
www.scanalyst.com/resources/LaymansGuidetoANSI_rev_2002.pdf

Additional helpful information www.Goodbarcodes.com

SCANALYST 3 inspection processes are based on current AIDC standards such as ISO ISO/IEC 15415, ISO/IEC 15416, ISO/IEC 15426-1, ISO/IEC 15426-2, ISO/IEC TR 29158 (AIM DPM) and GS1 General Specifications for multiple field data carriers.
Copyright Automatic Identification Systems, Inc. 1993-2018, a U.S.A. based veteran owned company www.scanalyst.com



[Scan For Help](#)





SCANALYST 3 Report



Inspected Image

This barcode could not be read or verified. The SSCC barcode data had to be key entered

*The Overall Grade Is The Average Of 10 Scan Profile Grades

Barcode Print Quality-Overall
Barcode Data Content
Barcode Physical Detail

Unreadable
00006757167008750870
Physical Details are not available when the SSCC is manually entered

Scan Profile Details are not available when the SSCC is manually entered

Resources - Links are case sensitive

GS1 Specifications For SSCC Labels - 2018
www.gs1.org/docs/barcodes/GS1_General_Specifications.pdf

Laymans Guide to Barcode Verification
www.scanalyst.com/resources/LaymansGuidetoANSI_rev_2002.pdf

Additional helpful information www.Goodbarcodes.com

SCANALYST 3 inspection processes are based on current AIDC standards such as ISO ISO/IEC 15415, ISO/IEC 15416, ISO/IEC 15426-1, ISO/IEC 15426-2, ISO/IEC TR 29158 (AIM DPM) and GS1 General Specifications for multiple field data carriers.
Copyright Automatic Identification Systems, Inc. 1993-2018, a U.S.A. based veteran owned company www.scanalyst.com



Scan For Help





SCANALYST 3 Report



Inspected Image

This barcode could not be read or verified. The SSCC barcode data had to be key entered

*The Overall Grade Is The Average Of 10 Scan Profile Grades

Barcode Print Quality-Overall
Barcode Data Content
Barcode Physical Detail

Unreadable
00006757167025493347
Physical Details are not available when the SSCC is manually entered

Scan Profile Details are not available when the SSCC is manually entered

Resources - Links are case sensitive

GS1 Specifications For SSCC Labels - 2018
www.gs1.org/docs/barcodes/GS1_General_Specifications.pdf

Laymans Guide to Barcode Verification
www.scanalyst.com/resources/LaymansGuidetoANSI_rev_2002.pdf

Additional helpful information www.Goodbarcodes.com

SCANALYST 3 inspection processes are based on current AIDC standards such as ISO ISO/IEC 15415, ISO/IEC 15416, ISO/IEC 15426-1, ISO/IEC 15426-2, ISO/IEC TR 29158 (AIM DPM) and GS1 General Specifications for multiple field data carriers.
Copyright Automatic Identification Systems, Inc. 1993-2018, a U.S.A. based veteran owned company www.scanalyst.com



[Scan For Help](#)





SCANALYST 3 Report



Inspected Image

*The Overall Grade Is The Average Of 10 Scan Profile Grades

Barcode Print Quality-Overall
Barcode Data Content
Barcode Physical Detail

1.6 (C)
00006757167008741731 AI - 00 Title - SSCC Length - 20
X Dim 0.017 Height 1.064 Width 2.723

Verification Report

Code Type: Code 128
 Overall Symbol Grade: 1.6 (C)
 Aperture: 4.339 px Relative Mode

Scan reflectance profile #0 analysis

Scan reflectance profile grade 3.0 (B)

Parameter	Value	Grade
Decode	Yes	4.0 (A)
Rmax	1.0000	N/A
Rmin	0.0392	4.0 (A)
Global Threshold	0.9608	N/A
Symbol Contrast	0.9608	4.0 (A)
Min. edge contrast	0.6431	4.0 (A)
Modulation	0.6694	3.0 (B)
Defects	0.0449	4.0 (A)
Decodability	0.5890	3.0 (B)
Quiet zone	1.3071	4.0 (A)

Resources - Links are case sensitive

GS1 Specifications For SSCC Labels - 2018
www.gs1.org/docs/barcodes/GS1_General_Specifications.pdf

Laymans Guide to Barcode Verification
www.scanalyst.com/resources/LaymansGuidetoANSI_rev_2002.pdf

Additional helpful information www.Goodbarcodes.com

SCANALYST 3 inspection processes are based on current AIDC standards such as ISO ISO/IEC 15415, ISO/IEC 15416, ISO/IEC 15426-1, ISO/IEC 15426-2, ISO/IEC TR 29158 (AIM DPM) and GS1 General Specifications for multiple field data carriers.
 Copyright Automatic Identification Systems, Inc. 1993-2018, a U.S.A. based veteran owned company www.scanalyst.com



[Scan For Help](#)





SCANALYST 3 Report



Inspected Image

This barcode could not be read or verified. The SSCC barcode data had to be key entered

*The Overall Grade Is The Average Of 10 Scan Profile Grades

Barcode Print Quality-Overall
Barcode Data Content
Barcode Physical Detail

Unreadable
00006757167008806713
Physical Details are not available when the SSCC is manually entered

Scan Profile Details are not available when the SSCC is manually entered

Resources - Links are case sensitive

GS1 Specifications For SSCC Labels - 2018
www.gs1.org/docs/barcodes/GS1_General_Specifications.pdf

Laymans Guide to Barcode Verification
www.scanalyst.com/resources/LaymansGuidetoANSI_rev_2002.pdf

Additional helpful information www.Goodbarcodes.com

SCANALYST 3 inspection processes are based on current AIDC standards such as ISO ISO/IEC 15415, ISO/IEC 15416, ISO/IEC 15426-1, ISO/IEC 15426-2, ISO/IEC TR 29158 (AIM DPM) and GS1 General Specifications for multiple field data carriers.
 Copyright Automatic Identification Systems, Inc. 1993-2018, a U.S.A. based veteran owned company www.scanalyst.com

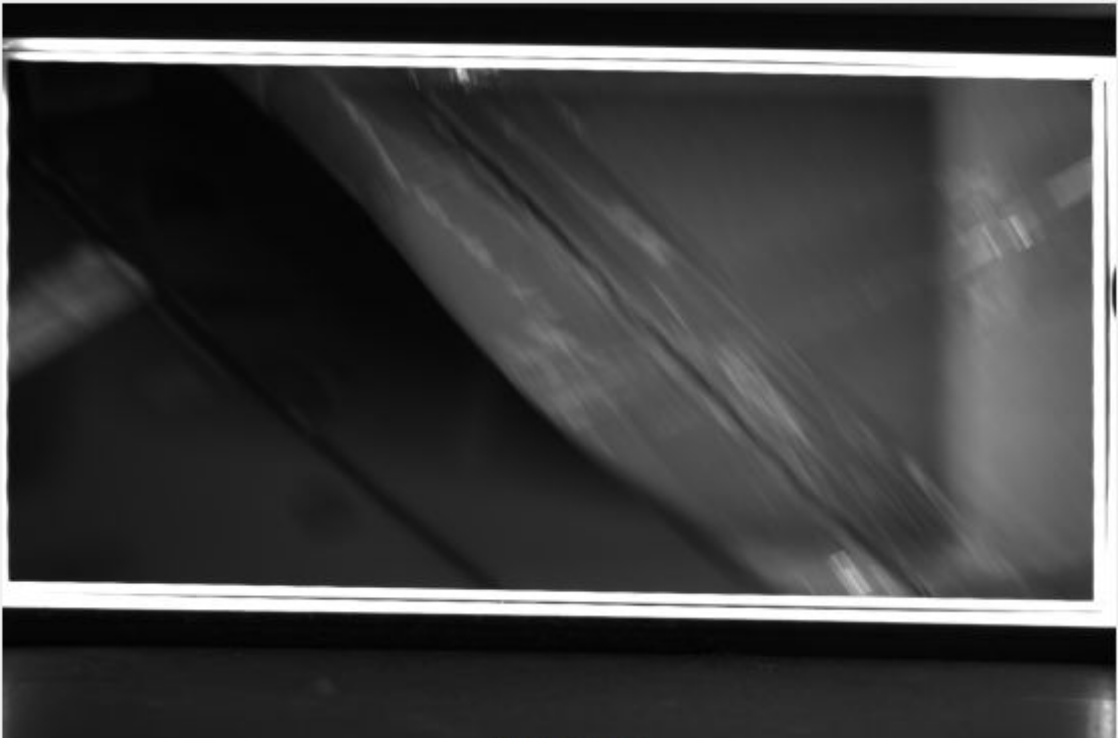


[Scan For Help](#)





SCANALYST 3 Report



Inspected Image

This barcode could not be read or verified. The SSCC barcode data had to be key entered

*The Overall Grade Is The Average Of 10 Scan Profile Grades

Barcode Print Quality-Overall
Barcode Data Content
Barcode Physical Detail

Unreadable
00006757167008747474
Physical Details are not available when the SSCC is manually entered

Scan Profile Details are not available when the SSCC is manually entered

Resources - Links are case sensitive

GS1 Specifications For SSCC Labels - 2018
www.gs1.org/docs/barcodes/GS1_General_Specifications.pdf

Laymans Guide to Barcode Verification
www.scanalyst.com/resources/LaymansGuidetoANSI_rev_2002.pdf

Additional helpful information www.Goodbarcodes.com

SCANALYST 3 inspection processes are based on current AIDC standards such as ISO ISO/IEC 15415, ISO/IEC 15416, ISO/IEC 15426-1, ISO/IEC 15426-2, ISO/IEC TR 29158 (AIM DPM) and GS1 General Specifications for multiple field data carriers.
Copyright Automatic Identification Systems, Inc. 1993-2018, a U.S.A. based veteran owned company www.scanalyst.com



[Scan For Help](#)





SCANALYST 3 Report



Inspected Image

*The Overall Grade Is The Average Of 10 Scan Profile Grades

Barcode Print Quality-Overall
Barcode Data Content
Barcode Physical Detail

0.0 (F)
00006757167008671168 AI - 00 Title - SSCC Length - 20
X Dim 0.018 Height 1.071 Width 2.752

Verification Report

Code Type: Code 128
 Overall Symbol Grade: 0.0 (F)
 Aperture: 4.432 px Relative Mode

Scan reflectance profile #0 analysis

Scan reflectance profile grade 0.0 (F)

Parameter	Value	Grade
Decode	No	0.0 (F)
Rmax	1.0000	N/A
Rmin	0.1020	4.0 (A)
Global Threshold	0.8980	N/A
Symbol Contrast	0.8980	4.0 (A)
Min. edge contrast	0.7216	4.0 (A)
Modulation	0.8035	4.0 (A)
Defects	0.0131	4.0 (A)
Decodability	0.0110	0.0 (F)
Quiet zone	1.2910	4.0 (A)

Resources - Links are case sensitive

GS1 Specifications For SSCC Labels - 2018
www.gs1.org/docs/barcodes/GS1_General_Specifications.pdf

Laymans Guide to Barcode Verification
www.scanalyst.com/resources/LaymansGuidetoANSI_rev_2002.pdf

Additional helpful information www.Goodbarcodes.com

SCANALYST 3 inspection processes are based on current AIDC standards such as ISO ISO/IEC 15415, ISO/IEC 15416, ISO/IEC 15426-1, ISO/IEC 15426-2, ISO/IEC TR 29158 (AIM DPM) and GS1 General Specifications for multiple field data carriers.
 Copyright Automatic Identification Systems, Inc. 1993-2018, a U.S.A. based veteran owned company www.scanalyst.com



Scan For Help





SCANALYST 3 Report



Inspected Image

This barcode could not be read or verified. The SSCC barcode data had to be key entered

*The Overall Grade Is The Average Of 10 Scan Profile Grades

Barcode Print Quality-Overall
Barcode Data Content
Barcode Physical Detail

Unreadable
00006757167026276284
Physical Details are not available when the SSCC is manually entered

Scan Profile Details are not available when the SSCC is manually entered

Resources - Links are case sensitive

GS1 Specifications For SSCC Labels - 2018
www.gs1.org/docs/barcodes/GS1_General_Specifications.pdf

Laymans Guide to Barcode Verification
www.scanalyst.com/resources/LaymansGuidetoANSI_rev_2002.pdf

Additional helpful information www.Goodbarcodes.com

SCANALYST 3 inspection processes are based on current AIDC standards such as ISO ISO/IEC 15415, ISO/IEC 15416, ISO/IEC 15426-1, ISO/IEC 15426-2, ISO/IEC TR 29158 (AIM DPM) and GS1 General Specifications for multiple field data carriers.
Copyright Automatic Identification Systems, Inc. 1993-2018, a U.S.A. based veteran owned company www.scanalyst.com



Scan For Help

