

解放



中国一汽

浙E·68079



OPPO Reno3 Pro 5G



T L L U 4 0 7 5 2 9 9



OPPO Reno3 Pro 5G

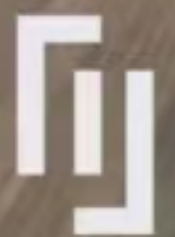
TLLU4075299

TL INTERNATIONAL
CONTAINER MFG



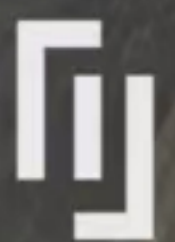
OPPO Reno3 Pro 5G

紫色结束(二分之一)



OPPO Reno3 Pro 5G

黄色结束



OPPO Reno3 Pro 5G



OPPO Reno3 Pro 5G



TLLU 407529 9
45G1

MAX. GROSS	32.500 KGS
	71.650 LBS
TARE	3.700 KGS
	8.160 LBS
NET	28.800 KGS
	63.490 LBS
CU. CAP.	76.4 CU.M.
	2.700 CU.FT.

FS

CIMC 中集

浙 E
8679挂



TLLU 407529 9
45G1

MAX. GROSS 32.500 KGS
71.650 LBS

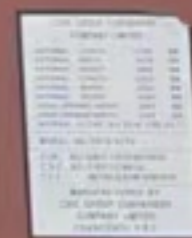
TARE 3.700 KGS
8.160 LBS

NET 28.800 KGS
63.490 LBS

CU. CAP. 76.4 CUM.
2.700 CUFT.



CORTEN STEEL
CONTAINER



CIMC 中集 通

浙 E
8679 挂



OPPO Reno3 Pro 5G

Reefer Temperature Required. 冷藏温度

°C. °F.

Class 等级, IMDG Page 危规页码, UN No. 联合国编号, Flashpoint 闪点

CONTAINER LOAD PLAN




CHINA MARINE SHIPPING AGENCY SHANGHAI COMPANY

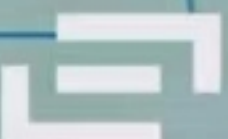
上海中外运船务代理有限公司

(5) Shipper's/Packer's Copy 发货人/装箱人联

装箱单

Ship's Name/Voy No. 船名/航次 EVER FUTURE 1110-020E		Port of Loading 装港 SHANGHAI/Y40	Port of Discharge 卸港 USLAX	Place of Delivery 交货地 LOS ANGELES, CA	SHIPPER'S/PACKER'S DECLARATIONS: We hereby declare that the container has been thoroughly cleaned without any evidence of cargoes of previous shipment prior to vaning and cargoes has been properly stuffed and secured.					
Container No. 箱号 TLLU4075299		Bill of Lading No. 提单号	Packages & Packing 件数与包装	Gross Weight 毛重	Measurements 尺码	Description of Goods 货名	Marks & Numbers 唛头			
Seal No. 封号 EMCRJL7263		<div style="text-align: center;"> <p>Front 前</p>  <p>Door 门</p> </div>		<div style="text-align: center;"> <p>EGLV142400550230</p> <p>W17 L24E 68079 金球</p> </div>				清关		
Cont. Size 箱型 20' 40' 45' 40	Cont. Type. 箱类 GP=普通箱 TK=油罐箱 RF=冷藏箱 PF=平板箱 OT=开顶箱 HC=高箱 FR=框架箱 HT=挂衣箱									
ISO Code For Container Size/Type. 箱型/箱类ISO标准代码 HC										
Packer's Name/Address 装箱人名称/地址 自非车安徽广德辰宇 安徽省宣城市广德经济开发区荆汤路60										
TEL NO. 电话号码		Received By Drayman 驾驶员签收及车号	Total Packages 总件数	Total Cargo Wt 总货重	Total Meas 总尺码	Remarks: 备注 AHYH24020012				
Packing Date. 装箱日期 2024-03-27 00:00		Received By Terminals/Date Of Receipt 码头收箱签收和收箱日期		Cont. Tare Wt 集装箱皮重 3.700	Cgo/Cont Total Wt 货/箱总重量					
Packed BY. 装箱人签名										

OPPO Reno3 Pro 5G



Class 等级	IMDG Page 危规页码	UN NO. 联合国编号	Flashpoint 闪点
-------------	-------------------	-----------------	------------------

装 箱 单

(1) Terminal's Copy
码头联

Ship 's Name/Voy No. 船名/航次 EVER FUTURE 1110-020E	*Port of Loading 装港 SHANGHAI, CHINA	*Port of Discharge 卸港 LOS ANGELES, CA	*Place of Delivery 交货地	SHIPPER' S/PACKER' S DECLARATIONS:We hereby declare that the container has been thoroughly cleaned without any evidence of cargoes of previous shipment prior to vanning and cargoes has been properly stuffed and secures		
---	---	---	---------------------------	--	--	--

Container No.箱号 TLLU4075299	*Bill of Lading No. 提单号	Packages&Packing 件数与包装	Gross Weight 毛 重	Measurements 尺 码	Description of Goods 货 名	Marks&Number 唛 头	
Seal No. 封号 EMCRJL7263	EGLV142400550230	450	4593.25	63.2			
Cont.Size箱型 20' 40' 45'							Cont.Type 箱类 GP=普通箱 TK=油罐箱 RF=冷藏箱 PF=平板箱 OT=开顶箱 HC=高箱 FR=框架箱 HT=挂衣箱
ISO Code For Container Size/Type. 箱型/箱类ISO标准代码 40HQ							Packer' s Name/Address 装箱人名称/地址

Front
前

Door
门

Packing Date. 装箱日期	Received By Drayman 驾驶员签收及车号	Total Packages 总件数	Total Cargo Wt 总货重	Total Meas 总尺码	Remarks: 备注
Packed BY. 装箱人签名	Received By Terminals/Date Of Receipt 码头收箱签收和收箱日期	Cont Tare Wt 集装箱皮重	Cgo/Cont Total Wt 货/箱总重量		