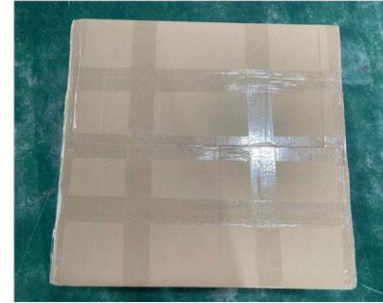


## Vacuum Packing Guidelines: Bedding

- Product should be in customer-facing packaging and then placed with a vacuum-packed bag.
  - \*items should NOT be individually vacuum-packed within customer-facing packaging
  - \*\*ONLY 1 unit per vacuum pack bag. DO NOT include multiple units of the product within the vacuum-packed bag
- Gauge of Vacuum-Packed Bag:
  - Compression bag = 11 mil
  - Stretch film = 6 mil
  - \*Bag must be able to be torn open by hand
- Verbiage to Include on Bag:
  - “DO NOT CUT” on main area of bag (refer to image 4 to the right)
  - Dotted Line with CUT OR TEAR HERE at edge of bag (refer to image 4 to the right)
  - REMOVE VACUUM PACKING BEFORE FLOOR PLACEMENT OR SHIPPING
    - \*or similar verbiage
- Sticker Needed on Box:
  - VACUUM PACKED PRODUCT

## Compression Packaging and Removal Instructions

1. Carton has extra tape and is well sealed to prevent any expansion in transit.



2. Open carton and remove compressed sets from carton.



3. Remove stretch wrap and compression packaging.



4. Associate cuts bag along “CUT HERE” line  
NOTE! package can also be opened by hand by tearing along “CUT HERE” line.



Package expands and is ready for display.