



Work Sheet - Import Container



Container No.: HLXU8328805 **Type:** Dotcom **Bin Loc:** R8805
Ctnr Size: 40'HQ **Port Pickup Date:** 2/10/2026 **Door No.:** 330
Shipment ID: EE25121826 **DC Arrived Date:** 2/11/2026 **From Loc:** SV2
Total Ctn: 1029 **Target Offload Date:** 02/19/2026 **To Loc:** SD2
Total Pallets: 10 **Sales Order No:** 2112 **Priority:**
Container Code: **Notes:**

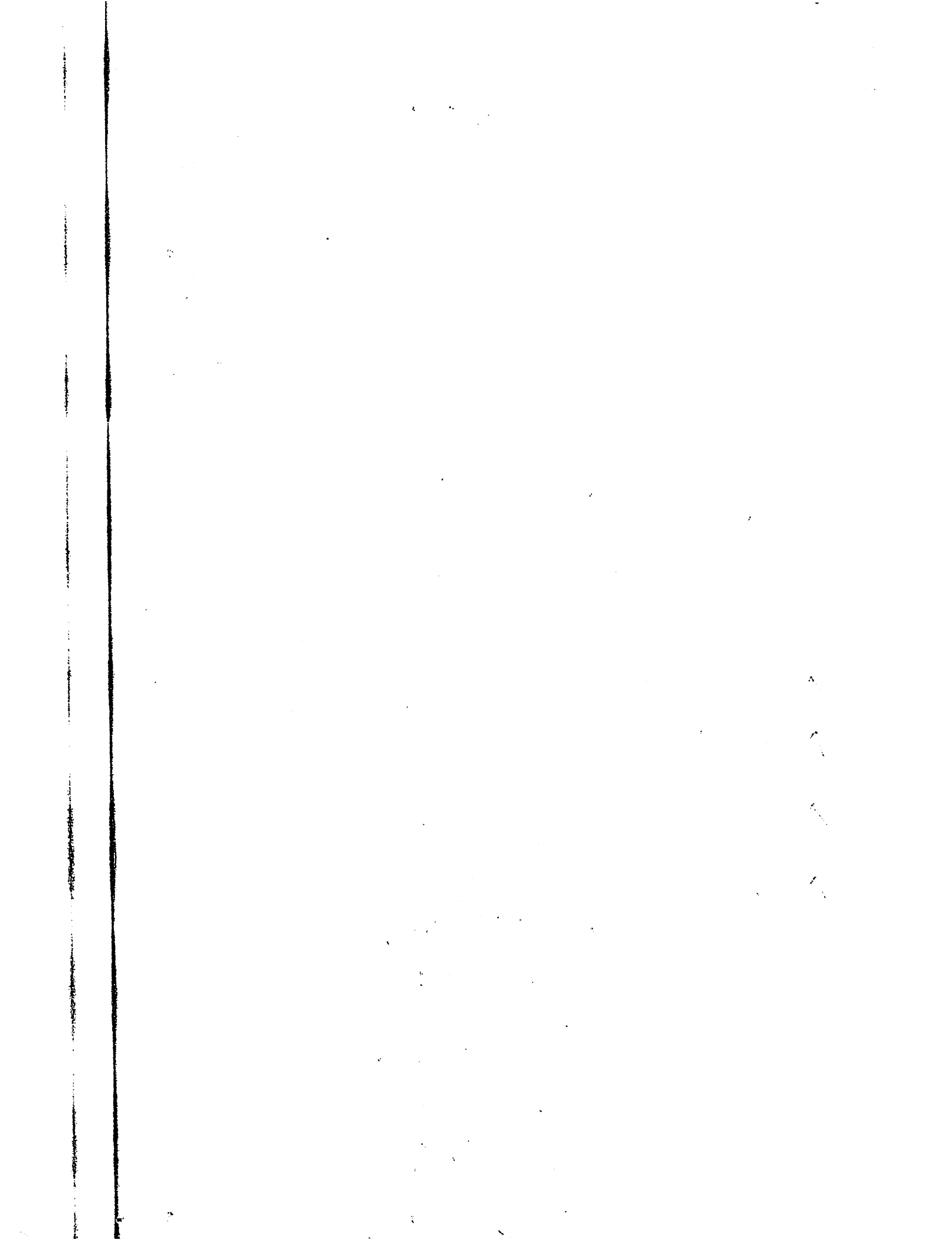
Item No.	PO No.	UPC	Description	Rev (Desc)	Autom ation	ASRS Storage	Case Pack	Ctn	Ctn/Layer	Layer/Pit	Ctn/Pallet	Pallet Height	Variance
KL10-3562	KLC-250923	022164424225	100% Polyester Printed 6pcs Comforter Set		Yes	No	1	400	4	5	20	✓	
KL10-3563	KLC-250923	022164424232	100% Polyester Printed 6pcs Comforter Set		Yes	No	1	230	4	4	16	✓	-1
KL10-3564	KLC-250923	022164424249	100% Polyester Printed 6pcs Comforter Set		Yes	No	1	170	4	4	16	✓	+1
MPE10-730	MPE-250932-2	086569023308	100% Polyester Microfiber Printed 9pcs Comforter Set		Yes	Yes	1	229	8 6	5 4	40 24	✓ 57.00	-6

Offload Name:

Antonio

Verify By:

Jaky



RECEIVING OFFLOADING

DATE:

2/13/26

RBUCKET:

R8805

START TIME:

6:37

END TIME:

9:50

Unloader(s)

Antonio

CASE COUNT:

1029

SKU COUNT:

4

VERIFIER

1 Jaky

2

3

4

NOTES:

KL10-3563 (-1) mpe10-730 (-6)

KL10-3564 (+1)

		Offload Date:		R-Bucket:	R 8805	Door:	330
		2-12-26					
Name	Pallets Counted	Pallets In EEC	Pallets Remaining	Date	Start Time:	Finish Time:	
1 Mike				2-13-26			

Reminder

* Complete this form correctly. * Complete Equipment Checklist. * Check INTR at end of every R-Bucket. *

R-Bucket:		R-Bucket:		R-Bucket:		R-Bucket:	
Location	Label	Location	Label	Location	Label	Location	Label
BN 28-1C	1	BK 26-1C	36				
BN 28-1A	8	BK 27-1A	40				
BN 22-1C	2	BK 27-1C	39				
BN 22-1A	9	BK 19-1A	38				
BN 24-1A	3	BK 19-1C	37				
BN 23-1C	10	BK 29-1A	32				
BN 30-1C	4	BK 29-1C	33				
BN 30-1A	11	BK 32-1A	34				
BN 29-1A	18	BK 32-1C	42				
BN 27-1C	15	BK 37-1A	24				
BN 21-1A	19	BK 37-1C	44				
BN 20-1C	16	BK 43-1A	25				
BN 19-1A	20	BK 43-1C	45				
BN 32-1C	5	BK 31-2C	41				
BN 32-1A	12	BK 31-1A	43				
BL 29-1C	6	BQ 43-2A	52				
BL 29-1A	13	BQ 43-1C	46				
BL 23-1C	7	BQ 43-1A	47				
BL 23-1A	14	BQ 42-1C	48				
BL 24-2A	23	BQ 42-1A	49				
BL 24-1C	17	BQ 29-1C	50				
BL 22-1C	27	BQ 29-1A	51				
BL 25-1A	28						
BL 32-1C	26						
BL 32-1A	21						
BL 28-1C	30						
BL 31-1C	22						
BL 44-1C	31						
BL 44-1A	29						
BL 48-1C	35						