

SHIP8, INC.

ATTN: ACCOUNTS PAYABLE
45875 NORTHPORT LOOP EAST
FREMONT, CA 94538
US

AP.SHIP8@SHIP8.COM

ORDER FROM

101009

LIFSTONE, LLC
440 E. WESTINGHOUSE BLVD.
CHARLOTTE, NC 28273
US

SHIP TO

SD3(3000),
SHIP8, INC.
ATTN: CHRISTINE JENKINS
311 INTERNATIONAL TRADE PARKWAY
PORT WENTWORTH, GA 31407
US

Buyer

Purchasing Dept

Terms

30 days

FOB

FOB Origin

Ship Via

Best possible

Line No.	Vendor Item No.	Vendor Item Description	Qty Ordered	UOM	Unit Price	Extended Price
1		This was one of the rentals that we returned to L This for damage to lift, bent forks and missing battery gate/cover	1.00	Each	2,725.38	

JMV. 9-22

Total Extended Price =



(855) 543-8663
www.LiftOne.net

Service Report

Date: 8/28/2025

LOCATION	SERVICING DEALER
SHIP8 @ E&E COMPANY LTD 550 NORTHPORT PKWY PORT WENTWORTH, GA, 31407-9286 Ship to SAP ID: 0002075806	Work Order Number: WO-02339343 Technician: Corey Riggsby Savannah - 206 PSSR:Troy Evans

WORK ORDER DETAILS			
Installed Product	RAYMOND-560-OPC030TT-560-12-B13153	Record Type	SORS - Repair
Installed Product Number	394334	Order Type	Field
Customer Unit Number	112460	Hour Meter Reading	
Purchase Order			

PROBLEM DESCRIPTION			
This for damage to lift, bent forks and missing battery gate/cover			
CAUSE			
Component		Fault Found	
REPAIR DESCRIPTION			

Labor

ACTIVITY TYPE	START TIME	END TIME	TOTAL HOURS	TOTAL LINE PRICE
				Total Labor Charges: \$0.00

Parts Used For Repairs

MATERIAL	DESCRIPTION	LINE QTY	LINE PRICE PER UNIT	TOTAL LINE PRICE
SERVICE-PART	114-009-622/042 Pair	1	\$0.00	\$2,725.38
				Total Parts: \$2,725.38
Total Work Order Charges (Not Including State or Local Taxes) : \$2,725.38				

Customer PO: _____

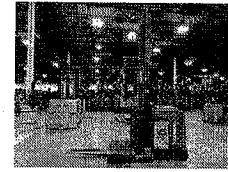
THIS DOCUMENT IS NOT AN INVOICE AND DOES NOT INCLUDE STATE OR LOCAL TAXES. CUSTOMER SIGNATURE REPRESENTS ACCEPTANCE OF SERVICES AS DESCRIBED HEREIN. LIFTONE LLC IS NOT LIABLE FOR ANY DAMAGE, LOSS, OR EXPENSE ARISING FROM OR OWING TO ANY DELAY IN DEALER PRODUCTION OR DELIVER OF GOODS OR SERVICES.



MAKE RAYMOND
MODEL 560-OPC30TT
YEAR 2012
HOUR METER 1 25694
HOUR METER 2 12248

HOUR METER 3 1116
FUEL ELECTRIC
VOLTAGE 36 VOLT
TIRES CUSHION
MAST TYPE 3 STAGE

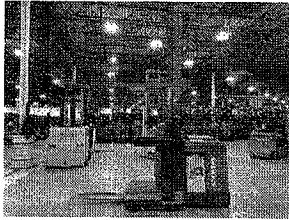
LOWERED HEIGHT 146
LIFT HEIGHT 348
HYDRAULIC FUNCTION 1-WAY
FORK LENGTH 42
LOCATION TWINSBURG



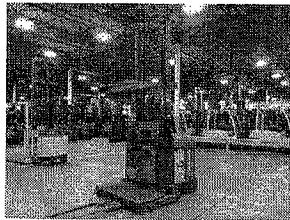
Category	Item	Status	Comments
PreCheck	ALARMS & HORN	●	
PreCheck	BATTERY	●	
PreCheck	CHAINS	●	
PreCheck	FORKS/ATT	●	BENT - REPLACE
PreCheck	DISPLAY	●	CODE 43
PreCheck	SAFETY SCREEN	●	
PreCheck	GUIDANCE SYSTEM	●	
PreCheck	HOSES	●	
PreCheck	IGNITION	●	
PreCheck	OUTRIGGERS	●	
PreCheck	PEDALS & FLOOR MAT	●	
PreCheck	STROBE LIGHT	●	
Components	DRIVE TIRE % REMAINING	●	80%
Components	DRIVE TIRES	●	
Components	LOAD WHEELS	●	CUTS & CHUNKS - MINOR - OK
Components	COVERS	●	DENTED / BENT - MINOR - REPAIR
Components	DASH	●	
Components	FRAME	●	
Components	PAINT/ BODY	●	SCUFFS & KNICKS ? TOUCH-UP COUNTERWEIGHT & BODY
Components	OVERHEAD GUARD	●	
Components	PALLET GRABER	●	MINOR BENT REPAIR
Components	PLATFORM	●	
Components	MIRRORS	●	
Components	MISCELLANEOUS	●	
Mechanical	DRIVE GEAR(S)	●	
Mechanical	TILT CYLINDER(S)	●	
Mechanical	LIFT CYLINDER(S)	●	
Mechanical	MAST	●	
Mechanical	OPERATOR LIGHTS	●	
Mechanical	PUMP / MOTOR	●	
Mechanical	BRAKE SYSTEM	●	
Mechanical	MDU	●	
Mechanical	CONTROLS	●	LIFT FUNCTION INOPERABLE REPAIR
Mechanical	ELECTRIC SYSTEM	●	



RIGHT SIDE



RIGHT REAR



LEFT REAR



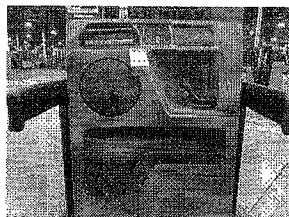
LEFT SIDE



FRONT



**OPERATOR
COMPARTMENT**



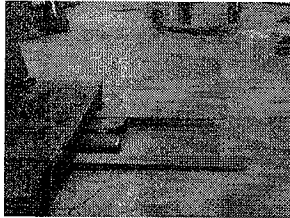
**ENGINE/BATTERY
COMPARTMENT**



DATA TAG



FORKS/ATT



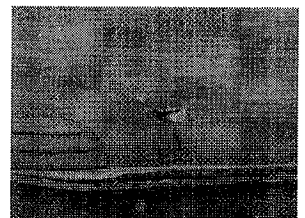
DISPLAY



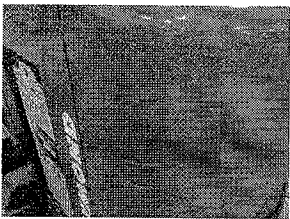
LOAD WHEELS



COVERS



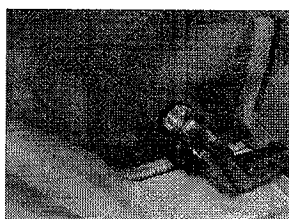
COVERS



PAINT/ BODY



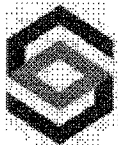
CONTROLS



Re: PO for LiftOne WO-02339343

From James Burford <james.burford@ship8.com>
Date Mon 9/22/2025 1:27 PM
To Christine Jenkins <christine.jenkins@ship8.com>

Yes



SHIP8 INC.

James Burford
Regional Facilities Director
311 International Trade Pkwy
Port Wentworth, GA 31407

C:912.507.7881

From: Christine Jenkins <christine.jenkins@ship8.com>
Sent: Monday, September 22, 2025 1:27 PM
To: James Burford <james.burford@ship8.com>
Subject: Re: PO for LiftOne WO-02339343

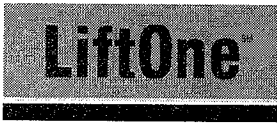
Has PO 25090980 been completed?



SHIP8 INC.

Christine Jenkins
Purchasing Coordinator
550 Northport Parkway
Port Wentworth, GA 31407

O:912-373-7778 X 3825



PO BOX 1095
Charlotte, NC 28201

Visit our website to view news and promotions at www.LiftOne.net

STORE LOCATION:
LiftOne - Garden City, GA
TEL# (912) 964-4830
FEDERAL ID 45-4550422

REMIT PAYMENT:
LiftOne LLC
PO Box 602727
Charlotte NC 28260-2727

BILL-TO-ADDRESS:92913

SHIP8 INC
45875 NORTHPORT LOOP EAST
FREMONT CA 94538

SERVICE INVOICE	
INVOICE NO:	98299251
INVOICE DATE:	09-19-2025
CUSTOMER PO:	25090980
CUSTOMER UNIT NO.	
MODEL NO.	560-OPC030
SERIAL NO.	560-12-B13153
SERVICE ORDER NO.	WO-02339343
PAYER	92913

SHIP-TO-ADDRESS:2075806
SHIP8 @ E&E COMPANY LTD
550 NORTHPORT PKWY
PORT WENTWORTH GA 31407-9286

SERVICE ORDER: WO-02339343DAM: Customer Damage CO. Owned
EQUIP#: 394334 MODEL: 560-OPC030 SERIAL#: 560-12-B13153
HOUR METER: TECH ID: 602730 TECH NAME: Corey Riggsby
PARTS USED FOR REPAIR

Material	Description	Qty	Price	Amount
SERVICE-PART	114-009-622/042 PAIR	1	2,725.38	2,725.38
Total parts				2,725.38
Items total				2,725.38
Invoice Amount				2,725.38

Thank you for choosing LiftOne. We appreciate the opportunity to handle your material handling needs.



To receive your invoices & statements electronically, view your account and to pay your invoices online please visit www.LiftOne.net

TERMS OF PAYMENT: DUE UPON RECEIPT

REMIT PAYMENT TO:

LIFTONE
PO BOX 602727
CHARLOTTE NC 28260-2727

TOTAL DUE 2,725.38

* NO CASH DISCOUNTS *

All past due amounts will be assessed a finance charge at the highest lawful rate. In case suit is necessary for collection, buyer agrees to pay all cost, including reasonable attorney's fees. Prices subject to change without notice. Do not return parts for credit without prior approval of Parts Manager. A 15% handling/restocking charge will be applied on returned merchandise. Applicable sales, use or excise taxes are payable by purchaser in addition to the prices stated herein. Invoice Dispute claims must be made within 15 days.

All sales are subject to standard terms & conditions posted on our company's website at www.LiftOne.net

Thank-You for your business!!