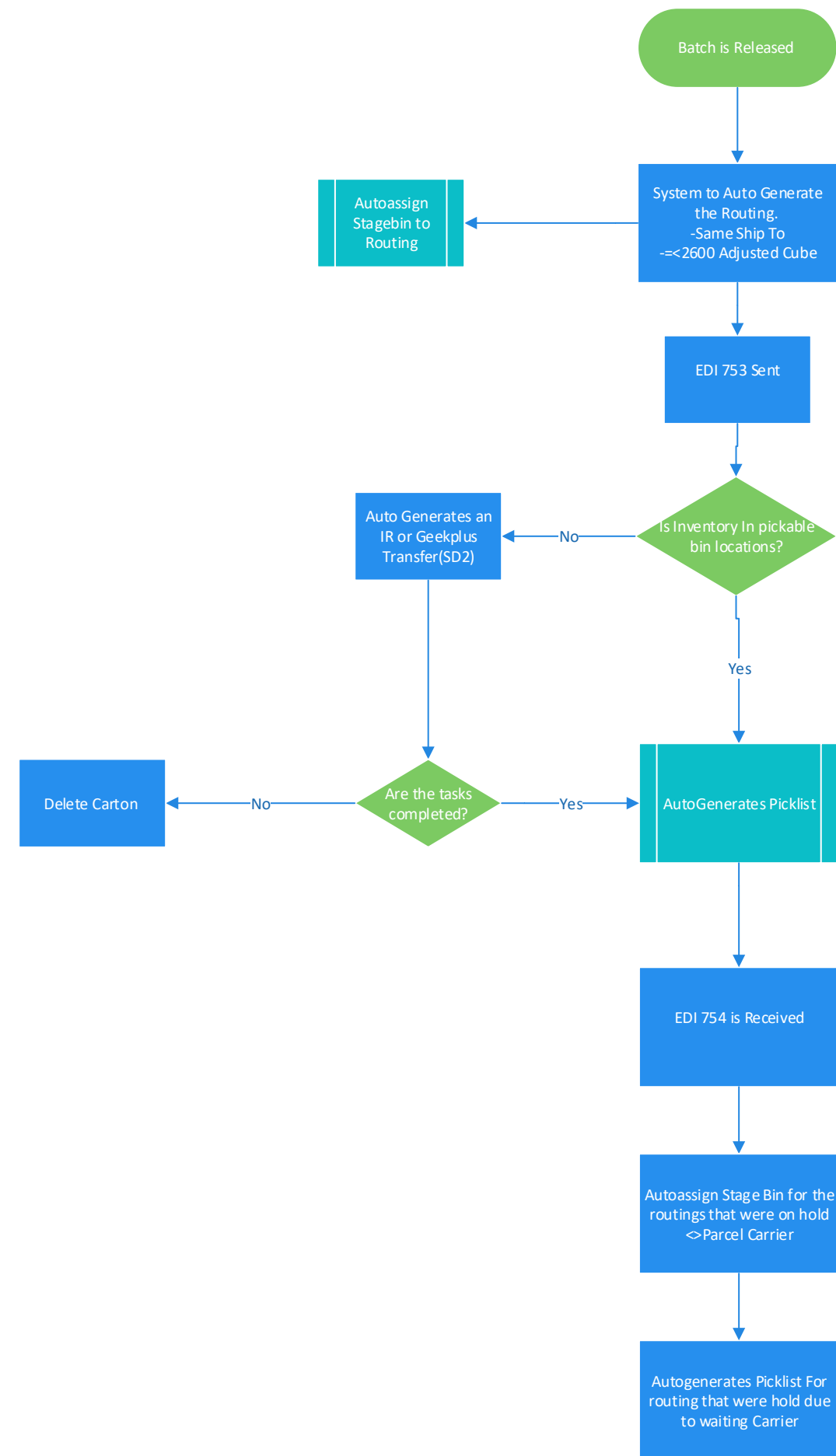
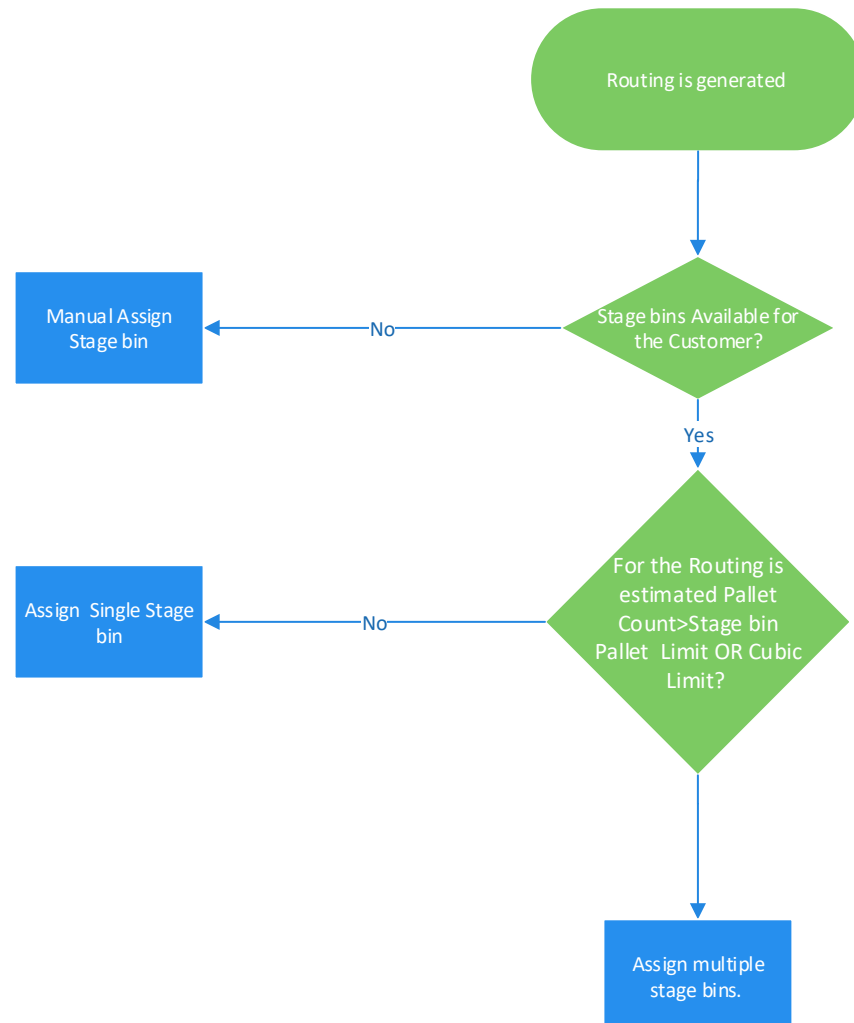


DISTRIBUTION PROCESS



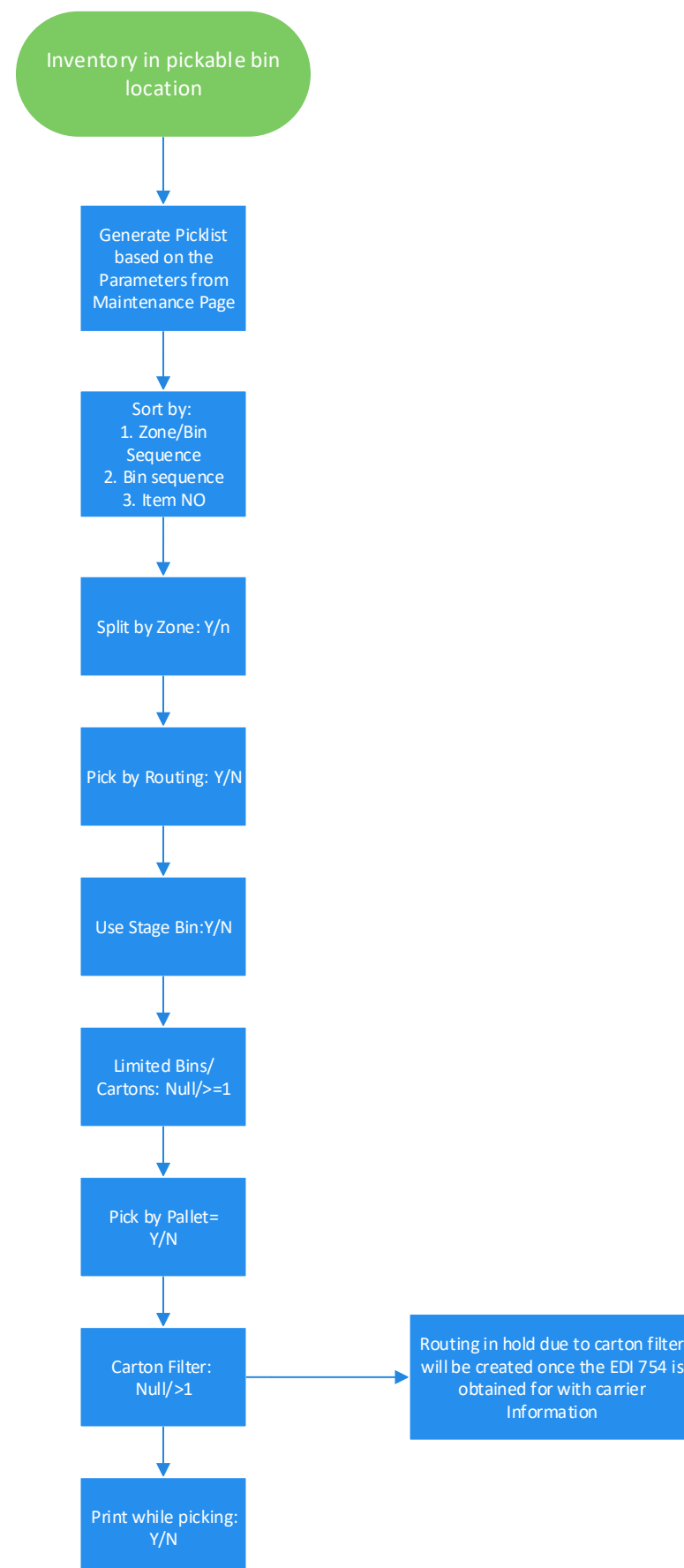
Maintenance Page similar to Drop Ship Autobatch Page where the user can select the customer that they would like to apply the Automation Logic.

Autoassign Stage Bin-Subprocess



1. Do not allow user to override Stage Bin. User only able to scan to the stage bin assigned OR SAFE BIN LOCATION . Safe bin location will be utilized only when there is overflow. This will be a physical location in front of the desk that user can scan. User will only be able to scan Stage bin OR Safe Bin.
 2. Stage bin to be set up for certain customers. Amazon routing cannot be assigned to stage bin for Walmart customer. Only supervisors to be able to modify the binding of the stage bins.
 3. Stage bin to have Pallet Limit Or Cubic Limit . We want this value to be modifiable by supervisors ONLY.
 4. Limit of Pallet in the stage will be by cube. The user can enter the Length,Width and Height required for the customer and system will calculate the Cubic Feet and then user will enter the pallet limit for that Stage bin and system then will multiply the pallet limit * cubic feet to obtain total cubic feet for that stage bin.
 5. Supervisor/Clerk will be allowed to add another stage to the routing if necessary as long as there is physically location. Exception should be very minimum. For Example: Amazon Pallet requirement is up to 98 inches . Therefore for the Customer Amazon user will enter 48*40*98 and system will calculate the cubic feet of that value which in this case is 108.89 CF. Once user select the stage bin and add a stage for Amazon as the customer then they will enter the Pallet limit , for example 15 pallets. Then system will multiply 108.89 x 15 pallets and that will be the amount of total cube that can be assigned to that stage bin.
 6. Email Alert to Production team Group when for that specific customer they are utilizing 95% of the stage bins. We want the team to be proactive and add stage bins for that customer if they are running out.
 7. Stage bin Maintenance Page: Visibility of what is in the lanes, Map of the stage bin similar to the yard view.
- Maintenance Page will be helpful for us in case any changes needs to be performed.**

Autoassign of Picklist-Subprocess



Automated Picklist Generation will be only allowed for customers that allow short ship. For example, Amazon does allow you to short ship but Walmart does not allow to Short Ship therefore the Whole PO needs to be available to pick in order for the system to generate the picklist.

Only generate automated picklist for the POs that All the inventory is available for customer set up for Short Ship. We need to set up each customer with the Short Ship Attribute.