

EEC Publish Version 250327

Accounting Part

1. Add Replacement Order No. on Charge Back Import page.

Customer Service Part

1. Add hyperlink to sales order list page/Tracking No. column, click to download shipping label file.

EDI Part

1. Ready customer test for Williams Sonoma.

Distribution Part

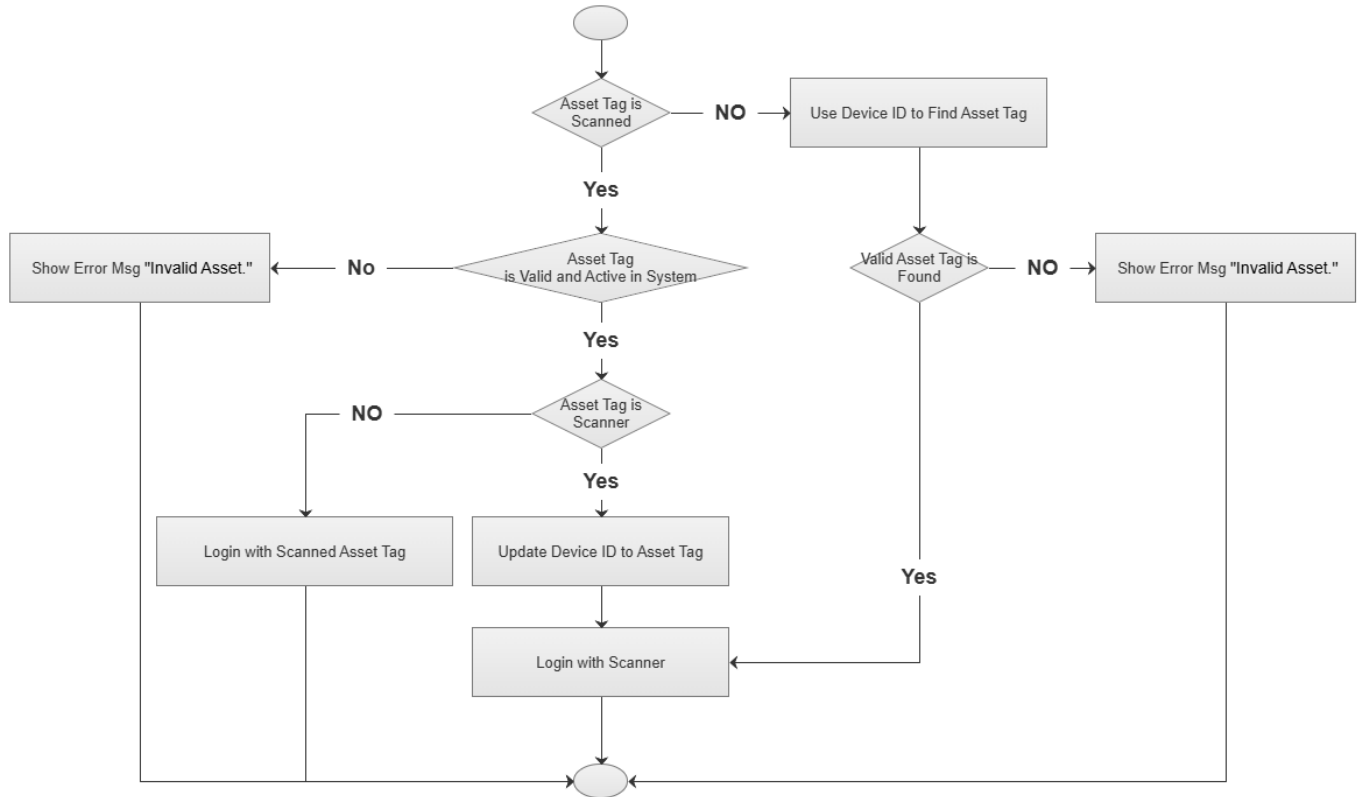
1. Add Division and Pattern to Wholesale Order Status Report.
2. Allow distribution VP to Approve and Reverse all rework request, except for FBA rework.
 - Add Container No. and PO No. on request detail page.
3. Add button Send 753 on Batch Mgt. page, support to manually send 753 for selected batch.
 - Add query condition 753 Sent on Batch Mgt. page.
4. Support 860 for JCP to change Ship To only.

Warehouse Part

1. Add column Schedule Ship Date on Trailer Manifest page.
2. Create Packing List for 3PL Customer Med Supply.
3. Change column name and related tips on Warehouse Storage Capacity Report.
4. Send email to Production Team when the LIC Request is Reversed or Approved.
Allow to maintain Production Team Group Email on Location page.
5. Wireless App Truck Load: Always allow to load by shipping label for small package shipment.
6. Wireless App Print UPC: Allow to print UPC by entering Item No. directly.

7. Revise Android Application to login without scan current scanner's Asset Tag.

- User still needs to scan the Scanner's Asset tag on the first time. After the first scan, you can login without scan.
- Please upgrade the Android application to the latest version.



Web Portal Part

1. Add field Business Line on order detail page.
 - Add query condition Business Line on Order list page.
 - Add column Load Date on order list page.