





Inhouse Drop Test Report

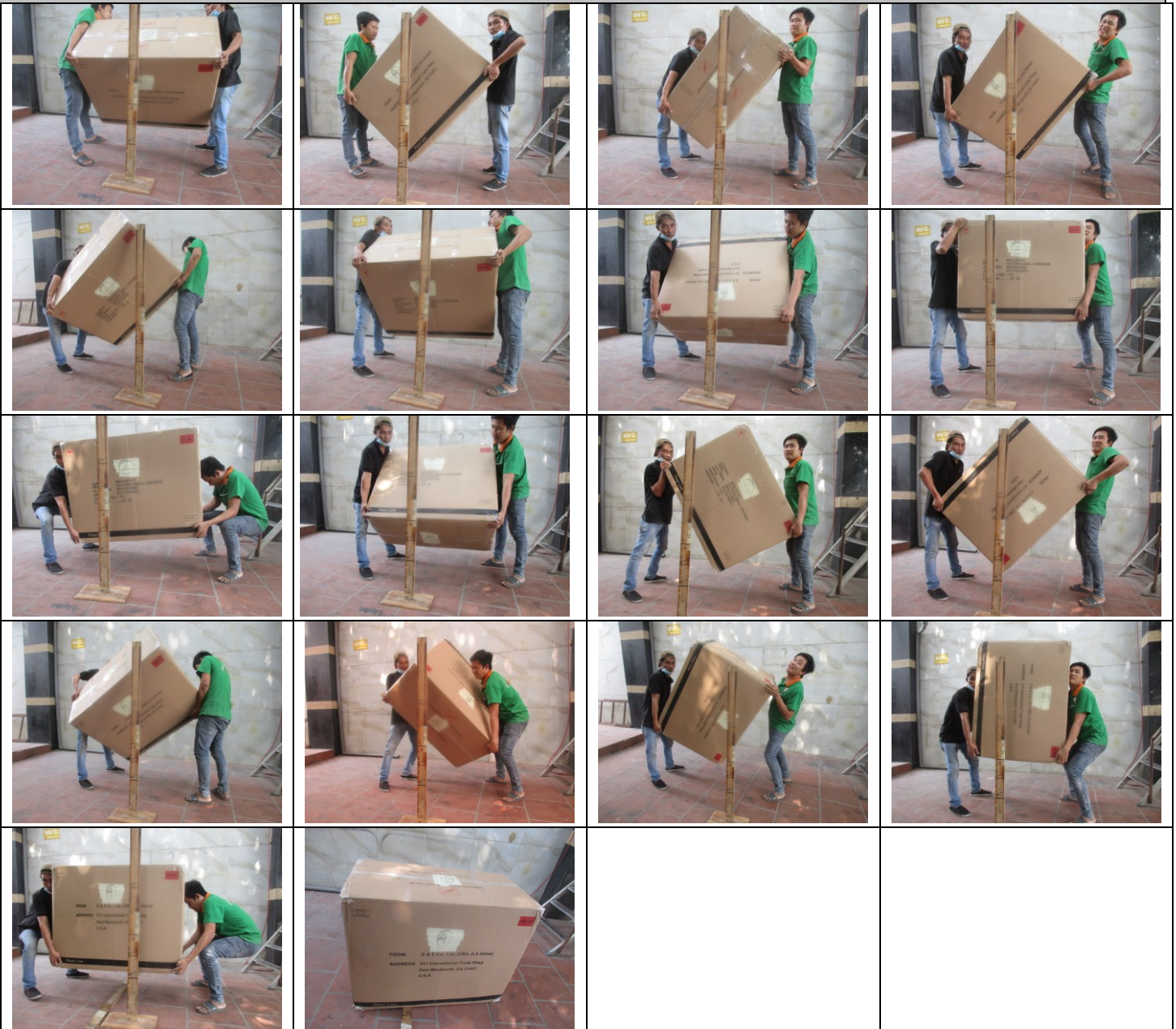
Drop test standard	ISTA 3A	Drop Height (short/tall)	12" / 24"	Result of Drop Test (Passed/Failed/Pending)	Passed
Customer	MPS	JLA Attendant	Nhan	Test Date	March 17, 2022
Vendor	PHU KIM	Vendor Attendant	Mr.Duong	Report Author	Nhan

Item Code/ Description	MPS137-0004/ Victoria Small Dresser		Style of carton	Standard:	V
				Flat:	
				Elongest:	
Product size(in.)	Package Size(in.) (Add short height if it is L carton)	Length + Girth (in.) Should be <= 158" L+2*(W+H):	G.W. (KG/LBS)	N.W.(KG/LBS)	Carton Bursting strength (Lbs)
40"Wx19"Dx36.25"H	43.5" x 22.75" x 35"	160"	45/99	55/121	275Lbs

Test Specimen Picture	Test Result Summary
	<p>The package PASSED the drop test as per ISTA-3A test procedures with no defects or constructional failure noted on the sample dropped.</p>
	<p>An Improvement or emphasis on mass products</p> <ul style="list-style-type: none"> • <i>Add carton corner @ corners.</i> • <i>Add pallet frame more thickness.</i>

Failure details (pictures with specification)	
Suggested Corrective Actions	

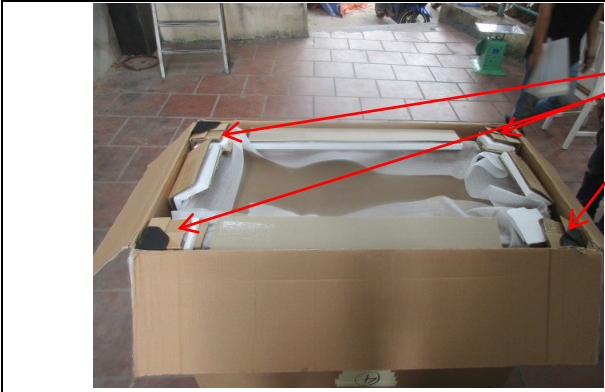
A. Pictures of drop step: each step has one picture



B. Packing Method: write down dimension/quantity of each packing material



Pallet Frame more thickness = 1 Pc



PP Corners + Carton 5ply+ HDF corners + Foam corners 20kg/m3 + Carton 5ply: 100*100*100*20=4pcs



L Carton 5ply + Foam 20kg/m3 + Carton 5ply: 700*100*100*20=2pcs

L Carton 5ply + Foam 20kg/m3 + Carton 5ply: 200*100*100*20=2pcs



Pallet Frame more thickness = 1 Pc

Foam 16kg/m3: 500*100*30 =2 pcs (Back view)

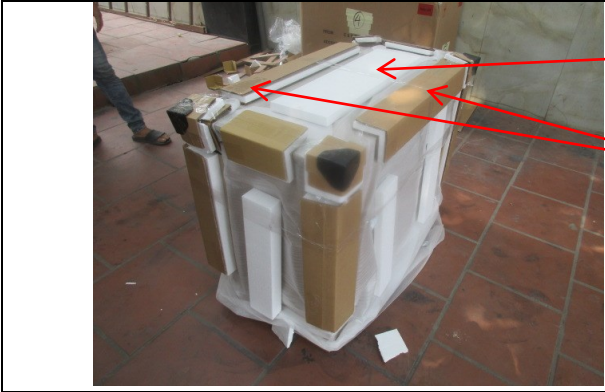


PP Corners + Carton 5ply+ HDF corners + Foam corners 20kg/m3 + Carton 5ply: 100*100*100*20=4pcs

L Carton 5ply+Foam 20kg/m3+Carton 5ply: 500*100*100*40*40 = 2pcs

Foam 16kg/m3: 500*100*50 =4 pcs

Front View



Foam 16kg/m3 : 700*200*30 =1pc

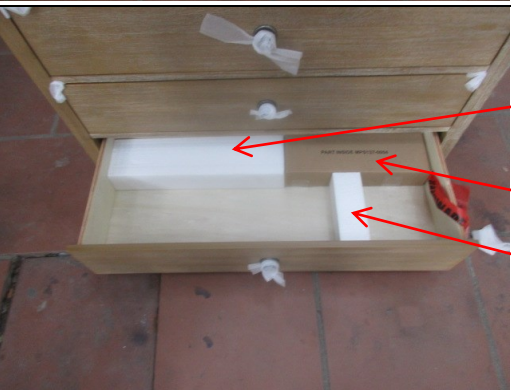
L Carton 5ply+Foam 20kg/m3+Carton 5ply:
700*100*100*20=2pcs



L Carton 5ply+Foam 20kg/m3+Carton 5ply:
200*100*100*20=2pcs

L Carton 5ply+Foam 20kg/m3+Carton 5ply:
500*100*100*40*20 = 2pcs

Back View



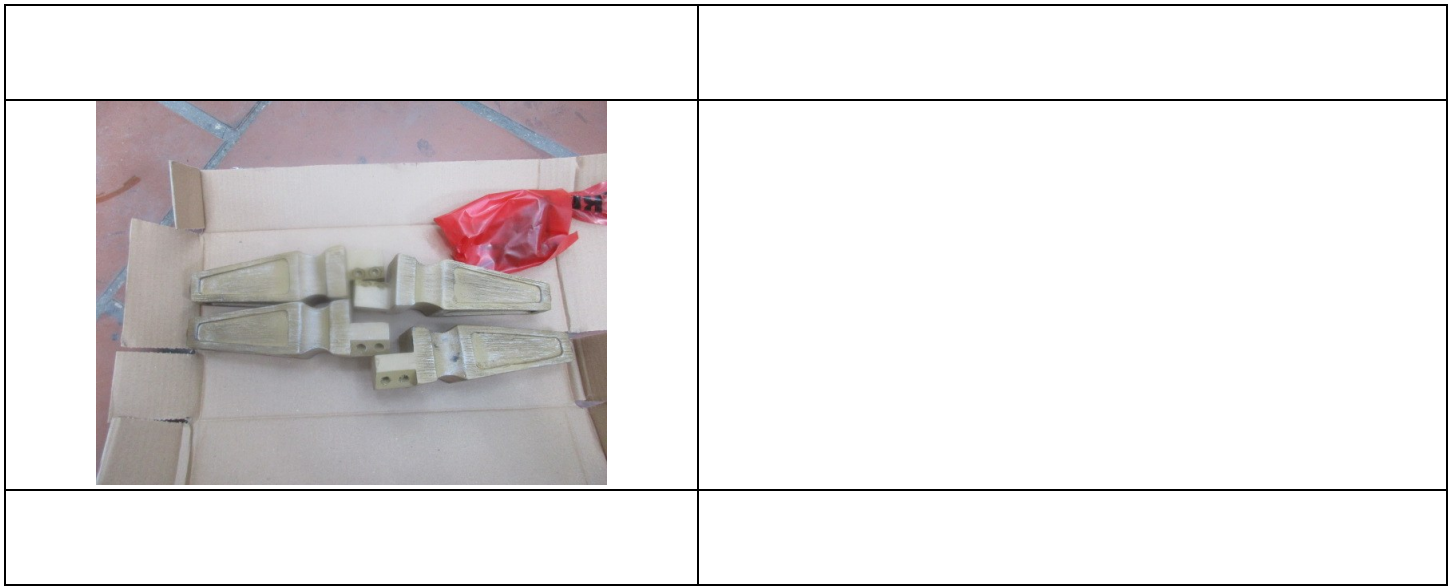
Foam 16kg/m3: 470*120*70 =1 pc

Leg Box Carton 3ply = 1pc

Foam 16kg/m3: 215*70*70 =1 pc



Carton 5 ply



C. Checking Drop Testing Carton and Any Product Defects or Damages:

Pictures of Critical Corner, Important construction joints and Some Views (such as back's 2/3 angel products and bottom view) After Drop



Drop Test Sequence							
Drop No.	Drop Height (inch)		Test Specimen	Drop No.	Drop Height (inch)		Test Specimen
	<input type="checkbox"/> <32kg	<input checked="" type="checkbox"/> 32-70kg			<input type="checkbox"/> <32kg	<input checked="" type="checkbox"/> 32-70kg	
			Standard, Flat,				Standard, Flat,

(1 st seq.)	(70lbs)	(70-150lbs)	Elongated	(2 nd seq.)	(70lbs)	(70-150lbs)	Elongated
1	18	12	Edge 3-4	10	18	12	Edge 3-4
2	18	12	Edge 3-6	11	18	12	Edge 3-6
3	18	12	Edge 4-6	12	18	12	Edge 1-5
4	18	12	Corner 3-4-6	13	18	12	Corner 3-4-6
5	18	12	Corner 2-3-5	14	18	12	Corner 1-2-6
6	18	12	Edge 2-3	15	18	12	Corner 1-4-5
7	18	12	Edge 1-2	16	36	24	Most critical or damage-prone flat orientation (Face 5)
8	36	24	Face 3	17	18	12	Standard: Face 3 on hazard Flat or Elongated: Face 2 on hazard
9	18	12	Face 3				
Additional drop/impact tests							
<input checked="" type="checkbox"/> Flat				<input type="checkbox"/> Elongated			
Rotation Edge Drop				Rotation Edge Drop			
Height (in.)		Specific edge		Height (in.)		Specific edge	
Support height: 4 in Drop height: 8 in		1. One of the longest face 3 edges		Support height: 4 in Drop height: 8 in		1. One of the longest face 3 edges	
		2. Next longest edge radiating 90° from the edge just tested				2. Next longest edge radiating 90° from the edge just tested	
		3. The opposite edge tested in Sequence 2				3. The opposite edge tested in Sequence 2	
Full Rotational Flat Drop				Full Rotational Flat Drop			
Rest on a rigid surface		Impact face		Rest on a rigid surface		Impact face	
Smallest face		Face 3		Smallest face		Face 3	
Next largest face		Face 3		Next largest face		Face 3	
Concentrated Impact				Bridge Impact			
Drop height (in)		16 in		Drop height (in)		16 in	