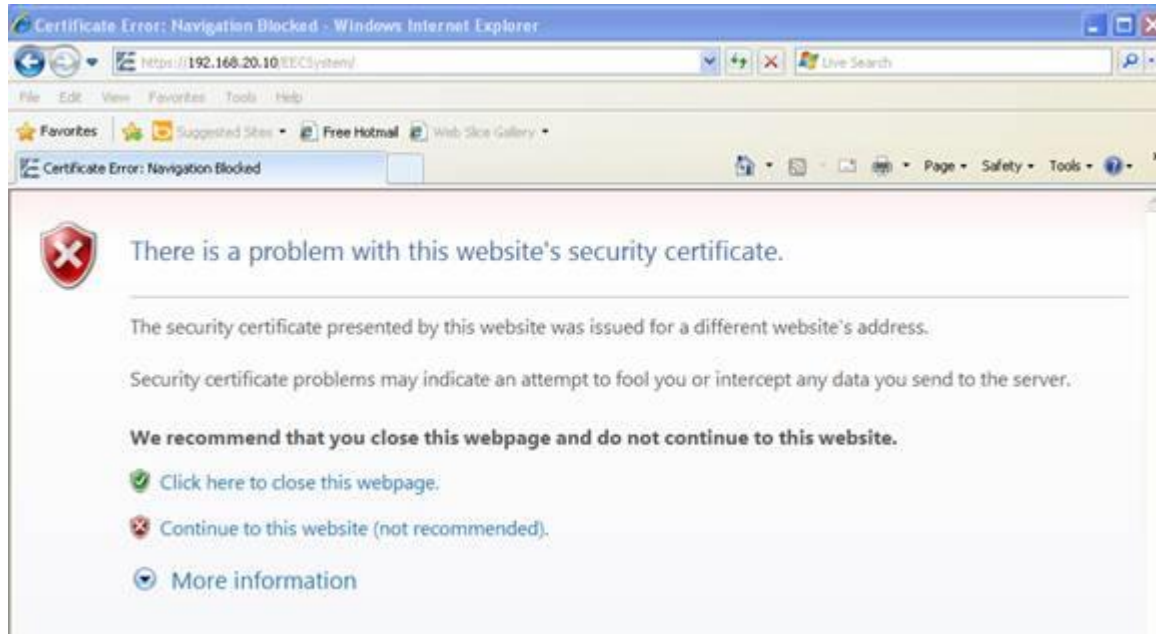


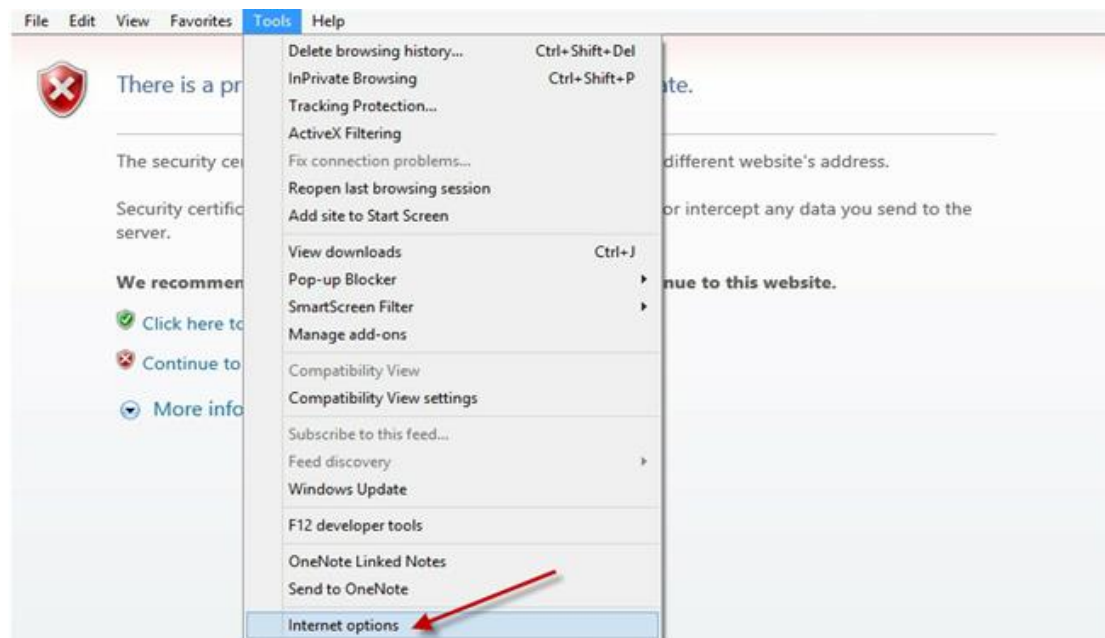
IE: How to disable certificate mismatch warning.

IE Certificate Error:

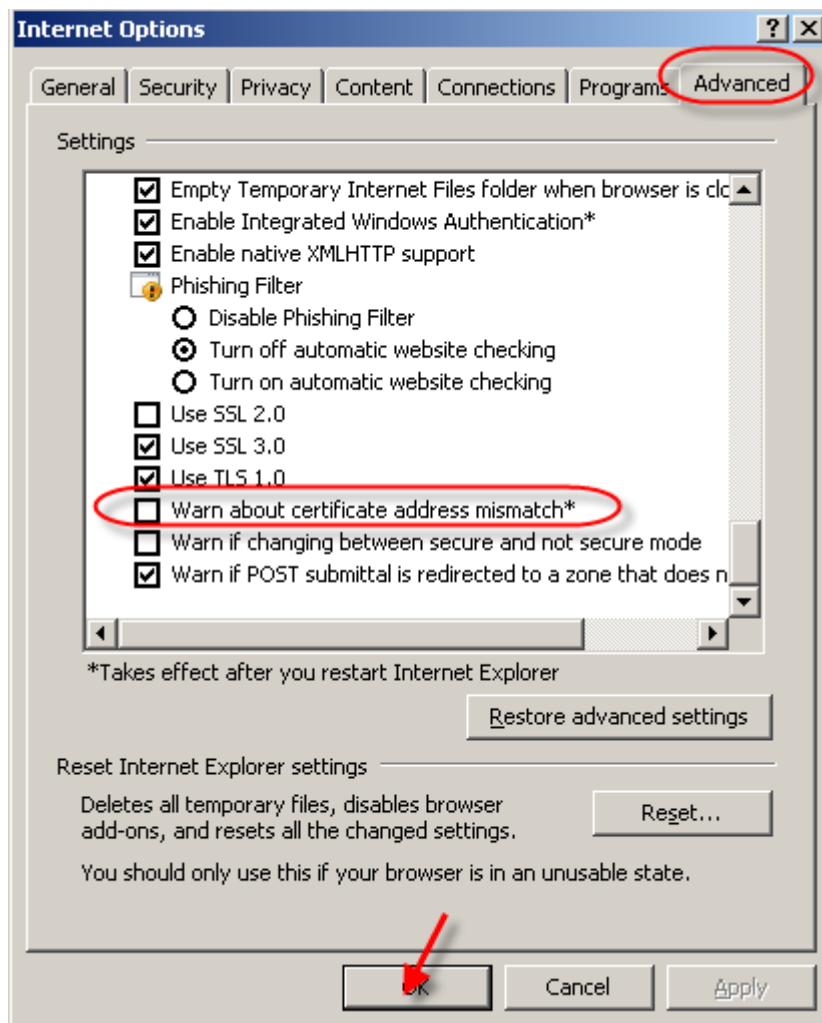


Solution: To disable certificate mismatch warnings

1. Open Internet Explorer. Click **Tools**, and then click **Internet Options**.



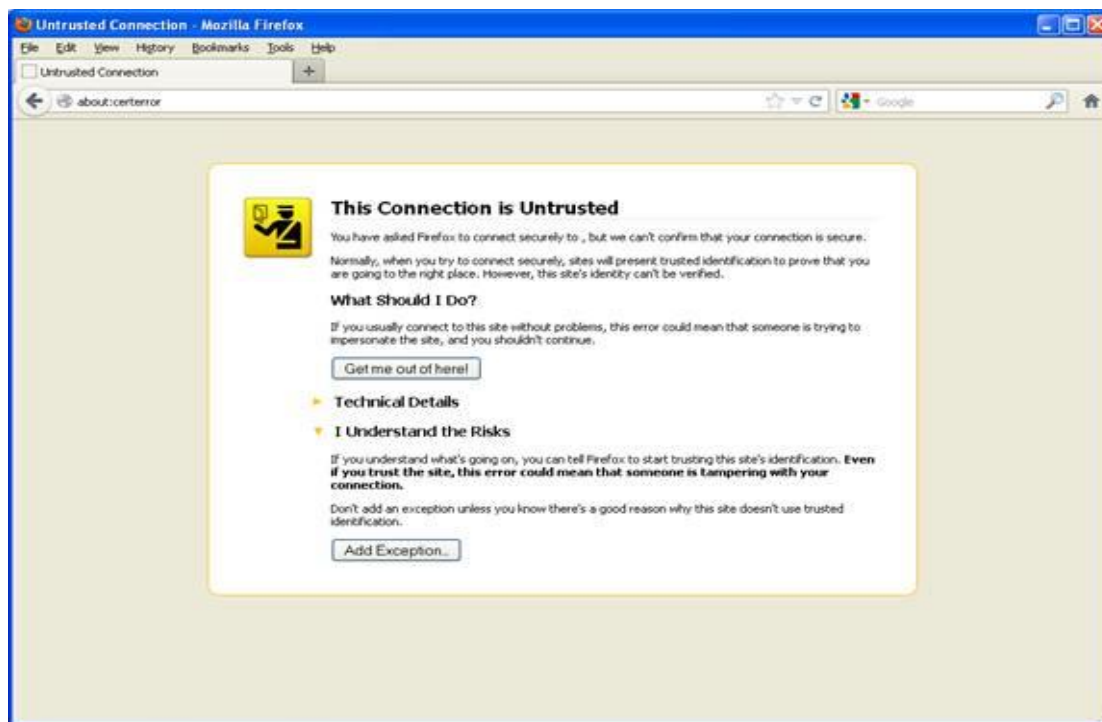
2. Click **Advance**, scroll down until you see **Warn about certificate address mismatch***, uncheck it and Click **Ok**.



3. Close all IE window and Restart it and retype EEC address

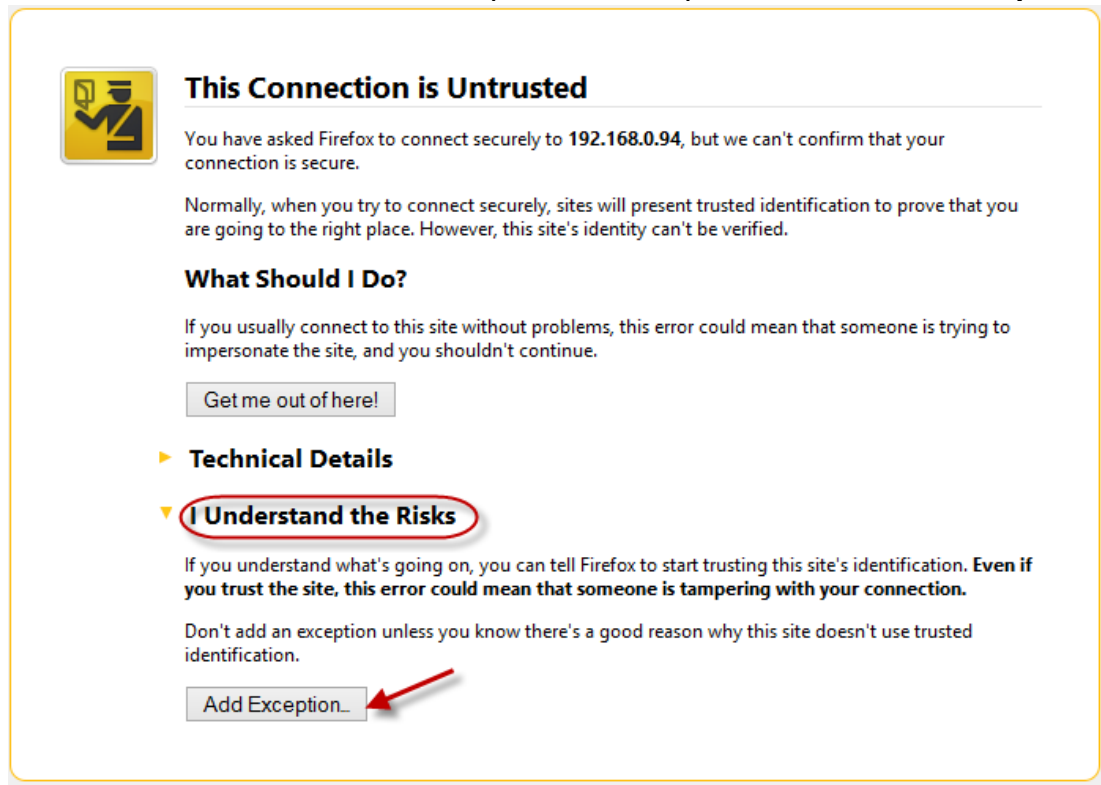
Firefox: How to fix the untrusted connection

Firefox Untrusted Connection Error:



Solution: To fix the untrusted connection

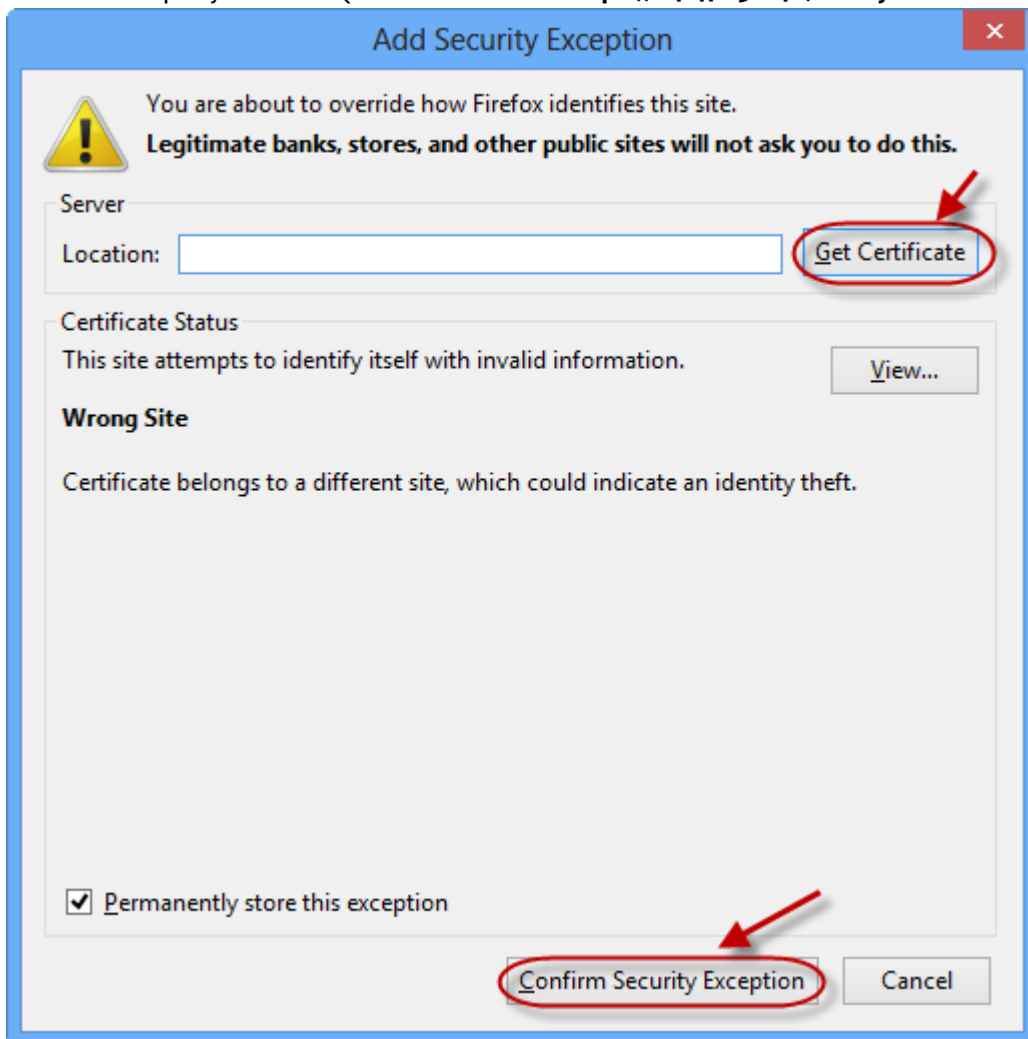
1. In a new tab, copy and paste the following in the URL: **about:certerror** and press **Enter** key (Note: If you see **I understand the Risk**, you may skip this step).
2. Click **I understand the Risk** to expand its description and Click **Add Exception**.



3. If **Location** does not automatically populate EEC address, enter below EEC address:

Within company network (Internal Address): <http://192.168.0.94/EECSysTemUS>

Outside company network (External address <https://64.47.138.40/EECSysTemUS>



4. Click **Get Certificate** and then click on **Confirm Security Exception**.